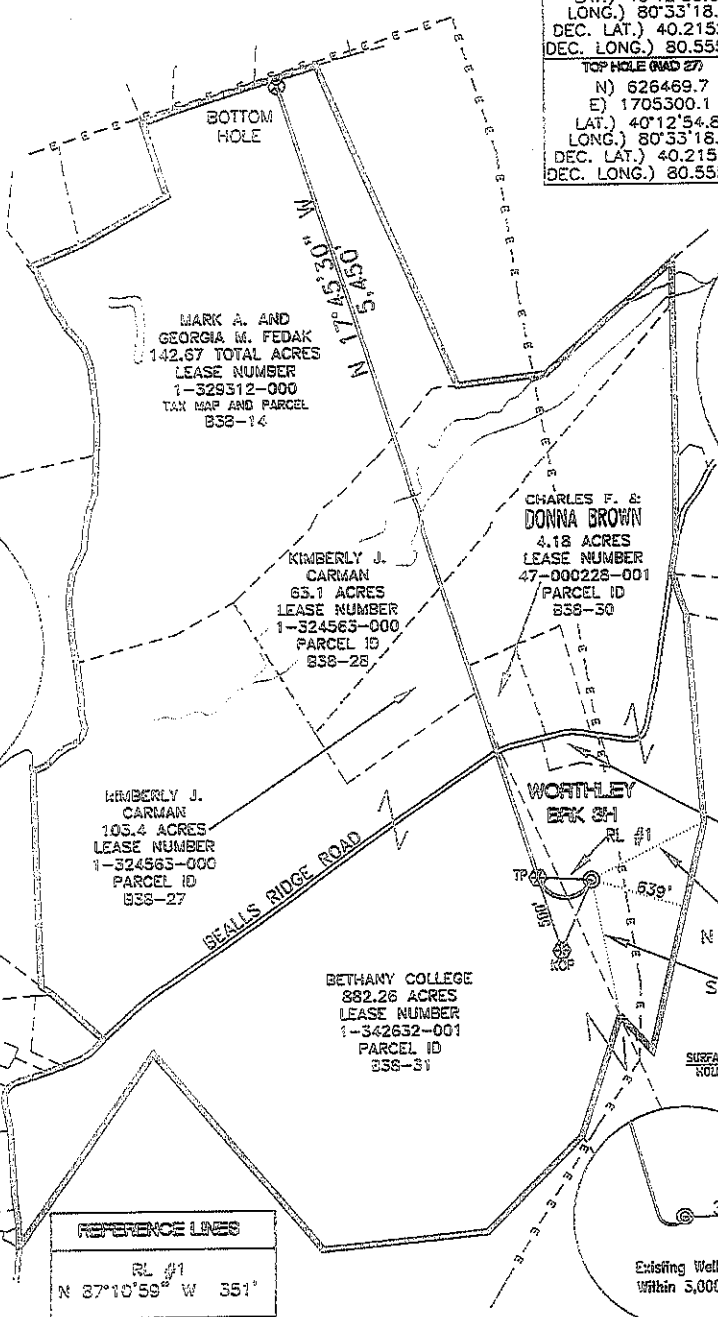
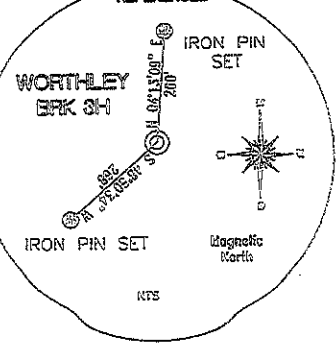
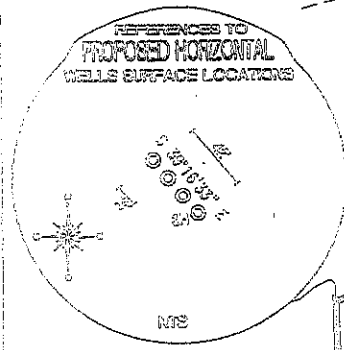


RCP (NAD 83)	
N)	626047.9
E)	1673667.2
LAT.) 40°12'50.5"	
LONG.) 80°33'20.5"	
DEC. LAT.) 40.214014	
DEC. LONG.) 80.555895	
RCP (NAD 27)	
N)	626010.7
E)	1705101.6
LAT.) 40°12'50.2"	
LONG.) 80°33'21.3"	
DEC. LAT.) 40.213443	
DEC. LONG.) 80.555902	
TP (NAD 83)	
N)	626524.1
E)	1673514.7
LAT.) 40°12'55.1"	
LONG.) 80°33'22.5"	
DEC. LAT.) 40.215316	
DEC. LONG.) 80.556261	
TP (NAD 27)	
N)	626486.9
E)	1704949.1
LAT.) 40°12'54.9"	
LONG.) 80°33'23.3"	
DEC. LAT.) 40.215245	
DEC. LONG.) 80.556468	

TOP HOLE (NAD 83)		BOTTOM HOLE (NAD 83)	
N)	626506.8	N)	631714.2
E)	1673865.7	E)	1671852.5
LAT.) 40°12'55.0"		LAT.) 40°13'46.2"	
LONG.) 80°33'18.0"		LONG.) 80°33'44.8"	
DEC. LAT.) 40.215280		DEC. LAT.) 40.229509	
DEC. LONG.) 80.555004		DEC. LONG.) 80.562433	
TOP HOLE (NAD 27)		BOTTOM HOLE (NAD 27)	
N)	626469.7	N)	631677.1
E)	1705300.1	E)	1703286.9
LAT.) 40°12'54.8"		LAT.) 40°13'46.0"	
LONG.) 80°33'18.8"		LONG.) 80°33'45.5"	
DEC. LAT.) 40.215209		DEC. LAT.) 40.229438	
DEC. LONG.) 80.555210		DEC. LONG.) 80.562638	

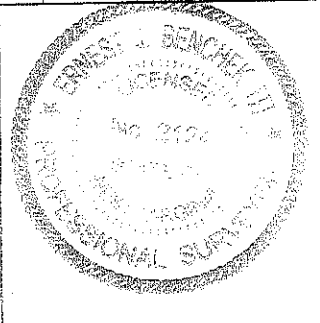


**REFERENCE NOTES**  
Boundaries as shown taken from deeds, tax maps and field locations. A full boundary survey is not expressed nor implied. All bearings are based on true north. Ownership taken from public records Brooke County, West Virginia NOVEMBER 2011  
State Plane Coordinates & NAD 83 Lat/Long by differential submeter mapping grade GPS  
Drafted by: E.A.M.

SURFACE HOLE DEC. LAT. 40.215209  
SURVEYED LAT. 40° 12' 54.8"

FILE #: CHE 098  
DRAWING #: 1903  
SCALE: 1" = 1200'  
MINIMUM DEGREE OF ACCURACY: 1/200  
PROVEN SOURCE OF ELEVATION: SUBMETER MAPPING GRADE GPS

I, THE UNDERSIGNED, HEREBY CERTIFY THAT THIS PLAT IS CORRECT TO THE BEST OF MY KNOWLEDGE AND BELIEF AND SHOWS ALL THE INFORMATION REQUIRED BY LAW AND THE REGULATIONS ISSUED AND PRESCRIBED BY THE DEPARTMENT OF ENVIRONMENTAL PROTECTION.  
Signed: \_\_\_\_\_  
L.L.S. #2124 : Ernest J. Benchek III



(+) DENOTES LOCATION OF WELL ON UNITED STATES TOPOGRAPHIC MAPS  
WVDEP  
OFFICE OF OIL & GAS  
601 57TH STREET  
CHARLESTON, WV 25304

DATE: FEBRUARY 7, 2012  
OPERATOR'S WELL #: WORTHLEY BRK 3H  
API WELL #: 47 09 00135H6A  
STATE COUNTY PERMIT

Well Type:  Oil  Waste Disposal  Production  Deep  
 Gas  Liquid injection  Storage  Shallow

WATERSHED: UPPER OHIO SOUTH ELEVATION: 1,160'  
COUNTY/DISTRICT: BROOKE/BUFFALO QUADRANGLE: BETHANY  
SURFACE OWNER: KIMBERLY CARMAN WORTHLEY ACREAGE: 103.4 +/-  
OIL & GAS ROYALTY OWNER: KIMBERLY CARMAN WORTHLEY ACREAGE: 1,195.61 +/-  
LEASE NUMBERS: \_\_\_\_\_

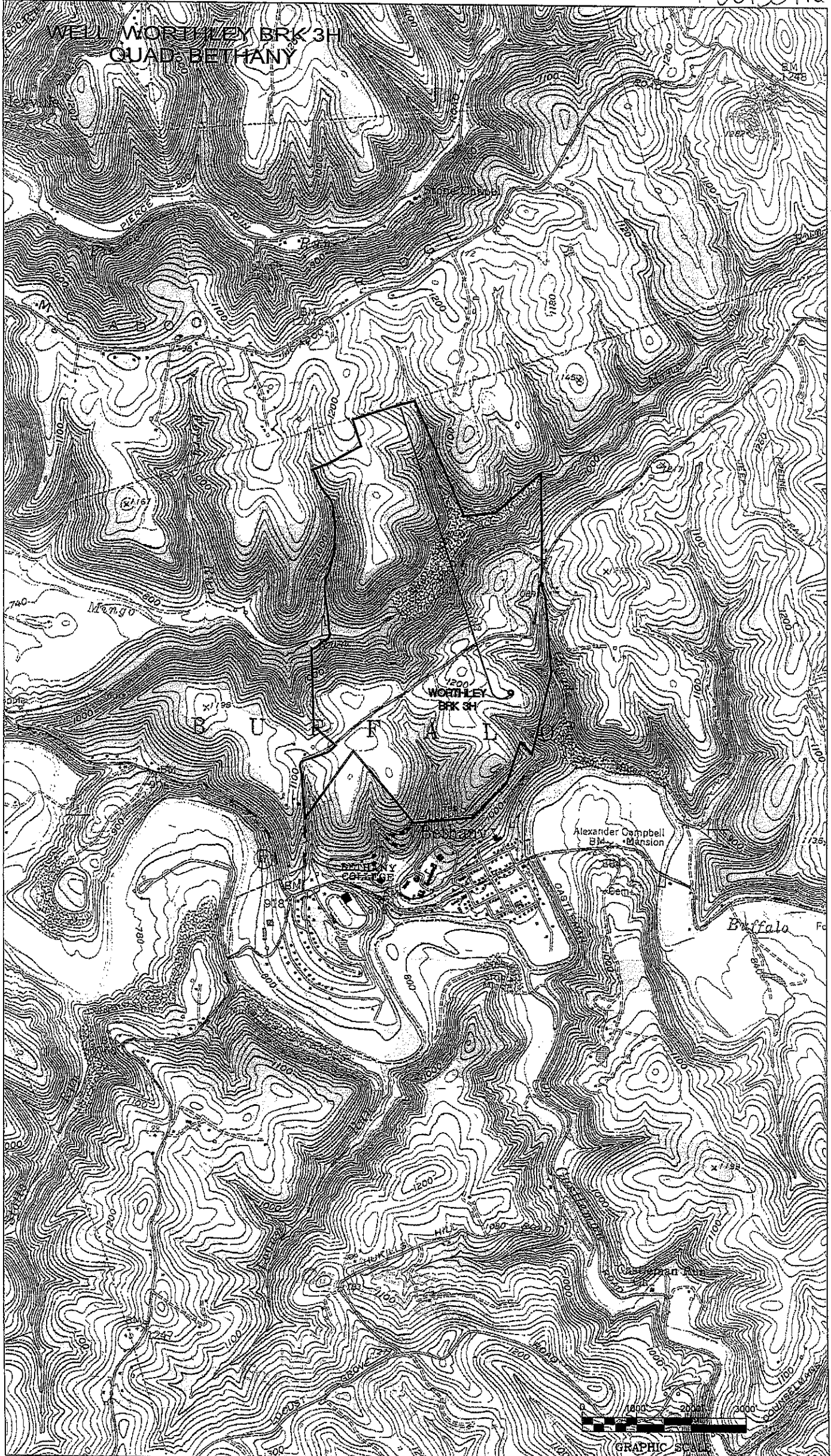
DRILL  CONVERT  DRILL DEEPER  REDRILL  FRACTURE OR STIMULATE   
PLUG OFF FORMATION  PERFORATE NEW FORMATION  PLUG & ABANDON   
CLEAN OUT & REPLUG  OTHER CHANGE  (SPECIFY): \_\_\_\_\_

TARGET FORMATION: MARCELLUS ESTIMATED DEPTH: TVD: 6010 TMD: 11388  
WELL OPERATOR: CHESAPEAKE APPALACHIA, LLC. DESIGNATED AGENT: ERIC GILLESPIE  
ADDRESS: PO BOX 18496 ADDRESS: PO BOX 6070  
CITY: OKLAHOMA CITY STATE: OK ZIP CODE: 73154-0496 CITY: CHARLESTON STATE: WV ZIP CODE: 25362



4-00135 HU 71

WELL WORTHLEY BRK 3H  
QUAD BETHANY



4-00135