

REFERENCE LINES
 RL #1
 S 64°00'00" W 824'

JOHN W. AND JOSEPH T. HUPP AND LINDA H. DOUBLE
 184 ACRES
 LEASE NUMBER 1-264309-001
 PARCEL ID 84S-16

LOCUST GROVE ROAD

S 76°01'29" E
 942'

TOP HOLE (NAD 83)
 N) 612408.2
 E) 1669846.9
 LAT.) 40°10'35.2"
 LONG.) 80°34'07.7"
 DEC. LAT.) 40.176452
 DEC. LONG.) 80.568792

TOP HOLE (NAD 27)
 N) 612371.1
 E) 1701281.4
 LAT.) 40°10'34.9"
 LONG.) 80°34'08.4"
 DEC. LAT.) 40.176380
 DEC. LONG.) 80.568997

KOP (NAD 83)
 N) 612278.3
 E) 1668793.2
 LAT.) 40°10'33.8"
 LONG.) 80°34'21.2"
 DEC. LAT.) 40.176061
 DEC. LONG.) 80.572558

KOP (NAD 27)
 N) 612241.2
 E) 1700227.7
 LAT.) 40°10'33.6"
 LONG.) 80°34'21.9"
 DEC. LAT.) 40.175989
 DEC. LONG.) 80.572763

TP (NAD 83)
 N) 611810.4
 E) 1668969.4
 LAT.) 40°10'29.2"
 LONG.) 80°34'18.9"
 DEC. LAT.) 40.174782
 DEC. LONG.) 80.571907

TP (NAD 27)
 N) 611773.3
 E) 1700403.9
 LAT.) 40°10'28.9"
 LONG.) 80°34'19.6"
 DEC. LAT.) 40.174710
 DEC. LONG.) 80.572112

TH (UTM-NAD 83)
 N) 4447431.1
 E) 536712.9

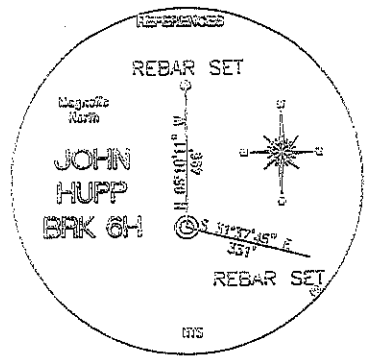
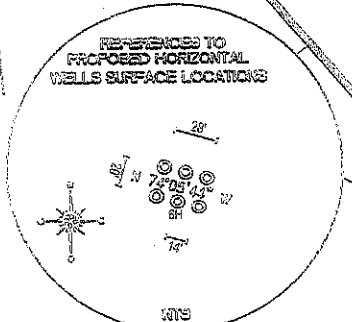
BOTTOM HOLE (UTM-NAD 83)
 N) 4445958.0
 E) 536958.0

JOHN HUPP BRK 6H
 BROOKE COUNTY OHIO COUNTY

LARRY G. BALL
 130.457 ACRES
 LEASE NUMBER 1-324702-000
 PARCEL ID L1-38

SCOTT AND MARK SONDA
 182.97 ACRES
 LEASE NUMBER 1-324672-000
 PARCEL ID L2-2

BLAIRD KLOSS
 112.403 ACRES
 LEASE NUMBER 1-324180-000
 PARCEL ID L2-4



BOTTOM HOLE (NAD 83)
 N) 607560.7
 E) 1670570.5
 LAT.) 40°09'47.4"
 LONG.) 80°33'57.6"
 DEC. LAT.) 40.163170
 DEC. LONG.) 80.565997

BOTTOM HOLE (NAD 27)
 N) 607523.6
 E) 1702004.6
 LAT.) 40°09'47.2"
 LONG.) 80°33'58.3"
 DEC. LAT.) 40.163098
 DEC. LONG.) 80.566203

REFERENCE NOTES
 Boundaries as shown taken from deeds, tax maps and field locations. A full boundary survey is not expressed nor implied. All bearings are based on true north. Ownership taken from public records Brooke County, West Virginia OCTOBER 2011
 State Plane Coordinates & NAD 83 Lat/Long by differential submeter mapping grade GPS
 Drafted by: E.A.M.

FILE #: CHE 026
 DRAWING #: 1866
 SCALE: 1" = 1000'
 MINIMUM DEGREE OF ACCURACY: 1/200
 PROVEN SOURCE OF ELEVATION: SUBMETER MAPPING GRADE GPS

I, THE UNDERSIGNED, HEREBY CERTIFY THAT THIS PLAT IS CORRECT TO THE BEST OF MY KNOWLEDGE AND BELIEF AND SHOWS ALL THE INFORMATION REQUIRED BY LAW AND THE REGULATIONS ISSUED AND PRESCRIBED BY THE DEPARTMENT OF ENVIRONMENTAL PROTECTION.

Signed:

L.L.S. #2124 : Ernest J. Benchek III

(+) DENOTES LOCATION OF WELL ON UNITED STATES TOPOGRAPHIC MAPS WVDEP
 OFFICE OF OIL & GAS
 601 57TH STREET
 CHARLESTON, WV 25304

Well Type: Oil Waste Disposal Production Deep
 Gas Liquid Injection Storage Shallow

WATERSHED: UPPER OHIO SOUTH ELEVATION: 1,270'

COUNTY/DISTRICT: BROOKE / BUFFALO QUADRANGLE: BETHANY, WV.

SURFACE OWNER: JOHN W. AND JOSEPH T. HUPP AND LINDA H. DOUBLE ACREAGE: 184 +/-

OIL & GAS ROYALTY OWNER: JOHN W. AND JOSEPH T. HUPP AND LINDA H. DOUBLE ACREAGE: 609.83 +/-

LEASE NUMBERS:

DRILL CONVERT DRILL DEEPER REDRILL FRACTURE OR STIMULATE
 PLUG OFF FORMATION PERFORATE NEW FORMATION PLUG & ABANDON
 CLEAN OUT & REPLUG OTHER CHANGE (SPECIFY):

TARGET FORMATION: MARCELLUS ESTIMATED DEPTH: TVD: 6204' TMD: 11160'

WELL OPERATOR: CHESAPEAKE APPALACHIA, LLC. DESIGNATED AGENT: ERIC GILLESPIE
 ADDRESS: PO BOX 18496 ADDRESS: PO BOX 6070
 CITY: OKLAHOMA CITY STATE: OK ZIP CODE: 73154-0496 CITY: CHARLESTON STATE: WV ZIP CODE: 25362

05/25/2012

WELL JOHN HUPP BRK 6H
QUAD BETHANY WV

