

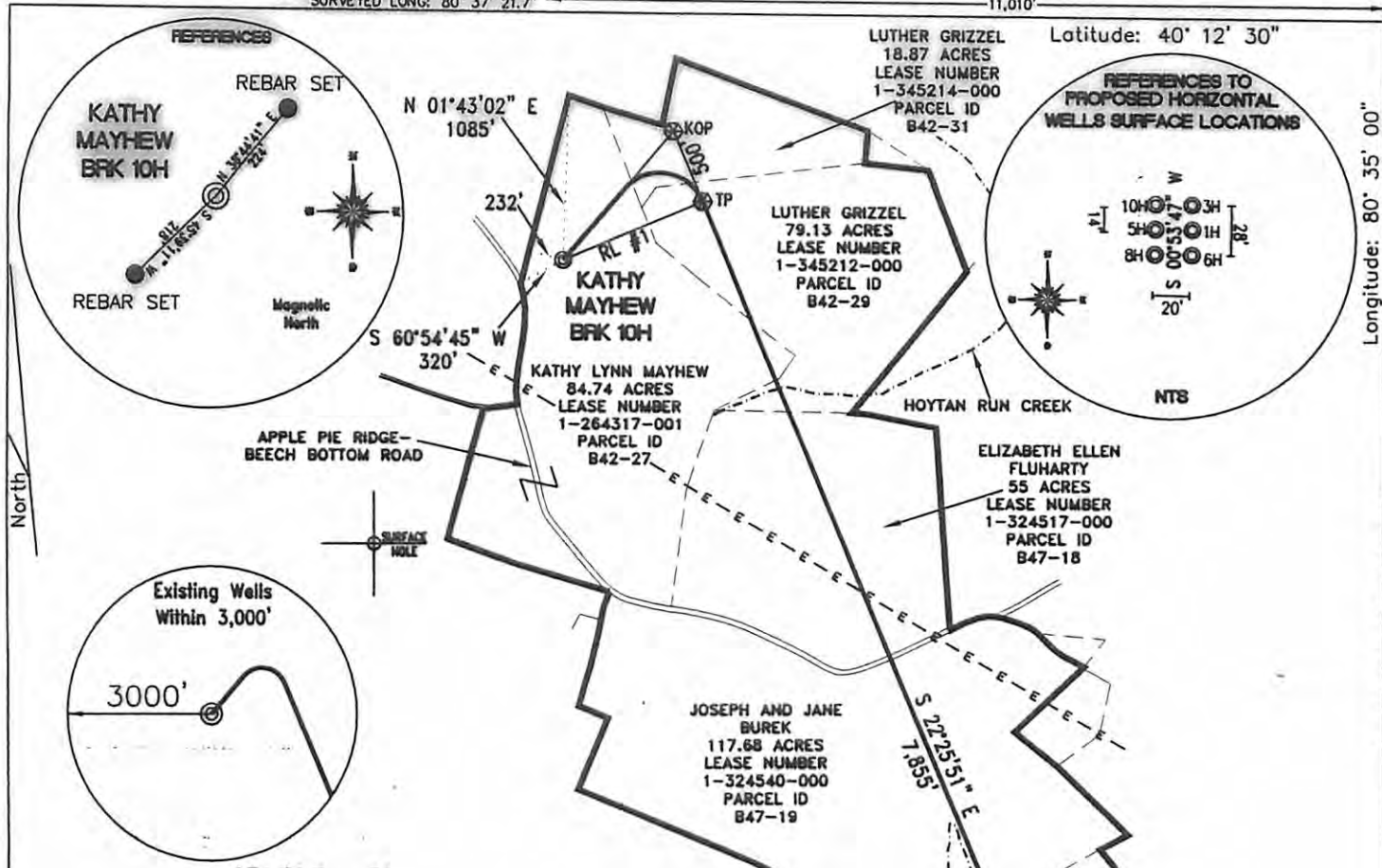
SURFACE HOLE DEC. LONG: 80.622687  
 SURVEYED LONG: 80° 37' 21.7"

11.010'

Latitude: 40° 12' 30"

Longitude: 80° 35' 00"

SURFACE HOLE DEC. LAT: 40.192451  
 SURVEYED LAT: 40° 11' 32.8"



<b>TH (MAD 83)</b> N) 618419.7 E) 1654860.8 LAT.) 40°11'32.8" LONG.) 80°37'21.7" DEC. LAT.) 40.192451 DEC. LONG.) 80.622687	<b>TP (MAD 83)</b> N) 618814.6 E) 1655779.5 LAT.) 40°11'36.8" LONG.) 80°37'09.9" DEC. LAT.) 40.193566 DEC. LONG.) 80.619417
<b>TH (MAD 27)</b> N) 618382.8 E) 1686295.6 LAT.) 40°11'32.6" LONG.) 80°37'22.4" DEC. LAT.) 40.192380 DEC. LONG.) 80.622890	<b>TP (MAD 27)</b> N) 618777.6 E) 1687214.3 LAT.) 40°11'36.6" LONG.) 80°37'10.6" DEC. LAT.) 40.193495 DEC. LONG.) 80.619619
<b>KOP (MAD 83)</b> N) 619274.0 E) 1655582.0 LAT.) 40°11'41.4" LONG.) 80°37'12.5" DEC. LAT.) 40.194821 DEC. LONG.) 80.620144	<b>BOTTOM HOLE (MAD 83)</b> N) 611553.9 E) 1658776.7 LAT.) 40°10'25.5" LONG.) 80°36'30.1" DEC. LAT.) 40.173739 DEC. LONG.) 80.608368
<b>KOP (MAD 27)</b> N) 619237.0 E) 1687016.9 LAT.) 40°11'41.1" LONG.) 80°37'13.2" DEC. LAT.) 40.194749 DEC. LONG.) 80.620346	<b>BOTTOM HOLE (MAD 27)</b> N) 611517.0 E) 1690211.5 LAT.) 40°10'25.2" LONG.) 80°36'30.9" DEC. LAT.) 40.173667 DEC. LONG.) 80.608571

**REFERENCE LINES**  
 RL #1  
 N 66°44'28" E 1000'

**REFERENCE NOTES**  
 Boundaries as shown taken from deeds, tax maps and field locations. A full boundary survey is not expressed nor implied. All bearings are based on true north. Ownership taken from public records Brooke County, West Virginia MARCH 2011  
 State Plane Coordinates & NAD 83 Lat/Long by differential submeter mapping grade GPS  
 Drafted by: E.A.H.

<b>TH (MAD 83)</b> N) 4449186.0 E) 532116.7	<b>BOTTOM HOLE (MAD 83)</b> N) 4447114.4 E) 533344.7
---	--

FILE #: CHE 059  
 DRAWING #: 1641  
 SCALE: 1"=1200'  
 MINIMUM DEGREE OF ACCURACY: 1/200  
 PROVEN SOURCE SUBMETER MAPPING OF ELEVATION: GRADE GPS

I, THE UNDERSIGNED, HEREBY CERTIFY THAT THIS PLAT IS CORRECT TO THE BEST OF MY KNOWLEDGE AND BELIEF AND SHOWS ALL THE INFORMATION REQUIRED BY LAW AND THE REGULATIONS ISSUED AND PRESCRIBED BY THE DEPARTMENT OF ENVIRONMENTAL PROTECTION.  
 Signed:   
 L.L.S. #2124 : Ernest J. Benchek III



(+) DENOTES LOCATION OF WELL ON UNITED STATES TOPOGRAPHIC MAPS WVDEP  
 OFFICE OF OIL & GAS  
 601 57TH STREET  
 CHARLESTON, WV 25304

DATE: DECEMBER 9, 2011  
 OPERATOR'S WELL #: KATHY MAYHEW BRK 10H  
 API WELL #: 47 09 00129H6A  
 STATE COUNTY PERMIT  
**CANCELLED**

WELL Type:  Oil  Waste Diposal  Production  Deep  
 Gas  Liquid Injection  Storage  Shallow

WATERSHED: UPPER OHIO SOUTH ELEVATION: 1,280'  
 COUNTY/DISTRICT: BROOKE/BUFFALO QUADRANGLE: BETHANY WV.  
 SURFACE OWNER: KATHY LYNN MAYHEW ACREAGE: 84.74 +/-  
 OIL & GAS ROYALTY OWNER: KATHY LYNN MAYHEW ACREAGE: 440.16 +/-  
 LEASE NUMBERS: \_\_\_\_\_

DRILL  CONVERT  DRILL DEEPER  REDRILL  FRACTURE OR STIMULATE   
 PLUG OFF FORMATION  PERFORATE NEW FORMATION  PLUG & ABANDON   
 CLEAN OUT & REPLUG  OTHER CHANGE  (SPECIFY): \_\_\_\_\_

TARGET FORMATION: MARCELLUS ESTIMATED DEPTH: TVD: 5985' TMD: 14282'  
 WELL OPERATOR : CHESAPEAKE APPALACHIA, LLC. DESIGNATED AGENT : ERIC B. GILLESPIE  
 ADDRESS: PO BOX 18496 ADDRESS: Po Box 6070  
 CITY: OKLAHOMA CITY STATE: OK ZIP CODE: 73154-0496 CITY: CHARLESTON STATE: WV 06/27/2014