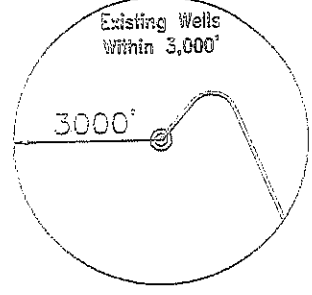
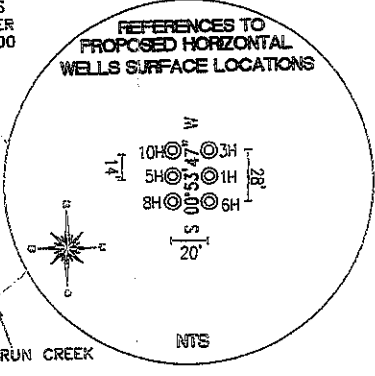
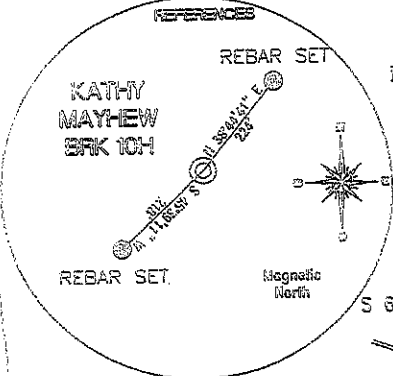
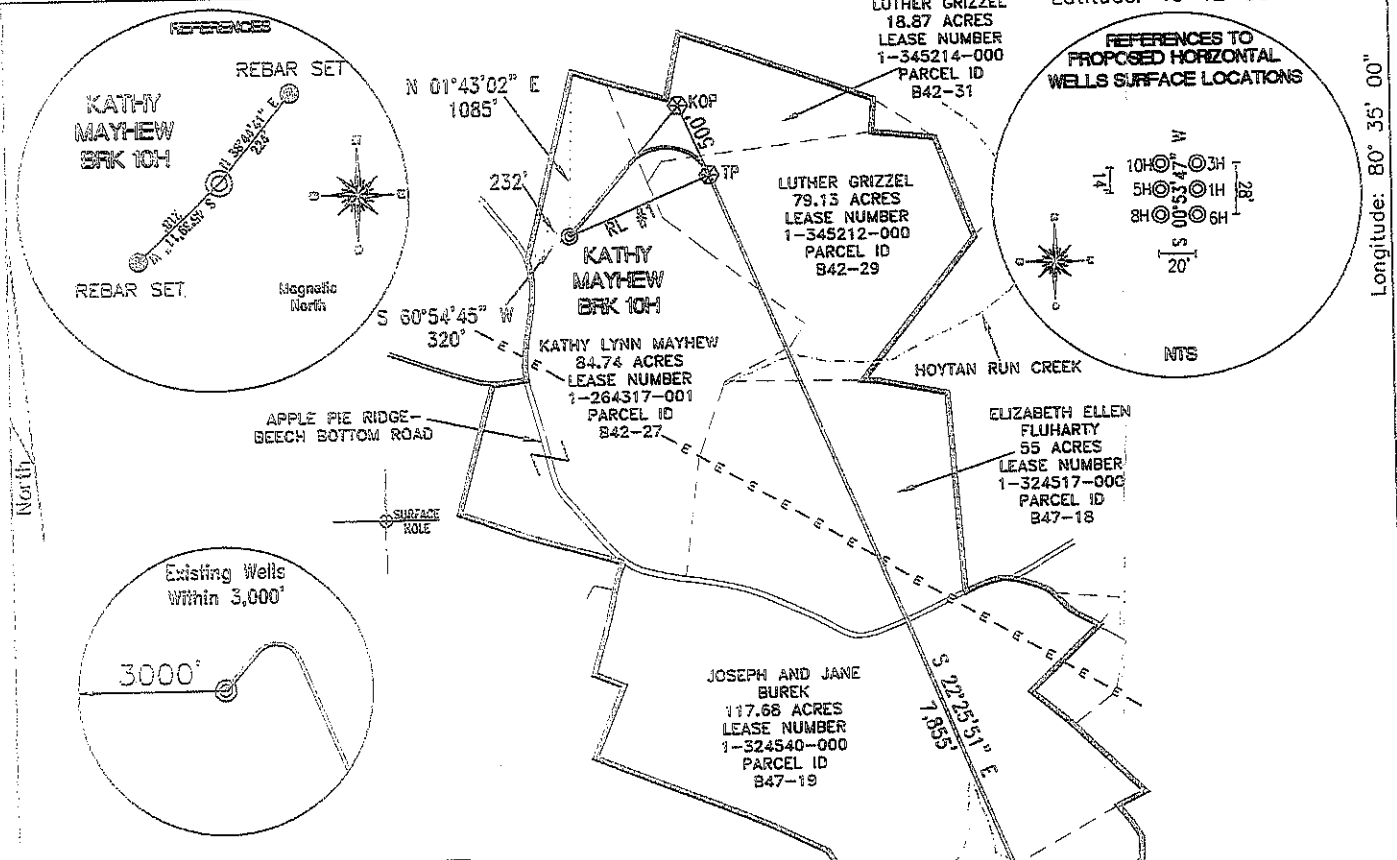


SURFACE HOLE DEC. LONG: 80.622687  
 SURVEYED LONG: 80° 37' 21.7"

11.010'

Latitude: 40° 12' 30"

Longitude: 80° 35' 00"



TH (NAD 83) N) 618419.7 E) 1654860.8 LAT.) 40°11'32.8" LONG.) 80°37'21.7" DEC. LAT.) 40.192451 DEC. LONG.) 80.622687	TP (NAD 83) N) 618514.6 E) 1655779.5 LAT.) 40°11'36.8" LONG.) 80°37'09.9" DEC. LAT.) 40.193566 DEC. LONG.) 80.619417
TH (NAD 27) N) 618382.8 E) 1688295.8 LAT.) 40°11'32.8" LONG.) 80°37'22.4" DEC. LAT.) 40.192380 DEC. LONG.) 80.622890	TP (NAD 27) N) 618777.5 E) 1687214.3 LAT.) 40°11'36.8" LONG.) 80°37'10.6" DEC. LAT.) 40.193495 DEC. LONG.) 80.619619
KOP (NAD 83) N) 619274.0 E) 1655582.0 LAT.) 40°11'41.4" LONG.) 80°37'12.5" DEC. LAT.) 40.194821 DEC. LONG.) 80.620144	BOTTOM HOLE (NAD 83) N) 611553.9 E) 1658776.7 LAT.) 40°10'25.5" LONG.) 80°36'30.1" DEC. LAT.) 40.173739 DEC. LONG.) 80.608368
KOP (NAD 27) N) 619237.0 E) 1687016.9 LAT.) 40°11'41.1" LONG.) 80°37'13.2" DEC. LAT.) 40.194749 DEC. LONG.) 80.620348	BOTTOM HOLE (NAD 27) N) 611517.0 E) 1690211.5 LAT.) 40°10'25.2" LONG.) 80°36'30.9" DEC. LAT.) 40.173667 DEC. LONG.) 80.608571

REFERENCE LINE  
 RL #1  
 N 68°44'28" E 1000'

REFERENCE NOTE  
 Boundaries as shown taken from deeds, tax maps and field locations. A full boundary survey is not expressed nor implied. All bearings are based on true north. Ownership taken from public records Brooke County, West Virginia MARCH 2011 State Plane Coordinates & NAD 83 Lat/Long by differential submeter mapping grade GPS Drafted by: E.A.M.

TH (NAD 83) N) 4449186.0 E) 532116.7	BOTTOM HOLE (NAD 83) N) 4447114.4 E) 533344.7
--	---

FILE #: CHE 059  
 DRAWING #: 1641  
 SCALE: 1"=1200'  
 MINIMUM DEGREE OF ACCURACY: 1/200  
 PROVEN SOURCE SUBMETER MAPPING OF ELEVATION: GRADE GPS

I, THE UNDERSIGNED, HEREBY CERTIFY THAT THIS PLAT IS CORRECT TO THE BEST OF MY KNOWLEDGE AND BELIEF AND SHOWS ALL THE INFORMATION REQUIRED BY LAW AND THE REGULATIONS ISSUED AND PRESCRIBED BY THE DEPARTMENT OF ENVIRONMENTAL PROTECTION.  
 Signed: \_\_\_\_\_  
 L.L.S. #2124 : Ernest J. Benchek III

(+) DENOTES LOCATION OF WELL ON UNITED STATES TOPOGRAPHIC MAPS WVDEP

OFFICE OF OIL & GAS  
 601 5TH STREET  
 CHARLESTON, WV 25304

Well Type:  Oil  Waste Disposal  Production  Deep  
 Gas  Liquid Injection  Storage  Shallow

WATERSHED: UPPER OHIO SOUTH

COUNTY/DISTRICT: BROOKE/BUFFALO

SURFACE OWNER: KATHY LYNN MAYHEW

OIL & GAS ROYALTY OWNER: KATHY LYNN MAYHEW

LEASE NUMBERS:

DRILL  CONVERT  DRILL DEEPER  REDRILL  FRACTURE OR STIMULATE   
 PLUG OFF FORMATION  PERFORATE NEW FORMATION  PLUG & ABANDON   
 CLEAN OUT & REPLUG  OTHER CHANGE  (SPECIFY): \_\_\_\_\_

TARGET FORMATION: MARCELLUS

WELL OPERATOR: CHESAPEAKE APPALACHIA, LLC.

ADDRESS: PO BOX 18496

CITY: OKLAHOMA CITY STATE: OK ZIP CODE: 73154-0496

DATE: DECEMBER 9, 2011

OPERATOR'S WELL #: KATHY MAYHEW BRK 10H

API WELL #: 47 09 00129H6A  
 STATE COUNTY PERMIT

ELEVATION: 1,280'

QUADRANGLE: BETHANY WV.

ACREAGE: 84.74 +/-

ACREAGE: 440.16 +/-

ESTIMATED DEPTH: TVD: 5985' TMD: 14282'

DESIGNATED AGENT: ERIC B. GILLESPIE

ADDRESS: PO BOX 6070

CITY: CHARLESTON STATE: WV ZIP CODE: 25362

06/15/2012

9-00129162

