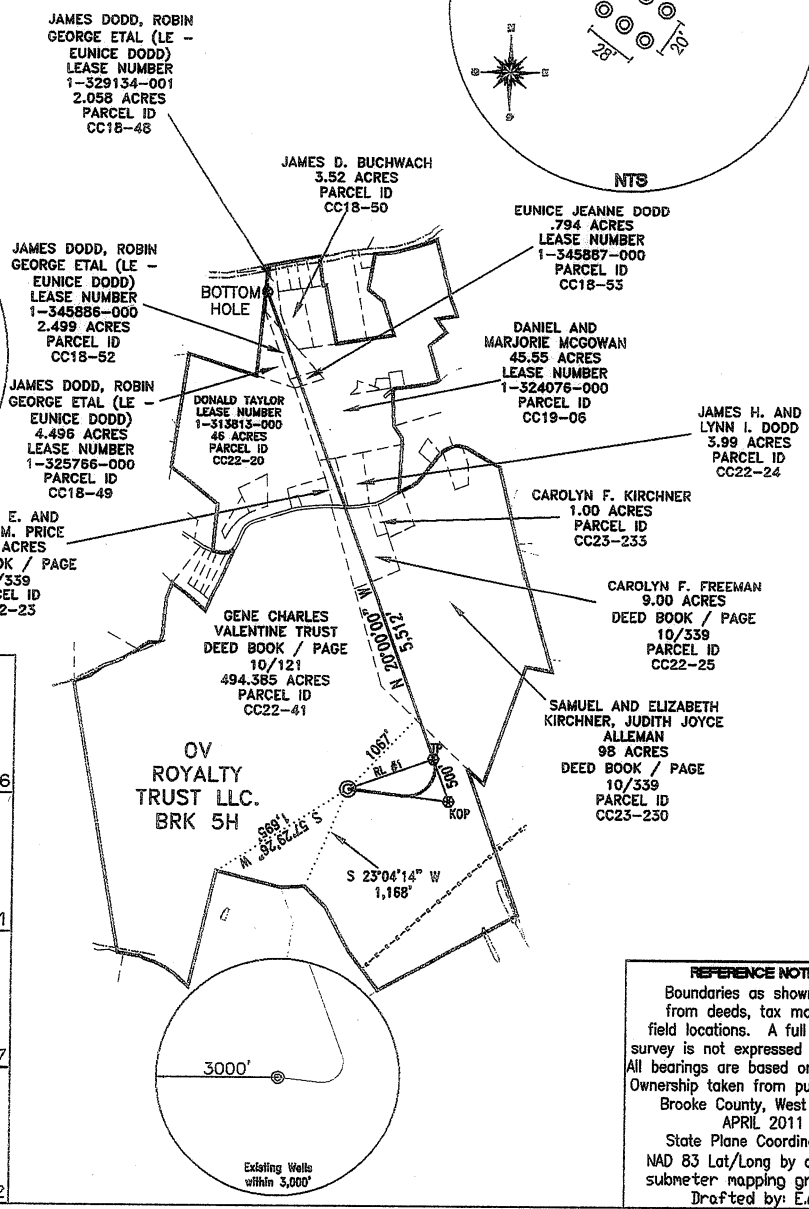
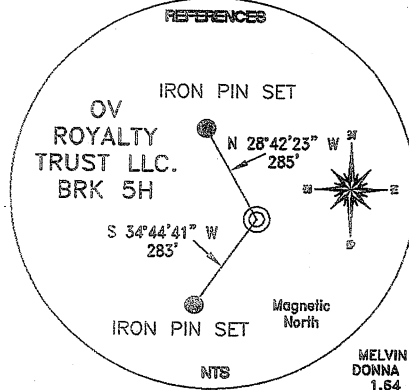
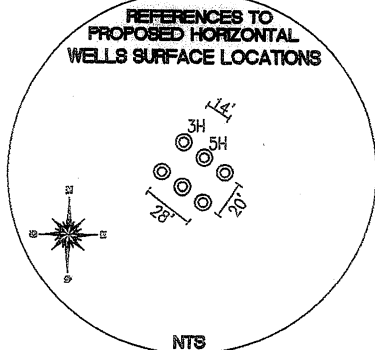


**REFERENCE LINES**  
 RL #1  
 N 70°00'00" E 992'

**TOP HOLE (UTM 83)**  
 N) 4459551.7  
 E) 535330.4  
**BOTTOM HOLE (UTM 83)**  
 N) 4461228.1  
 E) 535012.0

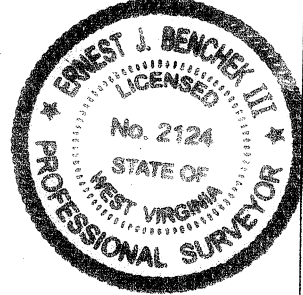


<b>TH (NAD 83)</b> N) 652259.5 E) 1665976.9 LAT.) 40°17'08.6" LONG.) 80°35'03.7" DEC. LAT.) 40.285709 DEC. LONG.) 80.584363	<b>TP (NAD 83)</b> N) 652598.8 E) 1666909.2 LAT.) 40°17'12.0" LONG.) 80°34'51.7" DEC. LAT.) 40.286671 DEC. LONG.) 80.581036
<b>TH (NAD 27)</b> N) 652222.4 E) 1697411.4 LAT.) 40°17'08.3" LONG.) 80°35'04.4" DEC. LAT.) 40.285639 DEC. LONG.) 80.584568	<b>TP (NAD 27)</b> N) 652561.7 E) 1698343.7 LAT.) 40°17'11.8" LONG.) 80°34'52.5" DEC. LAT.) 40.286601 DEC. LONG.) 80.581241
<b>KOP (NAD 83)</b> N) 652129.0 E) 1667080.2 LAT.) 40°17'07.4" LONG.) 80°34'49.4" DEC. LAT.) 40.285387 DEC. LONG.) 80.580403	<b>BOTTOM HOLE (NAD 83)</b> N) 657778.3 E) 1665024.0 LAT.) 40°18'03.0" LONG.) 80°35'16.9" DEC. LAT.) 40.300825 DEC. LONG.) 80.588017
<b>KOP (NAD 27)</b> N) 652091.9 E) 1698514.7 LAT.) 40°17'07.1" LONG.) 80°34'50.2" DEC. LAT.) 40.285317 DEC. LONG.) 80.580608	<b>BOTTOM HOLE (NAD 27)</b> N) 657741.2 E) 1696458.6 LAT.) 40°18'02.7" LONG.) 80°35'17.6" DEC. LAT.) 40.300755 DEC. LONG.) 80.588222

**REFERENCE NOTES**  
 Boundaries as shown taken from deeds, tax maps and field locations. A full boundary survey is not expressed nor implied. All bearings are based on true north. Ownership taken from public records Brooke County, West Virginia APRIL 2011  
 State Plane Coordinates & NAD 83 Lat/Long by differential submeter mapping grade GPS  
 Drafted by: E.A.M.

FILE #: CHE 054  
 DRAWING #: 1808  
 SCALE: 1"=2000'  
 MINIMUM DEGREE OF ACCURACY: 1/200  
 PROVEN SOURCE OF ELEVATION: SUBMETER MAPPING GRADE GPS

I, THE UNDERSIGNED, HEREBY CERTIFY THAT THIS PLAT IS CORRECT TO THE BEST OF MY KNOWLEDGE AND BELIEF AND SHOWS ALL THE INFORMATION REQUIRED BY LAW AND THE REGULATIONS ISSUED AND PRESCRIBED BY THE DEPARTMENT OF ENVIRONMENTAL PROTECTION.  
 Signed:   
 L.L.S. #2124 : Ernest J. Benchek III



(+) DENOTES LOCATION OF WELL ON UNITED STATES TOPOGRAPHIC MAPS  
 WVDEP  
**OFFICE OF OIL & GAS**  
 601 57TH STREET  
 CHARLESTON, WV 25304

Well Type:  Oil  Waste Disposal  Production  Deep  
 Gas  Liquid Injection  Storage  Shallow

WATERSHED: UPPER OHIO SOUTH ELEVATION: 1,185'

COUNTY/DISTRICT: BROOKE/CROSS CREEK QUADRANGLE: STEUBENVILLE EAST

SURFACE OWNER: GENE CHARLES VALENTINE TRUST ACREAGE: 494.385 +/-  
 OIL & GAS ROYALTY OWNER: GENE CHARLES VALENTINE TRUST ACREAGE: 592.385 +/-  
 LEASE NUMBERS: \_\_\_\_\_

DATE: DECEMBER 16, 2011  
 OPERATOR'S WELL #: O.V. ROYALTY TRUST LLC. BRK 5H  
 API WELL #: 47 09 00120H  
 STATE COUNTY PERMIT

DRILL  CONVERT  DRILL DEEPER  REDRILL  FRACTURE OR STIMULATE   
 PLUG OFF FORMATION  PERFORATE NEW FORMATION  PLUG & ABANDON   
 CLEAN OUT & REPLUG  OTHER CHANGE  (SPECIFY): \_\_\_\_\_

TARGET FORMATION: MARCELLUS ESTIMATED DEPTH: TVD: 6,000' TMD: 11,512'  
 WELL OPERATOR : CHESAPEAKE APPALACHIA, LLC. DESIGNATED AGENT : ERIC B. GILLESPIE  
 ADDRESS: PO BOX 18496 ADDRESS: Po Box 6070  
 CITY: OKLAHOMA CITY STATE: OK ZIP CODE: 73154-0496 CITY: CHARLESTON STATE: WV ZIP CODE: 25301



