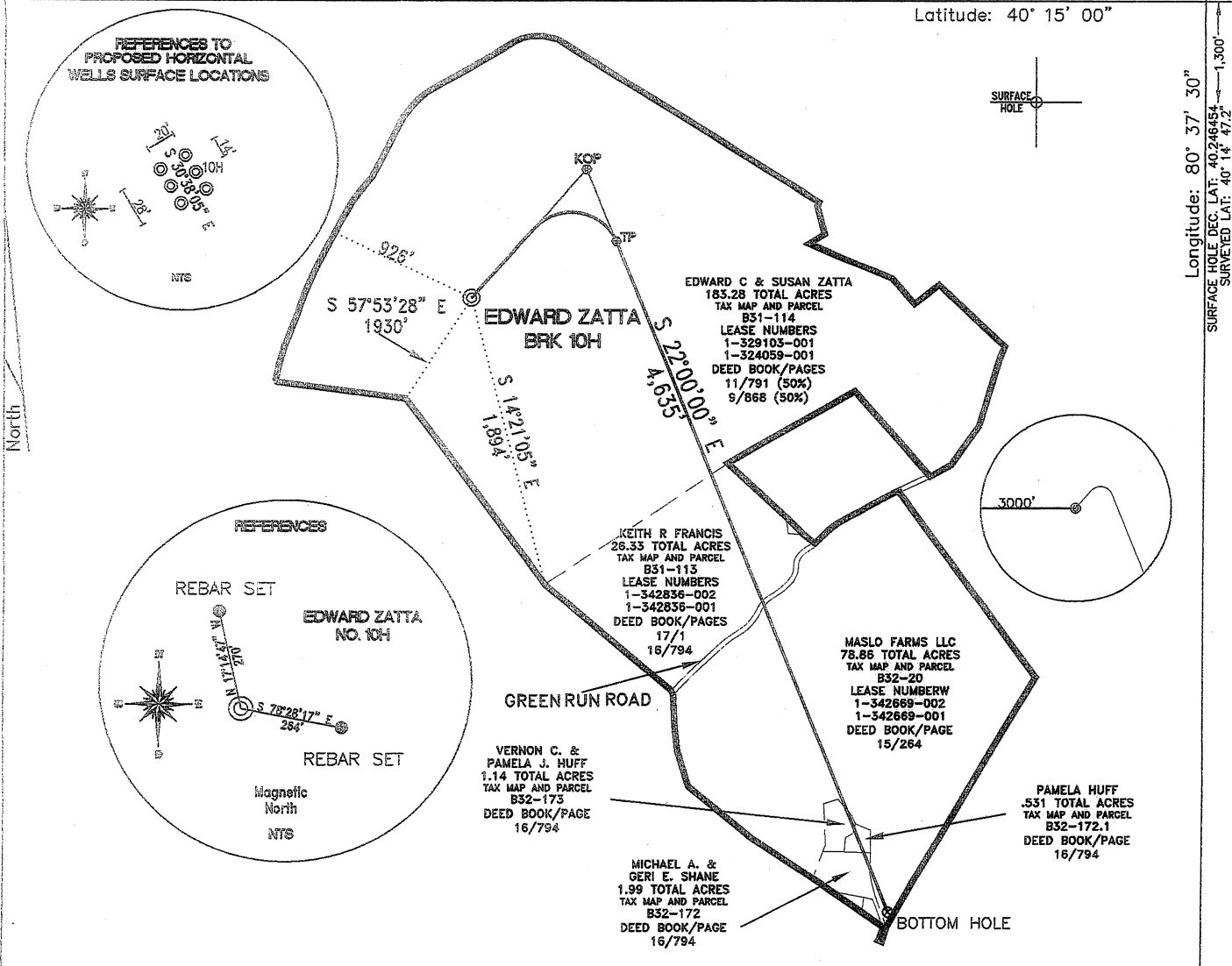


SURFACE HOLE DEC. LONG: 80.632583
 SURVEYED LONG: 80° 37' 57.3"
 Latitude: 40° 15' 00"

Longitude: 80° 37' 30"
 SURFACE HOLE DEC. LAT: 40.246454
 SURVEYED LAT: 40° 14' 47.2"

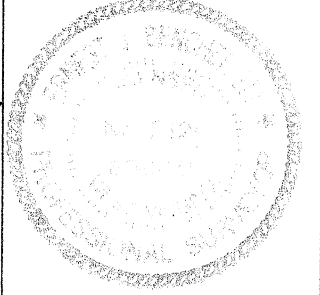


TOP HOLE (NAD 83)	BOTTOM HOLE (NAD 83)	KOP (NAD 83)	TP (NAD 83)
N) 638124.2 E) 1652368.8 LAT.) 40°14'47.2" LONG.) 80°37'56.9" DEC. LAT.) 40.246450 DEC. LONG.) 80.632495	N) 634193.2 E) 1655012.0 LAT.) 40°14'08.7" LONG.) 80°37'22.2" DEC. LAT.) 40.235751 DEC. LONG.) 80.622851	N) 638954.2 E) 1653088.4 LAT.) 40°14'55.5" LONG.) 80°37'47.8" DEC. LAT.) 40.248753 DEC. LONG.) 80.629955	N) 638490.6 E) 1653275.7 LAT.) 40°14'50.9" LONG.) 80°37'45.3" DEC. LAT.) 40.247487 DEC. LONG.) 80.629263
TOP HOLE (NAD 27)	BOTTOM HOLE (NAD 27)	KOP (NAD 27)	TP (NAD 27)
N) 638087.2 E) 1683803.7 LAT.) 40°14'46.9" LONG.) 80°37'57.7" DEC. LAT.) 40.246379 DEC. LONG.) 80.632697	N) 634156.2 E) 1686446.9 LAT.) 40°14'08.4" LONG.) 80°37'22.9" DEC. LAT.) 40.235680 DEC. LONG.) 80.623053	N) 638917.2 E) 1684523.3 LAT.) 40°14'55.2" LONG.) 80°37'48.5" DEC. LAT.) 40.248682 DEC. LONG.) 80.630157	N) 638453.6 E) 1684710.6 LAT.) 40°14'50.6" LONG.) 80°37'46.0" DEC. LAT.) 40.247416 DEC. LONG.) 80.629465

REFERENCE NOTES
 Boundaries as shown taken from deeds, tax maps and field locations. A full boundary survey is not expressed nor implied. All bearings are based on true north. Ownership taken from public records Brooke County, West Virginia JUNE 2011 State Plane Coordinates & NAD 83 Lat/Long by differential submeter mapping grade GPS
 Drafted by: E.A.M.

FILE #: CHE 081
 DRAWING #: 1803
 SCALE: 1" = 1000'
 MINIMUM DEGREE OF ACCURACY: 1/200
 PROVEN SOURCE OF ELEVATION: SUBMETER MAPPING GRADE GPS

I, THE UNDERSIGNED, HEREBY CERTIFY THAT THIS PLAT IS CORRECT TO THE BEST OF MY KNOWLEDGE AND BELIEF AND SHOWS ALL THE INFORMATION REQUIRED BY LAW AND THE REGULATIONS ISSUED AND PRESCRIBED BY THE DEPARTMENT OF ENVIRONMENTAL PROTECTION.
 Signed:
 L.L.S. #2124 : Ernest J. Benchek III



(+) DENOTES LOCATION OF WELL ON UNITED STATES TOPOGRAPHIC MAPS
 WVDEP
 OFFICE OF OIL & GAS
 601 57TH STREET
 CHARLESTON, WV 25304
 Well Type: Oil Waste Diposal Production Deep
 Gas Liquid Injection Storage Shallow
 WATERSHED: UPPER OHIO SOUTH ELEVATION: 1,220'
 COUNTY/DISTRICT: BROOKE/BUFFALO QUADRANGLE: TILTONSVILLE
 SURFACE OWNER: EDWARD & SUSAN ZATTA ACREAGE: 183.28 +/-
 OIL & GAS ROYALTY OWNER: EDWARD & SUSAN ZATTA ACREAGE: 292.131 +/-
 LEASE NUMBERS: _____

DATE: AUGUST 24, 2011
 OPERATOR'S WELL #: EDWARD ZATTA BRK 10H
 API WELL #: 47 09
 STATE COUNTY PERMIT
 DRILL CONVERT DRILL DEEPER REDRILL FRACTURE OR STIMULATE
 PLUG OFF FORMATION PERFORATE NEW FORMATION PLUG & ABANDON
 CLEAN OUT & REPLUG OTHER CHANGE (SPECIFY): _____
 TARGET FORMATION: MARCELLUS ESTIMATED DEPTH: TVD: 6,000' TMD: 10,635'
 WELL OPERATOR: CHESAPEAKE APPALACHIA, LLC. DESIGNATED AGENT: ERIC GILLESPIE
 ADDRESS: PO BOX 18496 ADDRESS: PO BOX 6070
 CITY: OKLAHOMA CITY STATE: OK ZIP CODE: 73154-0496 CITY: CHARLESTON STATE: WV ZIP CODE: 25301

