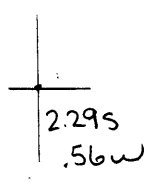


40°22'30"

**Latitude**

80°35'00"

**Longitude**



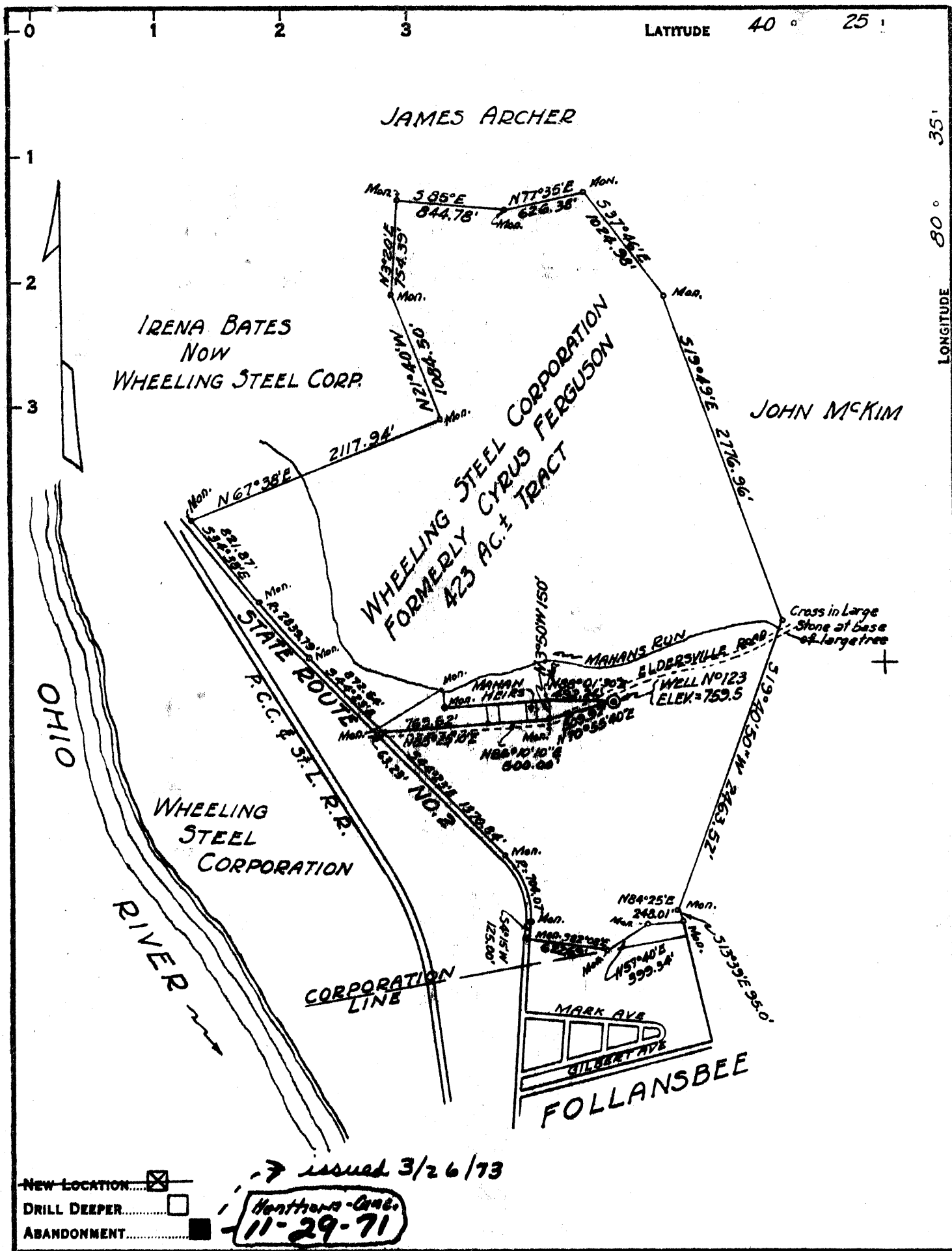
**Topo Location**

7.5' Loc. \_\_\_\_\_ 15' Loc. \_\_\_\_\_  
 \_\_\_\_\_ (calc.) \_\_\_\_\_

**Company** Wheeling Steel Corp  
**Farm** Wheeling Steel Corp #12a  
**15' Quad** \_\_\_\_\_  
 (sec.)  
**7.5' Quad** Steubenville East  
**District** Cross Creek

**WELL LOCATION PLAT**

**County** 009 **Permit** 54



NEW LOCATION  
 DRILL DEEPER  
 ABANDONMENT

→ issued 3/26/73

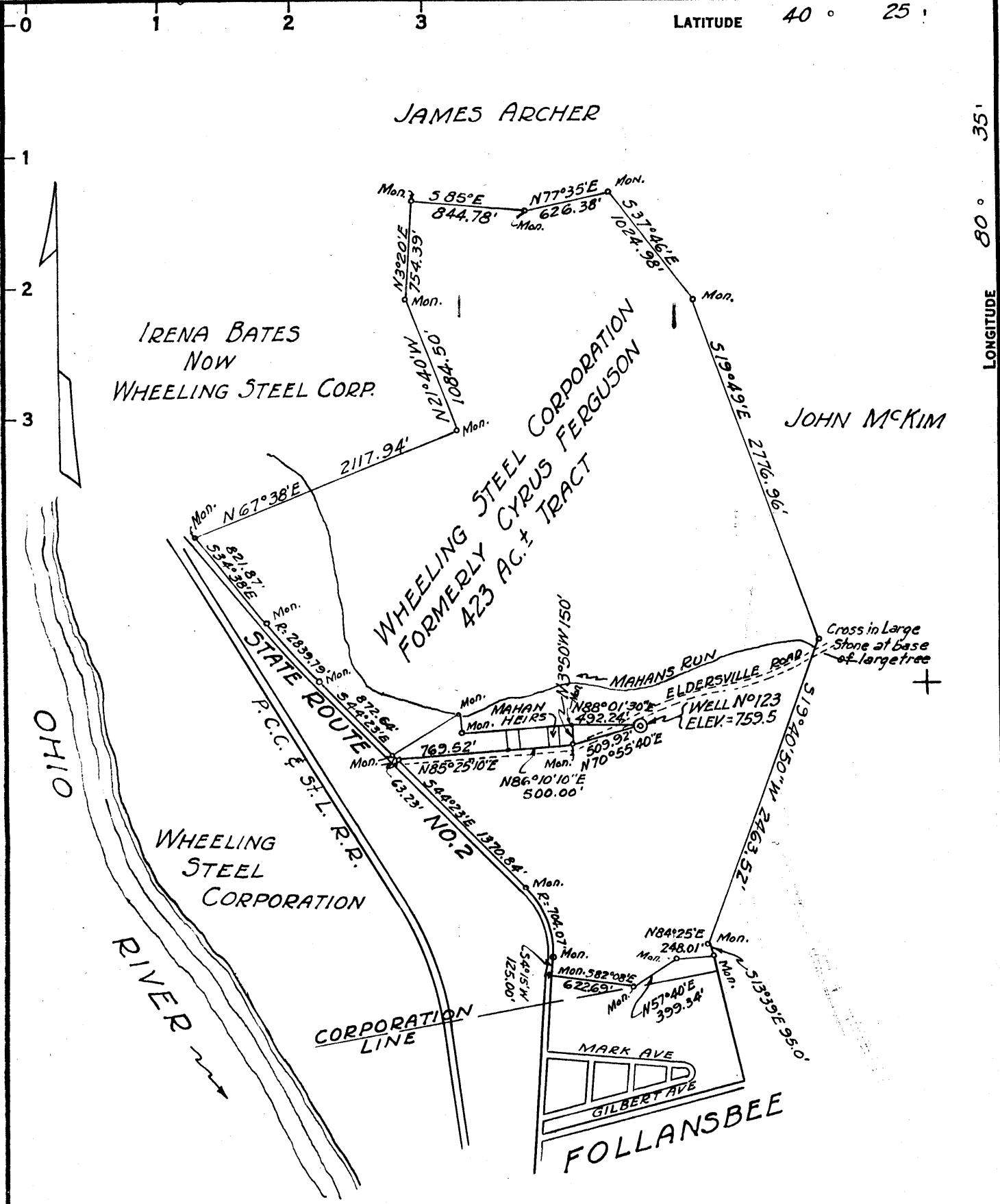
Henthorn - Cont.  
 11-29-71

COMPANY ~~WHEELING STEEL CORPORATION~~  
 ADDRESS ~~(GENERAL OFFICE) WHEELING, W. VA.~~  
 FARM ~~WHEELING STEEL CORPORATION~~ *FORMERLY CYRUS FERGUSON*  
 TRACT \_\_\_\_\_ ACRES 423 1/2 LEASE No. \_\_\_\_\_  
 WELL (FARM) No. ~~122~~ 123 SERIAL No. \_\_\_\_\_  
 ELEVATION (SPIRIT LEVEL) 759.5  
 QUADRANGLE STUBENVILLE C  
 COUNTY BROOKE DISTRICT CROSS CREEK  
 ENGINEER GEORGE K. LANG - C.C. SMITH'S SONS ENGRS  
 ENGINEER'S REGISTRATION No. 1590  
 FILE No. \_\_\_\_\_ DRAWING No. \_\_\_\_\_  
 DATE APRIL 5, 1949 SCALE 1" = 1000'

STATE OF WEST VIRGINIA  
 DEPARTMENT OF MINES  
 OIL AND GAS DIVISION  
 CHARLESTON

WELLS LOCATION MAP  
 FILE No. BRO-54-P  
*Henthorn*  
Plugging Cancelled - 5-16-72

+ DENOTES LOCATION OF WELL ON UNITED STATES TOPOGRAPHIC MAPS. SCALE 1 TO 62,500. LATITUDE AND LONGITUDE LINES BEING REPRESENTED BY BORDER LINES AS SHOWN.  
 - DENOTES ONE INCH SPACES ON BORDER LINE OF ORIGINAL TRACING.



NEW LOCATION   
 DRILL DEEPER   
 ABANDONMENT  - 11-29-71

COMPANY WHEELING STEEL CORPORATION  
 ADDRESS Box 42, Sistersville, W. Va. 26176  
 FARM WHEELING STEEL CORPORATION FORMERLY CYRUS FERGUSON  
 TRACT \_\_\_\_\_ ACRES 423± LEASE No. \_\_\_\_\_  
 WELL (FARM) No. 123 SERIAL No. 127  
 ELEVATION (SPIRIT LEVEL) 759.5  
 QUADRANGLE STEBENVILLE  
 COUNTY BROOKE DISTRICT CROSS CREEK  
 ENGINEER GEORGE K. LANG - C.C. SMITH'S SONS ENG'G  
 ENGINEER'S REGISTRATION No. 1590  
 FILE No. \_\_\_\_\_ DRAWING No. \_\_\_\_\_  
 DATE APRIL 5, 1949 SCALE 1" = 1000'

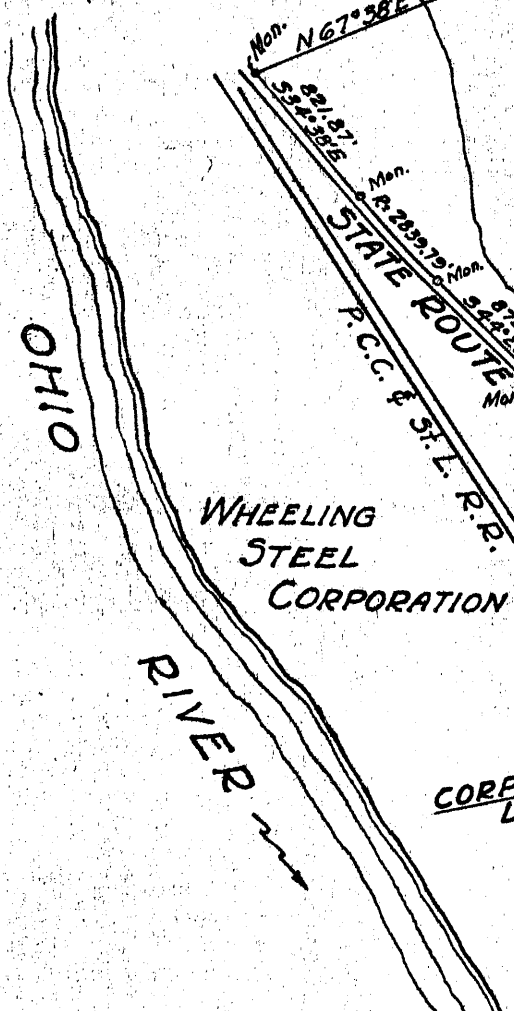
STATE OF WEST VIRGINIA  
 DEPARTMENT OF MINES  
 OIL AND GAS DIVISION  
 CHARLESTON  
**WELL LOCATION MAP**  
 FILE No. BRO-54-P  
Plugging Cancelled - 5-16-72  
 + DENOTES LOCATION OF WELL ON UNITED STATES TOPOGRAPHIC MAPS, SCALE 1 TO 62,500. LATITUDE AND LONGITUDE LINES BEING REPRESENTED BY BORDER LINES AS SHOWN.  
 - DENOTES ONE INCH SPACES ON BORDER LINE OF ORIGINAL TRACING.

JAMES ARCHER

IRENA BATES  
NOW  
WHEELING STEEL CORP.

JOHN MCKIM

WHEELING STEEL CORPORATION  
FORMERLY CYRUS FERGUSON  
423 AC.± TRACT



NEW LOCATION   
 DRILL DEEPER   
 ABANDONMENT  - 11-29-71

COMPANY G. E. Henthorn WHEELING STEEL CORPORATION  
 ADDRESS Box 42, Sistersville, W. Va. 26112 (P.O. GENERAL OFFICE) WHEELING, W. VA.  
 FARM WHEELING STEEL CORPORATION FORMERLY CYRUS FERGUSON  
 TRACT \_\_\_\_\_ ACRES 423± LEASE NO. \_\_\_\_\_  
 WELL (FARM) NO. ~~122~~ 123 SERIAL NO. \_\_\_\_\_  
 ELEVATION (SPIRIT LEVEL) 759.6  
 QUADRANGLE STEBENVILLE  
 COUNTY BROOKE DISTRICT CROSS CREEK  
 ENGINEER GEORGE K. LANG - G. C. SMITH'S SONS ENGRS  
 ENGINEER'S REGISTRATION NO. 1590  
 FILE NO. \_\_\_\_\_ DRAWING NO. \_\_\_\_\_  
 DATE APRIL 5, 1949 SCALE 1" = 1000'

STATE OF WEST VIRGINIA  
 DEPARTMENT OF MINES  
 OIL AND GAS DIVISION  
 CHARLESTON

WELL LOCATION MAP

FILE NO. BRO-54-P

+ DENOTES LOCATION OF WELL ON UNITED STATES TOPOGRAPHIC MAPS, SCALE 1 TO 62,500. LATITUDE AND LONGITUDE LINES BEING REPRESENTED BY BORDER LINES AS SHOWN.  
 — DENOTES ONE INCH SPACES ON BORDER LINE OF ORIGINAL TRACING.

LATITUDE 40 25

LONGITUDE 80 35

JAMES ARCHER

IRENA BATES  
NOW  
WHEELING STEEL CORP.

JOHN MCKIM

WHEELING STEEL CORPORATION  
FORMERLY CYRUS FERGIUSON  
423 AC. ± TRACT

WHEELING  
STEEL  
CORPORATION

RIVER

STATE ROUTE  
P. C. C. & S. T. L. R. R.

CORPORATION  
LINE

MARK AVE  
GILBERT AVE  
FOLLANSBEE

Cross in Large  
Stone at Base  
of large tree

0.56 W  
5.20 A

APR 26 1948

- NEW LOCATION
- DRILL DEEPER
- ABANDONMENT

COMPANY WHEELING STEEL CORPORATION

ADDRESS (GENERAL OFFICE) WHEELING, W. VA.

FARM WHEELING STEEL CORPORATION FORMERLY CYRUS FERGIUSON

TRACT \_\_\_\_\_ ACRES 423 ± LEASE NO. \_\_\_\_\_

WELL (FARM) NO. 123 SERIAL NO. \_\_\_\_\_

ELEVATION (SPIRIT LEVEL) 759.5

QUADRANGLE STEBENVILLE

COUNTY BROOKE DISTRICT CROSS CREEK

ENGINEER GEORGE K. LANG - C. C. SMITH'S SONS ENGRS

ENGINEER'S REGISTRATION NO. 1590

FILE NO. \_\_\_\_\_ DRAWING NO. \_\_\_\_\_

DATE APRIL 5, 1949 SCALE 1" = 1000'

STATE OF WEST VIRGINIA  
DEPARTMENT OF MINES  
OIL AND GAS DIVISION  
CHARLESTON

WELL LOCATION MAP

FILE NO. BRO-54

— DENOTES LOCATION OF WELL ON UNITED STATES TOPOGRAPHIC MAPS, SCALE 1 TO 62,500, LATITUDE AND LONGITUDE LINES BEING REPRESENTED BY BORDER LINES AS SHOWN.

— DENOTES ONE INCH SPACES ON BORDER LINE OF ORIGINAL TRACING.

WHEELING STEEL CORP 123 (123?) - WHEELING STEEL CORP. - BRO-54

WEST VIRGINIA DEPARTMENT OF MINES  
OIL & GAS DIVISION  
W E L L R E C O R D

Permit No. Bro 54  
Steubenville Quad.

Oil Well  
CASING & TUBING

Company	Wheeling Steel Corp.			
Address	Wheeling, W.Va.	10	60	None
Farm	Corporation Acres 423	8½	280	280
Location	¾ mile East of Ohio River	6 5/8	1006	1006
Well No.	122 Elev. 759.5	2	tubing 1364	
District	Cross Creek Brooke County	Liners used none		
Surface	Wheeling Steel Corp., Wheeling, W.Va.			
Mineral	Same	No Packer		
Commenced	March 22, 1949			
Completed	July 15, 1949	Casing not cemented		
Date shot	June 28, 1949 Depth 1348 to 1362 with 150# gelatine			
Open flow	No record			
Volume	Small no record			
Rock Pressure	No record			
Oil	Five bbls. 1st 24 hrs.			
Fresh Water	40'			
Salt Water	585'			

Clay	Y	S	-	10
Sand	Br	S	10	40
Limestone	Wh	H	40	45
Slate	Blk	M	45	80
Red Rock		H	80	90
Shale	Gr	S	90	128
Sand	Br	S	128	190
Shale	Blk	S	190	224
Slate	Wh	M	224	260
Limestone	Wh	H	260	280
Slate	Blk	M	280	340
Slate	Gr	M	340	350
Limestone	Wh	H	350	360
Slate	Blk	M	360	400
Slate	Gr	M	400	440
Sand	Wh	S	440	495
Slate	Gr	M	495	540
Slate	Blk	M	540	585
Sand	Wh	M (Salt S)	585	630
Slate	Blk	M	630	660
Sand	Br	M	660	685
Slate	Blk	M	685	698
Limestone	Wh	H	698	798
Sand	Wh	M (Injun)	798	1000
Slate	Wh	H	1000	1005
Limestone	Wh	H	1005	1015
Slate	Blk	M	1015	1060
Slate & Shells	Blk	M	1060	1150
Shale	Gr	M	1150	1185
Limestone	Wh	H	1185	1215
Slate & Shells	Blk	M	1215	1324
Slate	Blk	H	1324	1346
Sand	Lt	S (Berea)	1346	1366
		brown		