

40° 22' 30"

Latitude

80° 35' 00"

Longitude

2.425
.74w

Topo Location

7.5' Loc. _____ 15' Loc. _____
 _____ (calc.) _____

Company Wheeling Steel Corp

Farm Wheeling Steel Corp #19

15' Quad _____
(sec.)

7.5' Quad Steubenville East

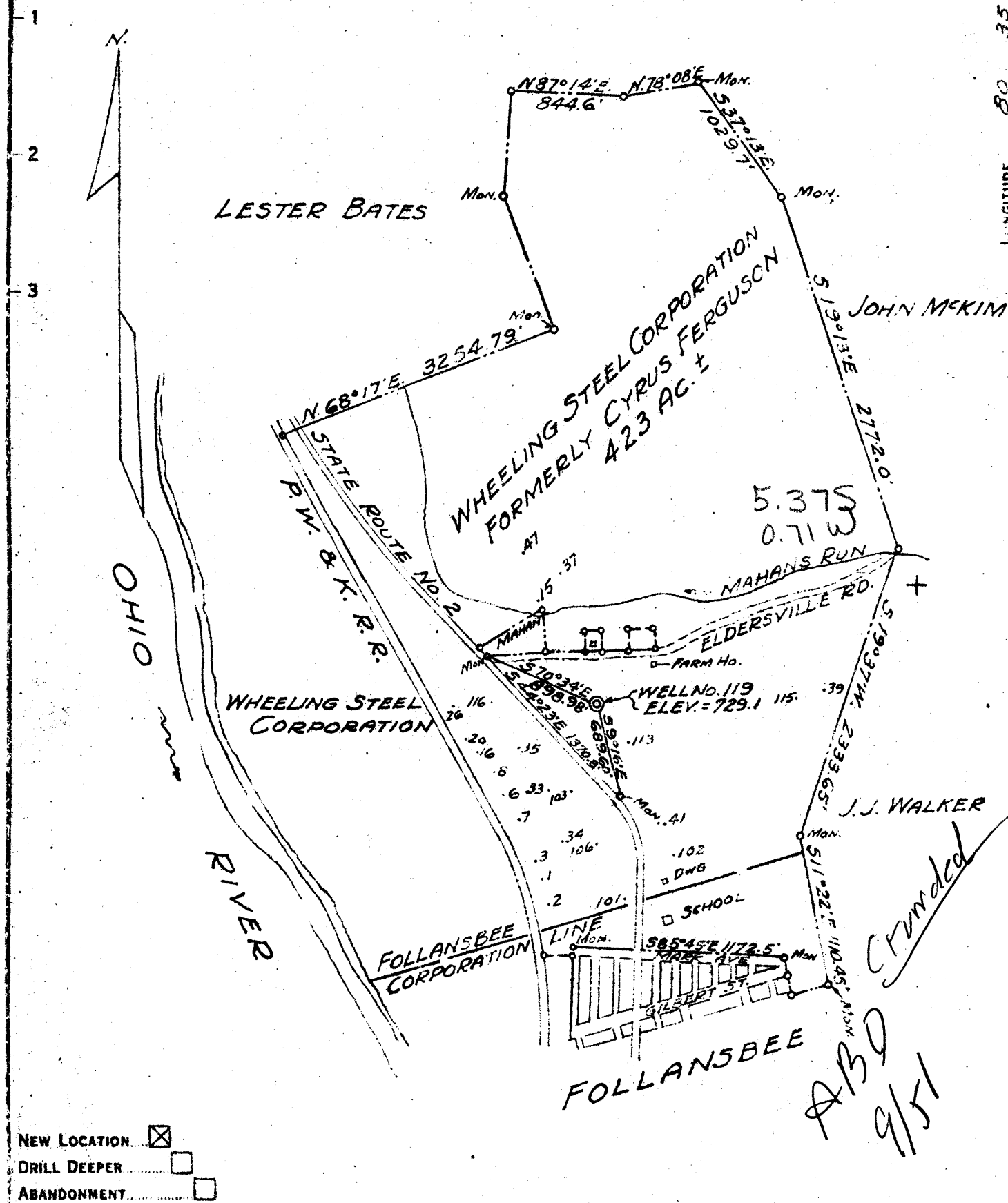
District Cross Creek

WELL LOCATION PLAT

County 009 Permit 51

JAMES ARCHER

LONGITUDE 80 35



- NEW LOCATION
- DRILL DEEPER
- ABANDONMENT

COMPANY WHEELING STEEL CORPORATION
 ADDRESS (GENERAL OFFICE) WHEELING, W. VA.
 FARM WHEELING STEEL CORPORATION (FORMERLY CYRUS FERGUSON)
 TRACT _____ ACRES 423± LEASE NO. _____
 WELL (FARM) NO. 119 SERIAL NO. _____
 ELEVATION (SPIRIT LEVEL) 729.1
 QUADRANGLE STEBENVILLE C
 COUNTY BROOKE DISTRICT CROSS CREEK
 ENGINEER GEORGE K. LANG - C.C. SMITH'S SONS ENGRS. INC.
 ENGINEER'S REGISTRATION NO. 1590
 FILE NO. _____ DRAWING NO. _____
 DATE MAY 9, 1947 SCALE 1"=1000'

STATE OF WEST VIRGINIA
 DEPARTMENT OF MINES
 OIL AND GAS DIVISION
 CHARLESTON

WELL LOCATION MAP
 FILE NO. BRO-51

— DENOTES LOCATION OF WELL ON UNITED STATES TOPOGRAPHIC MAPS SCALE 1 TO 62,500, LATITUDE AND LONGITUDE LINES BEING REPRESENTED BY BORDER LINES AS SHOWN.
 — DENOTES ONE INCH SPACES ON BORDER LINE OF ORIGINAL TRACING.

6-6 11 ✓

WEST VIRGINIA DEPARTMENT OF MINES
OIL & GAS DIVISION
W E L L R E C O R D

Permit No. Bro 51		Oil Well
Steubenville Quad.		CASING & TUBING
Company	Wheeling Steel Corp	
Address	Wheeling, W.Va.	Cond. 15 15
Farm	Corp. Acres 423	13 None
Location	1/2 Mile E. of Ohio River	10 82 82
Well No.	119 Elev. 729.1	8 1/2 300 300
District	Cross Creek Brooke County	6 5/8 964 964
Surface	Wheeling Steel Corp., Wheeling, W.Va.	
Mineral	Same	2 tub. 1338 1338
Commenced	Jan. 22, 1948	
Completed	March 9, 1948	No Packer
Date shot	3-10-48 Depth 1322 to 1337	No Perf. top
	with 30 qts. nitro glycerine 15' Shell	
Open flow	No record	Coal at 249' 48"
Rock Pressure	Very little gas	284' 36"
Oil	5 bbls. with vacuum	
Fresh Water	110'	
Salt Water	565'	

JUL 20 1948

Sand & Gravel Br	S		90		
Mud Bl	S		90	105	
Sand Br	S		105	130	
Shale Dk	M		130	185	
Mud Red	M		185	205	
Mud Wh	M		205	220	
Shale Blk	S		220	249	
Coal Blk	S		249	253	Upper Freeport
Shale Blk	S		253	284	
Coal Blk	S		284	287	Lower Freeport
Shale Blk	M		287	295	
Limestone Wh	H		295	314	
Shale Gr	M		314	356	
Sand Br	M		356	460	
Shale Blk	S		460	565	
Sand Wh	M		565	635	Salt Sand
Slate Dk	M		635	668	
Limestone Wh	H		668	808	Big Lime
Sand Lt	M		808	962	Big Injun
Slate & Shells Dk	M		962	1234	
Sand Wh	H		1234	1262	Weir Sand
Slate Gr	H		1262	1319	
Berea Sand Lt	S		1319	1340	Pay 1322' - 1330'



No showing of either Oil or Gas in any sand above Berea. Very Little Gas in Berea Sand, estimated at 3000' per day.