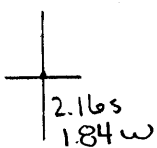


80°20'00"

Latitude

80°30'00"

Longitude



Topo Location

7.5' Loc. _____ 15' Loc. _____
 _____ (calc.) _____

Company Fallicksboro O+G Co

Farm JW Magee #1

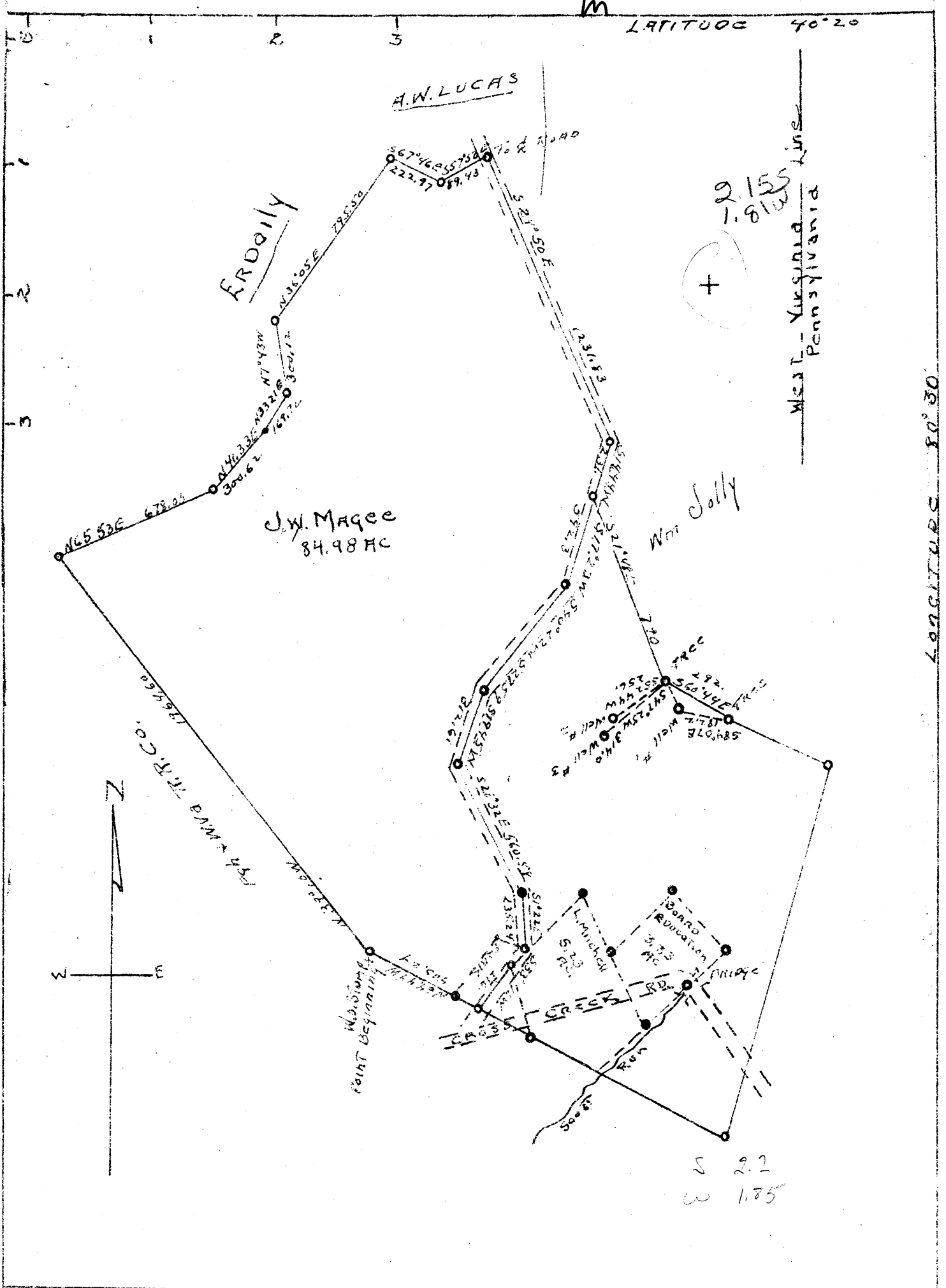
15' Quad _____
(sec.)

7.5' Quad Stuebenville East

District Cross Creek

WELL LOCATION PLAT

County 009 Permit 44



Company - Fallsbee Oil & Gas Co.
 Address - Sheriff's Office Brooke Co
 Farm - J.W. Magee
 Acres - 18
 Wells #1 - #2 - #3
 Elevation - 818.58 - 848.2 - 850.
 Quadrangle - Steubenville SE
 County - Brooke - DIST - Cross Creek
 Engineer - *W.D. Hahn*
 Registration 828
 Scale 1 in = 500 FT
 DATE No. 1-2 - NOV 12/45 No. 3 APR 10/46

State of West Virginia
 Dept. of mines
 Oil and Gas Division

 WELL LOCATION MAP
 FILE No. BRO-44
 + denotes location of well on the
 United States Topographic maps
 Scale 1 in = 62,500, Latitude and
 Longitude lines being represented
 by border lines as shown
 - denotes 1 in spaces on border
 line of ORIGINAL TRACING

WEST VIRGINIA DEPARTMENT OF MINES
OIL & GAS DIVISION
W E L L R E C O R D

Permit No. Bro 44			
Steubenville Quad.			Gas Well
Company	Follansbee Oil & Gas Company		CASING & TUBING
Address	Wellsburg, W.Va.	10	60
Farm	J.W. Magee Acres 18	8½	204
Location		6 5/8	740
Well No.	3 Elev. 850	5 3/15	770
District	Cross Creek Brooke County		
Surface			
Mineral			Coal at 375'
Commenced	May 1, 1946		
Completed	Oct. 24, 1946		

Sand and Gravel	0	60
White Slate	60	69
Red Rock	69	85
Slate (Limey)	85	105
Sand	105	136
Slate	136	210
Sand	210	300
Slate	300	318
Sand	318	345
Hard Lime Shell	345	349
Slate	349	375
Coal	375	380
Slate	380	425
Sand	425	515
Slate	515	670
Salt Sand	670	740
Sand	740	755
Slate	755	770
Top of Injun Sand	770	1035