

40°22'30"

**Latitude**

80°56'08"

**Longitude**

2.395
.40w

**Topo Location**

7.5' Loc. \_\_\_\_\_ 15' Loc. \_\_\_\_\_  
 \_\_\_\_\_ (calc.) \_\_\_\_\_

**Company** Wheeling Steep Corp.

**Farm** Wheeling Steep Corp # 39

**15' Quad** \_\_\_\_\_  
(sec.)

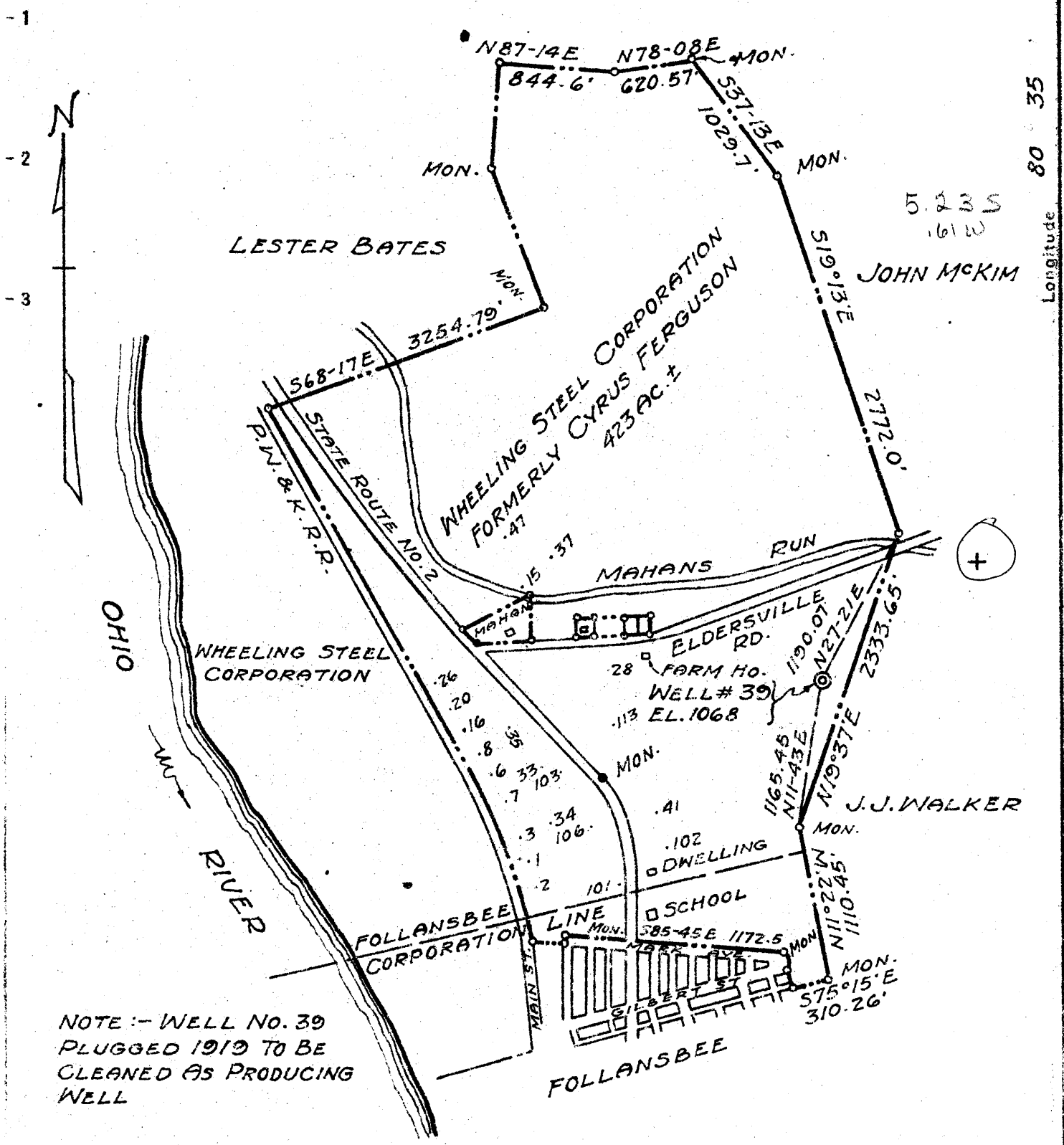
**7.5' Quad** Steubenville East

**District** Cross Creek

**WELL LOCATION PLAT**

**County** 009 **Permit** 39

JAMES ARCHER



NOTE :- WELL NO. 39  
PLUGGED 1919 TO BE  
CLEANED AS PRODUCING  
WELL

- New Location
- Drill Deeper
- Abandonment

Company	WHEELING STEEL CORPORATION	
Address	(GENERAL OFFICE) WHEELING, W.VA.	
Farm	WHEELING STEEL CORPORATION FORMERLY CYRUS FERGUSON	
Tract	Acres 423±	Lease No.
Well (Farm) No.	39	Serial No.
Elevation (Spirit Level)	1068	
Quadrangle	STEBENVILLE	
County	BROOKE	District CROSS CREEK
Engineer	SIDNEY C. SMITH - C.C. SMITH'S SONS	
Engineer's Registration No.	240	
File No.	Drawing No.	
Date	MAY 31, 1945	Scale 1" = 1000'

STATE OF WEST VIRGINIA  
DEPARTMENT OF MINES  
OIL AND GAS DIVISION  
CHARLESTON

WELL LOCATION MAP  
FILE NO. BRO-39

+ Denotes location of well on United States Topographic Maps, scale 1 to 62,500, latitude and longitude lines being represented by border lines as shown.

- Denotes one inch spaces on border line of original tracing

