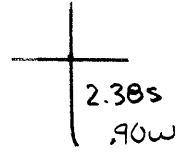


Latitude

Longitude



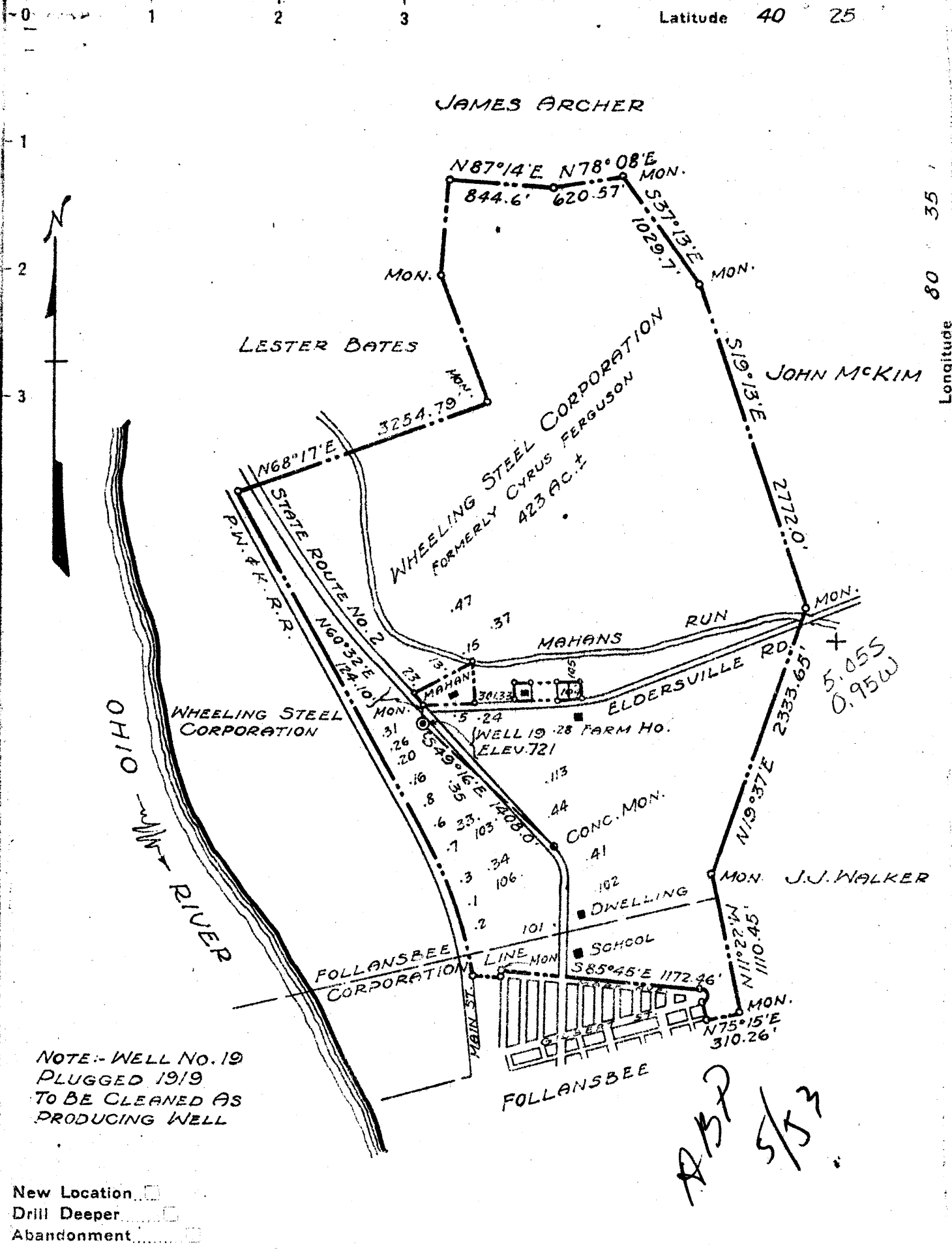
Topo Location

7.5' Loc. _____ 15' Loc. _____
 _____ (calc.) _____

Company Wheeling Steel Corp.
 Farm Wheeling Steel Corp # 19
 15' Quad _____
 (sec.)
 7.5' Quad Steubenville East
 District Cross Creek

WELL LOCATION PLAT

County 009 Permit 36



NOTE - WELL NO. 19
PLUGGED 1919
TO BE CLEARED AS
PRODUCING WELL

- New Location
- Drill Deeper
- Abandonment

ABP
5/53

Company WHEELING STEEL CORPORATION
 Address (GENERAL OFFICE) WHEELING, W. VA.
 Farm WHEELING STEEL CORPORATION (FORMERLY CYRUS FERGUSON)
 Tract _____ Acres 423± Lease No. _____
 Well (Farm) No. 19 Serial No. _____
 Elevation (Spirit Level) 721
 Quadrangle STEBENVILLE
 County BROOKE District CROSS CREEK
 Engineer SIDNEY C. SMITH - C. G. SMITH'S SONS
 Engineer's Registration No. 240
 File No. _____ Drawing No. _____
 Date OCT. 6, 1944 Scale 1" = 1000'

STATE OF WEST VIRGINIA
DEPARTMENT OF MINES
OIL AND GAS DIVISION
CHARLESTON

WELL LOCATION MAP
FILE NO. BRD-36

+ Denotes location of well on United States Topographic Maps, scale 1 to 62,500, latitude and longitude lines being represented by border lines as shown.
 - Denotes one inch spaces on border line of original tracing

WEST VIRGINIA DEPARTMENT OF MINES
OIL & GAS DIVISION
W E L L R E C O R D

Permit No. Bro 36		Oil Well
Steubenville Quad.		CASING & TUBING
Company	Wheeling Steel Corp.	
Address	Wheeling, W.Va.	10 . 78 78
Farm	Corporation Acres 42 3	8 1/2 290 290
Location	1/2 mile East of Ohio River	6 5/8 986 986
Well No.	19 Elev. 721'	2 1334
District	Cross Creek Brook County	
Surface	Wheeling Steel Corporation	Packer
	Wheeling, W.Va.	None
Mineral	Same	
Commenced	Nov. 15, 1944	Casing not cemented
Completed	March 19, 1945	
Date shot	Feb. 20, 1945	Depth 1315-1330 No coal recorded
Open flow	No record	
Volume	5000 C.F. gas per day	
Rock Pressure	No record	
Oil	12	
Water	No record	

This was an old well drilled in 1908 and plugged in 1919. Same has now been cleaned out, recased and put to pumping with an average daily oil production, based on a 5 day test of 6 barrels. No water is present.

Production is from the Berea sand located at 1311' to 1328'.

Total depth of well is 1337'.

Berea sand in this well is extremely hard and little reservoir was gained through shooting and cleaning out.