

Longitude 80° 35'

Note: Well No 45 plugged 1920 to be cleaned as producing well

New Location
 Drill Deeper
 Abandonment

- H-27-71 issued 8/22/74

Asst. Eng. E. B. Herriott Brook Mar Oil Co.
 Company WHEELING STEEL CORPORATION
 View in Brook Mar Sisterville, W. Va. 26195 36003
 Address (General Office) Wheeling, W. Va.
 Farm Wheeling Steel Corporation { Formerly Cyrus / Ferguson }
 Tract _____ Acres 423 Lease No. _____
 Well (Farm) No. 45 Serial No. _____
 Elevation (Spirit Level) 775
 Quadrangle Stuebenville C
 County Brooke District Cross Creek
 Engineer Eugene M. Smith - C.C. Smith's sons
 Engineer's Registration No. 290
 File No. _____ Drawing No. _____
 Date Apr. 9, 1942 Scale 1" = 1000'

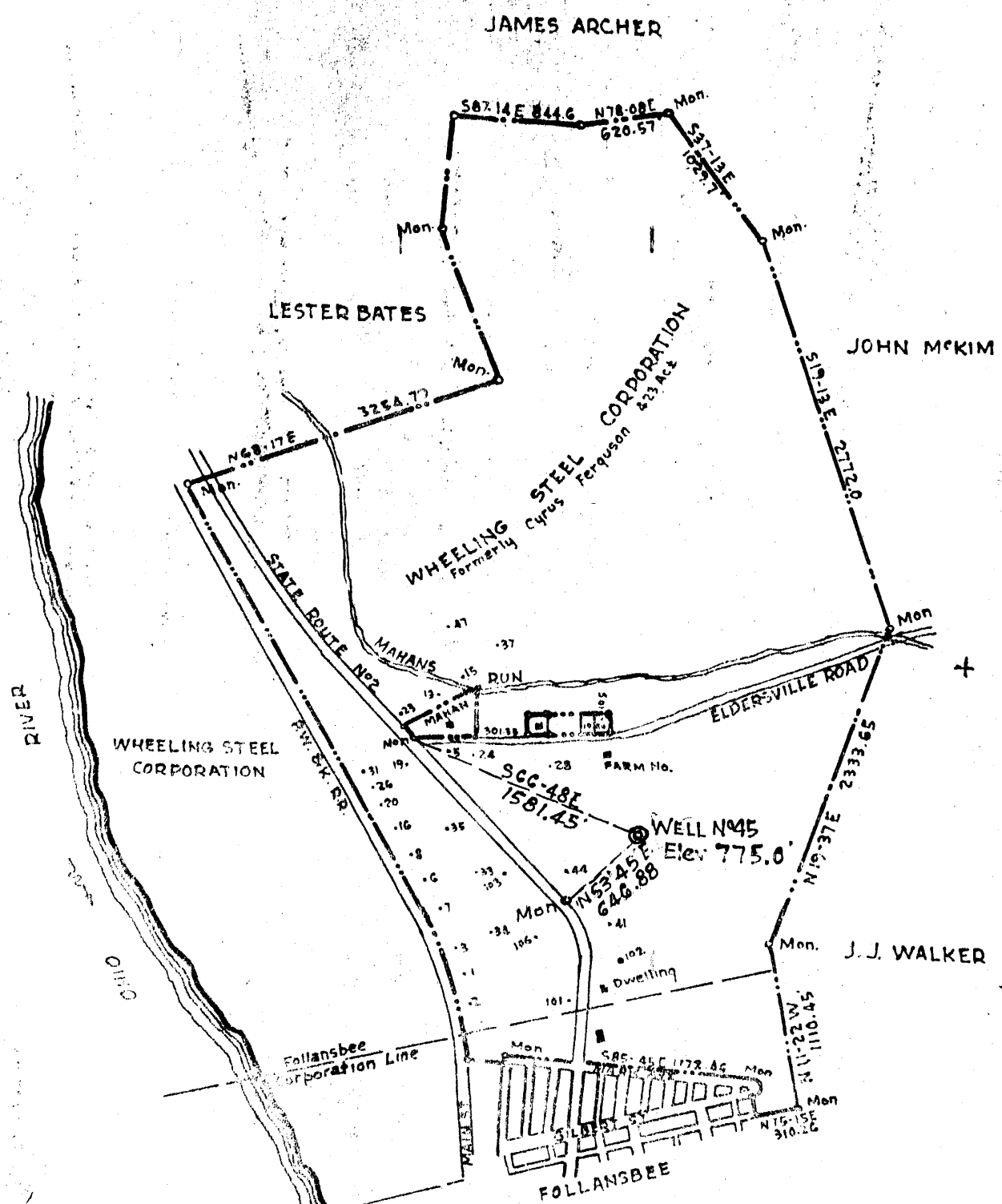
STATE OF WEST VIRGINIA
 DEPARTMENT OF MINES
 OIL AND GAS DIVISION
 CHARLESTON

WELL LOCATION MAP
 FILE NO. BRO-27(P-C)

+ Denotes location of well on United States Topographic Maps, scale 1 to 62,500. Latitude and longitude lines being represented by border lines as shown.

- Denotes one inch spaces on border line of original tracing.

47-009



Note: Well No 45 plugged 1920 to be cleaned as producing Well

New Location
 Drill Deeper
 Abandonment - 11-29-71

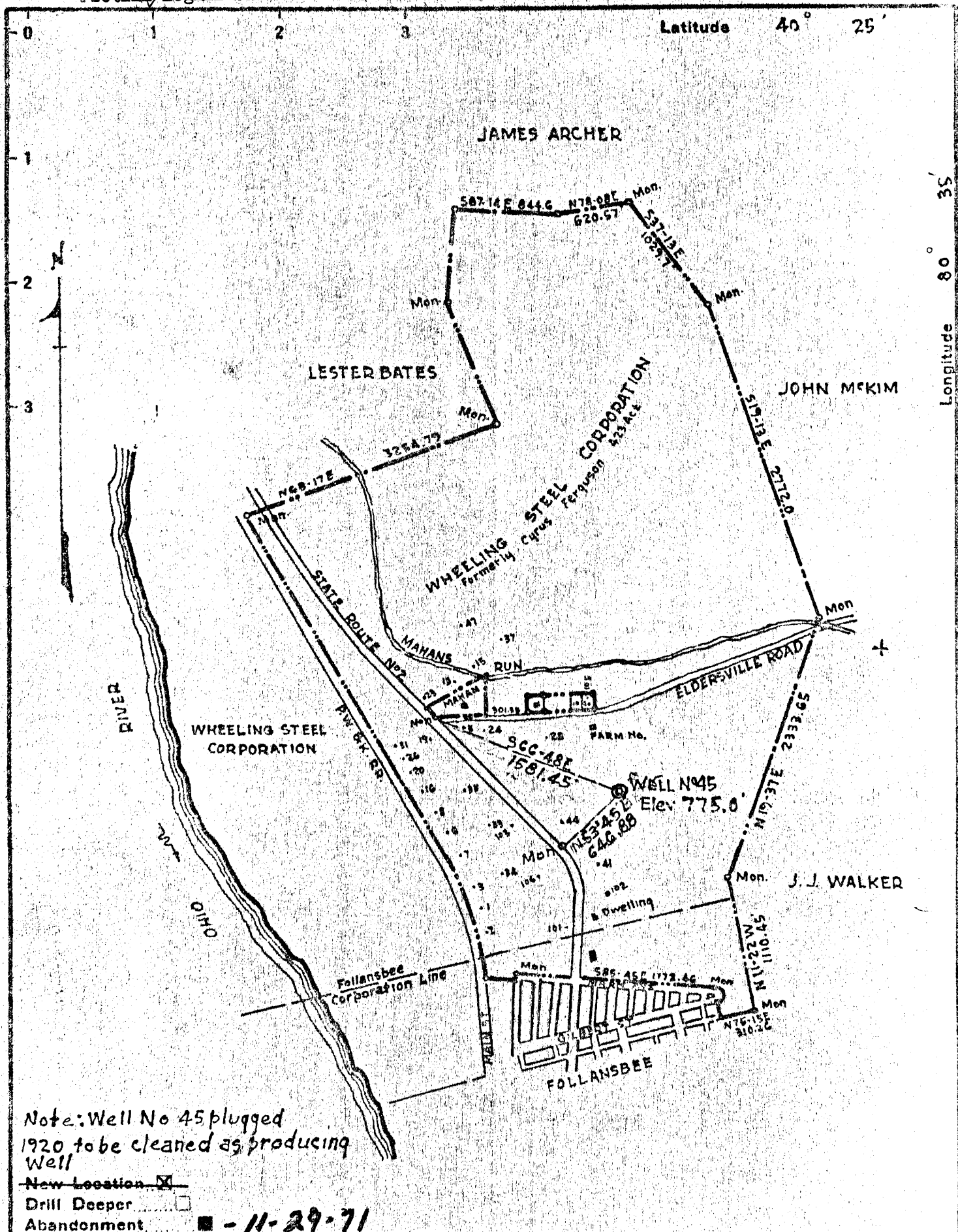
E. E. Henthorn
 Company: WHEELING STEEL CORPORATION
 Address: Box 42, Sistersville, W. Va., 26175
 (General Office) Wheeling, W. Va.
 Firm: Wheeling Steel Corporation { Formerly Cyrus Ferguson }
 Tract: _____ Acres 423 Lease No. _____
 Well (Farm) No. 45 Serial No. _____
 Elevation (Spot Elevation) 775
 Quadrangle: Sistersville a
 County: Boone District: Cross Creek
 Engineer: Eugene M. Smith - C.C. Smith's Sons
 Engineer's Registration No. 290
 File No. _____ Drawing No. _____
 Date: Apr. 9, 1942 Scale: 1" = 1000'

STATE OF WEST VIRGINIA
 DEPARTMENT OF MINES
 OIL AND GAS DIVISION
 CHARLESTON

WELL LOCATION MAP
 FILE NO. BRO-27-P
Plugging cancelled 5-16-72

+ Denotes location of well on United States Topographic Maps, scale 1 to 62,500, latitude and longitude lines being represented by border lines as shown.

- Denotes one inch spaces on border line of original tracing.



Note: Well No 45 plugged 1920 to be cleaned as producing Well

New Location
 Drill Deeper
 Abandonment - 11-29-71

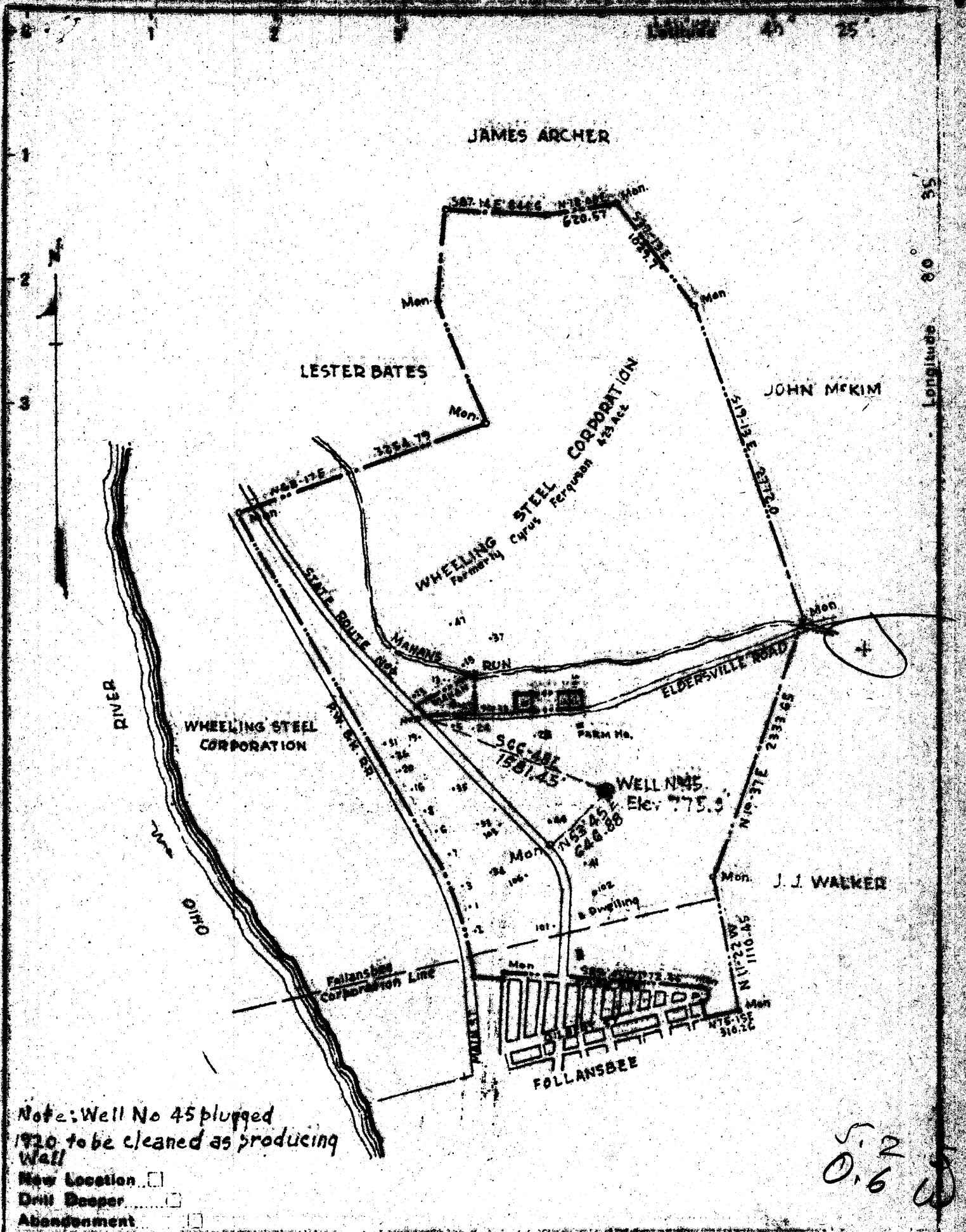
E. E. Henthorn
 Company WHEELING STEEL CORPORATION
 Address Box 42, Sistersville, W. Va., 26175
 (General Office) Wheeling, W. Va.
 Farm Wheeling Steel Corporation { Formerly Cyrus Fergusson }
 Tract Acres 423 Lease No.
 Well (Farm) No. 45 Serial No.
 Elevation (Spirit Level) 775
 Quadrangle Stuebenville C
 County Brooke District Cross Creek
 Engineer Eugene M. Smith - C.C. Smith's sons
 Engineer's Registration No. 290
 File No. Drawing No.
 Date Apr. 9, 1942 Scale 1" = 1000'

STATE OF WEST VIRGINIA
 DEPARTMENT OF MINES
 OIL AND GAS DIVISION
 CHARLESTON

WELL LOCATION MAP
 FILE NO. BRO-27-P

+ Denotes location of well on United States Topographic Maps, scale 1 to 62,500, latitude and longitude lines being represented by border lines as shown.

- Denotes one inch spaces on border line of original tracing.



Note: Well No 45 plugged
1920 to be cleaned as producing
Well

New Location
Drill Deeper
Abandonment

5.2
0.6

Company	WHEELING STEEL CORPORATION		
Address	(General Office) Wheeling, W. Va.		
Farm	Wheeling Steel Corporation	Formerly	Cyrus Ferguson
Tract	Acres 425	Lease No.	
Well (Farm) No.	45	Serial No.	
Elevation (Spirit Level)	775		
Quadrangle	Staubenville		
County	Brooke	District	Cross Creek
Engineer	Eugene M. Smith - C.C. Smith's Sons		
Engineer's Registration No.	290		
File No.	Drawing No.		
Date	Apr. 9, 1922		

STATE OF WEST VIRGINIA
DEPARTMENT OF MINES
OIL AND GAS DIVISION
CHARLESTON

WELL LOCATION MAP
FILE NO. BR-27

+ Denotes location of well on United States
Topographic Maps, scale 1 to 62,500, lat-
itude and longitude lines being represented
by border lines as shown.

- Denotes acre limit areas on border line
of original leasing.