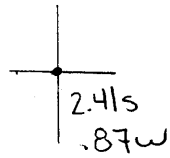


Latitude

Longitude



Topo Location

7.5' Loc. \_\_\_\_\_ 15' Loc. \_\_\_\_\_  
 \_\_\_\_\_ (calc.) \_\_\_\_\_

Company Wheeling Steel Corp

Farm Wheeling Steel Corp #111

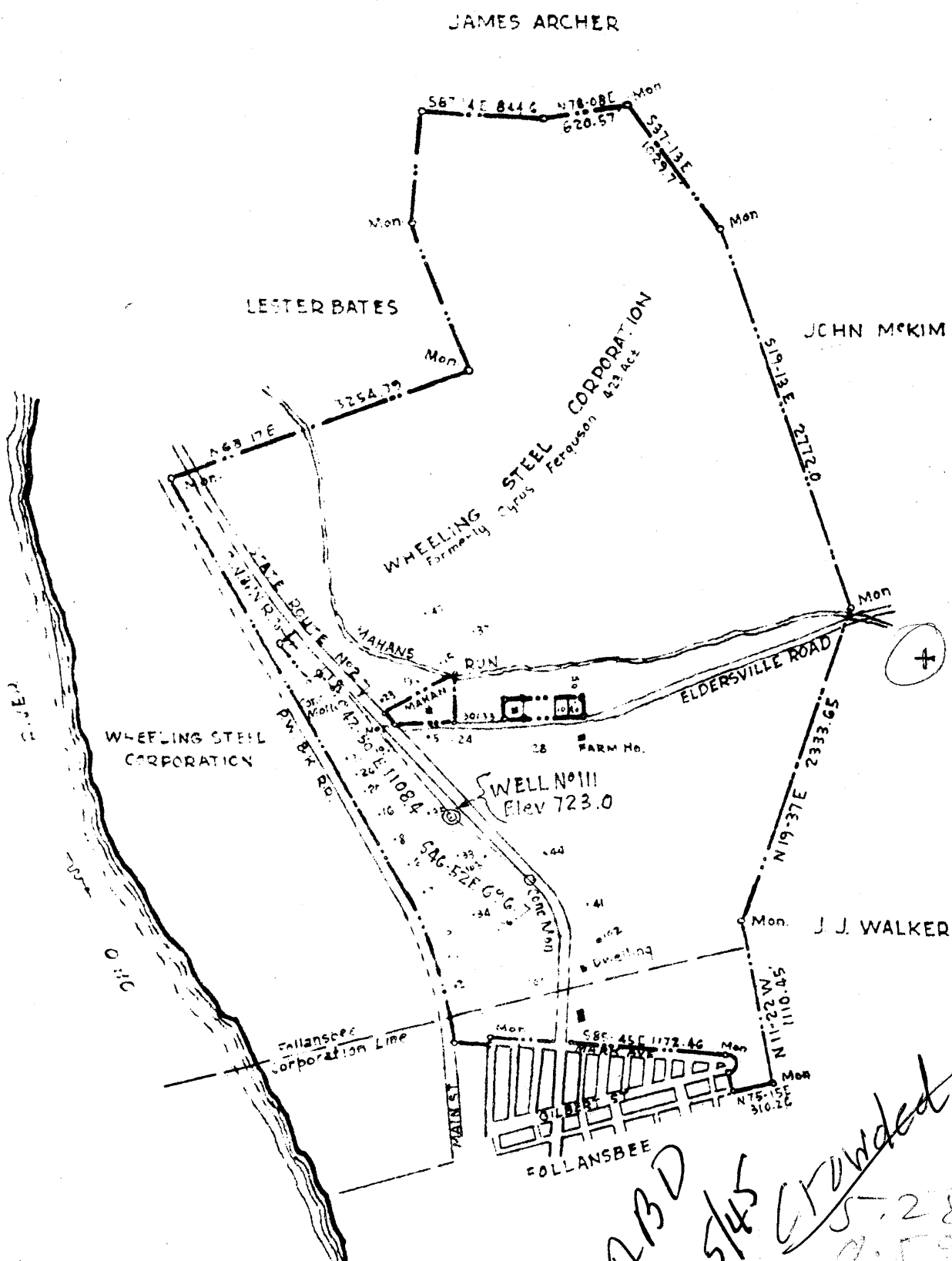
15' Quad \_\_\_\_\_  
(sec.)

7.5' Quad Steubenville East

District Cross Creek

WELL LOCATION PLAT

County 009 Permit 26



*ABD 5/45 Crowded 5-28 0.59 H*

New Location X  
 Drill Deeper  
 Abandonment

Company	WHEELING STEEL CORPORATION
Address	(General Office) Wheeling, W. Va
Farm	Wheeling Steel Corporation { Formerly Cyrus Ferguson }
Tract	Acres 423 Lease No.
Well (Farm) No.	III Serial No.
Elevation (Spirit Level)	723.0'
Quadrangle	Steubenville
County	Brooke District Cross Creek
Engineer	Eugene M. Smith - C.C. Smith's Sons
Engineer's Registration No.	290
File No.	Drawing No.
Date	Dec 29, 1941 Scale 1" = 1000'

STATE OF WEST VIRGINIA  
 DEPARTMENT OF MINES  
 OIL AND GAS DIVISION  
 CHARLESTON

WELL LOCATION MAP  
 FILE NO. Bro-26

+ Denotes location of well on United States Topographic Maps, scale 1 to 62,500, latitude and longitude lines being represented by border lines as shown.  
 - Denotes one inch spaces on border line of original tracing.

WEST VIRGINIA DEPARTMENT OF MINES  
OIL & GAS DIVISION  
W E L L R E C O R D

Permit No. Bro-26

Company  
Address  
Farm  
Location  
Well No  
District  
Surface  
Mineral  
Commenced  
Completed  
Shot  
Flow  
Oil  
Fresh Water  
Salt Water

Wheeling Steel Corp.  
Wheeling, W.Va.  
Corpe. Acres 423  
One-half mile East of Ohio River  
111 Elev. 723'  
Cross Creek Brook County  
Wheeling Steel Corp. Wheeling, W.Va.  
Same  
Jan. 21, 1942  
Feb. 19, 1942  
Feb. 20, 1942  
No Record  
Five bbls., 1st 24 hrs.  
100\*  
340\*

Oil Well  
CASING & TUBING  
10 70 70  
8 180 180  
6 5/8 970 970  
2 1336 1336  
Casing not cemented  
Coal at 259'

Depth 1323'  
1339

Sand & Gravel		Br		70	
Mud	Wh	S	70	100	
Sand	Gr	S	100	125	
Slate	Dk	M	125	230	
Sand	Gr	M	230	250	
Coal	Dk	M	250	255	
Clay	Wh	S	255	280	Fire Clay
Slate	Dk	M	280	340	
Sand	Wh	H	340	450	Gas 435
Slate	Dk	M	450	505	
Sand	Lt	M	505	525	
Slate	Dk	M	525	560	
Sand	Wh	M	560	625	Salt Sand
Slate	Dk	M	625	665	
Limestone	Lt	H	665	815	Big Limo
Sand	Gr	H	815	960	Big Injun
Slate & Shells	Dk	M	960	1230	
Sand	Lt	M	1230	1255	Stray
Slate	Dk	S	1255	1312	
Sand	Lt	S	1312	1336	Oil (Dorea)
Shale	Dk	M	1336	1339	T.D.