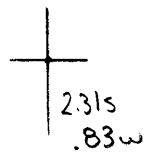


Latitude

Longitude



Topo Location

7.5' Loc. \_\_\_\_\_ 15' Loc. \_\_\_\_\_  
 \_\_\_\_\_ (calc.) \_\_\_\_\_

Company Austin Saunders

Farm Maham Hrs #1

15' Quad \_\_\_\_\_  
(sec.)

7.5' Quad Stuebenville East

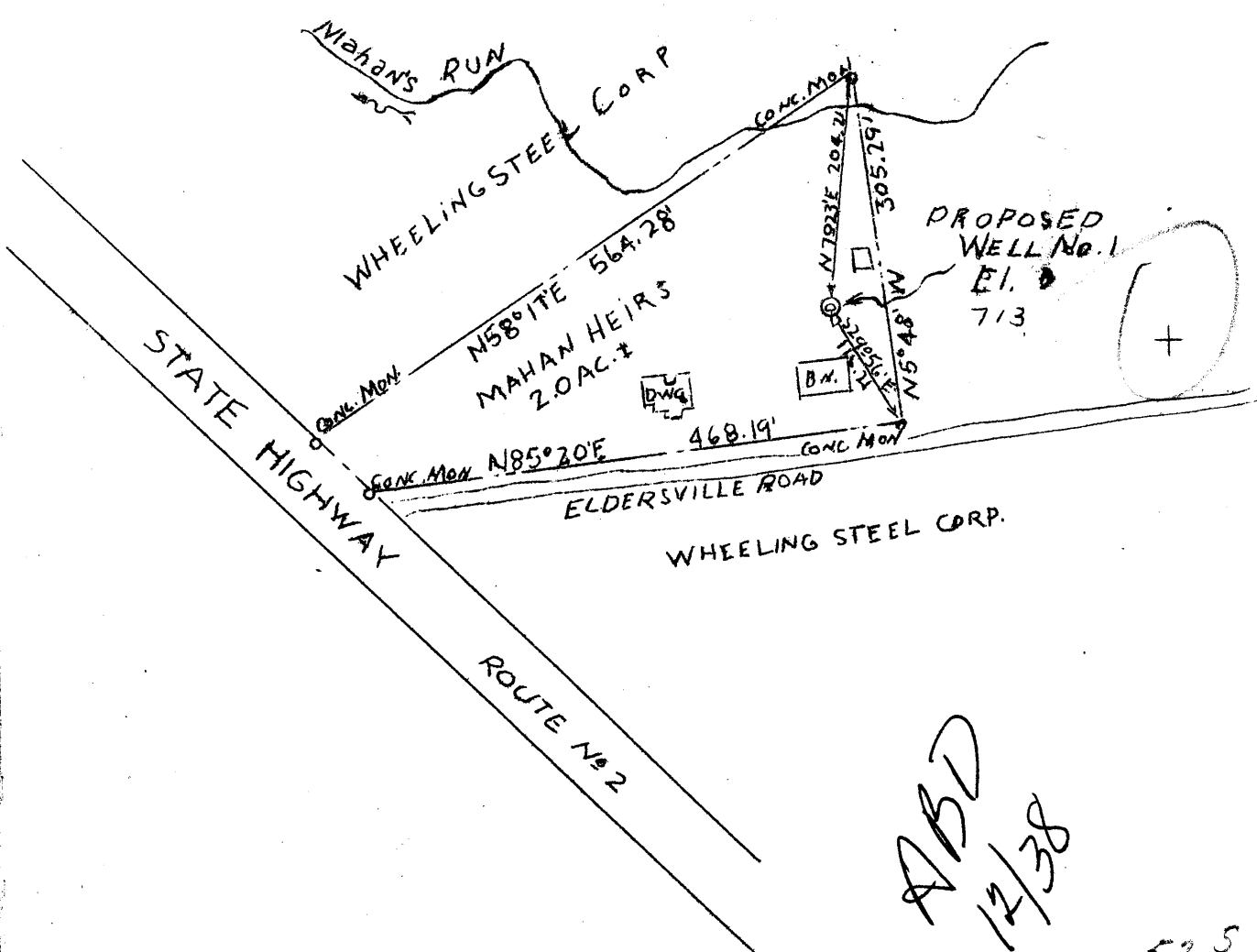
District Cross Creek

WELL LOCATION PLAT

County 009 Permit 014

Latitude 40° 25'

Longitude 80° 35'



Company	Austin Saunders
Address	Steubenville, Ohio, R2
Farm	Mahan Heirs
Acres	2.0
Well No.	One
Elevation (SP)	713'
Quadrangle	Steubenville C
County	Brooke
District	Cross Creek
Engineer	Sidney C. Smith
Eng. Reg. No.	240
Date	August 4, 1938
Scale	1" = 150

STATE OF WEST VIRGINIA  
 Department of Mines  
 OIL & GAS DIVISION  
 Charleston

WELL LOCATION MAP  
 File No. BR-14

x Denotes location of well on U. S. Topographic Maps, scale 1 to 62,500, latitude and longitude lines being represented by border lines as shown.

- Denotes one inch spaces on border line of original tracing.

WEST VIRGINIA DEPARTMENT OF MINES

OIL & GAS DIVISION

WELL RECORD

Permit No. Bro-14

Steubenville Quad.

Oil Well

CASING & TUBING

Company	Austin Sanders	10	36	36
Address	Steubenville, O. (R.D.#2)	8-1/4	300	300
Farm	Mahan ACRES 3	6-5/8	950	950
Location	Mahan's Run	No Packer		
Well No.	One ELEV. 781	Not cemented		
District	Cross Creek County Brooke	Coal Encountered:		
Surface	Mahan's Heirs, Follansbee, W. Va.	Feet	inches	
Mineral	Wheeling Steel Comp., Wheeling, W.Va.	230	-	
Drilling commenced	Sept. 22, 1938	272	-	
Drilling completed	Oct. 13, 1938			
Date shot	Oct. 14, 1938 - Depth 1319			
Open Flow	No Record			
Volume	No Record			
Rock Pressure	No Record			
Oil	One bbl. 1st 24 hrs.			
Fresh Water	No Record			
Salt Water	No Record			

Formation Color <sup>HAY</sup> 5 TOP Base Result Formation Color <sup>HAY</sup> 5 TOP Base Result

Formation	Color	<sup>HAY</sup> 5	TOP	Base	Result
Gravel	gray	s		25	
Slate	white	s	25	36	
Lime	white	h	36	50	
Red Rock	red	s	50	60	
Lime	white	h	60	120	
Sand	brown	h	120	140	
Slate&Shell	s blk	s	140	230	
Coal	black	s	230	235	
Slate	black	s	235	272	
Coal	black	s	272	277	
Lime	white	s	277	300	
Shale	gray	s	300	400	
Sand	dark	s	400	450	
Slate	black	s	450	490	
Sand	white	med	490	500	
Slate	black	s	500	550	
Salt Sand	white	h	550	595	water
Slate&Shell	s drk	med	595	640	
Big Injun	white	h	640	950	(6-5/8 casing)
Slate&Shell	s drk	med	950	1220	
Stray Sand	gray	h	1220	1240	
Slate	black	s	1240	1305	
Berea Sand	dark	h	1305	1309	
Oil pay Sand	drk	h	1309	1316	

(Shot with 35 qts. October 14, 1938)