

40° 22' 30"

Latitude

80° 35' 00"

Longitude



2.33s
.19w

Topo Location

7.5' Loc. _____ 15' Loc. _____
 (calc.) _____

Company RJ Brandon

Farm John W Walker #1

15' Quad _____
(sec.)

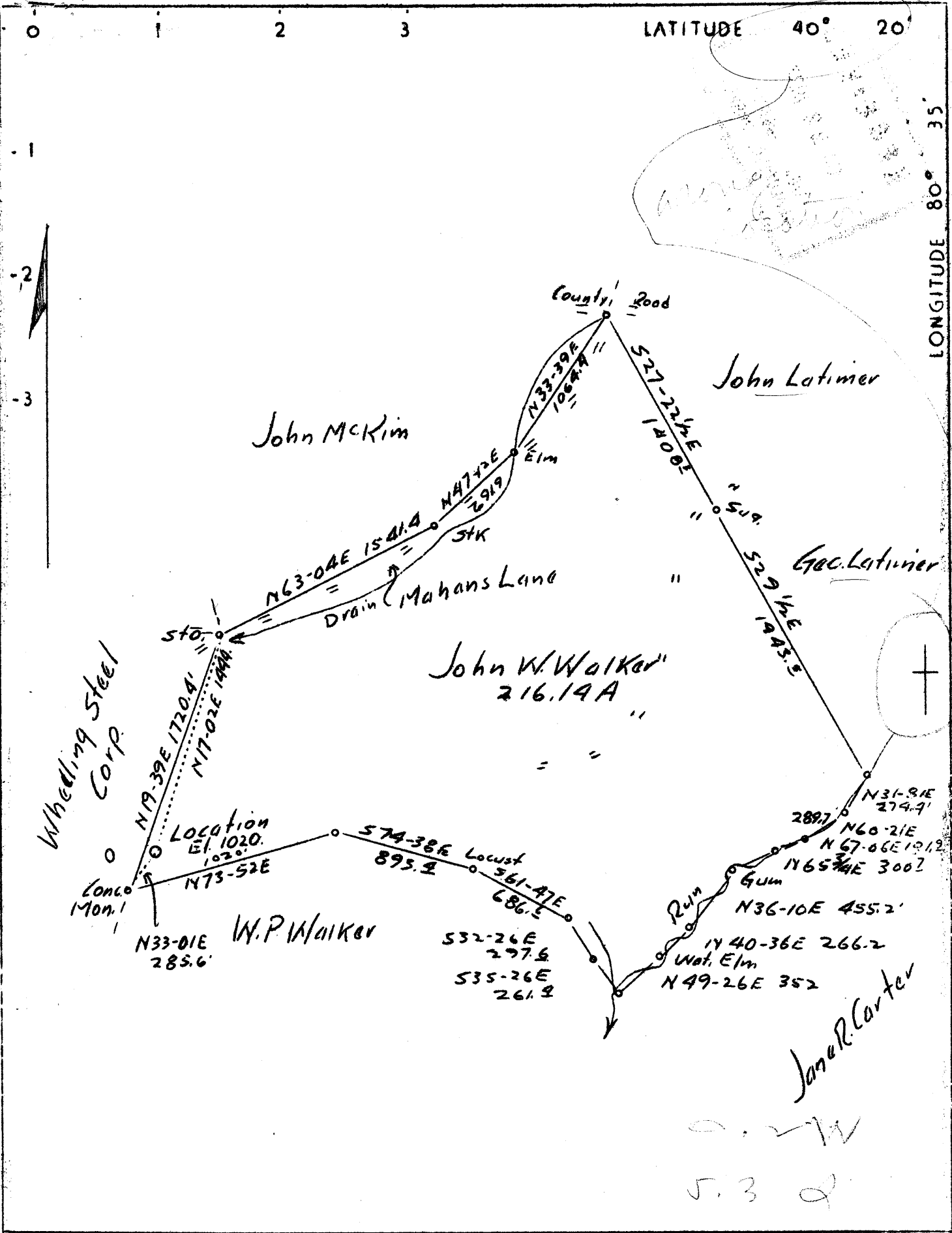
7.5' Quad Stubenville East

District Cross Creek

WELL LOCATION PLAT

County 009 Permit 12

M



Company	R.J. Branden
Address	Chester, W.Va.
Farm	John W. Walker
Tract	Acres 216.14 Lease No. 1
Well (Farm) No.	1 Serial No.
Quadrangle	Steubenville <u>50</u>
County	Brooke
District	Cross Creek
Engineer	Eugene M. Smith (C.C. Smith's Sons)
Engineer's Registration No.	390
File No.	Drawing No.
Date	June 8, 1937 Scale 1"-800'

STATE OF WEST VIRGINIA
 Department of Mines
 OIL AND GAS DIVISION
 CHARLESTON

WELL LOCATION MAP
 File No. BRO-12

+ Denotes location of well on United States Topographic Maps, scale 1 to 62,500, latitude and longitude lines being represented by border lines as shown.

— Denotes one inch spaces on border line of original tracing.

