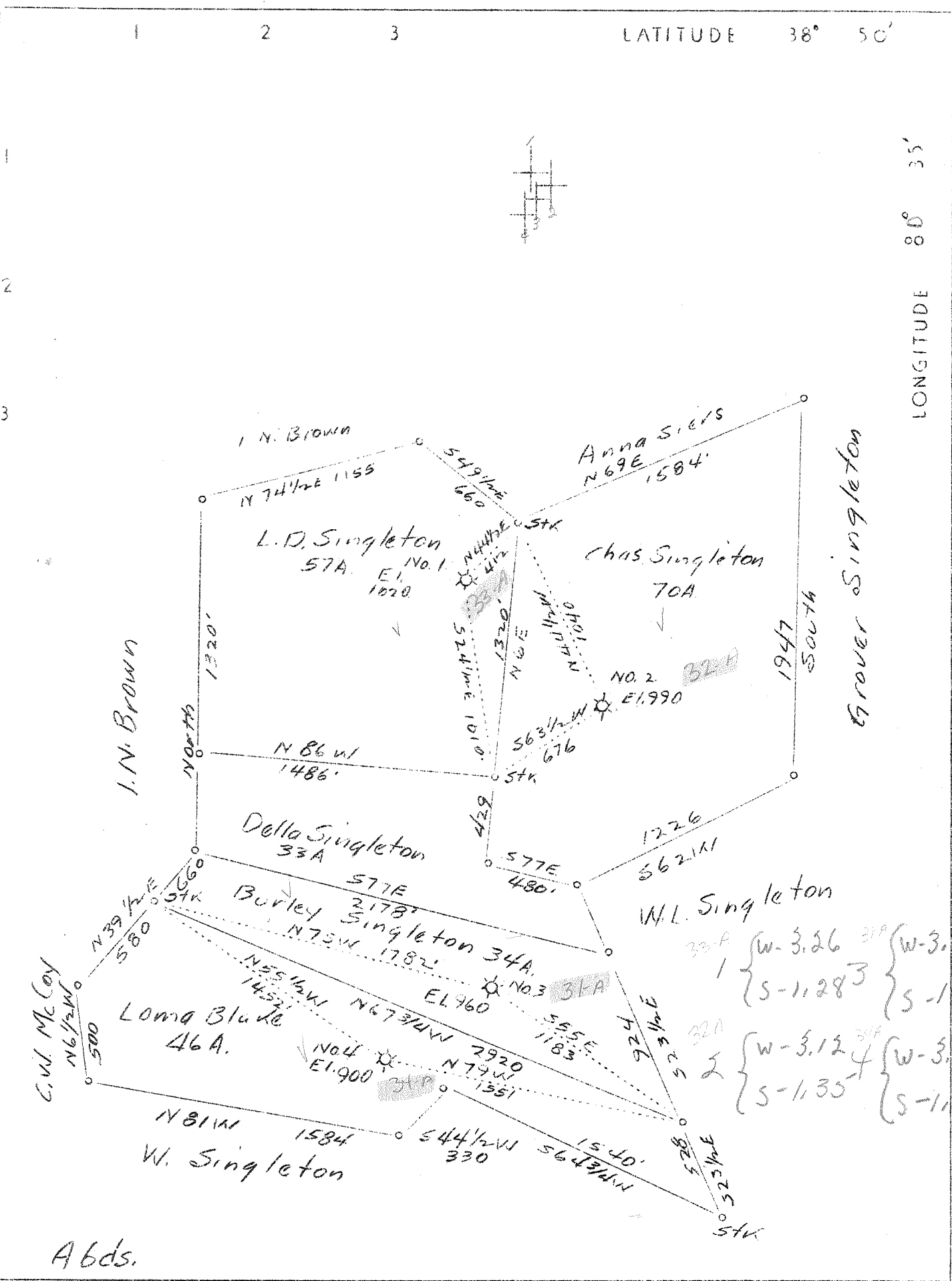


M

LATITUDE 38° 50'

LONGITUDE 80° 35'



Company W. S. Perry  
 Address Charleston, W. Va.  
 Farm Singleton, L. C. Chas.,  
 & Burley & Loma Blake  
 Tracts 4 tracts  
 Acres 207.0  
 Well (Farm) No. 1, 2, 3 and 4  
 Elevation (SL) Bar. - See plat  
 Quadrangle Burnsville  
 County Braxton  
 District Salt Lick  
 Engineer C. E. Krebs  
 Eng. Reg. No. 9  
 File No. 11-649  
 Date Oct. 10, 1939  
 Scale 1" = 660'

STATE OF WEST VIRGINIA  
 Department of Mines  
 OIL & GAS DIVISION  
 Charleston

WELL LOCATION MAP  
 File No. BRAX-32A-34A  
 INCLUSIVE

x Denotes location of well on U. S. Topo-  
 graphic Maps, scale 1 to 62,500, latitude  
 and longitude lines being represented by  
 border lines as shown.  
 - Denotes one inch spaces on border line  
 of original tracing.