

LATITUDE 38 55

8035

LONGITUDE

→ 7.5' loc.
K12 12/10/43

7.5 OGIS topo location

7.5' loc	<u>2.545</u>	15' loc	<u>2.545</u>
	<u>1.62W</u>	(calc.)	<u>1.62W</u>

Company _____

Farm _____

Quad Peterson / Burnsville C

County _____

District Salt Lick

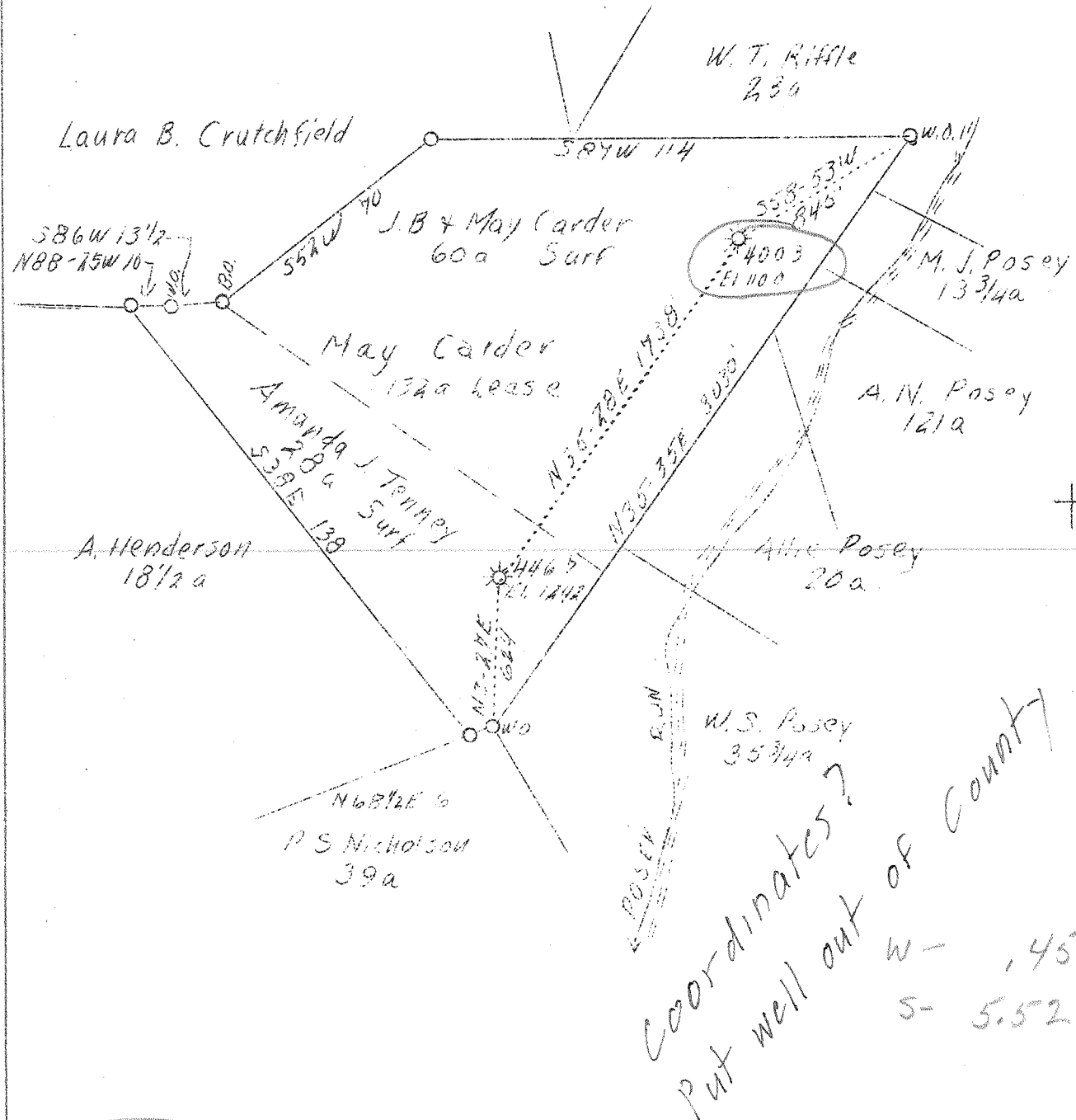
WELL LOCATION MAP

File No. Box 30028

M

LATITUDE 39° 00'

LONGITUDE 80° 35'



4003

F.B. 640 P3 540W7 5484

Company	Hope Natural Gas Co.
Address	Clarksburg, W. Va.
Farm	May Carder
Acres	132
Lease No.	24929
Well (Farm) No.	-
Serial No.	4003-4467
Elevation (SL)	Shown above
Quadrangle	Burnsville Peterson
County	Braxton
District	Salt Lick
Engineer	W. M. Bowers
Eng. Reg. No.	900
Date	Jan. 17, 1939
Scale	L" - 40 poles

STATE OF WEST VIRGINIA
 Department of Mines
 OIL & GAS DIVISION
 Charleston

WELL LOCATION MAP

File No. Brax-78-17

x Denotes location of well on U. S. Topographic Maps, scale 1 to 62,500, latitude and longitude lines being represented by border lines as shown.

- Denotes one inch spaces on border line of original tracing.