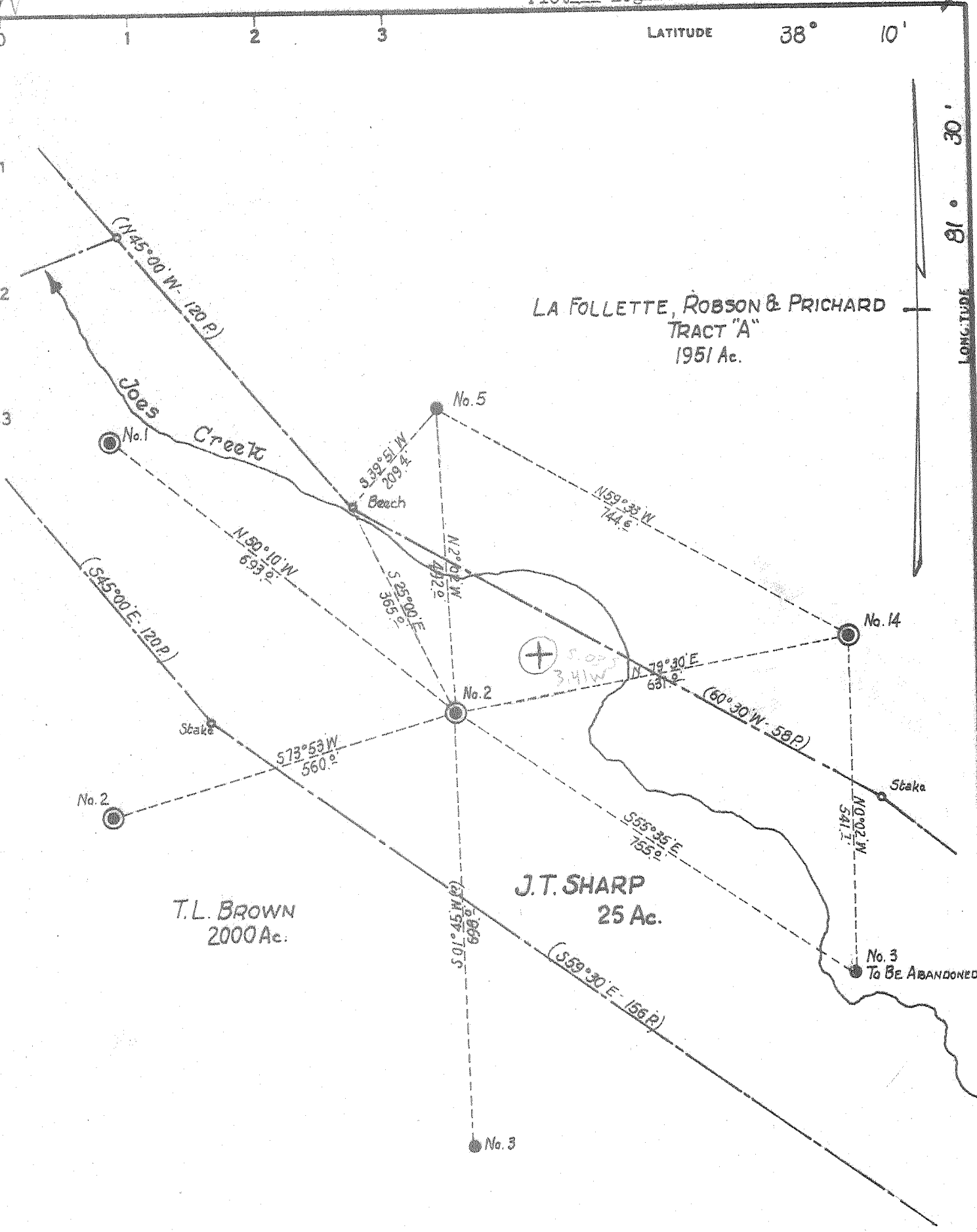


LATITUDE 38° 10'

LONGITUDE 81° 30'



CERTIFICATE

"I, the undersigned, hereby certify that this map is correct to the best of my knowledge and belief and shows all the information required by paragraph 4 of the rules and regulations of the oil and gas section of the mining laws of West Virginia."
 Minimum degree of accuracy is one part in 200
 Signed T. S. Blumley RPS

- NEW LOCATION
- RECONDITION
- DRILL DEEPER
- ABANDONMENT

COMPANY	BLUE CREEK GAS COMPANY		
ADDRESS	1706 PENNA. AVE, CHARLESTON, W.VA.		
FARM	J.T. SHARP		
MAP	ACRES	LEASE NO.	
	25		
WELL (FARM) NO.	SERIAL NO.		
3			
ELEVATION (SPIRIT LEVEL)	915.0'		
QUADRANGLE	PEYTONA S.E.		
COUNTY	DISTRICT		
BOONE	SHERMAN		
POINT OF PROVEN ELEVATION	U.S.G.S. Datum: Road Intersection 500 feet East of Wall No. 3 (Elev. 920. See Sylvester I. 2400 Topo Sheet)		
FILE NO.	DRAWING NO.		
DATE	NOV. 6, 1967.	SCALE	1" = 200'

STATE OF WEST VIRGINIA
DEPARTMENT OF MINES
OIL AND GAS DIVISION
CHARLESTON
WELL LOCATION MAP
FILE NO. Boone-436-ABND
+ DENOTES LOCATION OF WELL ON UNITED STATES TOPOGRAPHIC MAPS SCALE 1" = 62 500' LATITUDE AND LONGITUDE LINES BEING REPRESENTED BY BORDER LINES AS SHOWN
- DENOTES ONE INCH SPACES ON BORDER LINE OF ORIGINAL TRACING