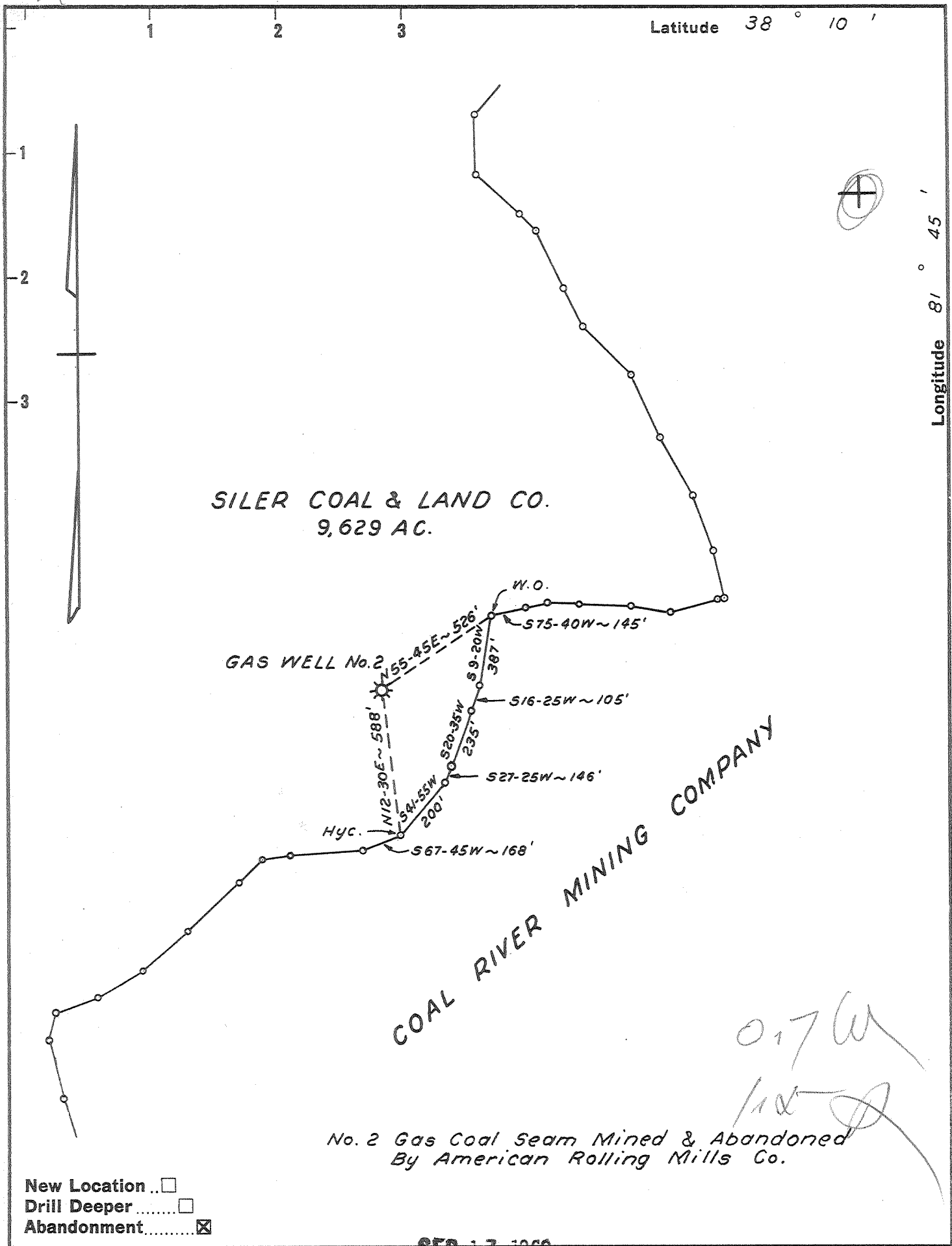


AM

✓



COAL RIVER MINING COMPANY

0.17 W
100

No. 2 Gas Coal Seam Mined & Abandoned
By American Rolling Mills Co.

- New Location
- Drill Deeper
- Abandonment

SEP 17 1962

Company	UNITED CARBON CO.		
Address	CHARLESTON, W. VA.		
Farm	SILER COAL & LAND CO.		
Tract	Acres	9,629	No. 376
Well (Farm) No.	2	Serial No.	990
Elevation (Spirit Level)	1318.3-TOP 10 CSG		
Quadrangle	MADISON		
County	BOONE	District	PEYTONA
Engineer	John H. Burnett		
Engineer's Registration No.	1442		
File No.	6D	Drawing No.	
Date	JULY 23-1962		
Scale	1" = 500		

STATE OF WEST VIRGINIA
DEPARTMENT OF MINES
OIL AND GAS DIVISION
CHARLESTON

WELL LOCATION MAP
FILE NO. 300-399-A

+ Denotes location of well on United States Topographic Maps, scale 1 to 62,500, latitude and longitude lines being represented by border lines as shown.

- Denotes one inch spaces on border line of original tracing.

SILER COAL & LAND CO. - 990 - UNITED CARBON CO. - 300-399-A