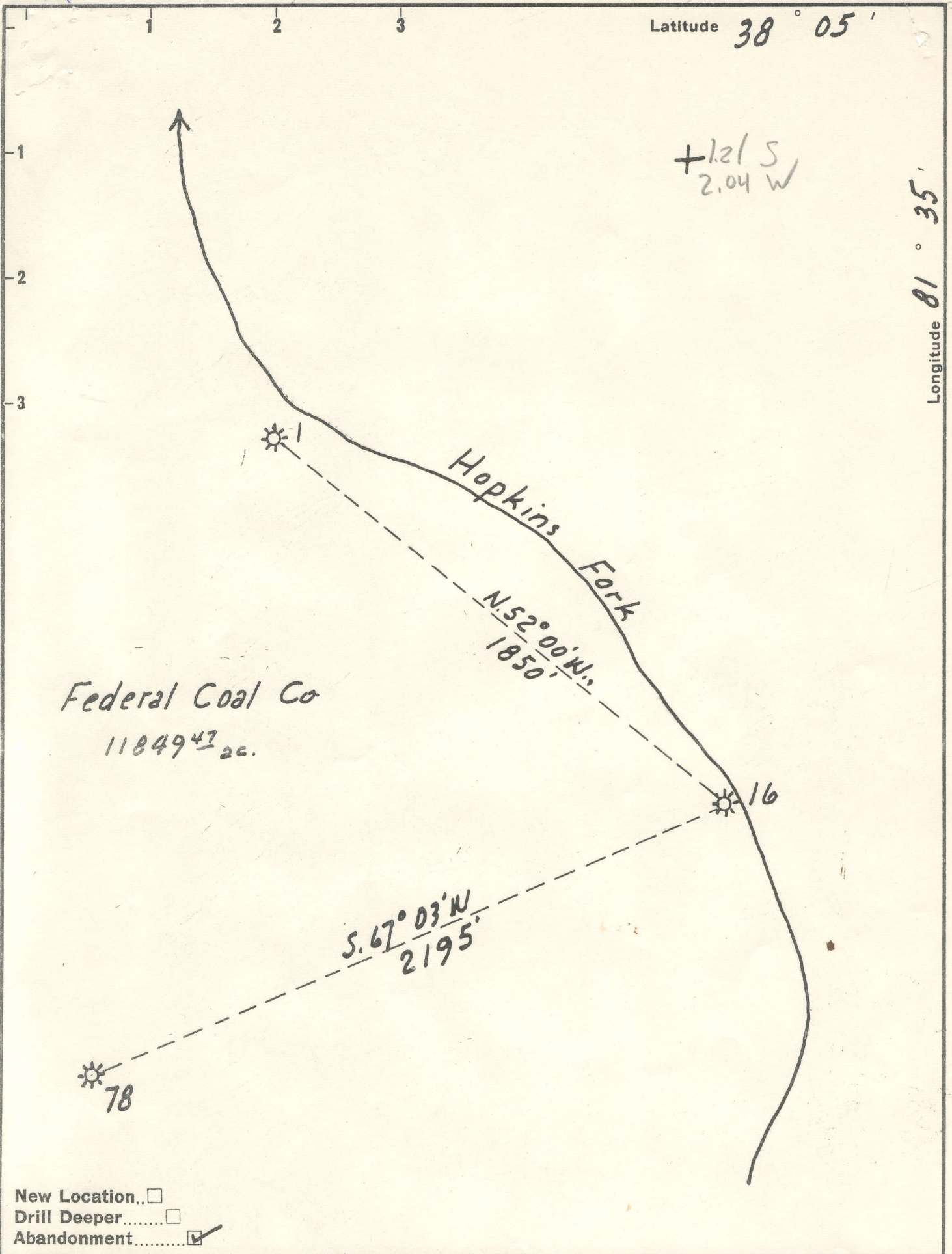


m

Latitude 38° 05'

Longitude 81° 35'

+ 1.21 S
2.04 W



New Location..
 Drill Deeper.....
 Abandonment.....

Company Pure Oil Co.
 Address Reed City, Michigan RFD #1
 Farm Federal Coal Co.
 Tract _____ Acres 11849.47 Lease No. Old 236 New 43213
 Well (Farm) No. 16 Serial No. 552
 Elevation (Spirit Level) 770.6
 Quadrangle Peytona
 County Boone District Sherman
 Engineer J. B. Hunter
 Engineer's Registration No. Ohio 2912
 File No. _____ Drawing No. _____
 Date 6-1-61 Scale 1" = 400'

STATE OF WEST VIRGINIA
 DEPARTMENT OF MINES
 OIL AND GAS DIVISION
 CHARLESTON

WELL LOCATION MAP
 FILE NO. Boo-387-A

+ Denotes location of well on United States Topographic Maps, scale 1 to 62,500, latitude and longitude lines being represented by border lines as shown.
 - Denotes one inch spaces on border line of original tracing.

FEDERAL COAL CO. NO. 16 WELL.

Sherman District, Boone County, W. Va.

By The Pure Oil Co. I. 1022 to 1023. 1022-2728. 1023-2728.

Drilled under permit No. Boo-387-Abandoned.

On 12000 acres, Lease No. 43213. A.T.E. No. 328 (552).

Elevation, 77016'.

Casing record. 10", 32.5, 8 national, set at 225' cemented (per JAW).

8 1/2" 24, 8 national 1258'. 6-5/8" 20, 10 national 1687'.

Well shot 10-4-26 2372'-2366' with 60 qts.

Drilling commenced August 4, 1926; completed October 3, 1926.

Drilled with Cable tools. Drilled in with cable tools.

First 24 hrs. Production-Natural 199,200 cu. ft. gas.

First 24 hrs. Production -after shot 350,880 cu. ft.

Gas-Rock press. 440 lbs. Volume 350,880 cu. ft.

Gas from 2375 to 2386'. Water at 250', 1 bbl. of water per hr at 695'.

Hole full of water at 1340'. Light showing of gas at 1820' and 1904'.

C.M. Means, Drilling Contractor.

Anchor packer set 692' from bottom.

Perforated 2374'-2395' 10-13-26.

Gas well.

Record to RCT from Mrs. Griffith Oct. 6, 1962.

O.F. No. 719-

	Thickness.	Top.	Bottom.
Surface gravel	15	0 -	15
Sand	55	15 -	70
Coal	5	70 -	75
Sand	25	75 -	100
Slate	15	100 -	115
Sand	42	115 -	157
Coal	2	157 -	160
Sand	150 10	160 -	170
Slate	30	170 -	200
Sand	40	200 -	240
Slate	20	240 -	260
Sand	40	260 -	300
Slate and shells	200	300 -	500
Sand	120	500 -	620
Grampus	120	620 -	740
Slate	110	740 -	850
Salt sand	150	850 -	1000
Slate, dark	15	1000 -	1015
Salt sand	205	1015 -	1220
Slate	10	1220 -	1230
Lime	30	1230 -	1260
Salt sand	189	1260 -	1449
Red rock	15	1449 -	1464
Slate and shells	121	1464 -	1585
Lime	34	1585 -	1619
Slate	4	1619 -	1623
Lime shell	17	1623 -	1640
Slate	8	1640 -	1648
Big lime	237	1648 -	1885
Big Injun, red	40	1885 -	1925
Slate and shells	25	1925 -	1950
Weir sand	20	1950 -	1970
Slate and shells	385	1970 -	2355
Berea sand	31	2355 -	2386
Slate Total Depth	6	2386 -	2392
Cleaned out			2407

(OVER)

Gas from 2375-86'; water at 250'; 1 bbl. of water per hr. at 695'. Hole full of water at 1340'; light showing of gas at 1820 and 1904'.

10" casing, 32.5#, set at 225'; 8 1/2", 24#, set at 1258'; 6 5/8", 20#, set at 1687'.

No cementing record.

Anchor packer set 692', from bottom. Perforated 2374'-2395', 10/13/26.

Well shot 10/4/26, from 2372 to 2386', with 60 quarts.

Handwritten note: 10/13/26

Top. Bottom.	Thickness.	
0 - 15	15	Surface gravel
15 - 70	55	Band
70 - 75	5	Coal
75 - 100	25	Band
100 - 115	15	Slate
115 - 127	12	Band
127 - 130	3	Coal
130 - 170	40	Band
170 - 200	30	Slate
200 - 240	40	Band
240 - 280	40	Slate
280 - 300	20	Band
300 - 300	0	Slate and shells
300 - 320	20	Band
320 - 340	20	Grampus
340 - 350	10	Slate
350 - 1000	650	Soft sand
1000 - 1015	15	Slate, dark
1015 - 1230	215	Soft sand
1230 - 1230	0	Slate
1230 - 1280	50	lime
1280 - 1440	160	Soft sand
1440 - 1440	0	red rock
1440 - 1385	55	Slate and shells
1385 - 1310	75	lime
1310 - 1285	25	Slate
1285 - 1240	45	lime shells
1240 - 1240	0	Slate
1240 - 1235	5	Big M
1235 - 1235	0	Big M, red
1235 - 1230	5	Slate and shells
1230 - 1230	0	Soft sand
1230 - 2385	1155	Slate and shells
2385 - 2385	0	Bees sand
2385 - 2385	0	Slate Total Depth

(OVER)

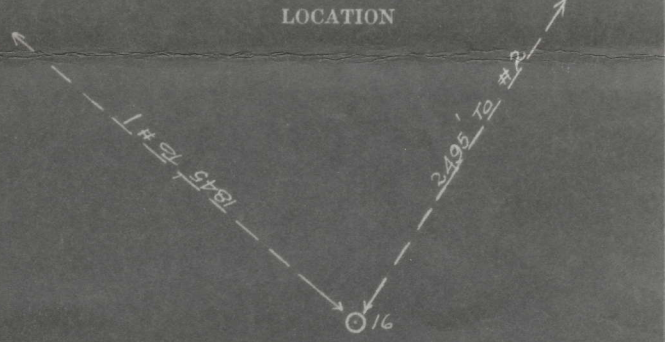
THE PURE OIL COMPANY
WELL LOG

GAS WELL

And Related Data **R. F. D. No. 1
REED CITY, MICH.**

LOG			
Top	Bottom	Thickness	Formation
0	15	15	Surface, gravel
15	70	55	Sand
70	75	5	Coal
75	100	25	Sand
100	115	15	Slate
115	157	42	Sand
157	160	3	Coal
160	170	10	Sand
170	200	30	Slate
200	240	40	Sand
240	260	20	Slate
260	300	40	Sand
300	500	200	Slate and shells
500	620	120	Sand
620	740	120	Crampus
740	850	110	Slate
850	1000	150	Salt sand
1000	1015	15	Slate, dark
1015	1220	205	Salt sand
1220	1230	10	Slate
1230	1260	30	Lime
1260	1449	189	Salt sand
1449	1464	15	Red rock
1464	1585	121	Slate and shells
1585	1619	34	Lime
1619	1623	4	Slate
1623	1640	17	Lime shell
1640	1648	8	Slate
1648	1895	237	Big lime
1895	1925	40	Big in jun, red
1925	1950	25	Slate and shells
1950	1970	20	Weir sand
1970	2356	386	Slate and shells
2356	2386	31	Berea sand
2386	2392	6	Slate
	2407		TOTAL DEPTH Cleaned out

Lease Federal Coal Company Well No. 16
 Lease No. 43213 Acres 12000 A. F. E. No. 328
 Elevation 770.6 Producing Division Charleston
 Lot _____
 Sec. _____ Twp. _____ Rge. _____
 Pct. _____
 Dist. Sherman Survey _____
 County Boone State West Va.



CASING RECORD

Size	Weight	Thread	Make	Set At	Remarks
10"	32.5	8	National	225'	Cemented (Per JAW)
8 1/2"	24	8	National	1258'	
6 5/8"	20	10	National	1687'	

CASING CEMENTING RECORD

Size	Set At	Sacks Used	Gallons Setfast	Results

LINER RECORD

Size	Weight	Length	No. Joints Blank	No. Joints Perforated	Set At

BRADENHEAD RECORD

Make	Size	Type	Remarks

INITIAL TORPEDO RECORD

Date	Top of Shot	Bottom of Shot	No. Qts.	Remarks
10/4/26	2372	2386	60	

REMARKS:
 Gas from 2375 to 2386.
 Water at 250'. 1 bbl of water per hr at 895'. Hole full of water at 1340'.
 Light showing of gas at 1820' and 1904'
 C. M. Means, Drilling Contractor

Anchor packer set 692' from bottom
 Perforated 2374' - 2395' 10/13/26

Drilling Commenced..... August 4th 19.26
 Drilling Completed..... October 3rd 19.26
 Drilled With..... Cable Tools
 Drilled In With..... Cable Tools
 First 24 Hrs. Production—Natural 199,200 cu ft Gas Bbbls.
 First 24 Hrs. Production—After Shot 350,880 cu ft Bbbls.
 Gravity....., Temp....., Grade.....
 Gas-Rock Press. 440 Lbs., Volume 350,880 Cu. Ft.
 Date Abandoned....., 19.....

THE DIVISIONAL OPERATING DEPARTMENT WILL SEND DUPLICATE AND TRIPPLICATE COPIES OF THIS REPORT TO THE GEOLOGICAL DEPARTMENTS OF THE GENERAL OFFICE AND THE DIVISION OFFICE.

FEDERAL COAL Co., No. 16 - 687 - 6 1962 PURE OIL Co. Boone 387-A 779