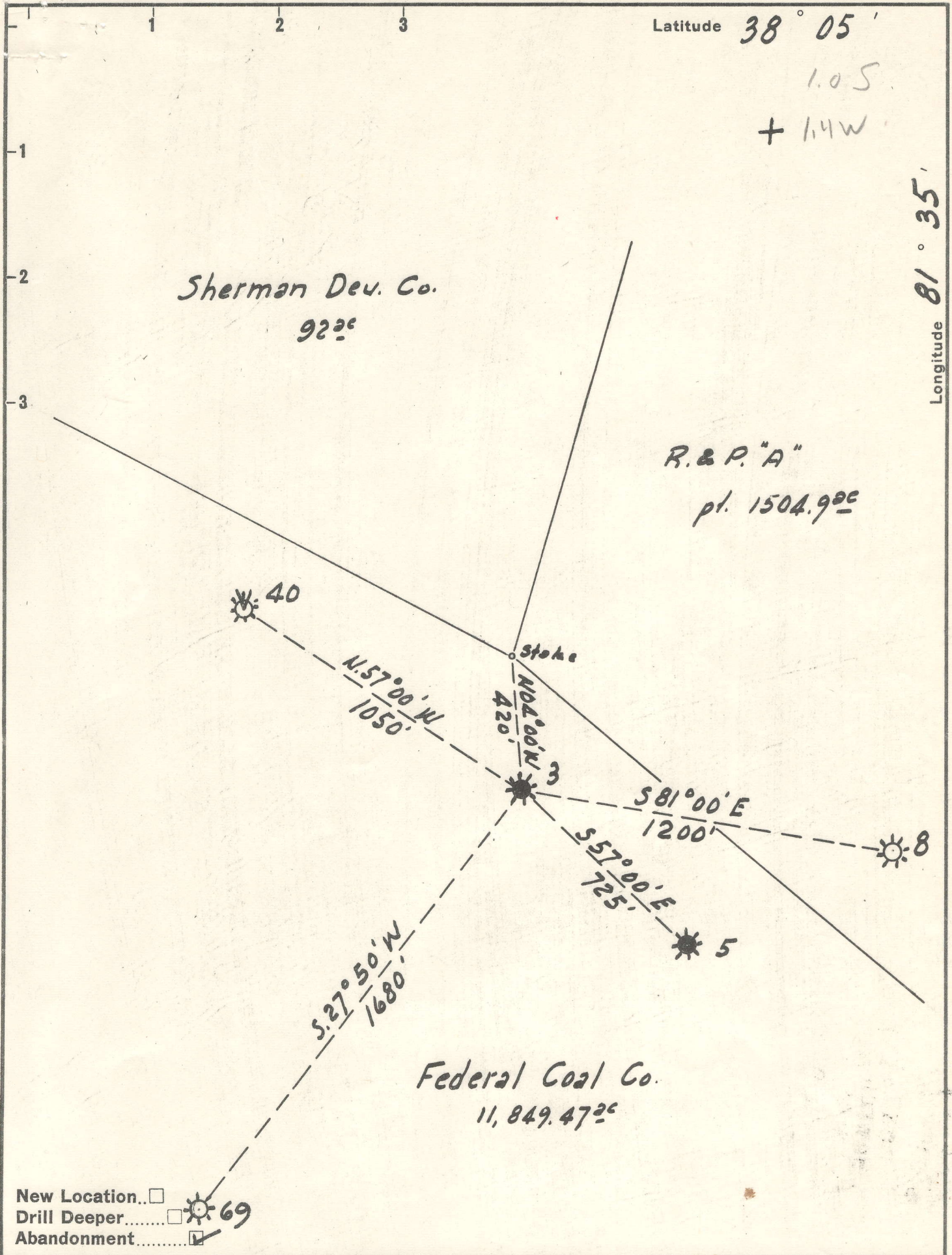


mm



New Location...
 Drill Deeper..... 69
 Abandonment.....

Company The Pure Oil Co.
 Address Reed City, Michigan RFD #1
 Farm Federal Coal Co.
 Tract _____ Acres 11,849.47 Lease No. 236 old 43213 New
 Well (Farm) No. 3 Serial No. 548
 Elevation (Spirit Level) 1383 E
 Quadrangle Peytona
 County Boone District Sherman
 Engineer J. B. Hunter
 Engineer's Registration No. Ohio-2912
 File No. _____ Drawing No. _____
 Date 5-31-61 Scale 1" = 400'

STATE OF WEST VIRGINIA
 DEPARTMENT OF MINES
 OIL AND GAS DIVISION
 CHARLESTON

WELL LOCATION MAP
 FILE NO. Boo. 384-A

+ Denotes location of well on United States Topographic Maps, scale 1 to 62,500, latitude and longitude lines being represented by border lines as shown.
 - Denotes one inch spaces on border line of original tracing.

70030

FEDERAL COAL CO. NO. 3 WELL.

No. 5 O.F.

Boone 384A

Sherman District, Boone County, W. Va.

The Pure Oil Co.

Started July 11, 1921; finished, Jan. 1, 1922.

Elevation, 1383.45' L.

Conductor, 16"; 10" casing, 877'; 8", 1997'; 6-5/8", 2319'. All casing left in. All casing steel-line measurement.

Record received Feb. 10, 1922, from Jas. H. Dye, Mgr., Pure Oil Co., Charleston, W. Va.

	Top.	Bottom.
Drift	0	16
Sand	16	70
Lime	70	270
Slate	270	420
Sand	420	520
Lime	520	570
Slate and shells	570	792
Sand	792	850
Coal	850	854
Shells	854	865
Lime	865	880
Sand	880	900
Slate and shells	900	1250
Sand	1250	1410
Black lime	1410	1480
Salt Sand (water, 1590-1600')	1480	1720
Slate	1720	1750
Sand	1750	1830
Lime	1830	1990
Sand, Maxton? (water, 2024-2034')	1990	2100
Lime	2100	2120
Red rock	2120	2125
Black slate	2125	2210
Black lime	2210	2245
Little Lime	2245	2293
Pencil Cave	2293	2296
Big Lime (gas show, 2480')	2296	2540
Slate	2540	2543
Sand, Big Injun (red)	2543	2620
Shells	2620	2720
Sand, Squaw (gas, 2720-2725'; 500 M.)	2720	2732
Slate	2732	2800
Sand, Weir	2800	2880
Slate	2880	2965
Shells	2965	3014
Brown Shale, Coffee	3014	3028
Berea Sand	3028	3060
Slate, to bottom	3060	3110

Hole filled from 3110 to 3058'.

Boo 38A-A

COPY
 THE PURE OIL COMPANY
WELL LOG
 And Related Data
R. F. D. No. 1
REED CITY, MICH.

3000-248-A

Top	Bottom	Thickness	Formation
	16		Drift
	70		Sand
16	70		Lime
70	270		Slate
270	420		Sand
420	520		Lime
520	570		Slate & Shells
570	792		Sand
792	850		Coal
850	854		Shells
854	865		Lime
865	890		Sand
890	900		Slate & Shells
900	1250		Sand
1250	1410		Black Lime
1410	1480		Salt Sand
1480	1720		Slate
1720	1750		Sand
1750	1830		Lime
1830	1990		Sand
1990	2100		Lime
2100	2120		Red Rock
2120	2125		Black Slate
2125	2210		Black Lime
2210	2245		Little Lime
2245	2293		Pencil Cave
2293	2296		Big Lime
2296	2540		Slate
2540	2543		Injun (Red)
2543	2620		Shells
2620	2720		Sand
2720	2732		Slate
2732	2800		Sand
2800	2880		Slate
2880	2965		Shells
2965	3014		Brown Shale
3014	3028		Berea Sand
3028	3060		Slate
3060	3110		

Total Depth
 3107' C.N. lowered 3' 7/24/38
 ANCHOR PACKER SET 634' FROM BOTTOM 4/1/38

Remarks

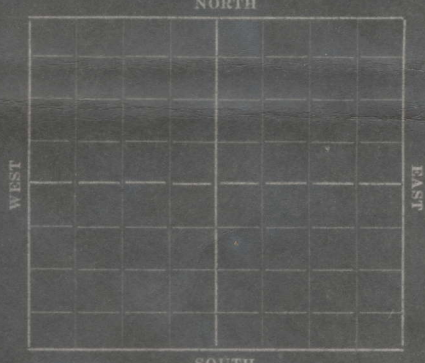
Water 1590 to 1600 and 2024 to 2034
 Show of gas 2480, 2720 to 2725 - 1/2 Mi. ft.

(OVER) *Drilling Contractor*
Wolf & Gilmore

Lease Federal Coal Co. Well No. 3
 Lease No. 43213 Acres 12000 A. F. E. No.
 Elevation 1383 Producing Division Charleston
 Lot Sec. Twp. Rge.
 Pct. Sherman Survey
 County Boone State W. Va.

LOCATION

Feet North of South Line
 Feet East of West Line
 Feet South of North Line
 Feet West of East Line



CASING RECORD

Size	Weight	Thread	Make	Set At	Remarks
Cond.				16'	
10"				677'	
8"				1997'	
6-5/8"				2319'	
All casing steel line meas.					
2"				3110'	
1/4"				3108'	Pulled 7/25/38.

CASING CEMENTING RECORD

Size	Set At	Sacks Used	Gallons Setfast	Results

LINER RECORD

Size	Weight	Length	No. Joints Blank	No. Joints Perforated	Set At

BRADENHEAD RECORD

Make	Size	Type	Remarks

INITIAL TORPEDO RECORD

Date	Top of Shot	Bottom of Shot	No. Qts.	Remarks
Jan. 3, 1922	3047	3058	40	Berea
Jan. 16, 1922	3045	3058	80	"
Drilling Commenced		July 11,		19.21
Drilling Completed		Jan. 1,		19.22
Drilled With				Tools
Drilled In With				Tools
First 24 Hrs. Production—Natural				Bbbs.
First 24 Hrs. Production—After Shot				Bbbs.
Gravity				Temp. Grade
Gas-Rock Press				Lbs., Volume 500,000 Cu. Ft.
Date Abandoned				19.

7-6-32

THE DIVISIONAL OPERATING DEPARTMENT WILL SEND DUPLICATE AND TRIPPLICATE COPIES OF THIS REPORT TO THE GEOLOGICAL DEPARTMENTS OF THE GENERAL OFFICE AND THE DIVISION OFFICE.

067 - 6 1932

FEDERAL COAL CO., 3(748) - FUD = OIL O - Boo. 38A A