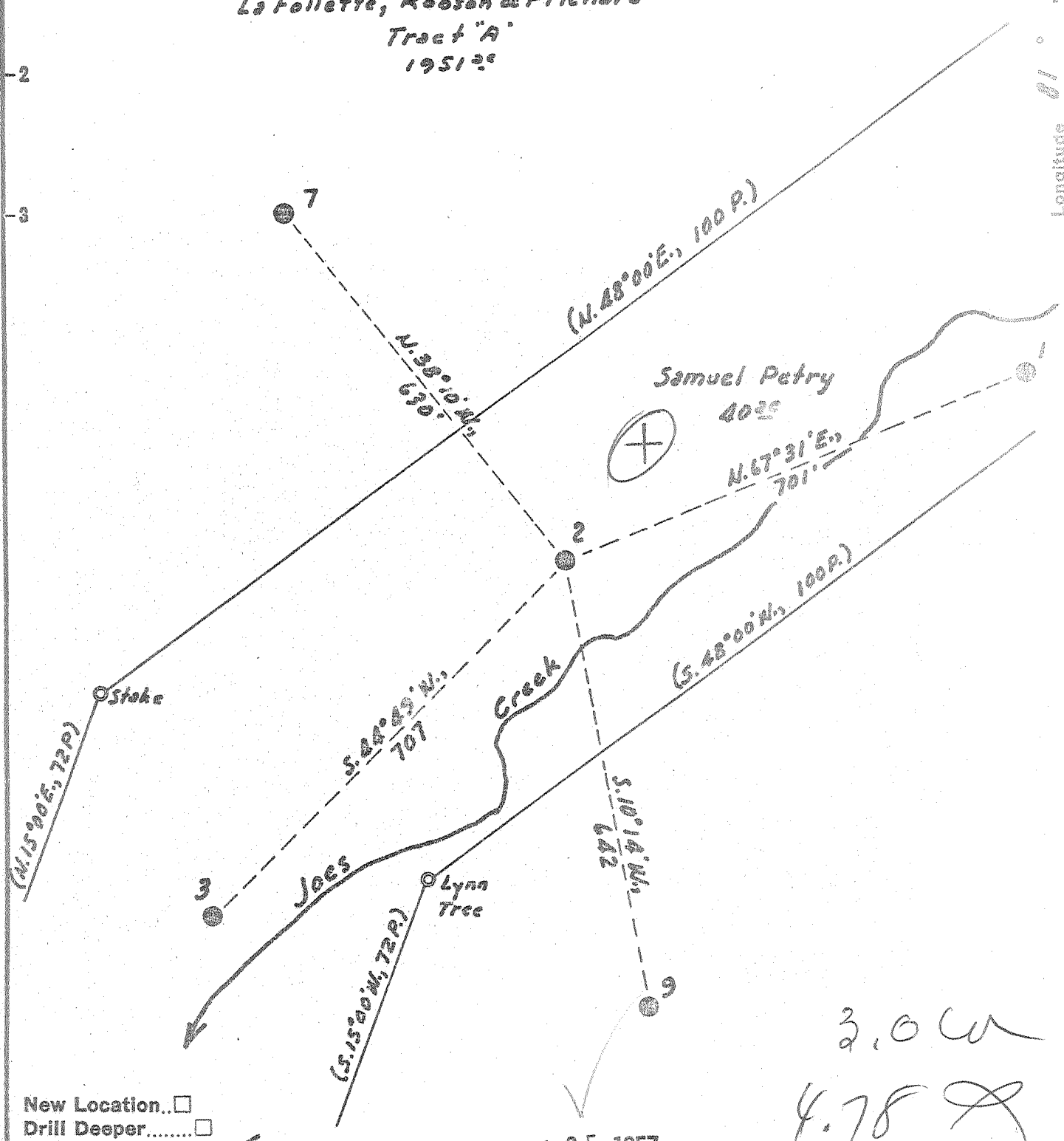


Latitude 38° 10'

Longitude 81° 30'

La Follette, Robson & Prichard  
Tract "A"  
1951<sup>2c</sup>



New Location...   
 Drill Deeper.....   
 Abandonment.....

NOV 25 1957

3.0 W  
 4.75 R

Company	Pure Oil Co.
Address	Newark, Ohio
Farm	Samuel Petry
Tract	-
Acres	40
Lease No.	250
Well (Farm) No.	2
Serial No.	520
Elevation (Spirit Level)	381
Quadrangle	Peytona
County	Boone
District	Sherman
Engineer	J. B. Hunter
Engineer's Registration No.	Ohio - 2912
File No.	
Drawing No.	
Date	3/4/57
Scale	1" = 200'

STATE OF WEST VIRGINIA  
 DEPARTMENT OF MINES  
 OIL AND GAS DIVISION  
 CHARLESTON

WELL LOCATION MAP  
 FILE NO. B00-307-A

+ Denotes location of well on United States Topographic Maps, scale 1 to 62,500, latitude and longitude lines being represented by border lines as shown.

-- Denotes one inch spaces on border line of original tracing.

SAMUEL PETRY No. 2 - PURE OIL CO. - B00-307-A