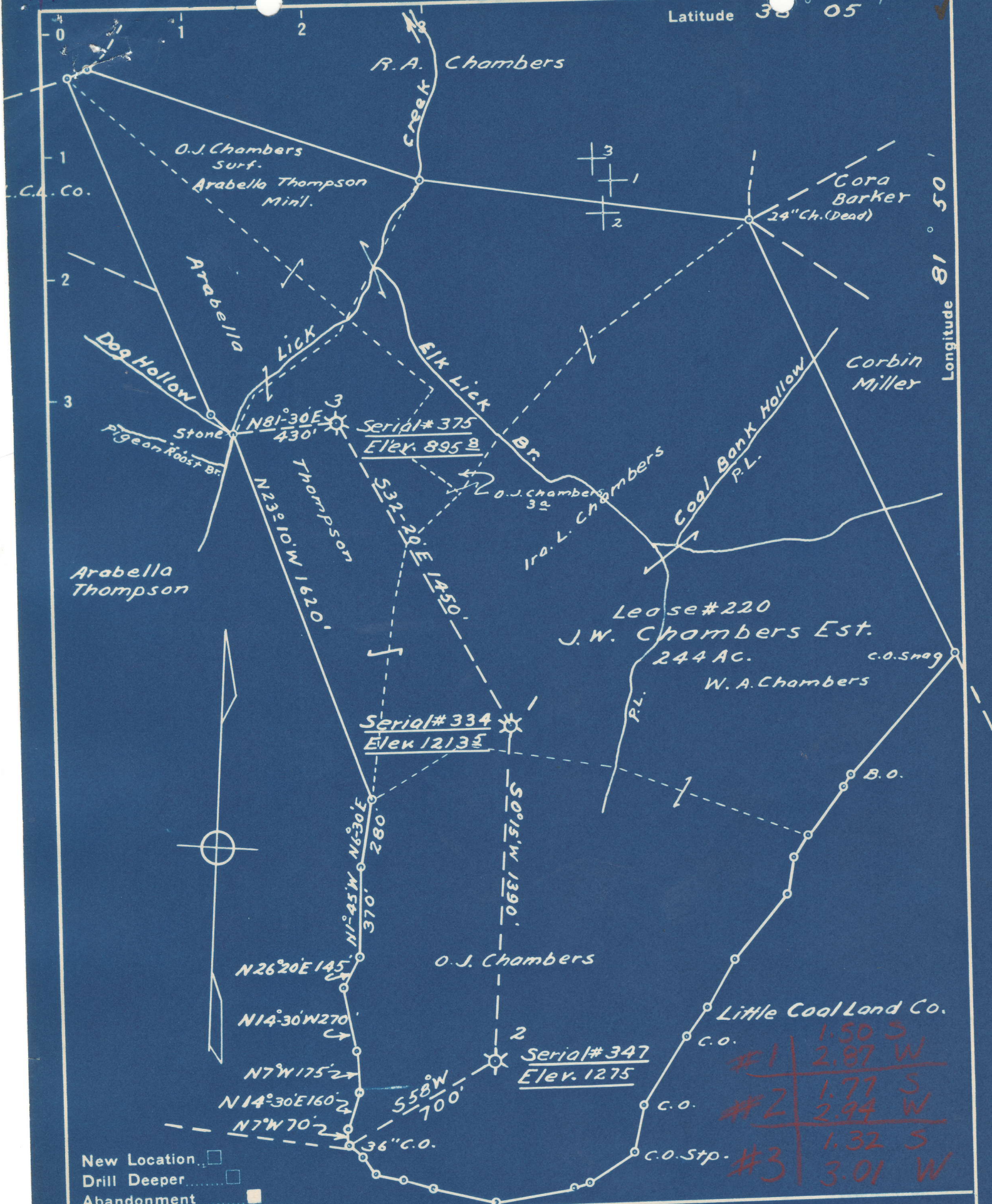


Latitude 38° 05'

Longitude 81° 50'



New Location
 Drill Deeper
 Abandonment

#1	1.50 S
#1	2.87 W
#2	1.77 S
#2	2.94 W
#3	1.32 S
#3	3.01 W

Company Owens, Libbey-Owens Gas Dept
 Address Box 4158 Charleston 4 W. Va.
 Farm J.W. Chambers Estate
 Tract _____ Acres 244 Lease No. 220
 Well (Farm) No. 1, 2 & 3 Serial No. 334
347
375
 Elevation (Spirit Level) 1-1213.5; 2-1275; 3-895.8
 Quadrangle Madison
 County Boone District Scott
 Engineer T.S. Flournoy
 Engineer's Registration No. 269
 File No. _____ Drawing No. _____
 Date Apr 11, 1949 Scale 1 inch = 500 feet

STATE OF WEST VIRGINIA
 DEPARTMENT OF MINES
 OIL AND GAS DIVISION
 CHARLESTON

WELL LOCATION MAP

FILE NO. B00-147-A-#1
B00-148-A-#2
B00-149-A-#3

+ Denotes location of well on United States Topographic Maps, scale 1 to 62,500, latitude and longitude lines being represented by border lines as shown.
 - Denotes one inch spaces on border line of original tracing.

70015

J. W. CHAMBERS NO. 3 (375) WELL.

Boone 149A

Scott District, Boone County, W. Va.

By Owens, Libbey-Owens Gas Dept., Box 4158, Charleston, W. Va.

Abandoned under permit Boo-.....-A?

On 250 acres, on Lick Creek.

Elevation, ' L.

Coal owned by Arabella Thompson, Danville, W. Va.

Drilling commenced June 21, 1929; completed Aug. 10, 1929.

Shot Aug. 10, 1929, at 1957-1985', with 120 qts., 5½" shell.

Volume, Berea, 90,000 cu. ft.

Rock pressure, 535 lbs. in 24 hrs.

13" casing, 16'; 6½", 1267'; 3" tubing, 2027'; all left in.

Oilwell special gas anchor packer, 3 x 6½ x 16, set at 1441-1444'.

Perf. top, 1982; bot., 1987; top, 2007; bot., 2012'.

Gas well. Record to Dept. of Mines dated April 12, 1949.

Record to RCT from Mrs. Griffith September 14, 1949. Old File No. 578.

	Top.	Bottom.
Surface, yellow, soft	0	15
Clay, gray, soft	15	40
Slate, blue, soft	40	65
Lime, white, hard (water, 75')	65	100
Sand, white, hard	100	140
Slate, blue, soft	140	150
Sand, white, soft	150	170
Slate, blue, soft	170	200
Sand, white, hard	200	208
Slate, black, soft	208	270
Lime, gray, hard	270	295
Slate, black, soft	295	330
Slate, white, soft	330	395
Sand, gray, hard	395	445
Slate, black, soft	445	460
Sand, white, hard	460	655
Slate, black, soft	655	660
Slate, white, soft	660	750
Salt Sand, white, hard	750	1090
Red rock	1090	1100
Lime and slate, white, hard	1100	1105
Slate, white, hard	1105	1135
Slate and shells, gray, hard	1135	1175
Lime	1175	1195
Slate, white, soft	1195	1210
Lime, white, hard	1210	1242
Slate, white, soft	1242	1249
Lime, black, hard	1249	1264
Pencil Cave, black, soft	1264	1267
Big Lime, white, hard (gas, 1402'; 13 M.)	1267	1475
Big Injun Sand, red, hard	1475	1523
Slate and shells, gray, soft	1523	1600
Lime, gray, hard	1600	1625
Sand, gray, hard	1625	1645
Lime, gray, hard	1645	1670
Slate and shells, gray, hard	1670	1750
Slate, gray, soft	1750	1810
Lime, gray, hard	1810	1935
Shale, black, soft	1935	1958

(OVER)

APR 1944

7012

J. W. CHAMBERS NO. 3 (375) WELL (Continued).

	Top.	Bottom.
Berea Sand; white, hard (gas, 1962', 19 M.; gas, 1964', 33 M.; gas, 1967', 55 M.) (open flow before shot, 59 M.; 6 hrs. after shot, 166 M.)	1958	1985
Slate and shells	1985	1995
Slate	1995	2021
Total depth		2021

Top.	Bottom.	
0	15	Surface yellow soft
15	40	Gray, gray soft
40	65	Slate, blue soft
65	100	lime white, hard (water, 75')
100	140	Sand, white, hard
140	170	Slate, blue, soft
170	200	Sand, white, soft
200	230	Slate, blue, soft
230	260	Sand, white, hard
260	290	Slate, black, soft
290	320	lime, gray, hard
320	350	Slate, black, soft
350	380	Slate, white, soft
380	410	Sand, gray, hard
410	440	Slate, black, soft
440	470	Sand, white, hard
470	500	Slate, black, soft
500	530	Slate, white, soft
530	560	Sand, white, hard
560	590	Sand, white, hard
590	620	Red rock
620	650	lime and slate, white, hard
650	680	Slate, white, hard
680	710	Slate and shells, gray, hard
710	740	lime
740	770	Slate, white, soft
770	800	lime, white, hard
800	830	Slate, white, soft
830	860	lime, black, hard
860	890	Benoit Cove, black, soft
890	920	Big lime, white, hard (gas, 1402', 13 M.)
920	950	Big lime, white, hard
950	980	Slate and shells, gray, soft
980	1010	lime, gray, hard
1010	1040	Sand, gray, hard
1040	1070	lime, gray, hard
1070	1100	Slate and shells, gray, hard
1100	1130	Slate, gray, soft
1130	1160	lime, gray, hard
1160	1190	lime, gray, hard
1190	1220	Slate, black, soft

(over)



Completed no inspection



STATE OF WEST VIRGINIA DEPARTMENT OF MINES OIL AND GAS DIVISION

578

WELL RECORD

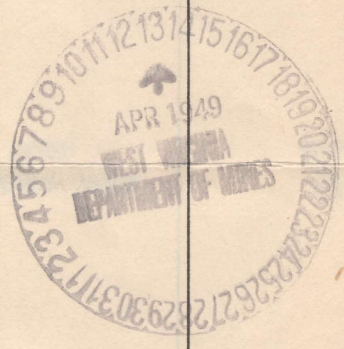
Permit No. 149A Oil or Gas Well Gas (KIND)

Company OWENS, LINNEY-OWENS GAS DEPARTMENT
Address P. O. Box 1150, Charleston 4, W. Va.
Farm J. W. Chambers Acres 250
Location (waters) Lick Creek
Well No. 010 #375, Cora #3 Elev.
District Scott County Boone
The surface of tract is owned in fee by
Address
Mineral rights are owned by Arabella Thompson
Address Danville, W. Va.
Drilling commenced 6-21-29
Drilling completed 8-10-29
Date Shot 6-10-29 From 1957 To 1985
With 120 cts. 5 1/2" Shell
Open Flow /10ths Water in Inch
/10ths Merc. in Inch
Volume Boone 90 M Cu. Ft.
Rock Pressure 535 lbs. 24 hrs.
Oil bbls., 1st 24 hrs.
Fresh water feet feet
Salt water feet feet

Table with columns: Casing and Tubing, Used in Drilling, Left in Well, Packers. Includes entries for sizes 16, 13, 10, 8 1/4, 6 5/8, 5 3/16, 3, 2 and packer details like Oilwell Special Gas Anchor.

CASING CEMENTED SIZE No. Ft. Date
COAL WAS ENCOUNTERED AT FEET INCHES
FEET INCHES FEET INCHES
FEET INCHES FEET INCHES

Main well log table with columns: Formation, Color, Hard or Soft, Top, Bottom, Oil, Gas or Water, Depth Found, Remarks. Lists geological layers from Surface to Slate with depths and remarks like 'water' and 'Gas'.



Formation	Color	Hard or Soft	Top	Bottom	Oil, Gas or Water	Depth Found	Remarks
Line	Gray	Hard	1810	1935			
Shale	Black	Soft	1935	1958			
Berea Sand	White	Hard	1958	1985	Gas	1962'	19 H
					Gas	1964'	33 H
					Gas	1967'	55 H
Slate & Shells	-	-	1985	1995			
Slate	-	-	1995	2021			
Total Depth				2021			
					Open flow Before Shot		59 H
					6 Hrs. After Shot		166 H

DEPARTMENT OF MINES Date April 12, 1949

OWENS, LIBBY-OWENS GAS DEPARTMENT, Owner

APPROVED

By A. H. McClain (Title) Geologist