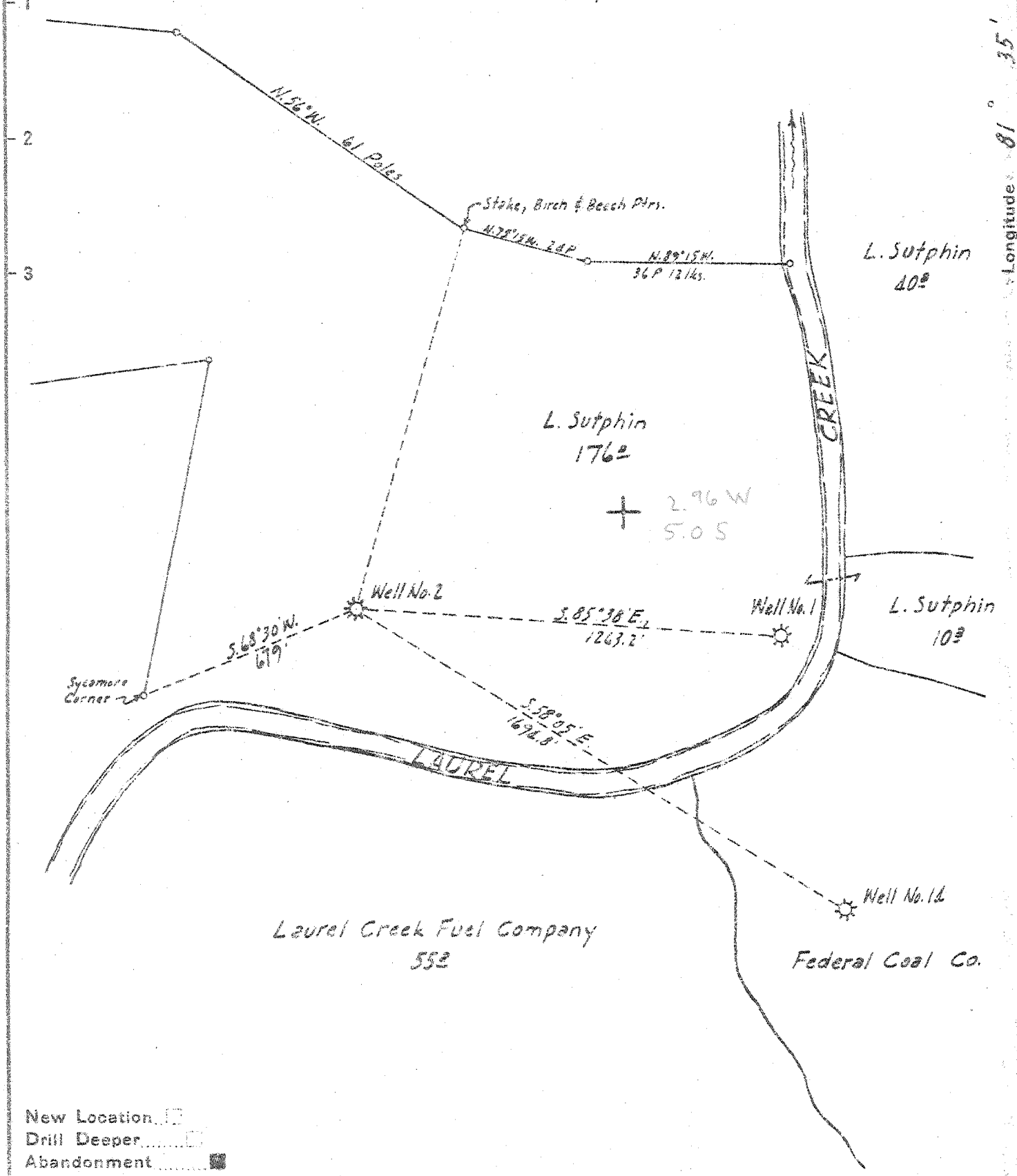


Federal Coal Company



New Location   
 Drill Deeper   
 Abandonment

Company The Pure Oil Company  
 Address Newark, Ohio  
 Farm L. Sutphin  
 Tract \_\_\_\_\_ Acres 186 Lease No. 247  
 Well (Farm) No. 2 Serial No. 211  
 Elevation (Spirit Level) 889.0  
 Quadrangle Peytona  
 County Boone District Sherman  
 Engineer J. B. Hunter  
 Engineer's Registration No. Ohio 2912  
 File No. \_\_\_\_\_ Drawing No. \_\_\_\_\_  
 Date April 30, 1946 Scale 1" = 200'

STATE OF WEST VIRGINIA  
 DEPARTMENT OF MINES  
 OIL AND GAS DIVISION  
 CHARLESTON

WELL LOCATION MAP

FILE NO. B90-125-A-#2

+ Denotes location of well on United States Topographic Maps, scale 1 to 62,500, latitude and longitude lines being represented by border lines as shown.  
 - Denotes one inch spaces on border line of original tracing.



559 ✓

STATE OF WEST VIRGINIA  
DEPARTMENT OF MINES  
OIL AND GAS DIVISION

WELL RECORD

Permit No. 115-A

Oil or Gas Well Gas  
(KIND)

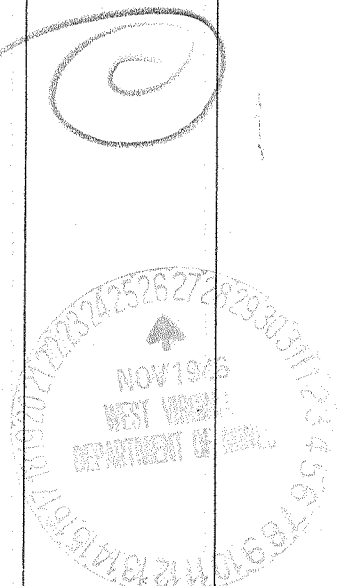
Company The Pure Oil Company  
Address Box 551 - Newark, Ohio  
Farm L. & N. Sutphin Acres 186  
Location (waters) Laurel Creek  
Well No. 2 Elev. 889'  
District Sherman County Boone  
The surface of tract is owned in fee by Leff Sutphin, et al  
Address Seth, W. Va.  
Mineral rights are owned by Leff Sutphin, et al  
Address Seth, W. Va.  
Drilling commenced February 23, 1927  
Drilling completed May 20, 1927  
Date Shot 5-20-27 From 2456' To 2480'  
With 100 quarts glycerin  
Open Flow /10ths Water in Inch  
/10ths Merc. in Inch  
Volume 998,790 Cu. Ft.  
Rock Pressure 420 lbs. 12 hrs.  
Oil  bbls., 1st 24 hrs.  
Fresh water 400 feet  
Salt water 1490 feet

Casing and Tubing	Used in Drilling	Left in Well	Packers
Size			
16			Kind of Packer
13			
10	<u>340'</u>	<u>340'</u>	Size of
8 1/4	<u>1390'</u>	<u>1390'</u>	
6 5/8	<u>1814'</u>	<u>1814'</u>	Depth set
5 3/16			
3			Perf. top
2			Perf. bottom
Liners Used			Perf. top
			Perf. bottom

CASING CEMENTED  SIZE  No. Ft.  Date

COAL WAS ENCOUNTERED AT 235 FEET 60 INCHES  
255 FEET 60 INCHES FEET INCHES  
 FEET INCHES FEET INCHES

Formation	Color	Hard or Soft	Top	Bottom	Oil, Gas or Water	Depth Found	Remarks
Surface			0	10			
slate			10	100			
sand			100	120			
slate			120	200			
lime			200	235			
coal			235	240			
lime			240	250			
slate			250	255			
coal			255	260			
slate			260	400	Water	400'	Hole full
sand			400	420			
slate & Shells			420	700			
sand			700	780			
break			780	785			
crampus			785	900			
lime			900	1000			
salt Sand		hard	1000	1545	Water	1490'	2 bailers
red Rock			1545	1555			
lime			1555	1605			
slate & Lime			1605	1635			
sand			1635	1695			
slate & Lime			1695	1705			
lime			1705	1755			
slate			1755	1770			
big Lime			1770	1975			
big Injun			1975	2040			
slate & Sand			2040	2432			
brown Shale			2432	2444			
beres			2444	2480			
slate			2480	2488			
Total depth:			2488'				



Formation	Color	Hard or Soft	Top	Bottom	Oil, Gas or Water	Depth Found	Remarks

Date November 23, 1946

APPROVED The Pure Oil Company, Owner  
Box 551 Newark, Ohio  
 By Harold Hillis  
 (Title) Division Supt.