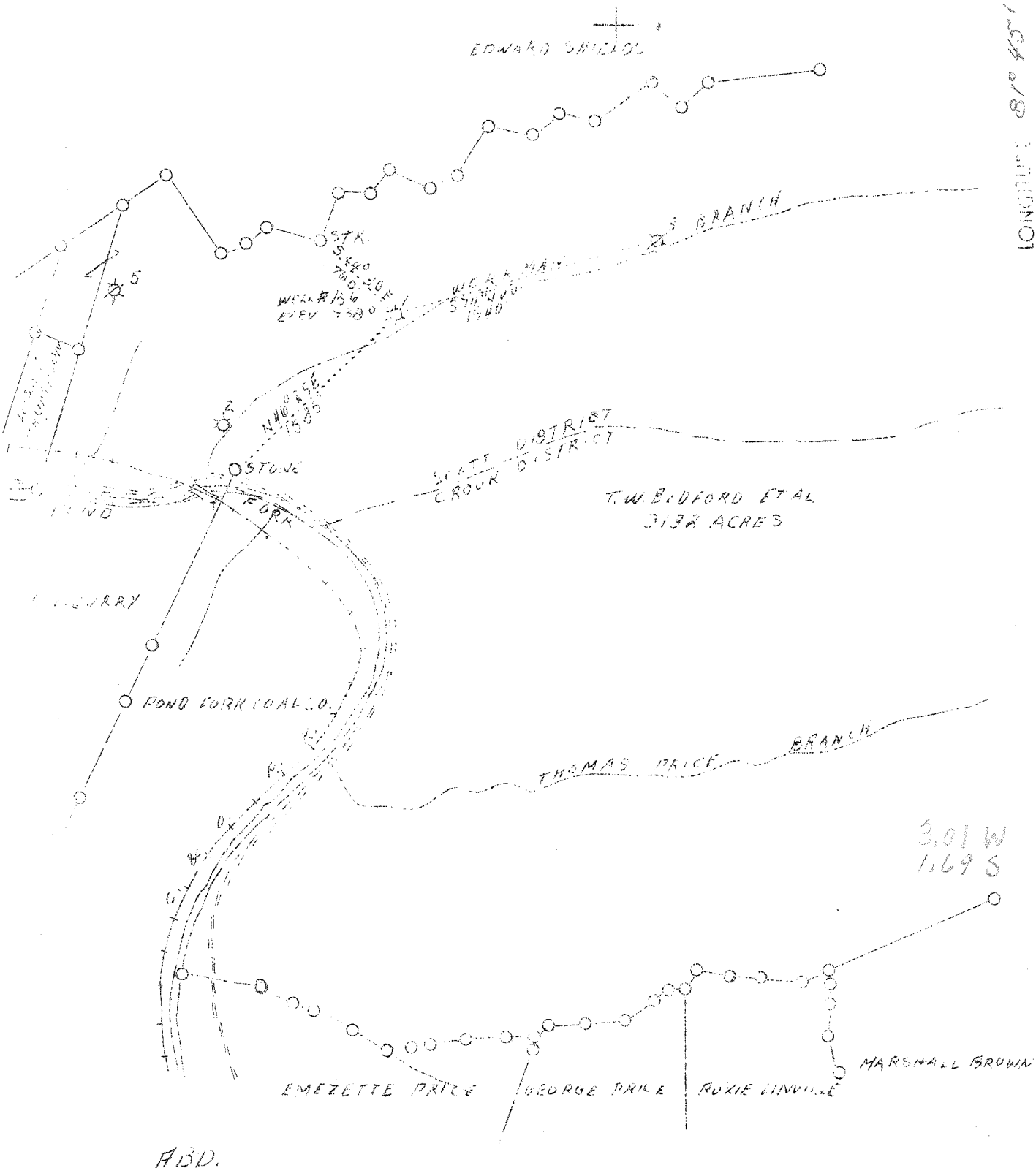


LATITUDE 39° 05'

LONGITUDE 81° 45'



Company Owens-Libbey-Owens Gas Dept.,
 Address Box 1375, Charleston, W.Va.
 Farm T. W. Bedford, et al
 Acres 3132
 Lease No. 234
 Well (Farm) No. One
 Serial No. 136
 Elevation (SP) 738.0
 Quadrangle Madison S.E.
 County Boone
 District Scott
 Engineer T. S. Flournoy
 Eng. Reg. No. 269
 Date Oct. 19, 1938
 Scale 1" = 1000'

STATE OF WEST VIRGINIA
 Department of Mines
 OIL & GAS DIVISION
 Charleston

WELL LOCATION MAP
 File No. Boo-65-A

x Denotes location of well on U. S. Topographic Maps, scale 1 to 62,500, latitude and longitude lines being represented by border lines as shown.

- Denotes one inch spaces on border line of original tracing.