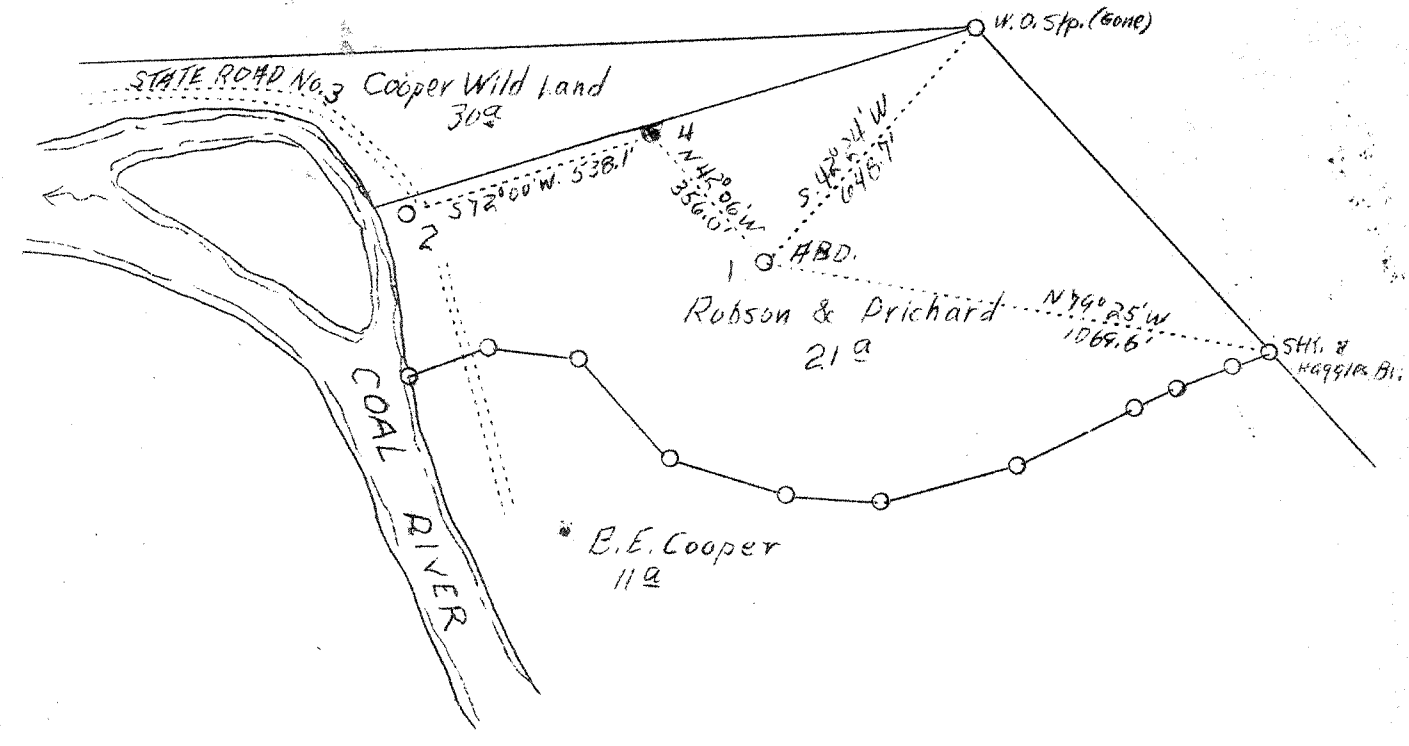


M

LATITUDE 38° 05'

LONGITUDE 81° 35'



03 S
04 W

ABD.

Company The Pure Oil Co.
 Address Newark, Ohio
 Farm Robson & Prichard
 Acres 21 - Lease No. 269
 Well (Farm) No. 2
 Elevation 718.9 (Spirit Level)
 Quadrangle Peytona S.C.
 County Boone
 District Sherman
 Engineer John C. Owens
 Eng. Reg. No. Ohio 5270
 Date May 30, 1938
 Scale 1" = 400'

STATE OF WEST VIRGINIA
 Department of Mines
 OIL & GAS DIVISION
 Charleston

WELL LOCATION MAP
 File No. Boo-58-A

Denotes location of well on U. S. Topographic Maps, scale 1 to 62,500; latitude and longitude lines being represented by border lines as shown.

Denotes one inch spaces on border line of original tracing.

WEST VIRGINIA DEPARTMENT OF MINES
OIL AND GAS DIVISION

400

WELL RECORD

Permit No. 000-58A

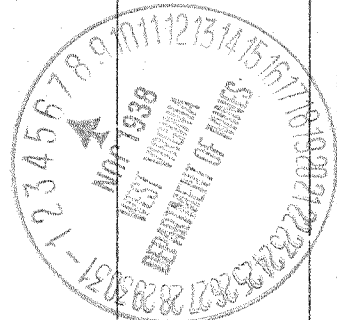
Oil or Gas Well (Kind)

Company The Pure Oil Company
 Address Box 551 - Newark, Ohio
 Farm R. & P. 21-A Acres 21
 Location (waters) Coal River
 Well No. 2 Elev. 718.9
 District Sherman County Boone
 The surface of tract is owned in fee by L. Prichard & Robson Realty Co. Address Huntington, W. Va.
 Mineral rights are owned by L. Prichard & Robson Realty Co. Address Huntington, W. Va.
 Drilling commenced March 4, 1921
 Drilling completed August 17, 1921
 Date shot August 20, 1921 Depth of shot 2422-2426
 Open Flow /10ths Water in Inch
 /10ths Merc. in Inch
 Volume No record Cu. Ft.
 Rock Pressure lbs. hrs.
 Oil No record bbls., 1st 24 hrs.
 Fresh water 1380 feet feet
 Salt water 822 feet feet

Casing and Tubing	Used in Drilling	Left in Well	Packers
Size			
16			Kind of Packer.....
12 12 1/2	40	40	
10	410	410	Size of.....
8 1/4	1205	1205	
6 5/8	1707	1707	Depth set.....
5 3/16			
3			Perf. top.....
2			Perf. bottom.....
Liners Used.....			Perf. top.....
			Perf. bottom.....

CASING CEMENTED..... SIZE..... No. FT..... Date.....
 COAL WAS ENCOUNTERED AT 90 FEET 60 INCHES
446 FEET 36 INCHES..... FEET..... INCHES
 FEET..... INCHES..... FEET..... INCHES

Formation	Color	Hard or Soft	Top	Bottom	Oil Gas or Water	Depth Found	Remarks
Gravel			0	40			
Sand			40	55			
Slate			55	90			
Coal			90	95			
Lime			95	120			
Slate			120	180			
Sand			180	230			
Slate			230	255			
Sand			255	290			
Slate			290	350			
Lime			350	380			
Slate			380	420			
Sand			420	430			
Slate			430	446			
Coal			446	449			
Sand			449	540			
Slate			540	593			
<u>GRAMFUS</u>			593	625			
Slate			625	792			
<u>SALT SAND</u>			792	1200	Water	822	
Slate			1200	1205			
Lime			1205	1330			
Slate			1330	1350			
<u>MAXON</u>			1350	1480	Water	1380	
Slate Shells			1480	1675			
Little Lime			1675	1690			
Slate			1690	1707			
<u>BIG LIME</u>			1707	1940			
<u>INJUN</u>			1940	1985			
Slate Shells			1985	2055			
<u>WEIR</u>			2055	2130			
Slate Shells			2130	2376			
Shale			2376	2391			
<u>BIRBA</u>			2391	2426			
Slate			2426	2430			
			Total Depth 2430				



AUG 12 1921

