

LATITUDE 38° 10' 00"



LONGITUDE 81° 50' 00"

7.5 OGIS topo location

7.5' loc 0.315 15' loc _____
1.95 W (calc.) _____

Company _____

Farm _____

Quad Julian 7.5 / Madison 15 C

County Boone

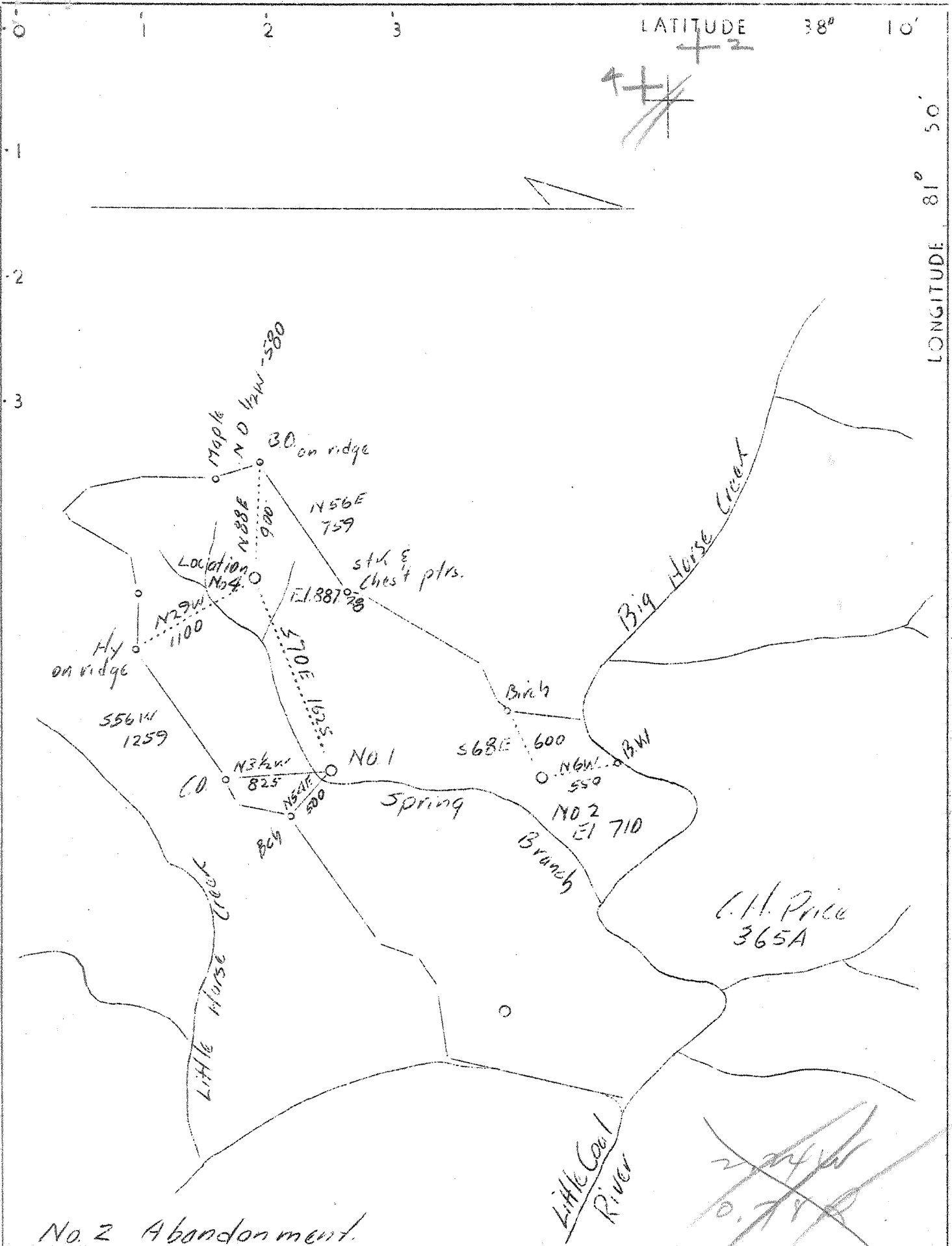
District Boone Scott

location

WELL LOCATION MAP

File No. 005-48A
Boone

not in computer
see Boone 382 plot



No. 2 Abandonment.

Company	Cambridge Gas Co.
Address	Kanawha Bank & Trust Bldg. Charleston, W. Va.
Farm	J.T. Price
Tract	Acres 235 Lease No.
Well No.	2 & 4 Serial No.
Elevation (Spirit Level)	710' & 887.28'
Quadrangle	Madison
County	Boone District Scott
Engineer	John D. Moore
Engineer's Registration No.	159
File No.	Drawing No.
Date	Aug. 10, 1937 Scale 1"-1000'

STATE OF WEST VIRGINIA
 Department of Mines
 OIL AND GAS DIVISION
 CHARLESTON

WELL LOCATION MAP
 File No. B00-382 & 48A

+ Denotes location of well on United States Topographic Maps, scale 1 to 62,500, latitude and longitude lines being represented by border lines as shown.

— Denotes one inch spaces on border line of original tracing.