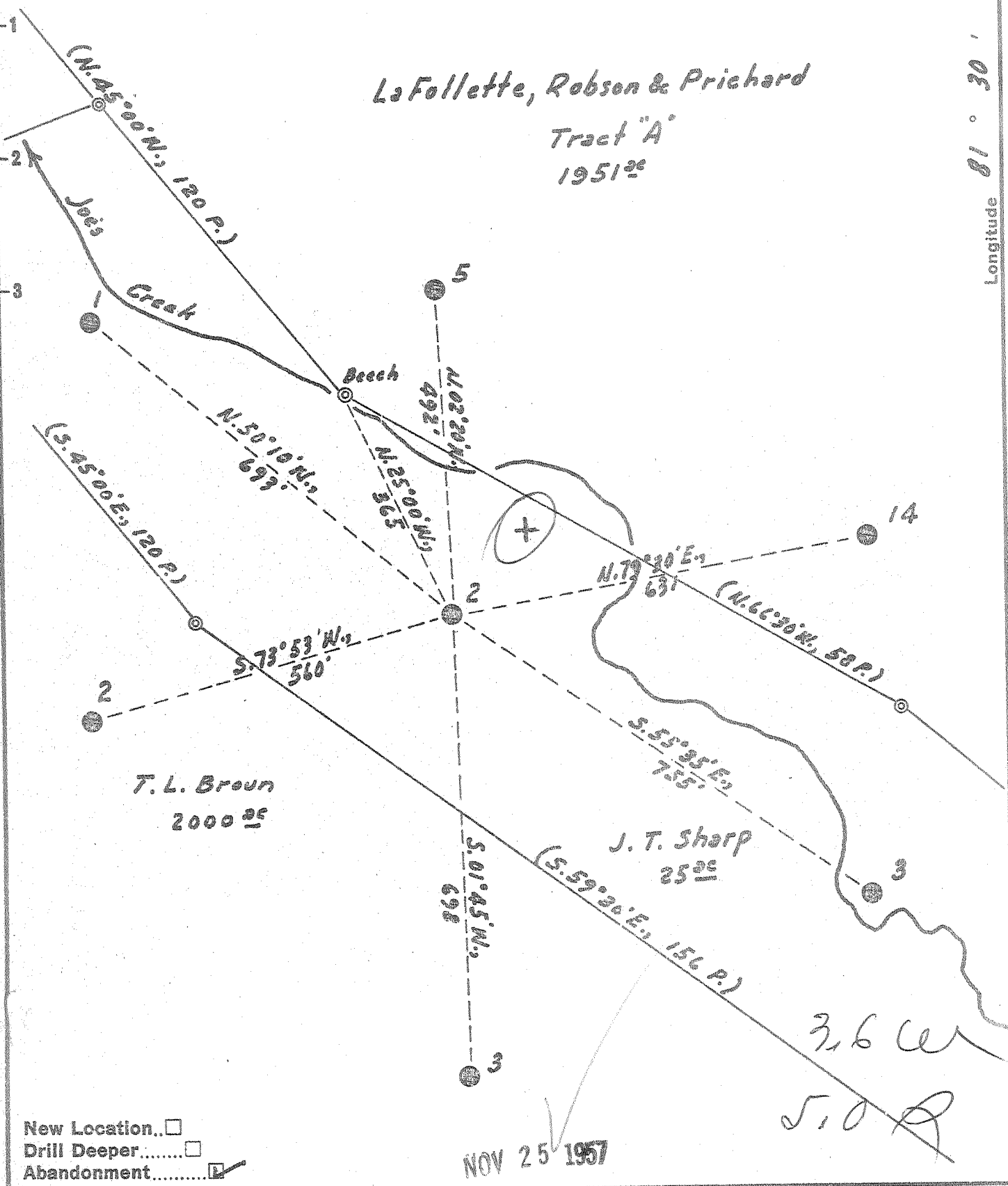


Latitude 8° 10'

Longitude 81° 30'

LaFollette, Robson & Prichard Tract "A" 1951²⁵



New Location...
 Drill Deeper...
 Abandonment...

NOV 25 1957

Company	Pure Oil Co.
Address	Newark, Ohio
Farm	J. T. Sharp
Tract	— Acres 25 Lease No. 249
Well (Farm) No.	2 Serial No. 522
Elevation (Spirit Level)	945
Quadrangle	Peytona
County	Boone District Sherman
Engineer	J. B. Hunter
Engineer's Registration No.	Ohio - 2912
File No.	— Drawing No. —
Date	3/5/57 Scale 1" = 1520

STATE OF WEST VIRGINIA
 DEPARTMENT OF MINES
 OIL AND GAS DIVISION
 CHARLESTON

WELL LOCATION MAP

FILE NO. B00-309-A

+ Denotes location of well on United States Topographic Maps, scale 1 to 62,500, latitude and longitude lines being represented by border lines as shown.

— Denotes one inch spaces on border line of original tracing.