

502302A

WW-7
8-30-06



West Virginia Department of Environmental Protection
Office of Oil and Gas

WELL LOCATION FORM: GPS

API: 47-005-02302 WELL NO.: 221H

FARM NAME: ECA/Yawkey

RESPONSIBLE PARTY NAME: Energy Corporation of America

COUNTY: Boone DISTRICT: Washington

QUADRANGLE: Clothier 7.5'

SURFACE OWNER: Boone East Development

ROYALTY OWNER: Yawkey Foundation II

UTM GPS NORTHING: 4,202,366.01

UTM GPS EASTING: 426,186.61 GPS ELEVATION: 246

The Responsible Party named above has chosen to submit GPS coordinates in lieu of preparing a new well location plat for a plugging permit or assigned API number on the above well. The Office of Oil and Gas will not accept GPS coordinates that do not meet the following requirements:

- Datum: NAD 1983, Zone: 17 North, Coordinate Units: meters, Altitude: height above mean sea level (MSL) – meters.
- Accuracy to Datum – 3.05 meters
- Data Collection Method:

Survey grade GPS : Post Processed Differential

Real-Time Differential

Mapping Grade GPS : Post Processed Differential

Real-Time Differential

- Letter size copy of the topography map showing the well location.**

I the undersigned, hereby certify this data is correct to the best of my knowledge and belief and shows all the information required by law and the regulations issued and prescribed by the Office of Oil and Gas.

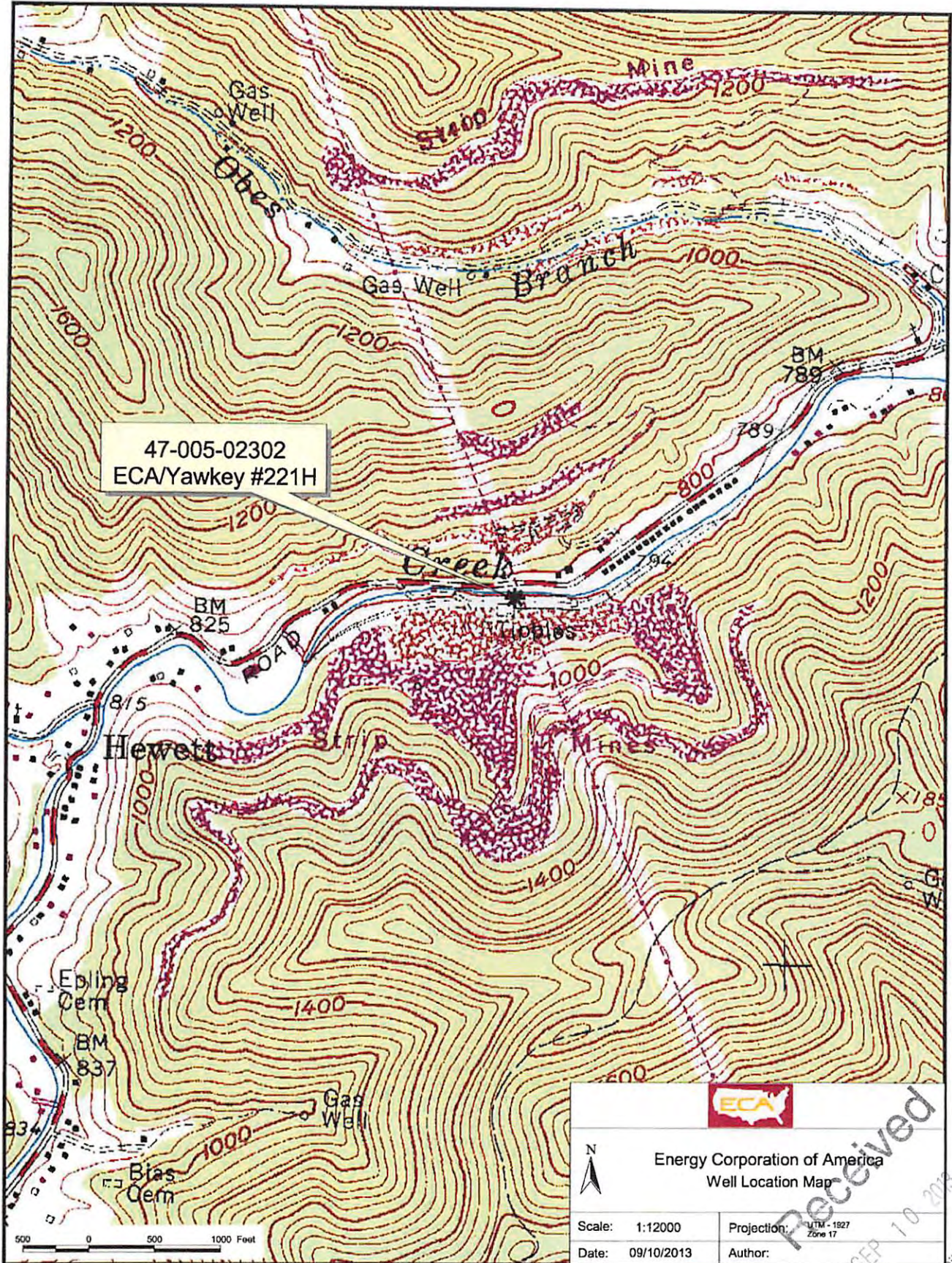
RECEIVED
Office of Oil and Gas

Alma Potbury
Signature

Drilling Engineer
Title

9-10-13 SEP 17 2013

Date
WV Department of
Environmental Protection



47-005-02302
ECA/Yawkey #221H



Energy Corporation of America
Well Location Map



Scale: 1:12000
Date: 09/10/2013

Projection: UTM - 1927
Zone 17
Author:

Received
SEP 10 2013
Office of Oil and Gas
NY Dept. of Environmental Protection