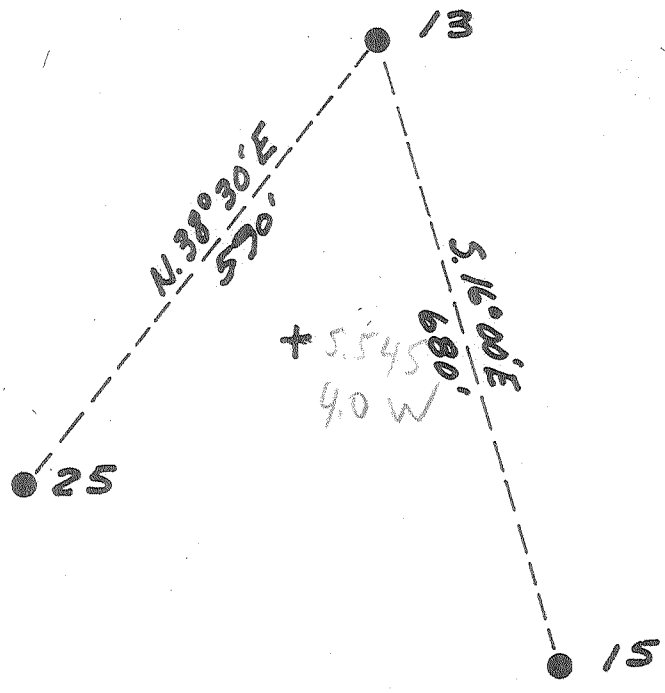


Latitude 38° 10'

Longitude 81° 30'



LaFollette, Robson
& Prichard
5000 ac
Tract "B"

New Location...
 Drill Deeper.....
 Abandonment.....

Company	Pure Oil Co.
Address	Box 311 Olney, Ill.
Farm	L. R. & P.
Tract "B" Acres	5000
Lease No.	224
Well (Farm) No.	13
Serial No.	539
Elevation (Spirit Level)	1489.5
Quadrangle	Peytona
County	Boone
District	Sherman
Engineer	J. B. Hunter
Engineer's Registration No.	Ohio-2912
File No.	
Drawing No.	
Date	4/14/60
Scale	1" = 200'

STATE OF WEST VIRGINIA
 DEPARTMENT OF MINES
 OIL AND GAS DIVISION
 CHARLESTON

WELL LOCATION MAP
 FILE NO. 500-376-A

now 5-2262
 + Denotes location of well on United States Topographic Maps, scale 1 to 62,500, latitude and longitude lines being represented by border lines as shown.

- Denotes one inch spaces on border line of original tracing.



765

STATE OF WEST VIRGINIA
DEPARTMENT OF MINES
OIL AND GAS DIVISION

Quadrangle

Permit No. 376A

WELL RECORD

Oil or Gas Well WI
(KIND)

Company The Pure Oil Company
Address R. 1 - Reed City, Michigan
Farm L. R. & P "B" Acres 5,000
Location (waters) Joe Creek
Well No. 13 Elev. 1189.5
District Sherman County Boone
The surface of tract is owned in fee by LaFollette
Robson & Prichard Address Charleston, W.Va.
Mineral rights are owned by LaFollette, Robson &
Prichard Address Charleston, W.Va.

Drilling commenced 6-23-24
Drilling completed 9-21-24
Date Shot 9-22-24 From 3173 To 3197
With 60 Qts

Open Flow /10ths Water in Inch
/10ths Merc. in Inch
Volume Cu. Ft.
Rock Pressure lbs. hrs.
Oil 119 bbls., 1st 24 hrs.

WELL ACIDIZED

WELL FRACTURED

RESULT AFTER TREATMENT

ROCK PRESSURE AFTER TREATMENT

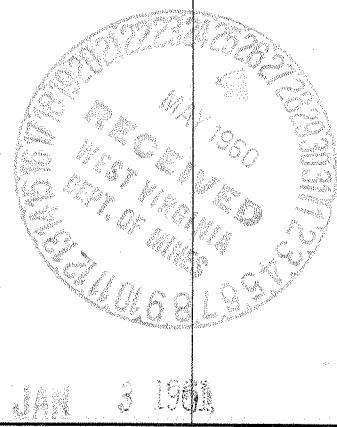
Fresh Water Feet Salt Water Feet

Casing and Tubing	Used in Drilling	Left in Well	Packers
Size			Kind of Packer
16			
13			
10	970'	970'	Size of
8 1/4	1960'	1960'	
6 3/8	2190'	2190'	Depth set
5 3/16			
3			Perf. top
2	3150'	3150'	Perf. bottom
Liners Used			Perf. top
			Perf. bottom

CASING CEMENTED 2" SIZE 3150' No. Ft. 2-1-41 Date

COAL WAS ENCOUNTERED AT 150' FEET 24 INCHES
350 FEET 36 INCHES 400 FEET 36 INCHES
455 FEET 36 INCHES 485 FEET 48 INCHES
610 FEET 36 INCHES 795 FEET 36 INCHES
940 FEET 72 INCHES

Formation	Color	Hard or Soft	Top	Bottom	Oil, Gas or Water	Depth	Remarks
Surface			0	12			
and			12	150			
coal			150	152			
and			152	350			
coal			350	353			
lime			353	380			
and			380	400			
coal			400	403			
lime			403	455			
coal			455	458			
late			458	480			
lime			480	485			
coal			485	489			
late			489	520			
lime			520	600			
and			600	610			
coal			610	613			
lime			613	795			
coal			795	798			
lime			798	835			
and			835	920			
lime			920	940			
coal			940	946			
lime			946	960			
late			960	975			
0" Casing run at 970'							
and			975	1020			
lime			1020	1085			



Formation	Color	Hard or Soft	Top	Bottom	Oil, Gas or Water	Depth Found	Remarks
Slate			1085	1100			
Line			1100	1260			
Sand			1260	1375			
GRAMPUS			1375	1490			
Line			1490	1575			
SALT SAND			1575	1955			
Slate			1955	1965			
8- $\frac{1}{4}$ " casing run at 1960'							
Line			1965	2100			
Slate & Shells			2100	2125			
MAXON SAND			2125	2235			
Red Rock			2235	2275			
Slate & Shells			2275	2305			
Red Rock			2305	2335			
Slate & Shells			2335	2380			
Little Lime			2380	2478			
Pencil Cave			2478	2480			
BIG LIME			2480	2695			
6- $\frac{5}{8}$ " casing run at 2490'							
BIG INJUN SAND			2695	2735			
Line			2735	2800			
Slate & Shells			2800	2900			
WEIR SAND			2900	3000			
Gas from 2920 to 2925							
Line			3000	3139			
Brown Shale			3139	3145			
BUREA SAND			3145	3197			
Oil from 3173 to 3197							
Gas from 3169 to 3197							
Slate			3197	3201 $\frac{1}{2}$			
TOTAL DEPTH							
				3201 $\frac{1}{2}$			

MAY 25 1960

Date _____, 19____

APPROVED THE PURE OIL COMPANY, Owner

By [Signature]
(Title)

District Superintendent