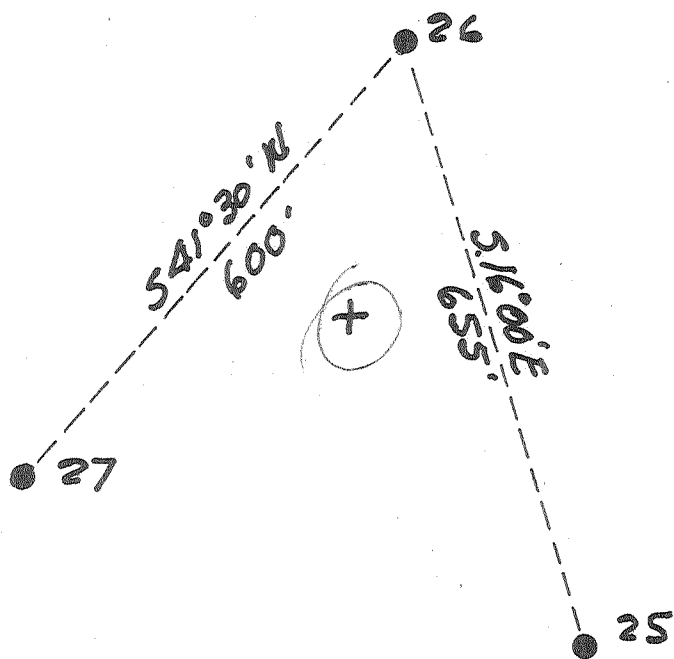


Latitude 38° 10'

Longitude 81° 30'

La Follette, Robson & Prichard  
Tract "B"  
5000<sup>±</sup>



New Location...   
 Drill Deeper.....   
 Abandonment.....

JUN 21 1960

*Y. W.*  
*Tab A*

Company Pure Oil Co.  
 Address Box 311 Olney, Illinois  
 Farm L. R. & P.  
 Tract "B" Acres 5000 Lease No. 224  
 Well (Farm) No. 26 Serial No. 542  
 Elevation (Spirit Level) 1194.0  
 Quadrangle Peyton  
 County Boone District Sherman  
 Engineer J. B. Hunter  
 Engineer's Registration No. Ohio-2912  
 File No. \_\_\_\_\_ Drawing No. \_\_\_\_\_  
 Date 4/14/60 Scale 1"=200'

STATE OF WEST VIRGINIA  
 DEPARTMENT OF MINES  
 OIL AND GAS DIVISION  
 CHARLESTON

WELL LOCATION MAP

FILE NO. 300-378-A

Now 5-2227

+ Denotes location of well on United States  
 Topographic Maps, scale 1 to 62,500, lat-  
 itude and longitude lines being represented  
 by border lines as shown.

- Denotes one inch spaces on border line  
 of original tracing.

LA FOLLETTE, ROBSON & PRICHARD Tract No. 26 - PURE OIL CO., - 300-378-A



773

STATE OF WEST VIRGINIA  
DEPARTMENT OF MINES  
OIL AND GAS DIVISION

Quadrangle Rayford

Permit No. B00-378-A

WELL RECORD

Oil or Gas Well W.O.  
(KIND)

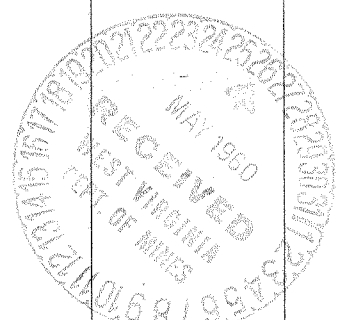
Company The Pure Oil Company  
Address Route #1, Reed City, Michigan  
Farm L. R. & P "B" Acres 5,000  
Location (waters) Joe's Creek  
Well No. 26 Elev. 1194.0  
District Sherman County Boone  
The surface of tract is owned in fee by Lafollette, Robson & Prichard  
Address \_\_\_\_\_  
Mineral rights are owned by Lafollette, Robson & Prichard  
Address Charleston, W. Va.  
Drilling commenced 12-24-27  
Drilling completed 3-14-28  
Date Shot 3-16-28 From 2878'10" To 2901'  
With 70 qts.  
Open Flow /10ths Water in \_\_\_\_\_ Inch  
/10ths Merc. in \_\_\_\_\_ Inch  
Volume \_\_\_\_\_ Cu. Ft.  
Rock Pressure \_\_\_\_\_ lbs. \_\_\_\_\_ hrs.  
Oil \_\_\_\_\_ 9 bbls., 1st 24 hrs.  
WELL ACIDIZED \_\_\_\_\_  
WELL FRACTURED \_\_\_\_\_

Casing and Tubing	Used in Drilling	Left in Well	Packers
Size			Kind of Packer
16			
13			
10	669'	669'	Size of
8 1/4	1682'	1682'	
6 5/8	2214'	2214'	Depth set
5 3/16			
3			Perf. top
2	2863'	2863'	Perf. bottom
Liners Used			Perf. top
			Perf. bottom

CASING CEMENTED 2" SIZE No. Ft. 2863' Date \_\_\_\_\_  
cmts w/ 30 sx. by Halliburton  
COAL WAS ENCOUNTERED AT 87 FEET 24 INCHES  
380 FEET 36 INCHES 634 FEET 60 INCHES  
660 FEET 24 INCHES FEET INCHES

RESULT AFTER TREATMENT \_\_\_\_\_  
ROCK PRESSURE AFTER TREATMENT \_\_\_\_\_  
Fresh Water at 89' Feet Salt Water at 1356 Feet

Formation	Color	Hard or Soft	Top	Bottom	Oil, Gas or Water	Depth	Remarks
Surface			0	87			
Coal			87	89			
Fresh Water			89	89			
Slate			89	95			
Sand			95	155			
Slate			155	275			
Lime			275	350			
Slate			350	380			
Coal			380	383			
Slate			383	400			
Sand			400	412			
Slate			412	460			
Sand			460	475			
Slate			475	525			
Sand			525	622			
Lime			622	634			
Coal			634	639			
Lime			639	660			
Coal			660	662			
Lime			662	840			
Sand			840	880			
Lime			880	950			
Sand			950	1071			
Crampus			1071	1190			
Lime			1190	1230			
Slate			1230	1276			
Salt Sand			1276	1660			
Lime			1660	1720			
Slate			1720	1760			



Water 1356  
AUG 2 1961

(over)

L.R. & P "B" No. 76-

PURE OIL Co

B00-378-A

Formation	Color	Hard or Soft	Top	Bottom	Oil, Gas or Water	Depth Found	Remarks
Red rock			1960	1977			
Line			1977	1995			
Red Rock			1995	2027			
Line			2027	2070			
Pencil cave			2070	2074			
Little line			2074	2198			
Slate			2198	2200			
Big Lime			2200	2409			
Big Injun			2409	2434			
Slate & Shells			2434	2540	Gas	2580-2585	46,080 cu. ft.
air Sand			2540	2704			
Slate & Shells			2704	2847			
Brown Shale			2847	2853	Oil	2880-2901	
Berea Sand			2853	2901			
Slate			2901	2904			
Total Depth				2904			

Date MAY 25 1960, 19

APPROVED THE PURE OIL COMPANY, Owner

By Ray Anderson  
District (Title) Superintendent