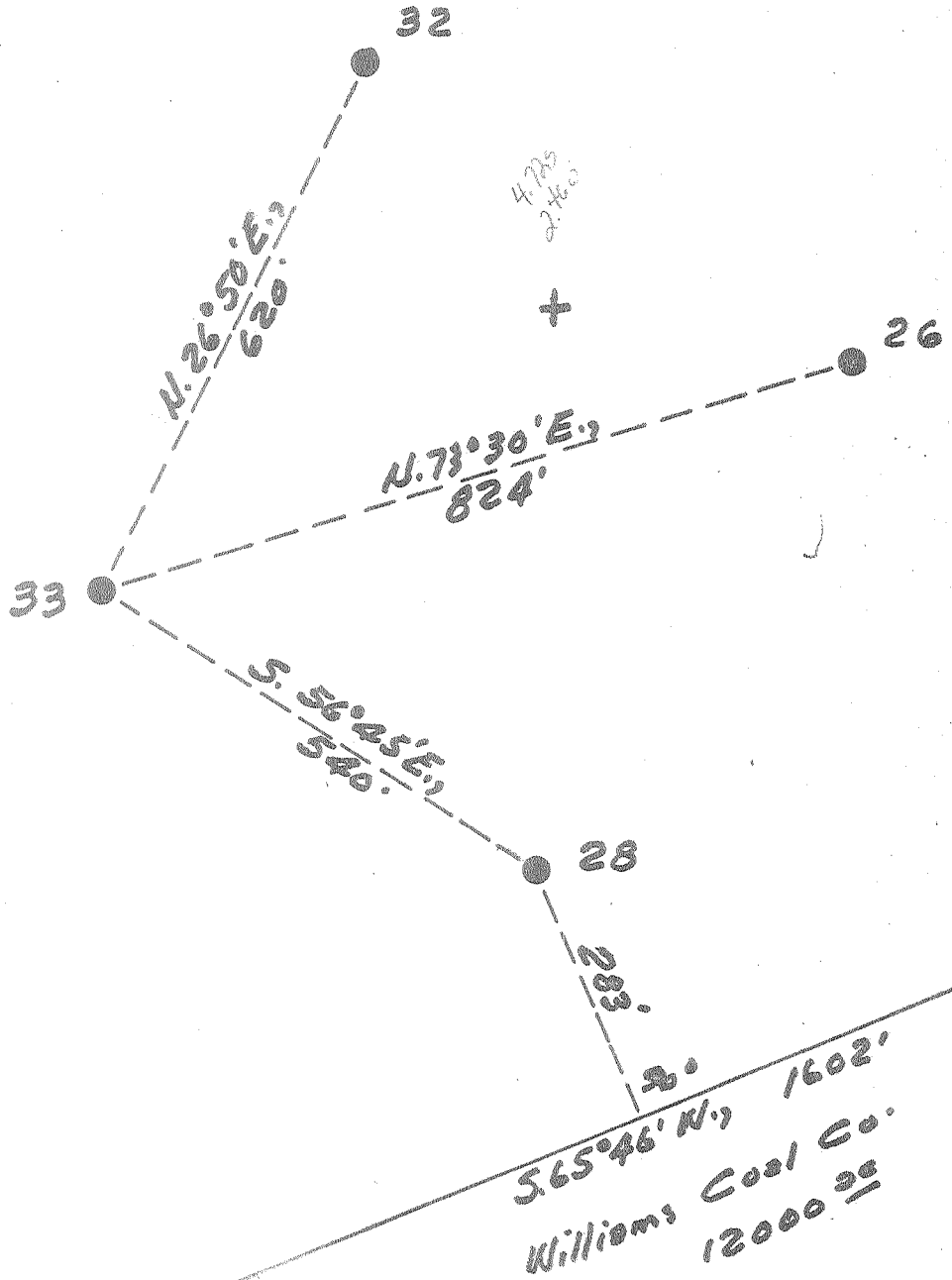


Latitude  $38^{\circ} 10'$

Longitude  $81^{\circ} 30'$

LaFollette, Robson & Prichard  
Tract "A"  
1951 36



New Location   
 Drill Deeper   
 Abandonment

Company Pure Oil Co.  
 Address Newark, Ohio  
 Farm L.R. & P. Tract "A"  
 Tract A Acres 1951 Lease No. 227  
 Well (Farm) No. 33 Serial No. 460  
 Elevation (Spirit Level) 1280.3  
 Quadrangle Peytons  
 County Boone District Sherman  
 Engineer J. B. Hunter  
 Engineer's Registration No. Ohio-2912  
 File No. \_\_\_\_\_ Drawing No. \_\_\_\_\_  
 Date 9-20-55 Scale 1" = 200'

STATE OF WEST VIRGINIA  
 DEPARTMENT OF MINES  
 OIL AND GAS DIVISION  
 CHARLESTON

WELL LOCATION MAP

FILE NO. B00-256-A  
 NOW 5-2192

+ Denotes location of well on United States Topographic Maps, scale 1 to 62,500, latitude and longitude lines being represented by border lines as shown.

= Denotes one inch spaces on border line of original tracing.



686

STATE OF WEST VIRGINIA  
DEPARTMENT OF MINES  
OIL AND GAS DIVISION

Quadrangle Paytona

WELL RECORD

Permit No. B-00:256-A

Oil or Gas Well Oil  
(KIND)

Company The Pure Oil Company  
 Address Box 551, Newark, Ohio  
 Farm LaFollette, Robson & Prichard Tract "A" Acres 1,951  
 Location (waters) \_\_\_\_\_  
 Well No. 33 Elev. 1280.3'  
 District Sherman County Boone  
 The surface of tract is owned in fee by LaFollette, Robson, Prichard, et.al. Address \_\_\_\_\_  
 Mineral rights are owned by Same Address \_\_\_\_\_  
 Drilling commenced 6-30-28  
 Drilling completed 8-25-28  
 Date Shot 8-28-28 From 2970 To 2991  
 With 70 Qts.

Casing and Tubing	Used in Drilling	Left in Well	Packers
Size			Kind of Packer
16			
13	40'	40'	
10	786'	786'	Size of
8 3/4	1644'	1644'	
6 5/8	2275'	2275'	Depth set
5 3/16			
3			Perf. top
2		2980'	Perf. bottom
Liners Used	5 1/2"	522'	Perf. top
			Perf. bottom

Open Flow /10ths Water in \_\_\_\_\_ Inch  
 /10ths Merc. in \_\_\_\_\_ Inch  
 Volume \_\_\_\_\_ Cu. Ft.  
 Rock Pressure \_\_\_\_\_ lbs. \_\_\_\_\_ hrs.  
 Oil 10 bbls., 1st 24 hrs.  
 Fresh water \_\_\_\_\_ feet \_\_\_\_\_ feet  
 Salt water \_\_\_\_\_ feet \_\_\_\_\_ feet

CASING CEMENTED \_\_\_\_\_ SIZE \_\_\_\_\_ No. Ft. \_\_\_\_\_ Date \_\_\_\_\_

COAL WAS ENCOUNTERED AT 50 FEET 48 INCHES  
90 FEET 36 INCHES 300 FEET 48 INCHES  
232 FEET 48 INCHES 465 FEET 48 INCHES  
590 FEET 36 INCHES 758 FEET 60 INCHES  
620 FEET 60 INCHES 780 FEET 48 INCHES

Formation	Color	Hard or Soft	Top	Bottom	Oil, Gas or Water	Depth Found	Remarks
Soil & Gravel			0	39			
Slate			39	50			
Coal			50	54			
Line			54	90			
Coal			90	93			
Slate			93	103			
Line			103	160			
Slate			160	170			
Sand			170	232			
Coal			232	236			
Slate			236	280			
Sand			280	300			
Coal			300	304			
Slate			304	340			
Sand			340	350			
Slate & Line shells			350	410			
Sand			410	465			
Coal			465	469			
Slate			469	480			
Line			480	590			
Coal			590	593			
Slate			593	620			
Coal			620	625			
Slate			625	628			
Sand			628	758			
Slate			758	758			
Coal			758	763			
Slate			763	780			
Coal			780	784			
Slate			784	789			
Line			789	868			
Slate & shells			868	978			
Sand			978	1035			
Slate & shells			1035	1070			
Sand			1070	1185			
Slate			1185	1190			
Grampus			1190	1317			
Slate			1317	1320			
Line			1320	1360			

C

NOV 1955  
 RECEIVED  
 WEST VIRGINIA  
 DEPT. OF MINES

MAR. 28 1957

Formation	Color	Hard or Soft	Top	Bottom	Oil, Gas or Water	Depth Found	Remarks
Slate & shells			1360	1445			
SALT SAND			1445	1638			
Slate			1638	1643			
Lime			1643	1680			
Slate & shells			1680	1750			
Sand			1750	1785			
Slate & shells			1785	1925			
Red Rock			1925	1935			
Slate & shells			1935	1942			
MAXON SAND			1942	2034			
Slate & shells			2034	2050			
Red Rock			2050	2060			
Slate & shells			2060	2090			
Red Rock			2090	2135			
Lime			2135	2142			
Slate			2142	2180			
Little Lime			2180	2225			
Slate			2225	2230			
Lime shells			2230	2239			
Slate			2239	2242			
Lime shells			2242	2255			
Pencil cave			2255	2265			
BIG LIME			2265	2505			
BIG INJUN			2505	2533			
Slate & shells			2533	2689			
WEIR SAND			2689	2793	Gas	2704-2709	
Slate & shells			2793	2936			
Coffee shale			2936	2948			
HEREA SAND			2948	2992	Oil & gas	2965-2992	
Slate			2992	2993			
TOTAL DEPTH				2993			

Date September 3, 1955  
 APPROVED THE PURE OIL COMPANY  
BOX 551, NEWARK, OHIO, Owner

By Guy J. Andersen  
 (Title)  
Division Superintendent