

3,690'

LATITUDE 37-52-30

**Proposed Well No. 14063**  
Dominion Exploration and Production, Inc.  
23,649.70 Acre Lease

LONGITUDE 81-37-30  
5,950'

5/8" REBAR WITH A 2 1/2" ALUMINUM CAP IN CONCRETE ENCLOSED IN A 4" x 36" WHITE PVC PIPE SET 50' SOUTH OF THE RIGHT FORK OF JASPER WORKMAN BRANCH & 40' WEST OF A SMALL DRAIN.

**Notes:**  
Well site coordinates are  
N: 313,264 Lat: 37-51-30.9  
E: 1,815,906 Long: 81-38-15.6  
  
West Virginia Coordinate System of 1927 (South Zone) based upon Differential GPS Measurements.  
Plat orientation, corner and well ties are based upon the grid north meridian.  
Well location references are based upon the magnetic meridian.

SOUTHERN LAND COMPANY, LTD AND DICKINSON PROPERTIES, LTD  
TM 48 PAR 1  
7034.95 ACRES

DICKINSON PROPERTIES, INC.  
TM 44 PAR 1  
187,601 ACRES

Shepard Boone Coal Company LLC  
TM 39 PAR 52  
18,779.52 ACRES

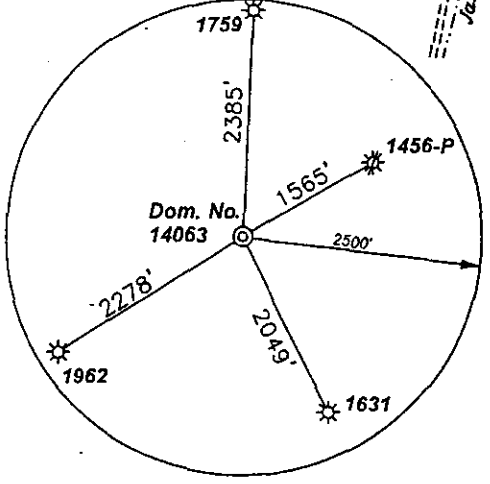
Eastern Assoc. Coal Corp.  
TM 49 PAR 2  
21.83 Acres

220.25 Acre Mineral Tract DB "T" PG 21

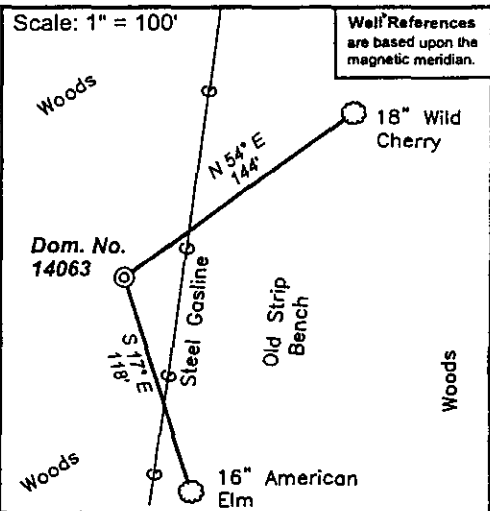
Shepard Boone Coal Company LLC  
TM 39 PAR 52  
18,779.52 ACRES

GRID NORTH

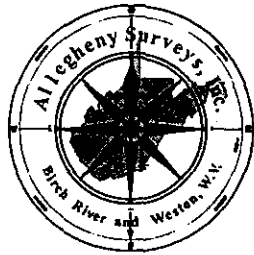
SET STONE (KNOWN AS THE COLLINS STONE) FOUND ON THE HILLSIDE IN THE HEAD OF JASPER WORKMAN BRANCH.



LINE	BEARING	DISTANCE
L1	N 62°30' W	66.00'
L2	S 88°30' W	594.00'
L3	S 71°30' W	172.92'
L4	S 68°30' W	990.00'
L5	N 14°10' W	693.00'
L6	N 09°00' W	189.75'
L7	N 12°00' W	693.00'
L8	N 40°00' E	363.00'
L9	N 77°00' E	165.00'
L10	N 62°30' E	297.00'
L11	N 77°30' E	198.00'
L12	N 73°00' E	412.50'
L13	N 81°30' E	165.00'
L14	S 89°00' E	247.50'
L15	N 89°00' E	363.00'

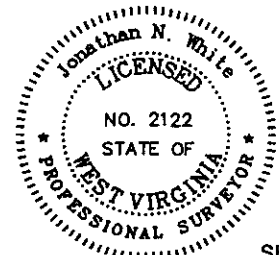


(☉) Denotes Location of Well on United States Topographic Maps



I, the undersigned, hereby certify that this plat is correct to the best of my knowledge and belief and shows all the information required by law and the regulations issued and prescribed by the Department of Environmental Protection.

*Jonathan N. White*  
P.S. 2122



FILE NO: W-02-16-C-04 (94-50)  
DRAWING NO: W-02-04 14063.dwg  
SCALE: 1" = 1000' PUD #  
MINIMUM DEGREE OF ACCURACY: 1/2500  
PROVEN SOURCE OF ELEVATION: DGPS Corrected against WVDEP Base Station (Kanawha City)



STATE OF WEST VIRGINIA  
DIVISION OF ENVIRONMENTAL PROTECTION  
OFFICE OF OIL AND GAS

DATE: January 11, 20 07  
OPERATOR'S WELL NO. 14063  
API WELL NO 47 - 005 - 2160  
STATE COUNTY PERMIT

WELL TYPE:  OIL  GAS  LIQUID INJECTION  WASTE DISPOSAL  
(IF GAS) PRODUCTION:  STORAGE  DEEP  SHALLOW  
LOCATION: ELEVATION: 1700' WATERSHED: Pond Fork QUADRANGLE: Lorado 7.5'  
DISTRICT: Crook COUNTY: Boone  
SURFACE OWNER: Shepard Boone Coal Company LLC ACREAGE: 18,779.52  
OIL AND GAS ROYALTY OWNER: Shepard Boone Coal Company LLC LEASE NO: 80210 ACREAGE: 23,649.70  
PROPOSED WORK:  DRILL  CONVERT  DRILL DEEPER  FRACTURE OR STIMULATE  PLUG OFF OLD FORMATION  
 PERFORATE NEW FORMATION  OTHER PHYSICAL CHANGE IN WELL (SPECIFY)  
 PLUG AND ABANDON  CLEAN OUT AND REPLUG TARGET FORMATION: Devonian Shale ESTIMATED DEPTH: 5135'

WELL OPERATOR: Dominion Exploration & Production, Inc. DESIGNATED AGENT: Gnr. Mrg. WV & Appalachian CBM - Rodney Biggs  
ADDRESS: One Dominion Drive, P.O. Box 1248 Jane Lew, WV 26378 ADDRESS: One Dominion Drive, P.O. Box 1248 Jane Lew, WV 26378

(Mann-Olcum-266) 6-6

OK CAE 1/22/07

800 2160

WR-35  
Rev (5-01)

DATE: 12/10/2007  
API #: 47 005 02160

State of West Virginia  
Department of Environmental Protection  
Office of Oil and Gas

Well Operator's Report of Well Work

Farm name: Shepard Boone Coal Co. Operator Well No.: 14063

LOCATION: Elevation 1700' Quadrangle: Lorado 7.5'

District: Crook County Boone  
Latitude: 5,950 Feet South of 37 Deg. 52 Min. 30 Sec.  
Longitude 3,690 Feet West of 81 Deg. 37 Min. 30 Sec.

Company: Dominion Exploration & Production, Inc

	Casing & Tubing	Used in drilling	Left in well	Cement fill up Cu. Ft.
Address: P O Box 1248 Jane Lew, WV 26378				
Agent: Rodney J. Biggs				
Inspector: Carlos Hively				
Date Permit Issued: 3/20/2007				
Date Well Work Commenced: 11/08/2007	12 3/4"	44'	44'	Sand In
Date Well Work Completed: 11/27/2007				
Verbal Plugging N/A	9 5/8"	264'	264'	465 sks
Date Permission granted on: N/A				
Rotary X Cable Rig	7"	1414'	1414'	245 sks
Total Depth (feet): 5174'				
Fresh Water Depth (ft.): 304'	4 1/2"	5104'	5104'	255 sks
Salt Water Depth (ft.): N/A				
Is coal being mined in area (N/Y)? Y				
Coal Depths (ft.): 131-134', OPEN MINE 185-190', 323-326', 415-419', 572-574'				

OPEN FLOW DATA

UPPER HURON (1) 4930'- 4940'  
BEREA (2) 3648'- 3658'  
Producing formation WEIR (3) Pay zone depth (ft) 3440'- 3450'  
Gas: Initial open flow 46 MCF/d Oil: Initial open flow 0 Bbl/d  
Final open flow 336 MCF/d Final open flow 0 Bbl/d  
Time of open flow between initial and final tests 12 Hours  
Static rock Pressure 440 psig (surface pressure) after 12 Hours  
DENMAR (4) 3104'- 3114'  
Second producing formation UNION (5) Pay zone depth (ft) 2904'- 2910'  
Gas: Initial open flow \* MCF/d Oil: Initial open flow \* Bbl/d  
Final open flow \* MCF/d Final open flow \* Bbl/d  
Time of open flow between initial and final tests \* Hours  
Static rock Pressure \* psig (surface pressure) after \* Hours

\*Commingled with previous formations

NOTE: ON BACK OF THIS FORM PUT THE FOLLOWING: 1). DETAILS OF PERFORATED INTERVALS, FRACTURING OR STIMULATING, PHYSICAL CHANGE, ETC. 2). THE WELL LOG WHICH IS A SYSTEMATIC DETAILED GEOLOGICAL RECORD OF ALL FORMATIONS, INCLUDING COAL ENCOUNTERED BY THE WELLBORE.

Signed: Rodney J. Biggs  
By: Rodney J. Biggs  
Date: 12/13/07

RECEIVED  
Office of Oil & Gas  
FEB 01 2008 DEC 17 2007  
WV Department of Environmental Protection

300 2160

11/27/07

PERFORMED 5 STAGE FRAC W/ AND ENERGY.

UPPER HURON (1) 4930'- 4940' (21 HOLES) - 75 Q FOAM FRAC - 9,567# 20/40, 114 BBL CLEAN FLUID, 259,600 SCF N2, BDP 3600#, ATP 1854#, AIR 24.7 BPM, PUMPED 500 GAL OF 15% HCL (DROPPED 3" FRAC BALL) ON FLUSH.  
 BERA (2) 3648'- 3658' (21 HOLES) - 75 Q FOAM FRAC - 9,698# 20/40 SAND, 127 BBL CLEAN FLUID, 256,900 SCF N2, BDP 1730#, ATP 1730#, AIR 24.9 BPM, PUMPED 500 GAL OF 15% HCL (DROPPED 3.250" FRAC BALL) ON FLUSH.  
 WEIR (3) 3440'- 3450' (21 HOLES) - 75 Q FOAM FRAC - 20,430# 20/40 SAND, 151 BBL CLEAN FLUID, 281,100 SCF N2, BDP 1600#, ATP 1528#, AIR 23 BPM, PUMPED 500 GAL OF 15% HCL (DROPPED 3.375" FRAC BALL) ON FLUSH.  
 DENMAR (4) 3104'- 3114' (10 HOLES) - ACID/N2 ASSIST - 1000 GAL OF 28% HCL, 94 BBL CLEAN FLUID, 28,800 SCF N2, BDP 2806#, ATP 2413#, AIR 9.1 BPM, PUMPED 500 GAL OF 15% HCL (DROPPED 3.75" FRAC BALL) ON FLUSH.  
 UNION (5) 2904'- 2910' (10 HOLES) - ACID/N2 ASSIST - 1000 GAL OF 28% HCL, 70 BBL CLEAN FLUID, 44,300 SCF N2, BDP 1828#, ATP 2317#, AIR 9.9 BPM, ISIP 2480#, 3 MIN ISIP 2365#.

Fill	0	15	Sandstone	1309	1801
Shale	15	35	Shale	1801	1971
Sandstone	35	92	RR	1971	1983
Shale	92	131	Shale	1983	2033
Coal	131	134	Ravencliff	2033	2207
Shale	134	185	Shale	2207	2237
Open Mine	185	190	Avis	2237	
Shale	190	225			
Sandstone	225	280			
Sand/Shale	280	323			
Coal	323	326			
Sandy Shale	326	415			
Coal	415	419			
Sandy Shale	419	572			
Coal	572	574			
Sandy Shale	574	1309			

GAMMA RAY / FORMATION TOPS					
DEPI # 14063		047-005-02160			
			TOP	BASE	
UPPER MAXTON			2434	2550	
LOWER MAXTON			2668	2745	
LITTLE LIME			2754	2902	
BIG LIME			2902	3162	
PRICE FORMATION			3162	3650	
WEIR SAND			3258	3290	
SUNBURY SHALE			3610	3650	
BEREA			3650	3655	
GORDON			3850	3890	
UPPER HURON			4786	4950	
LTD				5202	

FEB 01 2008