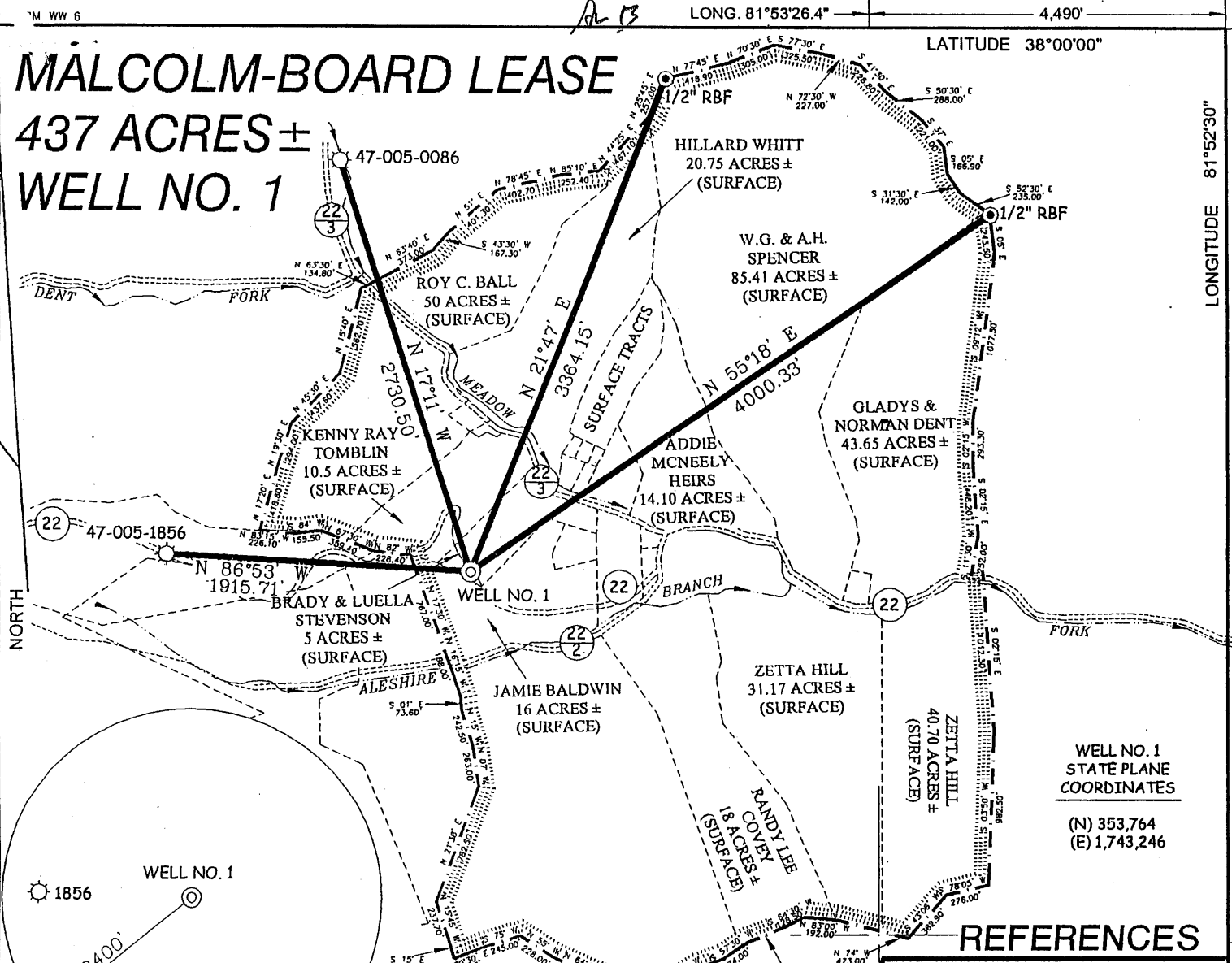


MALCOLM-BOARD LEASE

437 ACRES ± WELL NO. 1



WELL NO. 1
STATE PLANE
COORDINATES
(N) 353,764
(E) 1,743,246

REFERENCES

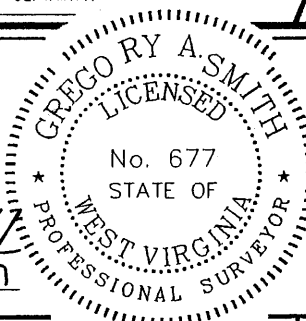
NOTES ON SURVEY

1. TIES TO WELLS AND CORNERS ARE BASED ON GRID NORTH FOR THE WV STATE PLANE COORDINATE SYSTEM SOUTH ZONE NAD '27.
2. TIES TO REFERENCES ARE BASED ON MAGNETIC NORTH 09/12/05.
3. LEASE BOUNDARY SHOWN HEREON TAKEN FROM A DEED DATED THE 31ST DAY OF AUGUST, 1908 AND RECORDED IN DEED BOOK 7 PAGE 473.
4. SURFACE OWNER AND ADJOINER INFORMATION TAKEN FROM THE ASSESSOR AND COUNTY CLERK RECORDS OF BOONE COUNTY IN SEPTEMBER, 2005.
5. WELL LAT./LONG. (NAD'27) ESTABLISHED BY DGPS (SUBMETER MAPPING GRADE).
6. DUE TO POOR DEED DESCRIPTIONS SLS RECOMMENDS EAEC NOTIFY ALL SURFACE OWNERS INSIDE THE LEASE AREA AND SURROUNDING SURFACE TRACTS BEFORE ANY CONSTRUCTION OCCURS. SURFACE TRACTS ARE SHOWN BASED ON TAX MAPS AND CANNOT BE MAPPED WITH ANY CERTAINTY.



I THE UNDERSIGNED, HEREBY CERTIFY THAT THIS PLAT IS CORRECT TO THE BEST OF MY KNOWLEDGE AND BELIEF AND SHOWS ALL THE INFORMATION REQUIRED BY LAW AND THE REGULATIONS ISSUED AND PRESCRIBED BY THE DIVISION OF ENVIRONMENTAL PROTECTION.

P.S. 677 *Gregory A. Smith*



(+) DENOTES LOCATION OF WELL ON UNITED STATES TOPOGRAPHIC MAPS.

DATE OCTOBER 17, 20 05
 OPERATORS WELL NO. Malcolm/Board #1
 API WELL NO. 47-005-02022
 STATE COUNTY PERMIT

MINIMUM DEGREE OF ACCURACY 1/2500 FILE NO. 5849P1(189-32)
 PROVEN SOURCE OF ELEVATION DGPS (SUBMETER MAPPING GRADE) SCALE 1" = 1000'

STATE OF WEST VIRGINIA
 DIVISION OF ENVIRONMENTAL PROTECTION
 OFFICE OF OIL AND GAS



WELL TYPE: OIL GAS LIQUID INJECTION WASTE DISPOSAL IF "GAS" PRODUCTION STORAGE DEEP SHALLOW

LOCATION: ELEVATION 1,167' WATERSHED ALESHIRE BRANCH & MEADOW FORK

DISTRICT WASHINGTON COUNTY BOONE QUADRANGLE HENLAWSON 7.5'

SURFACE OWNER BRADY & LUELLA STEVENSON ACREAGE 5 ±

ROYALTY OWNER JACK W. BLAIR ET AL LEASE ACREAGE 437 ±

PROPOSED WORK: DRILL CONVERT DRILL DEEPER REDRILL FRACTURE OR STIMULATE PLUG OFF OLD

FORMATION PERFORATE NEW FORMATION PLUG AND ABANDON CLEAN OUT AND REPLUG OTHER

PHYSICAL CHANGE IN WELL (SPECIFY) _____ TARGET FORMATION Line, Berca, D. shale
 ESTIMATED DEPTH 3947'

WELL OPERATOR EASTERN AMERICAN ENERGY CORP. DESIGNATED AGENT JOHN M. PALETTI

ADDRESS BOX 820 GLENVILLE, WV 26351 ADDRESS BOX 820 GLENVILLE, WV 26351

DEC 02 2005

COUNTY NAME Boone PERMIT 2022

State of West Virginia
Division of Environmental Protection
Section of Oil and Gas
Well Operator's Report of Well Work

Farm name: **Stevenson, Bradley & Luella** Operator Well No.: MALCOLM/BOARD #1

LOCATION: Elevation: 1167' Quadrangle: Smithburg 7.5'
District: Washington County: Boone
Latitude: 39°15'42.5"
Longitude: 80°43'42.9"

Company: EASTERN AMERICAN ENERGY CORPORATION
Box 820
Glennville, WV 26351

Agent: John Paletti

Inspector: Carlos Hively
Permit Issued: 12/01/2005
Well work commenced: 12/09/2005
Well work completed: 1/14/2006
Verbal plugging
Permission granted on:

Casing & Tubing	Used in Well	Left in Well	Cement Fill Up Cu. Ft.
13-3/8"	40'	40'	
9-5/8"	280'	280'	135
7"	1522'	1492'	322
4-1/2"	3947'	3907'	314

Rotary X Cable ___ Rig
Total Depth (feet): 3947'
Fresh water depths (ft) 100'
Salt-water depths (ft) 1077'
Is coal being mined in area? (Y/N) Yes
Coal Depths (ft) 100'-103'

RECEIVED
Office of Oil & Gas

APR 21 2006

WV Department of
Environmental Protection

OPEN FLOW DATA

Gas: Initial open flow na MCF/d Oil: Initial open flow 0 Bbl/d
Final open flow 189 MCF/d Final open flow 0 Bbl/d
Time of open flow between initial and final tests 0 Days
Static rock pressure na psi (surface pressure) after 0 Hours

1st Producing Formation Lower Huron

Pay zone depth (ft) 3404'-3820'

NOTE: ON BACK OF THIS FORM PUT THE FOLLOWING: 1) DETAILS OF PERFORATED INTERVALS, FRACTURING OR STIMULATING, PHYSICAL CHANGE, ETC. 2) THE WELL LOG WHICH IS A SYSTEMATIC DETAILED GEOLOGICAL RECORD OF ALL FORMATIONS, INCLUDING COAL ENCOUNTERED BY THE WELLBORE.

John M. Paletti

John M. Paletti, AGENT
For: EASTERN AMERICAN ENERGY CORPORATION

By: Designated Agent
Date: Mar 10, 2006

APR 28 2006

Boo 2022

STAGE ONE: Lower Huron
50 Shots (3821'-3404')
Treat with 90Q Foam, 180.6 Mcf N2, 270 bbl water and 75,400# 20/40 sand

APR 28 2006

MALCOLM/BOARD #1 WR35

FORMATION, COLOR, HARD OR SOFT	TOP FEET	BOTTOM FEET	<u>REMARKS</u>
			Including indication of all fresh & salt water coal, oil & gas
Sub	0	10	
Fill	10	15	
Shale & sandstone	15	1318	
Maxton	1318	1354	
Shale and sandstone	1354	1476	
Little Lime	1476	1540	
Shale and sandstone	1540	1558	
Big Lime	1558	1737	
Shale and sandstone	1737	1771	
Injun	1771	1796	
Shale and sandstone	1796	2230	
Sunbury	2230	2250	
Berea	2250	2278	
Shale and sandstone	2278	3404	
Lower Huron	3404	3820	

APR 28 2006

B00 2022