

WW-7  
8-30-06



West Virginia Department of Environmental Protection  
Office of Oil and Gas  
**WELL LOCATION FORM: GPS**

API: 47-005-02008 WELL NO.: 14419  
 FARM NAME: Bank One Trustees for Shepard Heirs  
 RESPONSIBLE PARTY NAME: CNX Gas Company  
 COUNTY: Boone DISTRICT: Crook  
 QUADRANGLE: Pilot Knob, WV  
 SURFACE OWNER: Bank One Trustees for Shepard Heirs  
 ROYALTY OWNER: Bank One Trustees for Shepard Heirs  
 UTM GPS NORTHING: 4,182,173 m  
 UTM GPS EASTING: 448,744 m GPS ELEVATION: 509 1677'

The Responsible Party named above has chosen to submit GPS coordinates in lieu of preparing a new well location plat for a plugging permit or assigned API number on the above well. The Office of Oil and Gas will not accept GPS coordinates that do not meet the following requirements:

1. Datum: NAD 1983, Zone: 17 North, Coordinate Units: meters, Altitude: height above mean sea level (MSL) – meters.
2. Accuracy to Datum – 3.05 meters
3. Data Collection Method:

Survey grade GPS  : Post Processed Differential

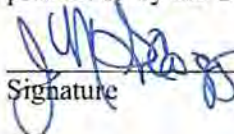
Real-Time Differential

Mapping Grade GPS  : Post Processed Differential

Real-Time Differential

4. Letter size copy of the topography map showing the well location.

I the undersigned, hereby certify this data is correct to the best of my knowledge and belief and shows all the information required by law and the regulations issued and prescribed by the Office of Oil and Gas.

  
Signature

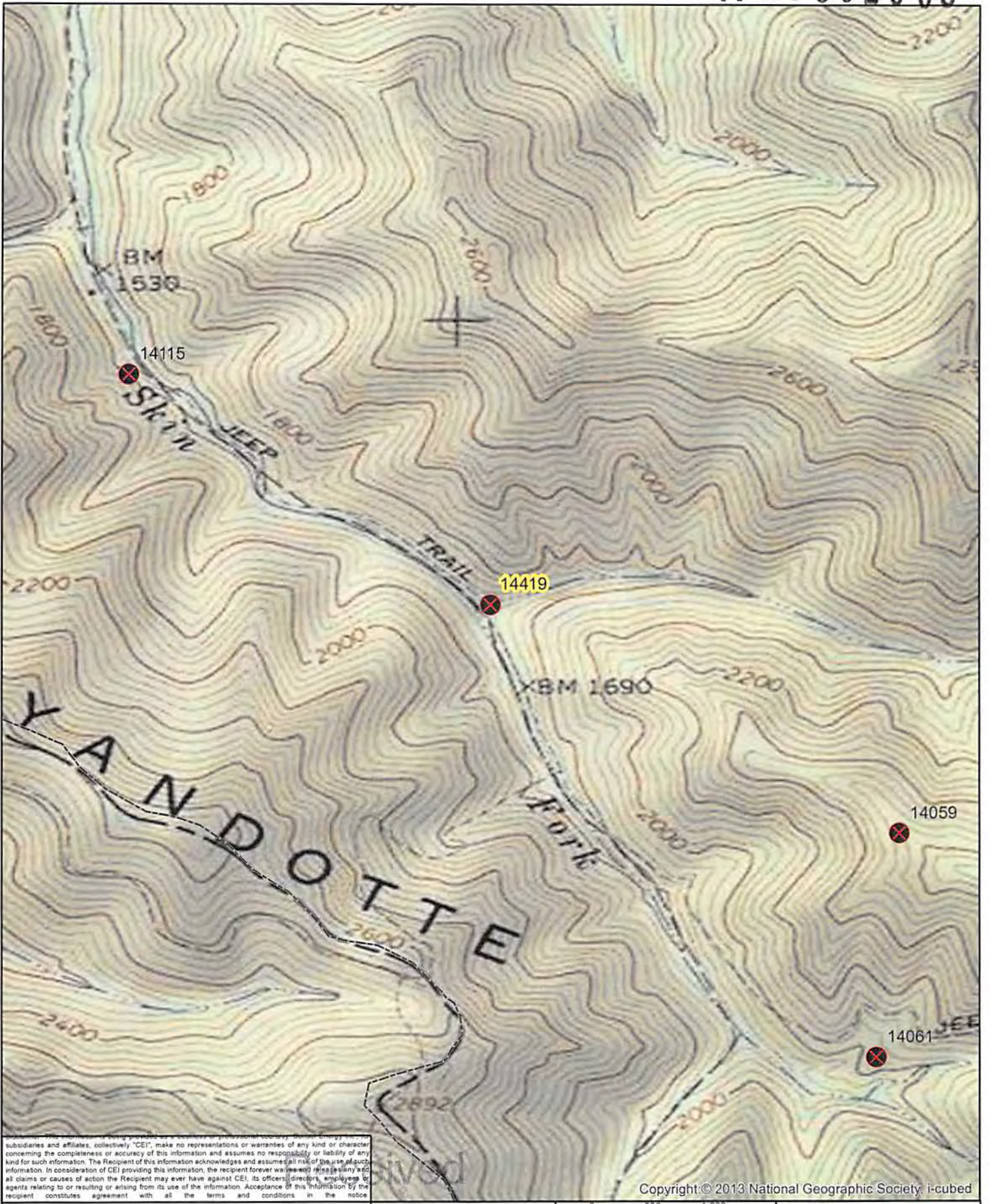
Prod. Coord.  
Title

4/21/14  
Date

Received

APR 21 2014

Office of Oil and Gas  
Dept. of Environmental Protection



subsidiaries and affiliates, collectively "CEI", make no representations or warranties of any kind or character concerning the completeness or accuracy of this information and assumes no responsibility or liability of any kind for such information. The Recipient of this information acknowledges and assumes all risk of the use of such information. In consideration of CEI providing this information, the recipient forever and irrevocably and to all claims or causes of action the Recipient may ever have against CEI, its officers, directors, employees or agents relating to or resulting or arising from its use of the information. Acceptance of this information by the recipient constitutes agreement with all the terms and conditions in the notice

Copyright © 2013 National Geographic Society, i-cubed

APR - 2014

Office of Oil and Gas

Dept. of Environmental Protection



0 500 1,000 Feet	
Date: 1/24/2014	Prepared By: KK
Revisions:	Approved By: BS
This map is property of CONSOL Energy Inc. and contains information that is proprietary and confidential in nature and may not be copied or reproduced without prior written consent.	

**CONSOL ENERGY**

PROPOSED PLUGGING  
WELL NUMBER 14419  
API# 47-005-02008  
GENERAL LOCATION MAP