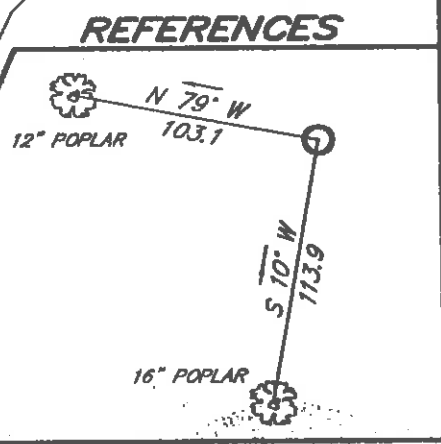
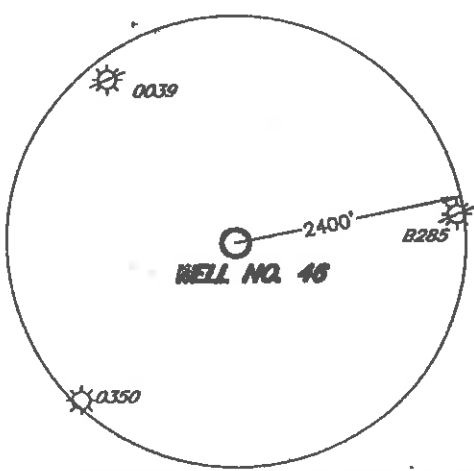
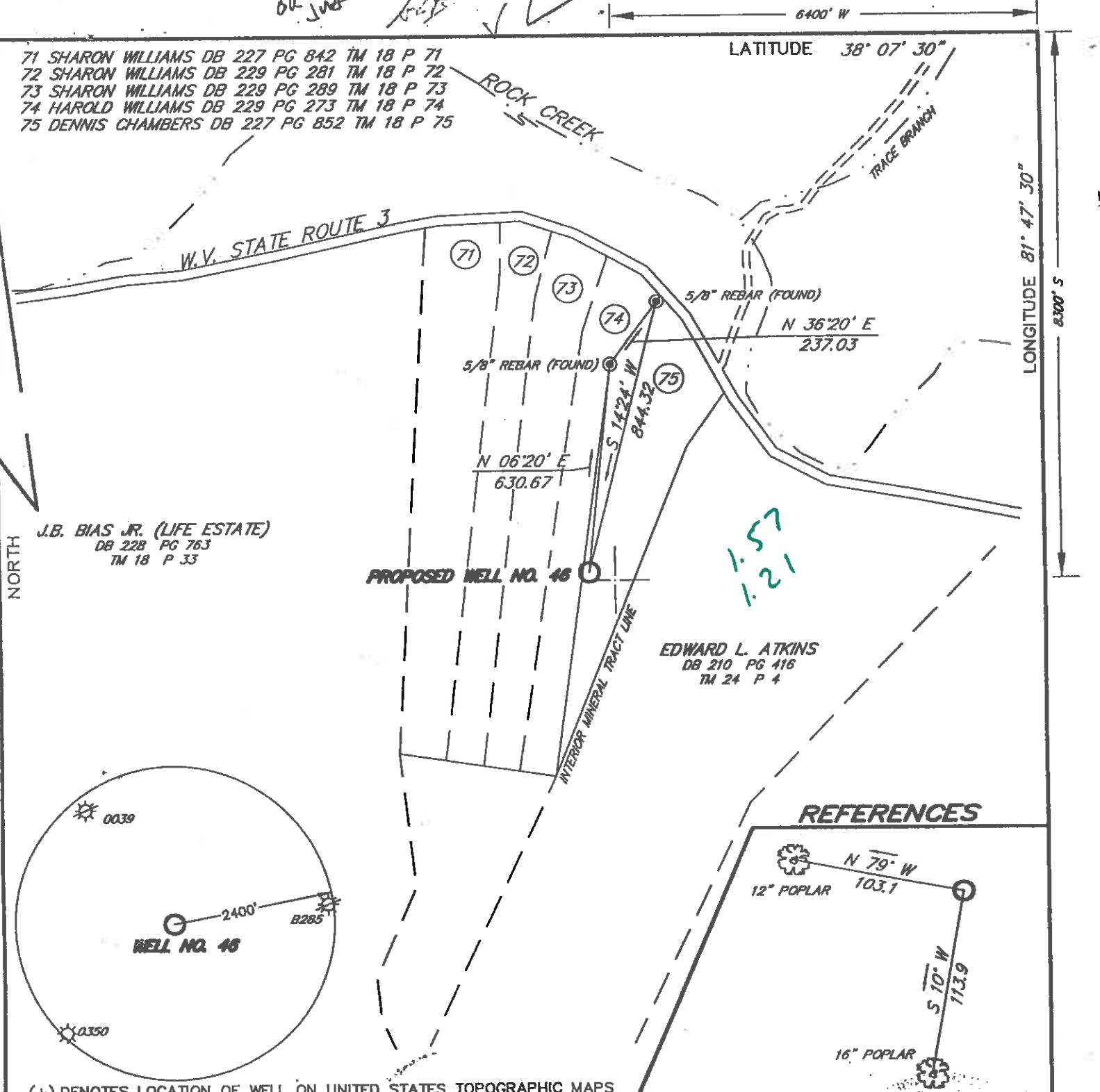


71 SHARON WILLIAMS DB 227 PG 842 TM 18 P 71
 72 SHARON WILLIAMS DB 229 PG 281 TM 18 P 72
 73 SHARON WILLIAMS DB 229 PG 289 TM 18 P 73
 74 HAROLD WILLIAMS DB 229 PG 273 TM 18 P 74
 75 DENNIS CHAMBERS DB 227 PG 852 TM 18 P 75

LATITUDE 38° 07' 30"



(+) DENOTES LOCATION OF WELL ON UNITED STATES TOPOGRAPHIC MAPS

FILE NO. 01044
 DRAWING NO. _____
 SCALE 1" = 400'
 MINIMUM DEGREE OF ACCURACY 1:2500
 PROVEN SOURCE OF ELEVATION GPS OBSERVATION

I THE UNDERSIGNED, HEREBY CERTIFY THAT THIS PLAT IS CORRECT TO THE BEST OF MY KNOWLEDGE AND BELIEF AND SHOWS ALL THE INFORMATION REQUIRED BY LAW AND THE REGULATIONS ISSUED AND PRESCRIBED BY THE DEPARTMENT OF ENVIRONMENTAL PROTECTION.
 (SIGNED) _____
 R.P.E. _____ L.L.S. 1956

PLACE SEAL HERE

STATE OF WEST VIRGINIA
 DEPARTMENT OF ENVIRONMENTAL PROTECTION
 OIL AND GAS DIVISION



DATE JUNE 15, 20 01
 OPERATOR'S WELL NO. ALLEN/PRYOR NO. 46
 API WELL NO. _____

47 - 005 - 01770
 STATE COUNTY PERMIT

WELL TYPE: OIL ___ GAS X LIQUID INJECTION ___ WASTE DISPOSAL ___
 (IF "GAS,") PRODUCTION X STORAGE ___ DEEP ___ SHALLOW ___
 LOCATION: ELEVATION 967.3 WATERSHED ROCK CREEK
 DISTRICT SCOTT COUNTY BOONE

SURFACE OWNER DENNIS RAY CHAMBERS ACREAGE 5.22
 OIL & GAS ROYALTY OWNER CABOT OIL AND GAS LEASE ACREAGE 7357.5
 LEASE NO. _____

PROPOSED WORK: DRILL X CONVERT ___ DRILL DEEPER ___ REDRILL ___ FRACTURE OR STIMULATE X PLUG OFF OLD FORMATION ___ PERFORATE NEW FORMATION ___ OTHER PHYSICAL CHANGE IN WELL (SPECIFY) _____

PLUG AND ABANDON ___ CLEAN OUT AND REPLUG ___
 TARGET FORMATION SHALE ESTIMATED DEPTH 4375'
 WELL OPERATOR CABOT OIL & GAS CORPORATION DESIGNATED AGENT JOHN ABSHIRE
 ADDRESS 900 LEE STREET E. SUITE 1500 CHARLESTON, WV 25301 ADDRESS 900 LEE STREET E. SUITE 1500 CHARLESTON, WV 25301

AUG 3 2001

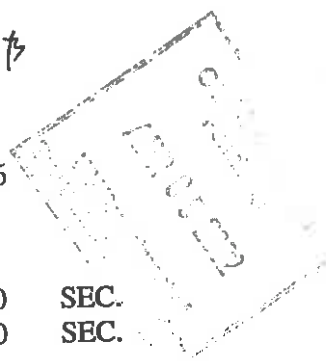
COUNTY NAME BOONE
 PERMIT 1770

6-6 236

FORM WW-6

State of West Virginia
Division of Environmental Protection
Section of Oil and Gas
Well Operator's Report of Well Work

Arb



Farm name: Dennis Ray Chambers Operator Well No.: Allen & Pryor #46

LOCATION: Elevation: 967' Quadrangle: Madison
District: Scott County: Boone
Latitude: 8,300 feet South of 38 DEG. 7 MIN. 30 SEC.
Longitude: 6,400 feet West of 81 DEG. 47 MIN. 30 SEC.

Company: Cabot Oil & Gas Corporation
900 Lee Street East, Suite 500
Charleston, WV 25301

Agent: John Abshire
Inspector: Rick Campbell
Permit Issued: 8/27/01
Well Work Commenced: 10/26/01
Well Work Completed: 12/21/01
Verbal Plugging
Permission granted on:
Rotary Cable

Casing & Tubing Size	Used in Drilling	Left in Well	Cement Fill up Cu. Ft.
16"	36'	36'	
9 5/8"	760'	760'	260 sks
7"	1299'	1299'	230 sks
4 1/2" Stage Tool	@ 2195'	4366'	109 sks St 1 84 sks St 2

Total Depth (feet) 4385'
Fresh Water Depths (ft) 62', 77', 559', 856'
Salt Water Depths (ft)
Is coal being mined in area (Y / N)? Y
Coal Depths (ft) 180'-182', 335'-338', 480'-482', 619'-621', 680'-683', 811'-813'

OPEN FLOW DATA

Producing formation DEVONIAN SHALE Pay zone depth (ft) 3416' - 3616'
4024' - 4238'
Gas: Initial open flow TSTM MCF/d Oil: Initial open flow 0 Bbl/d
Final open flow 127 MCF/d Final open flow 0 Bbl/d
Time of open flow between initial and final tests 4 Hours
Static rock pressure 250 psig (surface pressure after 240 Hours)

Second producing formation BEREA BIG LIME Pay zone depth (ft) 1972' - 1976'
1440' - 1491'
Gas: Initial open flow TSTM MCF/d Oil: Initial open flow 0 Bbl/d
Final open flow 127 MCF/d Final open flow 0 Bbl/d
Time of open flow between initial and final tests 4 Hours
Static rock pressure 250 psig (surface pressure after 240 Hours)

NOTE: ON BACK OF THIS FORM PUT THE FOLLOWING: 1). DETAILS OF PERFORATED INTERVALS, FRACTURING OR STIMULATING, PHYSICAL CHANGE, ETC. 2). THE WELL LOG WHICH IS A SYSTEMATIC DETAILED GEOLOGICAL RECORD OF ALL FORMATIONS, INCLUDING COAL ENCOUNTERED BY THE WELLBORE.

For: CABOT OIL & GAS CORPORATION APR 12 2002
By: *Ray Prudnick* Operations Manager
Date: 2-2-02

800 1770

Perforate Devonian Shale using 3 1/8" HSC (12 gram, .33 charges) at 4238', 4237, 4236, 4182', 4181, 4152, 4151, 4150, 4141, 4136, 4127, 4126, 4106, 4105, 4104, 4103, 4094', 4093, 4090, 4089, 4088, 4087, 4086, 4081, 4080, 4079, 4069, 4068, 4049, 4048, 4041, 4040, 4025, 4024, (34 total holes). Dropped 30 perf balls in 500 gal. 15% HCL acid to breakdown formation. Over-displaced with additional 250 gal 15% HCL acid with N2. Performed 90-87 Q FF on stage1 (Devonian Shale) as follows: Breakdown: 1813 psig, ISIP: 1300 psig, Avg Treating: 2600 psig, Max Treating: 2638 psig, Final ISIP: 1900 psig, 5-Min ISIP: 1501 psig, 10-Min ISIP: 1420 psig. Avg N2 Rate: 7000 scfm, Total N2 Vol: 548,200 scf. Total Slurry Vol: 178.6 bbl, Total Fluid Vol: 128.2 bbl, Avg Inj Rate: 60 bpm, Max Inj Rate: 61 bpm, Max Prop Con: 15.8 ppg, Total Prop: 46,784# 20/40 sand.

Perforated 2nd Stage - Devonian Shale using select fire 3 1/8" HSC at 1 SPF from 3616', 3612, 3608, 3607, 3592', 3591, 3588', 3583', 3571', 3570', 3559', 3558', 3557', 3550', 3534', 3533', 3531', 3530', 3528', 3527', 3511', 3506', 3502', 3501', 3500', 3475', 3474', 3471', 3467', 3466', 3458', 3454', 3450', 3418', 3417', 3416'. (36 total holes). Dropped 30 perf balls in 500 gal HCL acid, over-displace with 250 additional gal of 15% HCL with N2. Performed 90-87 Q FF on stage 2 (Devonian Shale) as follows: Breakdown: 1753 psig, ISIP: 1250 psig, Avg Treating: 2450 psig, Max Treating: 2600 psig, Final ISIP: 1750 psig, 5-Min ISIP: 1360 psig, 10-Min ISIP: 1282 psig. Avg N2 Rate: 7000 scfm, Total N2 Vol: 526,700 scf, Total Slurry Vol: 183.5 bbl, Total Fluid Vol: 132.7 bbl, Avg Inj Rate: 60 bpm, Max Inj Rate: 61 bpm, Max Prop Con: 16.9 ppa, Total Prop: 47,106# 20/40 sand. SMFP at 3644' KB.

Perforated Berea section using 3 1/8" HSC (12 gram, .33charges) at 2 SPF from 1980'-1984' (9 holes) and 1972'-1976' (9 holes). Set SMFP. Pump 2 bbls of acid and drop frac ball. Breakdown formation with additional 10 bbls 15% HCL acid. Performed 75 Q FF on stage 3 (Berea) as follows: Breakdown: 3200 psig, ISIP: 2100 psig, Avg Treating: 2950 psig, Max Treating: 3227 psig, Final ISIP: 2250 psig, 5-Min ISIP: 2138 psig, 10-Min ISIP: 2138 psig. Avg N2 Rate: 6000 scfm, Total N2 Vol: 391,000 scf, Total Slurry Vol: 208.9 bbl, Total Fluid Vol: 175.6 bbl, Avg Inj Rate: 20.6 bpm, Max Inj Rate: 21 bpm, Max Prop Con: 10.4 ppg, Total Prop: 30,988# 20/40 sand. SMFP at 2010' KB.

Perforated Big Lime section with 3 1/8" HSC (12 gram,.33 charges) from 1461'-64' (7 holes) and 1440'-50' (21 holes). Set LMFP. Drop frac ball in 250 gal gelled 15% acid, flushed with treated water. Performed DGA 15% acid frac on stage 4 (Big Lime) as follows: Breakdown: 3450 psig, Max Treating: 3332 psig, Final ISIP: 1600 psig, 5-Min ISIP: 1409 psig. Total Slurry Vol: 67.9 bbl, Total Fluid Vol: 94.3 bbl, Avg Inj Rate: 6 bpm, Max Inj Rate: 6.1 bpm. LMFP at 1490' KB.

FORMATION	TOP	BOTTOM	REMARKS
Breathitt Fm	Surface	390	
Lee Fm (Salt Sand)	390	1082	
Pennington Fm	1082	1224	
Little Lime	1224	1266	
Big Lime	1266	1465	
Injun	1465	1540	
Borden	1540	1952	
Coffee Shale	1952	1969	
Berea	1969	1984	
Devonian Shale	1984	4284	
Corniferous	4284	4385' TD	