

FEDERAL COAL CO. VALUES

LOC. 11313 [N. 25.934.21
E. 20.241.16

Minimum Error of Closure 1" IN 200'
 Source of Elevation LEVELS FROM I.P.#5687 (INFO. BIG MOUNTAIN COAL CO. FIELD BOOK #250 P.61) E. 98360'
 "I, the undersigned, hereby certify that this map is correct to the best of my knowledge and belief and shows all the information required by paragraph 6 of the rules and regulations of the oil and gas section of the mining laws of West Virginia."

- New Location
- Drill Deeper
- Abandonment

1548 P. 35-36
 MAP SHEET 162W 5.99 W.60 FB. 1547 P. 27-29

Company CONSOL. GAS SUPPLY CORP.
 Address CLARKSBURG, W.VA.
 Farm FEDERAL COAL COMPANY
 Tract _____ Acres 18,338 Lease No. 46408
 Well (Farm) No. _____ Serial No. 11313
 Elevation (Spirit Level) 1286'
 Quadrangle BALD KNOB NC
 County BOONE District SHERMAN
 Engineer Jackson M. Jorvin
 Engineer's Registration No. 2397
 File No. _____ Drawing No. _____
 Date SEPT. 14, 1970 Scale 1" = 2640'

STATE OF WEST VIRGINIA
 DEPARTMENT OF MINES
 OIL AND GAS DIVISION
 CHARLESTON

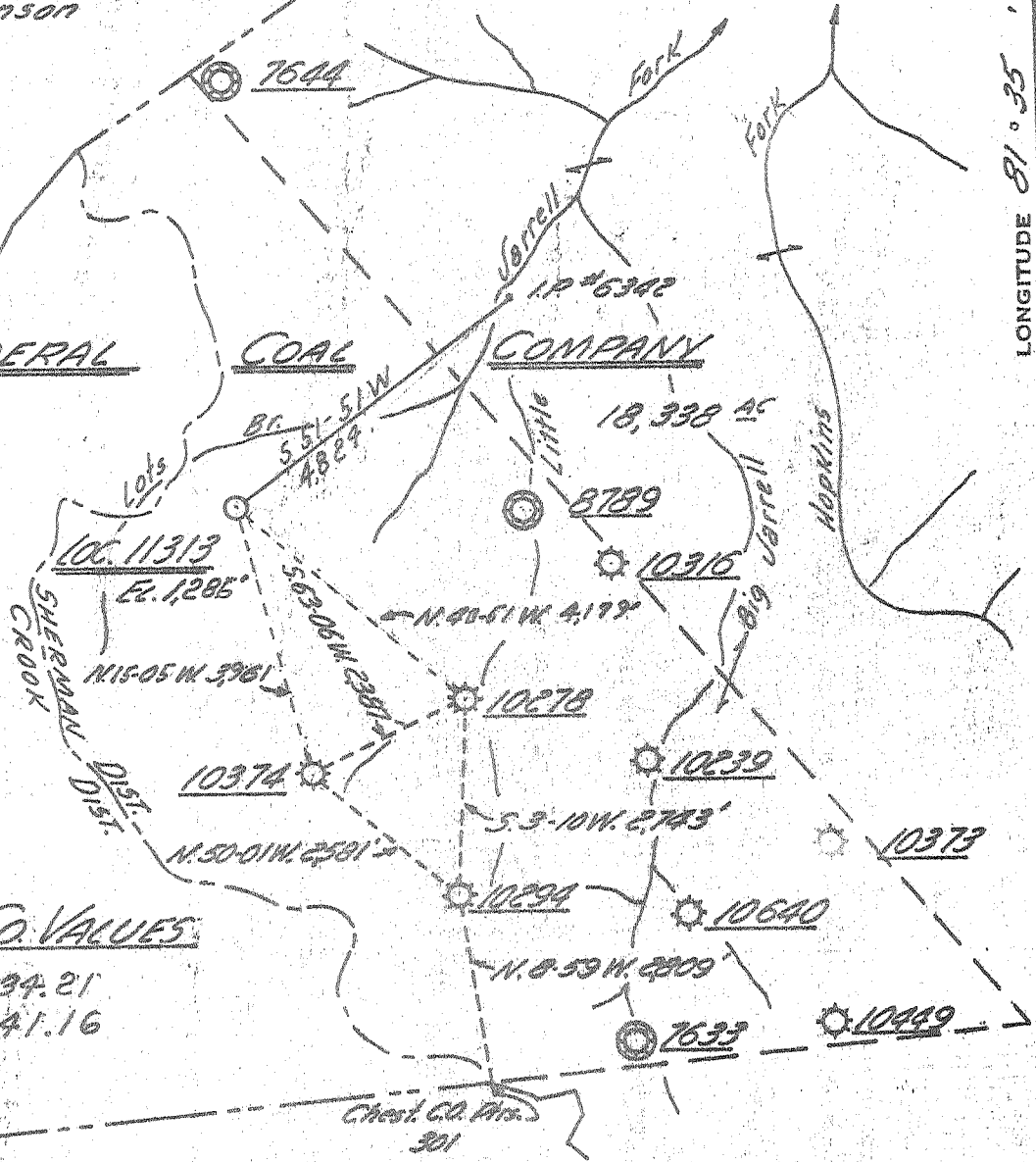
WELL LOCATION MAP
 FILE NO. Boo-1019 (Exp.)
 Re-issued AS Boo-1021

+ Denotes location of well on United States Topographic Maps, scale 1 to 62,500, latitude and longitude lines being represented by border lines as shown.
 - Denotes one inch spaces on border line of original tracing.

Deep Well-Keeper

John Q Dickinson
14.11.25

FEDERAL COAL COMPANY



FEDERAL COAL CO. VALUES:

LOC. 11313 [N. 25.934.21
E. 20241.16

Western Pocahontas Corp.

Minimum Error of Closure 1" IN 200'
 Source of Elevation LEVELS FROM I.P. #5687 (INFO. B. 16 MTH. COAL CO. FIELD BOOK #290 P. 61) E. 983.60'
 "I, the undersigned, hereby certify that this map is correct to the best of my knowledge and belief and shows all the information required by paragraph 6 of the rules and regulations of the oil and gas section of the mining laws of West Virginia."

7.5 min. DIST. loc 15 min
38° 00' 1085
91° 35' 20" 1180 3.45w

Partial Plug
 New Location
 Drill Deeper
 Abandonment
 Date 9-2-91

MAP SHEET 162W 5-99 W. 60 F.B. 1547 P. 27-29 1548 P. 35-36

Company CONSOL GAS SUPPLY CORP.
 Address CLARKSBURG, W.V.A.
 Farm FEDERAL COAL COMPANY
 Tract Acres 18,338 Lease No. 46408
 Well (Farm) No. _____ Serial No. 11313
 Elevation (Spirit Level) 1286' 1440T
 Quadrangle BALD KNOB NC
 County BOONE District SHERMAN
 Engineer Jackson M. Jarvis
 Engineer's Registration No. 2397
 File No. _____ Drawing No. _____
 Date SEPT. 14, 1970 Scale 1" = 2640'

STATE OF WEST VIRGINIA
 DEPARTMENT OF MINES
 OIL AND GAS DIVISION
 CHARLESTON

WELL LOCATION MAP

FILE NO. B-1017 (Exp.)
 Re-issued AS 500-1021-PP-1

+ Denotes location of well on United States Topographic Maps, scale 1 to 62,500, latitude and longitude lines being represented by border lines as shown.

— Denotes one inch spaces on border line of original tracing.

RECEIVED
SEP 7 1971



OIL & GAS DIVISION
DEPT. OF MINES

STATE OF WEST VIRGINIA
DEPARTMENT OF MINES
OIL AND GAS WELLS DIVISION

Rotary
Spudder
Cable Tools
Storage

OG-10

Block No. BAJD KNOB
Permit No. B00-1021

WELL RECORD

Oil or Gas Well Gas
(KIND)

Company Consolidated Gas Supply Corporation
Address Clarksburg, W. Va.
Farm Federal Coal Company Acres 18,338
Location (waters)
Well No. 11313 Elev. 1351'
District Sherman County Boone 1440'
The surface of tract is owned in fee by
Mineral rights are owned by
Drilling commenced 5-25-71
Drilling completed 6-30-71
Date Shot Not shot From To

Casing and Tubing	Used in Drilling	Left in Well	Packers
Size			Kind of Packer
16			
13	367'	367'	
XTD. 9-5/8"	2245'	2245'	Size of
8 1/4			Depth set
6 5/8			
5 3/16			
4 1/2			
3			Perf. top
2			Perf. bottom
Liners Used			Perf. top
			Perf. bottom

Open Flow 1/10ths Water in Inch
1/10ths Merc in Inch
Volume Maxon sand gas 1,800,000 Cu. Ft. Cu. Ft.
Block Pressure Not taken yet lbs. hrs.
Oil None bbls., 1st 24 hrs.
WELL ACIDIZED (DETAILS) No
WELL FRACTURED (DETAILS) No Well dry in Newberg

Attach copy of cementing record. 13" to surface,
CASING CEMENTED SIZE No. Ft. Date
Amount of cement used (bags) 1000' of 9-5/8" cemented
Name of Service Co. Dowell
COAL WAS ENCOUNTERED AT 562 FEET 2 1/2 INCHES
FEET INCHES FEET INCHES
FEET INCHES FEET INCHES

RESULT AFTER TREATMENT (Initial open Flow or bbls.) 1,800 MCFPD
ROCK PRESSURE AFTER TREATMENT HOURS
Fresh Water 78' Feet Salt Water 530' Feet
Producing Sand Will plug lower hole & produce Maxton sand gas Depth See log

Formation	Color	Hard or Soft	Top	Bottom	Oil, Gas or Water	Depth	Remarks
Shale			0	562	Water	78'	Fresh
Shale			562	564		530'	Salt
Shale			564	2014			
Maxton sand			2014	2138	Gas	2107'	
Shale & Red Rock			2138	2350			
Little Lime			2350	2450			
g Line			2450	2655	Gas	Line	Show
ir Sand			2655	2767	Gas	Weir	Show
Shale			2767	3127			
Newbury Shale			3127	3137			
Shale			3137	3142			
Shale			3142	5695			
Carboniferous Lime			5695	5754		6354	
Wiskey Sand			5754	5764		5754	
Olderberg Lime			5764	5850			
Blomite-519			5850	6354		600	
Newburg			6354	6365			
Blomite-MCKE			6365	6490			
Shale			6490	6530			
Rose Hill						6354	
						1351	
Total Depth				555 6570'		-5003	

Will plug lower hole and produce Maxton sand gas

Perforated 9-5/8" casing in Maxton sand and bailed water for several days but gas never returned. Will continue abandonment to surface.

SEP 12 1971