

WW-7
8-30-06

501000A



West Virginia Department of Environmental Protection
Office of Oil and Gas
WELL LOCATION FORM: GPS

API: 47-005-01000 WELL NO.: WV 155660 (Dingess Rum #1)

FARM NAME: Dingess Rum

RESPONSIBLE PARTY NAME: EQT Production Company

COUNTY: Boone DISTRICT: Sherman

QUADRANGLE: Racine 7.5'

SURFACE OWNER: Penn Virginia Operating LLC

ROYALTY OWNER: Penn Virginia Operating LLC

UTM GPS NORTHING: 4222125

UTM GPS EASTING: 441731 GPS ELEVATION: 223 m (730.80 ft)

The Responsible Party named above has chosen to submit GPS coordinates in lieu of preparing a new well location plat for a plugging permit or assigned API number on the above well. The Office of Oil and Gas will not accept GPS coordinates that do not meet the following requirements:

- Datum: NAD 1983, Zone: 17 North, Coordinate Units: meters, ^{Altitude} height above mean sea level (MSL) – meters.
- Accuracy to Datum – 3.05 meters
- Data Collection Method:
Survey grade GPS : Post Processed Differential
Real-Time Differential
Mapping Grade GPS X: Post Processed Differential X
Real-Time Differential

RECEIVED
Office of Oil and Gas

APR 26 2013

WV Department of
Environmental Protection

4. Letter size copy of the topography map showing the well location.

I the undersigned, hereby certify this data is correct to the best of my knowledge and belief and shows all the information required by law and the regulations issued and prescribed by the Office of Oil and Gas.

Ben Szyketa
Signature
4-9-2013
Date

P.S. 2092
Title

05/17/2013

501000 P

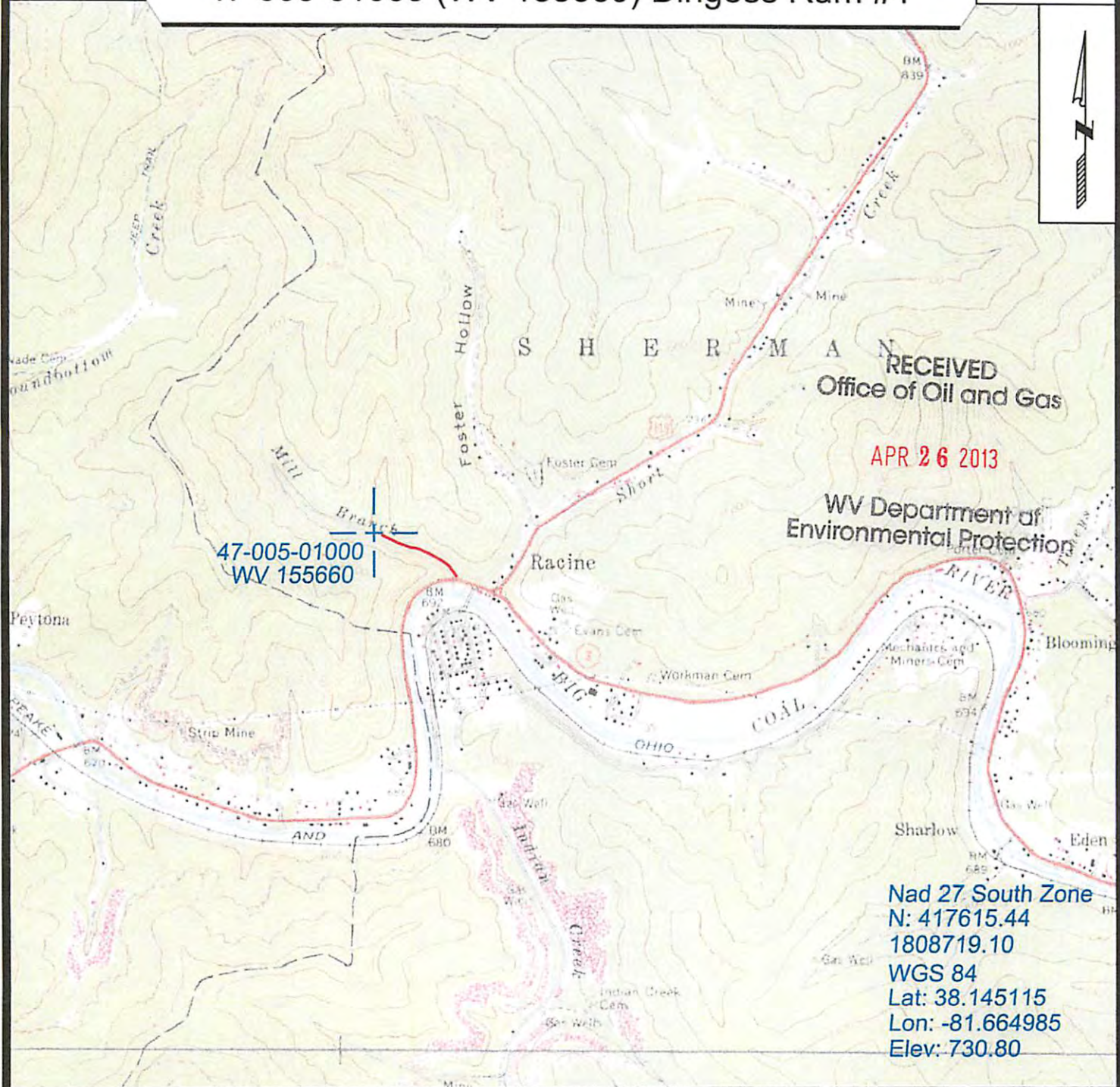
Topo Quad: Racine 7.5' Scale: 1" = 2000'

County: Boone Date: April 5, 2013

District: Sherman Project No: 140-16-00-07

47-005-01000 (WV 155660) Dingess Rum #1

Topo



RECEIVED
Office of Oil and Gas

APR 26 2013

WV Department of
Environmental Protection

47-005-01000
WV 155660

Nad 27 South Zone
N: 417615.44
1808719.10
WGS 84
Lat: 38.145115
Lon: -81.664985
Elev: 730.80



SURVEYING AND MAPPING SERVICES PERFORMED BY:
ALLEGHENY SURVEYS, INC.

1-800-482-8606
P.O. BOX 438
BIRCH RIVER, WV 26610
PH: (304) 649-8606
FAX: (304) 649-8608

PREPARED FOR:

EQT Production Company

1710 Pennsylvania Ave.
Charleston, WV 25302

05/17/2013