

Latitude 38° 15'

Longitude 81° 40'

Bull Creek Coal Land Co.

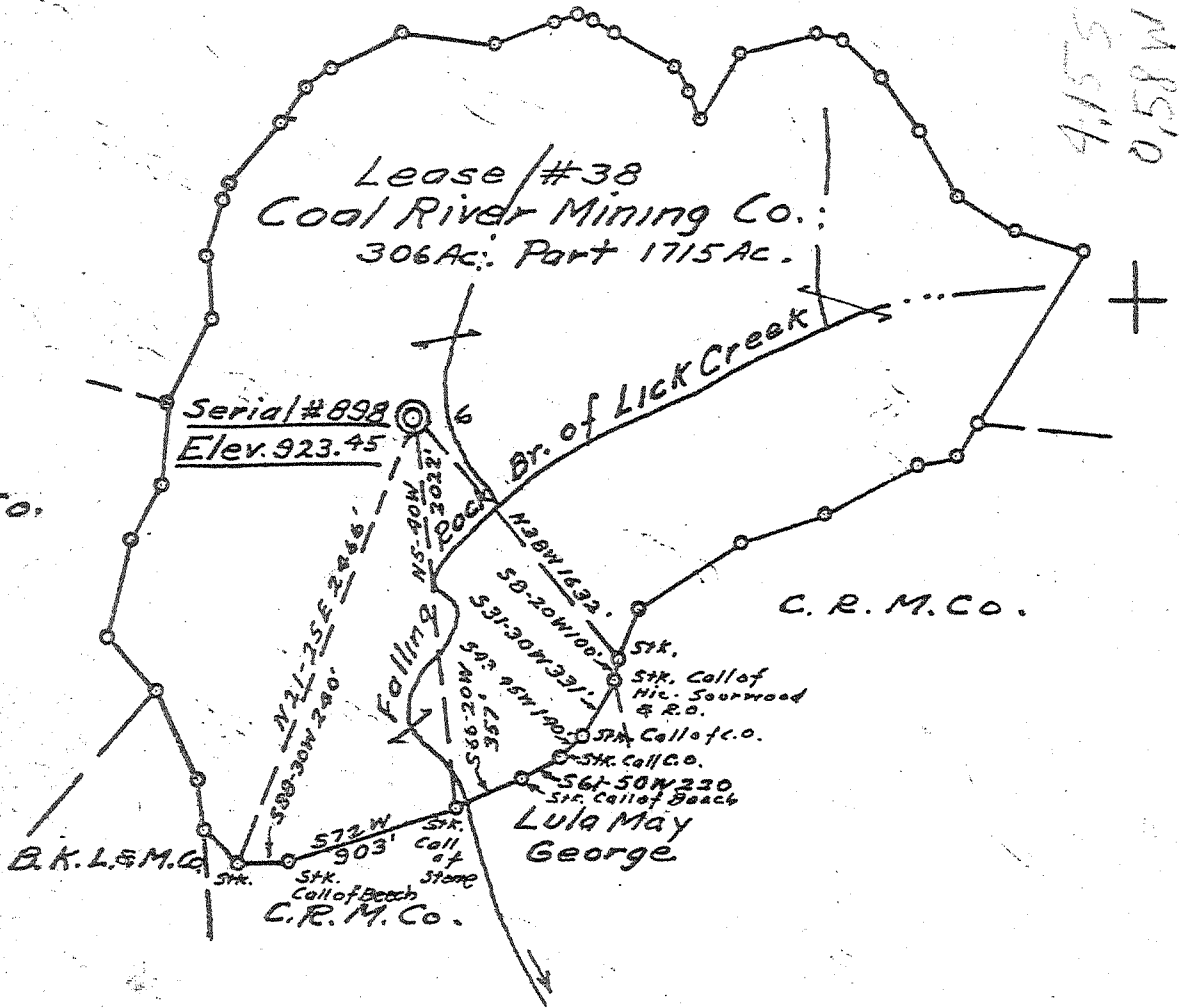
Lease #38  
Coal River Mining Co.;  
306 Ac. Part 1715 Ac.

4155  
0,58W

Serial #898  
Elev. 923.45

C.R.M.Co.

C.R.M.Co.



7.5 0615 topo loc	15' loc (calc)
30°12'30" 1.175	4.055
81°40'00" 0.63W	0.63W

- New Location
- Drill Deeper
- Abandonment

CHANGE OF OPERATOR: BRADLEY & PRITT OIL & GAS COMPANY, INC.

Company Owens, Libbey-Owens Gas Dept.  
 Address Box 4158 Charleston 4 W.Va.  
 Farm Coal River Mining Co.  
           Part 1715  
 Tract \_\_\_\_\_ Acres 306 Lease No. 38  
 Well (Farm) No. 6 Serial No. 898  
 Elevation (Spirit Level) 923.45  
 Quadrangle Peytona 35413" W 0.53"  
 County Boone District Peytona  
 Engineer T.S. Flourney  
 Engineer's Registration No. 269  
 File No. \_\_\_\_\_ Drawing No. \_\_\_\_\_  
 Date Mar 19, 1954 Scale 1" = 1000'

STATE OF WEST VIRGINIA  
 DEPARTMENT OF MINES  
 OIL AND GAS DIVISION  
 CHARLESTON

WELL LOCATION MAP  
 FILE NO. B00-884  
B00-884-REDRILL-10-20-61

+ Denotes location of well on United States Topographic Maps, scale 1 to 62,500, latitude and longitude lines being represented by border lines as shown.

- Denotes one inch spaces on border line of original tracing.

Deep well 6-6237

STATE OF WEST VIRGINIA  
DEPARTMENT OF MINES  
OIL AND GAS DIVISION /

## WELL RECORD

Quadrangle Peytona  
Permit No. B00-884

Oil or Gas Well Comb.  
(KIND)

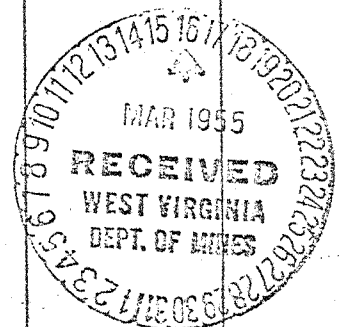
Company OWENS, LIBBEY-OWENS GAS DEPARTMENT  
Address P. O. Box 4158, Charleston 4, W. Va.  
Farm Coal River Mining Co. "B" Acres 306  
Location (waters) \_\_\_\_\_  
Well No. 6 (Serial #898) Elev. 923.45  
District Peytona County Boone  
The surface of tract is owned in fee by \_\_\_\_\_  
Address \_\_\_\_\_  
Mineral rights are owned by Coal River Mining Co.  
625 Liberty Ave. Address Pittsburgh 22, Pa.  
Drilling commenced 4-30-54  
Drilling completed 8-25-54 *See remarks*  
Date Shot 9-16-54 From 4524 To 4471  
With 500# of 80% nitroglycerine gel  
Open Flow \_\_\_\_\_ /10ths Water in \_\_\_\_\_ Inch  
\_\_\_\_\_ /10ths Merc. in \_\_\_\_\_ Inch  
Volume \_\_\_\_\_ Cu. Ft.  
Rock Pressure \_\_\_\_\_ lbs. \_\_\_\_\_ hrs.  
Oil \_\_\_\_\_ Est. 10 bbls., 1st 24 hrs.  
Fresh water 103 feet \_\_\_\_\_ feet  
Salt water 490, 515 feet \_\_\_\_\_ feet

Casing and Tubing	Used in Drilling	Left in Well	Packers
Size			Kind of Packer
16			
13			
10 - 3/4"	432'	432'	Size of
8 5/8"	1218'10"	1218'10"	Depth set
7"	4403'9"	4403'9"	
5 3/16			Perf. top
3			Perf. bottom
2 - 3/8"	-	4505'7"	Perf. top
Liners Used			Perf. bottom

CASING CEMENTED 7" SIZE 4404 No. Ft. 8-10-54 Date

COAL WAS ENCOUNTERED AT 92 FEET \_\_\_\_\_ INCHES  
\_\_\_\_\_ FEET \_\_\_\_\_ INCHES  
\_\_\_\_\_ FEET \_\_\_\_\_ INCHES

Formation	Color	Hard or Soft	Top	Bottom	Oil, Gas or Water	Depth Found	Remarks
Gravel	Brown	Soft	00	14			
Gravel	Yellow	Soft	14	25			
Slate	Light	Soft	25	92			
Coal	Black	Soft	92	94			
Slate	Light	Soft	94	117			
Sand	Light	Soft	117	135			
Slate	Light	Soft	135	159			
Sand	Light	Soft	159	294			
Slate	Light	Soft	294	322			
Slate & Shells	Light	Soft	322	368			
Sand	Light	Med.	368	427			
Slate	Dark	Soft	427	435			
Sand	Light	Soft	435	582			
Slate	Dark	Soft	582	598			
Sand	Light	Med.	598	608			
Slate & Shells	Dark	Soft	608	737			
Sand	White	Hard	737	779			
Slate & Shells	Dark	Med.	779	787			
Sand	Light	Med.	787	842			
Sand	White	Hard	842	887			
Slate	Light	Soft	887	891			
Sand	Light	Med.	891	952			
Sand	White	Hard	952	990			
Slate & Shells	Dark	Soft	990	998			
Red Rock	Red	Soft	998	1003			
Slate & Shells	Dark	Soft	1003	1054			
Red Rock	Red	Soft	1054	1068			
Slate	Dark	Soft	1068	1076			
Slate & Shells	Dark	Soft	1076	1101			
Sand	White	Hard	1101	1133			
Lime	Dark	Hard	1133	1172			
Big Lime	White	Hard	1172	1203			
Slate	Dark	Soft	1203	1205			
Big Lime	White	Hard	1205	1370			

  
 (OVER)

Formation	Color	Hard or Soft	Top	Bottom	Oil, Gas or Water	Depth Found	Remarks
Injun Sand	Red	Med.	1370	1423	Ran 8-5/8" casing on shoe at 1219'		
Sl. & Shells	Grey	Soft	1423	1474	Gas, 1286,	1303	.7 M
Lime	Dark	Hard	1474	1500	Test 1370		.3 M
Shells	Light	Med.	1500	1525	Gas, 1387,		1.8 M
Shell & Sl.	Light	Soft	1525	1764	Gas, 1411		2.1 M
					Test 1474		2.0 M
					Gas, 1482,		2.2 M
					Test 1559		1.9 M
					Gas, 1598		2.2 M
Lime	Light	Med.	1764	1777			
Sl. & Shells	Light	Med.	1777	1841			
Berea Sand	Grey	Hard	1841	1854			
Sl. & Shells	Grey	Med.	1854	1955			
Shell	Light	Hard	1955	1960			
Sl. & Shells	Light	Med.	1960	2186			
Sl. & Shells	Light	Soft	2186	2221			
Sl. & Shells	Light	Med.	2221	2345			
Shells	Light	Hard	2345	2360			
Sl. & Shells	Light	Med.	2360	2613			
Sl. & Shells	Light	Soft	2613	2790			
Sl. & Shells	Light	Med.	2790	2848			
Sl. & Shells	Light	Soft	2848	3034			
Sh. & Shells	Brown	Soft	3034	3125			
Sl. & Shells	Light	Med.	3125	3157			
Shells	Light	Hard	3157	3175			
Sl. & Shells	Light	Med.	3175	3190			
Sl. & Shells	Light	Soft	3190	3335			
Br. Shale 441	Brown	Soft	3335	3358			
Sl. & Shells	Light	Med.	3358	3368			
Sl. & Shells	Light	Soft	3368	3406			
Shale & Shells	Dark	Soft	3406	3459			
Shale & Shells	Dark	Med.	3459	3601			
Shale & Shells	Dark	Soft	3601	3613			
Slate	White	Soft	3613	4105			
Shale	Dark	Soft	4105	4131			
Brown Shale	Brown	Soft	4131	4296			
Slate	White	Soft	4296	4324			
Brown Shale	Brown	Soft	4324	4384			
Conf. Lime	Light	Hard	4384	4404			
					Test 4905		1.3 M
					8-9-54 Ran 7" casing at 4404'		
					8-10-54 Cemented 7" casing with 10		
					sacks cement - Haliburton Co.		
					Cement 3/4 feet inside pipe and approx.		
					40 feet outside, between 7" casing		
					and 8" hole.		
Conif. Lime	Light	Hard	4404	4471			
Oris. Sand	Light	Hard	4471	4479	Gas, 4475		25.9 M
Oris. Sand	Grey	Hard	4479	4494	40 gal. oil found when starting up at		
					4475 after 56 hour shut down.		
Lime - <del>Hard</del>	Grey	Hard	4494	4524	Test 4498		23.7 M
					Gas, 4499		25.4 M
			T.D.	4524	Gas, 4506		27.7 M
					Test 4513		26.1 M
					Gas, 4517		27.3 M
					8-26-54 Bailed oil. 50 gal. oil had		
					accumulated in 20 hours.		
					Gas testing		30.1 M
					Shut well in.	7" 8"	
					Pressure:		
					24 Hrs.	330 55	
					48 Hrs.	530 70	
					7 Days	560 92	
					14 Days	565 90	
					21 Days	565 102	
					Well bailed & swabbed in September,		
					October & December.		
					12-13-54 Decided to consider well com-		
					plete on this date. Pumping unit to be		
					purchased and installed later.		

4384

4471

923

923

-3461

-3548

Date March 14, 1955

APPROVED OWENS. LIPSEY-OWENS GAS DEPARTMENT