

Latitude 38° 00'

Longitude 81° 40'

Pond Fork Coal Co. Etal

Pond Fork Coal Co. Etal.

2,405

4, 21 W

3 WC (L-5)

Lease #2555  
Pond Fork  
Coal Co. Etal  
13 AC. Part 6898.16

South Br.

Stone

Stk. Call of Beech Stp.

Serial # 871  
Elev. 974.35

Pond Fork Coal Co. Etal

Joe Hollow

Stk. Call 2 Sp. Pine Stumps

Stk. Call of Stone

New Location...   
Drill Deeper.....   
Abandonment.....

Pond Fork Coal Co. Etal.

Company Owens, Libbey-Owens Gas Dept  
 Address Box 4153 Charleston 4 W. Va.  
 Farm Pond Fork Coal Co. Etal  
Part 6898.16  
 Tract Part 27 Acres 13 Lease No. 2555  
 Well (Farm) No. 1 Serial No. 871  
 Elevation (Spirit Level) 974.35  
 Quadrangle Bald Knob 352.23 " 4.20 "  
 County Boone District Creek  
 Engineer T.S. Flournoy  
 Engineer's Registration No. 269  
 File No. \_\_\_\_\_ Drawing No. \_\_\_\_\_  
 Date April 9, 1953 Scale 1" = 300'

STATE OF WEST VIRGINIA  
DEPARTMENT OF MINES  
OIL AND GAS DIVISION  
CHARLESTON

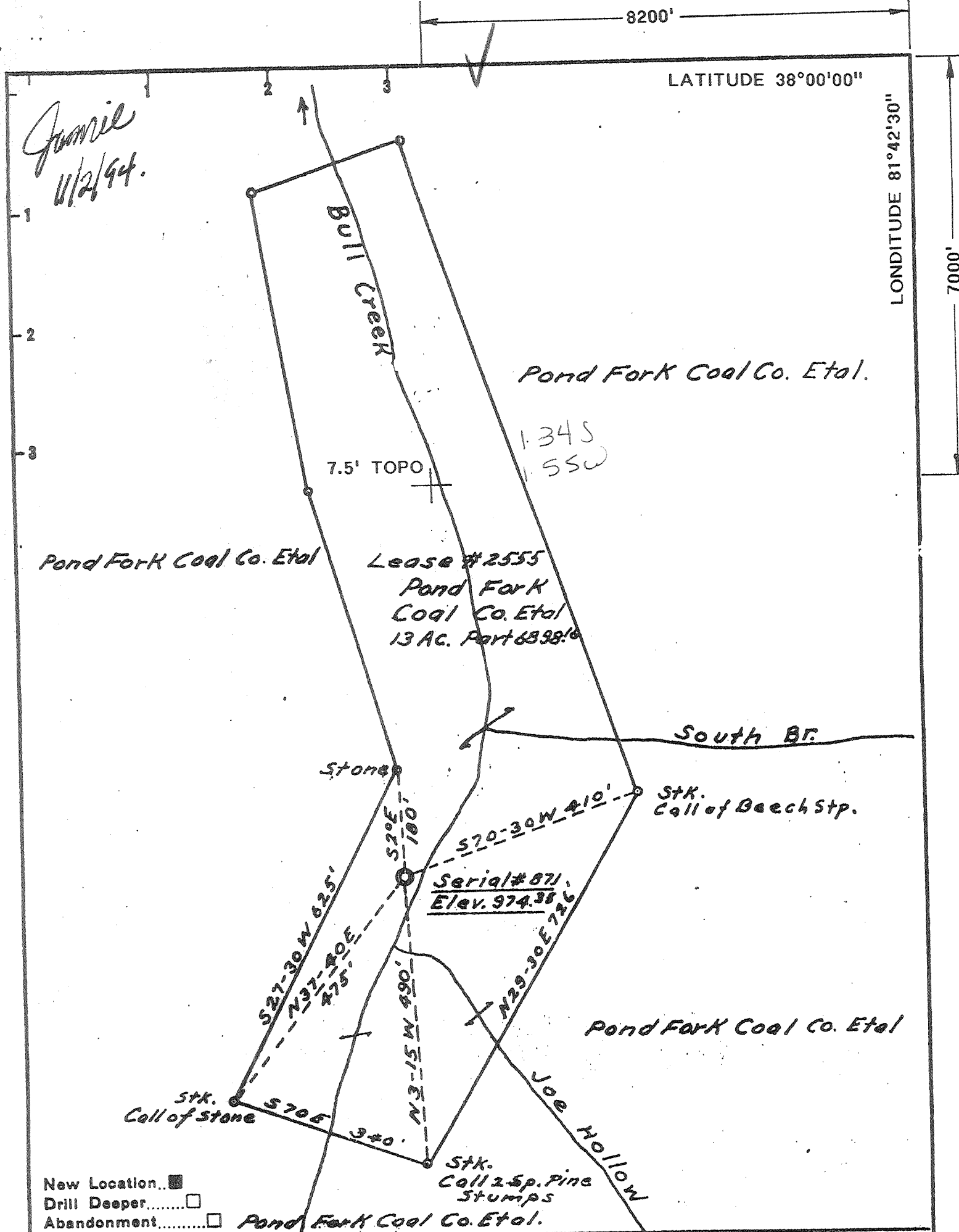
WELL LOCATION MAP  
FILE NO. B00-878

+ Denotes location of well on United States Topographic Maps, scale 1 to 62,500, latitude and longitude lines being represented by border lines as shown.

- Denotes one inch spaces on border line of original tracing.

6-6 247

1937-2317 examined by R.P. Flowers) Deep Well



Company CABOT OIL & GAS CORP.  
 Address 400 Fairway Drive, Suite 400 Corapolis, Pennsylvania 15108  
 Farm Pond Fork Coal Co. Etal  
 Part 6898.16  
 Tract Part 27 Acres 13 Lease No. 2555  
 Well (Farm) No. 1 Serial No. 871  
 Elevation (Spirit Level) 974.35  
 Quadrangle WHARTON WV 7.5'  
 County Boone District CROOK  
 Engineer T.S. Flournoy  
 Engineer's Registration No. 269  
 File No. \_\_\_\_\_ Drawing No. \_\_\_\_\_  
 Date April 8, 1953 Scale 1" = 200'

STATE OF WEST VIRGINIA  
 DIVISION OF ENVIRONMENTAL PROTECTION  
 OFFICE OF OIL & GAS  
 NITRO, WEST VIRGINIA

WELL LOCATION MAP  
 Well No. 47-005-0878 P.  
*Cancelled*

+ Denotes location of well on United States Topographic Maps, scale 1 to 62,500, latitude and longitude lines being represented by border lines as shown.

- Denotes one inch spaces on border line of original tracing.

1997

Boo 0878-P

STATE OF WEST VIRGINIA  
DEPARTMENT OF MINES  
OIL AND GAS DIVISION

8

Quadrangle Bald Knob

## WELL RECORD

Permit No. Boo- 878

Oil or Gas Well Gas  
(KIND)

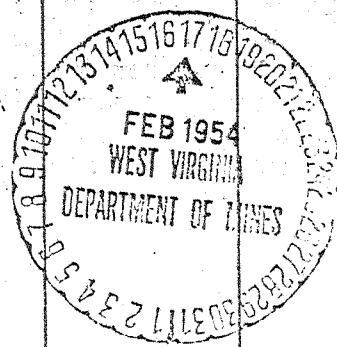
Company OWENS, LIBREY-OWENS GAS DEPARTMENT  
 Address P. O. Box 4158, Charleston 4, W. Va.  
 Farm Pond Fork et al Acres 13  
 Location (waters) \_\_\_\_\_  
 Well No. 1 (Serial No. 871) Elev. 974.35  
 District Crook County Boone  
 The surface of tract is owned in fee by \_\_\_\_\_  
 Address \_\_\_\_\_  
 Mineral rights are owned by Pond Fork Coal Co., etals  
c/o Fred Ramsey Agt. Address: Madison, W. Va.  
 Drilling commenced 6-17-53  
 Drilling completed 12-30-53  
 Date Shot 12-31-53 From 4006 To 5236  
 With 12000 # Detonite  
 Open Flow /10ths Water in \_\_\_\_\_ Inch  
 /10ths Merc. in \_\_\_\_\_ Inch  
 Volume Weir Shells & Br. Shale - 53 M Cu. Ft.  
 Rock Pressure 150 lbs. 20 hrs.  
 Oil \_\_\_\_\_ bbls., 1st 24 hrs.  
 Fresh water 111', hole full feet 470', 5 gal. P.H feet  
 Salt water 111.3' 3 BPH feet 1854' feet

Casing and Tubing	Used in Drilling	Left in Well	Packers
Size			Kind of Packer <u>Parmaco</u>
16			Bottom hole -
13			Size of <u>8-5/8"x10x16"</u>
10 <u>3/4"</u>	<u>406'5"</u>	<u>406'5"</u>	<u>Oilwell B.H. 7x8x16</u>
<del>8-5/8"</del>	<u>1599'6"</u>	<u>Pulled</u>	Depth set <u>1618</u>
<del>8-5/8"</del>	<u>1620'6"</u>	<u>Pulled</u>	Set @ <u>2216 (Oilwell)</u>
<del>8-5/8"</del>	<u>1621'1"</u>	<u>1621'1"</u>	Perf. top _____
<u>7"</u>	<u>2217'6"</u>	<u>Pulled</u>	Perf. bottom _____
<del>7"</del>	<u>2218'9"</u>	<u>Pulled</u>	Perf. top _____
Liners Used <u>7"</u>	<u>2218'5"</u>	<u>2218'5"</u>	Perf. bottom _____

CASING CEMENTED \_\_\_\_\_ SIZE \_\_\_\_\_ No. Ft. \_\_\_\_\_ Date \_\_\_\_\_

COAL WAS ENCOUNTERED AT 63 FEET 24 INCHES  
 \_\_\_\_\_ FEET \_\_\_\_\_ INCHES FEET \_\_\_\_\_ INCHES  
 \_\_\_\_\_ FEET \_\_\_\_\_ INCHES FEET \_\_\_\_\_ INCHES

Formation	Color	Hard or Soft	Top	Bottom	Oil, Gas or Water	Depth Found	Remarks
6-9 to 6-12-53					Rigging up.		
Surface			0	18			
Gravel Sand			18	31			Ran 23' of 13" drive pipe.
Sand	Grey	Med.	31	51			
Slate	Dark	Soft	51	63			
Coal	Black	Soft	63	65			
Slate	Dark	Soft	65	76			
Sand	Grey	Med.	76	111			Water 111-122, hole full.
Sand	Light	Med.	111	122			
Slate	Light	Soft	122	127			
Sand	Light	Med.	127	149			
Lime	White	Hard	149	153			
Sand	Light	Med.	153	170			
Slate	Dark	Soft	170	173			
Sand	White	Med.	173	197			
Slate	Light	Med.	197	209			
Slate	Light	Soft	209	227			
Sand	Light	Med.	227	265			
Gritty L.	Dark	Med.	265	277			
Lime	Light	Med.	277	294			
Slate	Dark	Soft	294	299			
Sl. & Shells	Black	Med.	299	322			
Sl. & Shells	Light	Soft	322	336			
Coal Blossom	Dark	Soft	336	347			
Sl. & Shells	Dark	Soft	347	363			
Sl. & Shells	Light	Soft	363	386			
Slate	Light	Soft	386	433			
Sl. & Shells	Grey	Med.	433	454			
Sand	Light	Med.	454	484			
Slate	Light	Soft	484	499			Water at 470', 5 gal. / hour
Sand	White	Med.	499	551			
Sand	Grey	Soft	551	588			
Sl. & Shells	Dark	Soft	588	603			
Sand	Light	Med.	603	654			
Broken S.	Light	Med.	654	702			
Slate	Light	Soft	702	719			
Slate	Dark	Soft	719	772			
Sand	Grey	Med.	772	805			



(Over)

(OVER)

Formation	Color	Hard or Soft	Top	Bottom	Oil, Gas or Water	Depth Found	Remarks
Slate	Dark	Soft	805	832			
Slate	Light	Soft	832	867			
Sand	Light	Hard	867	945			
Sl.&Shells	Dark	Med.	945	966			
Sand	Light	Med.	966	1019			
Sand	Yellow	Hard	1019	1040			
Sand	Grey	Hard	1040	1082			
Sand	Yellow	Hard	1082	1143	Water 1143, .3 BPH.		
Water S.	White	Med.	1143	1146	Water 1151-63, hole filling		
Sand	Light	Hard	1146	1173			
Lime	Dark	Hard	1173	1201			
Sl.&Shells	Dark	Med.	1201	1224			
Sand	Light	Hard	1224	1231			
Sand Broken	Dark	Med.	1231	1253			
Lime	Dark	Hard	1253	1262			
Sand	Grey	Hard	1262	1298			
Sand	Light	Hard	1298	1378			
Slate	Dark	Soft	1378	1382			
Lime	Light	Hard	1382	1385			
Sand	Light	Hard	1385	1598			
Sand	Light	Hard	1598	1600			
Sand	Light	Hard	1600	1604			
Water Sand	Grey	Med.	1604	1608			
							Ran 8-5/8" csg. on shoe at 1600' At 1604, discovered either that water was not shut off by casing or that new water zone was encountered. Water increase at 1604 At 1608, pulled 8-5/8" casing Reamed hole 1600 - 1608 Water level 410' at 1608 Ran hole straightener for 3 tours.
Sand	Light	Hard	1608	1618			
							Ran 8-5/8" casing on shoe at 1618 ft. 25 sacks Aqua gel put in by Haliburton Co.
Lime	Dark	Hard	1618	1622			
							Shut down at 1622 to test pipe, 8-25-53
Sand	Light	Hard	1622	1625			
							Water broke in at 1625 Pulled 8-5/8" casing. Reran 8-5/8" at 1618 on B.H. Packer
Lime	Dark	Hard	1625	1627			
Sandy Lime	Dark	Hard	1627	1635			
Sandy Lime	Light	Hard	1635	1644			
Sand	Light	Hard	1644	1663			
Lime	Dark	Med.	1663	1668			
Lime	Grey	Med.	1668	1675			
Sandy Lime	Dark	Med.	1675	1681			
Sand	Grey	Hard	1681	1694			
Slate	Dark	Soft	1694	1697			
Gritty Lime	Grey	Med.	1697	1704			
Sand	Grey	Hard	1704	1839			
Sand	Grey	Med.	1839	1854	Water 1854 - 1/3 BPH		
Sand	Grey	Hard	1854	1858			
Sand	Grey	Med.	1858	1890			
Sand	Grey	Hard	1890	1897			
Sand	White	Hard	1897	1944			
Lime	Dark	Med.	1944	1950			
Red Rock	Red	Soft	1950	1969			
Lime Gritty	Grey	Hard	1969	1978			
Sl.&Shells	Dark	Med.	1978	1990			
Lime	Dark	Hard	1990	1995			
Slate	Dark	Soft	1995	2011			
Red Rock	Red	Soft	2011	2025			
Lime	Grey	Med.	2025	2037			
Slate	Dark	Soft	2037	2052			
Sl.&Shells	Dark	Soft	2052	2101			
Little Lime	Dark	Med.	2101	2124			
Lime	Dark	Hard	2124	2136			
Lime	Dark	Med.	2136	2157			
Lime	Dark	Hard	2157	2184			
Big Lime	Grey	Hard	2184	2211	(Cont.)		

Date February 9, 1954

APPROVED OWENS, LIBBEY-OWENS GAS DEPT. Owner

By

*A. H. [Signature]*

STATE OF WEST VIRGINIA  
DEPARTMENT OF MINES  
OIL AND GAS DIVISION /A

## WELL RECORD

8

Permit No. 800-878 (Cont.)

Oil or Gas Well Gas  
(KIND)

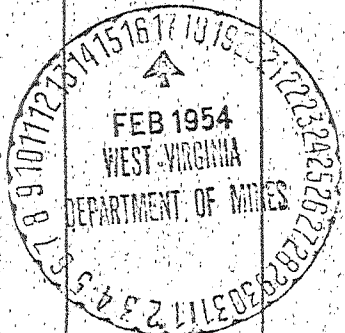
Company OWENS, LIBBEY OWENS GAS DEPARTMENT  
Address P. O. Box 4158, Charleston 4, W. Va.  
Farm Pond Fork Coal Co., etals Acres 13  
Location (waters) \_\_\_\_\_  
Well No. \_\_\_\_\_ Elev. \_\_\_\_\_  
District \_\_\_\_\_ County \_\_\_\_\_  
The surface of tract is owned in fee by \_\_\_\_\_  
Address \_\_\_\_\_  
Mineral rights are owned by \_\_\_\_\_  
Address \_\_\_\_\_  
Drilling commenced 6-17-53  
Drilling completed 12-30-53  
Date Shot 12-31-53 From 4006 To 5236  
With 12000# Detonite  
Open Flow /10ths Water in \_\_\_\_\_ Inch  
/10ths Merc. in \_\_\_\_\_ Inch  
Volume \_\_\_\_\_ Cu. Ft.  
Rock Pressure \_\_\_\_\_ lbs. \_\_\_\_\_ hrs.  
Oil \_\_\_\_\_ bbls., 1st 24 hrs.  
Fresh water \_\_\_\_\_ feet \_\_\_\_\_ feet  
Salt water \_\_\_\_\_ feet \_\_\_\_\_ feet

Casing and Tubing	Used in Drilling	Left in Well	Packers
Size			Kind of Packer
16			
13			
10			Size of
8 1/4			
6 3/4			Depth set
5 3/16			
3			Perf. top
2			Perf. bottom
Liners Used			Perf. top
			Perf. bottom

CASING CEMENTED \_\_\_\_\_ SIZE \_\_\_\_\_ No. Ft. \_\_\_\_\_ Date \_\_\_\_\_

COAL WAS ENCOUNTERED AT \_\_\_\_\_ FEET \_\_\_\_\_ INCHES  
\_\_\_\_\_ FEET \_\_\_\_\_ INCHES \_\_\_\_\_ FEET \_\_\_\_\_ INCHES  
\_\_\_\_\_ FEET \_\_\_\_\_ INCHES \_\_\_\_\_ FEET \_\_\_\_\_ INCHES

Formation	Color	Hard or Soft	Top	Bottom	Oil, Gas or Water	Depth Found	Remarks
Big Lime	Light	Hard	2211	2216			
Big Lime	Grey	Hard	2216	2222			
Big Lime	Light	Hard	2222	2344 2187 6	Gas 2287-2299' = 13/10 W-1/8" = .4 M		10-12-53 to 10-13-53 tested for water. Found thread leak at 310' from bottom of casing. Pulled 7" casing 2217'-7"
							Reran 7" casing on B.H. Packer at 2216
							10-16-53 Cleaning out and drying up hole. Loaded 8x7" hole with water to test pipe.
							10-19-53 found 16 qts. after weekend. Dried up hole & ran tester. No water in 5 hours. Test of gas 6/10 W-1/8" = .3 M
Big Lime	Grey	Med.	2344	2371			
Red Injun	Red	Med.	2371	2410			
Sl. & Shells	Light	Med.	2410	2528			
Shell	Light	Hard	2528	2559	Gas 2457 33/10 W-3/8" 6.3 M		
Sl. & Shells	Light	Med.	2559	2583	Test 2583 8/10 W-3/8" 3.1 M		
Sl. & Shells	Light	Soft	2583	2617			
Sl. & Shells	Light	Med.	2617	2730			
Lime	Dark	Hard	2730	2753			
Sl. & Shells	Light	Med.	2753	2865	Test 2718 same 2.4 M		
					Gas-? 2730-2753 8/10 W-3/8" 3.1 M		
							11-2-53 and 11-3-53 testing pipe for water. Found casing leak at 350 ft. from bottom of pipe.
							Reran 7" csg. on B.H. packer at 2216'
Br. Shale	Brown	Soft	2865	2871			



(OVER)

(Over)

Formation	Color	Hard or Soft / A	Top	Bottom	Oil, Gas or Water	Test Found	Pressure
Corea Sand	Grey	Hard	2871	2902			
Lime	Dark	Med.	2902	2905	Test 2902	4/10 W-3/8"	2.2 M
Lime Shells	Light	Med.	2905	2980			
Sl.&Shells	Light	Med.	2980	3847	Test 3045	same	2.2 M
					SLM 3176 Sand LM 3174		
					Test 3186	4/10 W-3/8"	2.2 M
					Test 3279	4/10 W-3/8"	2.2 M
					Test 3380	4/10 W-3/8"	2.2 M
					Test 3507	4/10 W-3/8"	2.2 M
					SLM 3536 Sand LM 3535		
					Test 3655	6/10 W-3/8"	2.7 M
					Test 3772	6/10 W-3/8"	2.7 M
Sl.&Shells	Light	Soft	3847	4011	Test 3878	Same	2.7 M
Shells&Shale	Dark	Med.	4011	4022	Test 4018	6/10 W-3/8"	2.7 M
Sl.&Shells	Dark	Med.	4022	4050			
Shale&Shells	Dark	Med.	4050	4076			
Sl.&Shells	Dark	Med.	4076	4240			
Shell	Dark	Hard	4240	4248	Test 4240	6/10 W-3/8"	2.7 M
Sl.&Shells	Dark	Med.	4248	4314			
Br. Shale	Brown	Soft	4314	4344			
Sl.&Shale	Dark	Soft	4344	4383			
Shale	Brown	Soft	4383	4523			
Shell	Brown	Hard	4523	4538			
Shells	Light	Med.	4538	4559			
Slate	White	Soft	4559	4661	SLM 4661 Sand LM 4660		
Shale	Dark	Soft	4661	4696	Gas tested twice each hour from 4368 to 4959. Test always 6/10 W-3/8" = 2.7		
Slate	White	Soft	4696	4886	SLM 4959 Sand LM 4958		
Slate	Dark	Soft	4886	4959			
Shale	Brown	Soft	4959	5159			
Slate	Light	Soft	5159	5170			
Shale	Brown	Soft	5170	5231			
Corniferous	Grey	Hard	5231	5236	Driller says gas blew tools up the hole at 5072'		
					Test after getting tools loose 9/10 W-3/8" = 3.3 M		
					There is a question as to whether this is new gas.		
			Total Depth	5236			
			Total Depth A.S.	5116			
					Test 5150	7/10 W-3/8" = 2.9 M	
					Test 5170	9/10 W-3/8" = 3.3 M	
					Test 5236	6/10 W-3/8" = 2.7 M	
					SLM 5236 Sand LM 5230		
					Shot 12-31-53 with 12000# Detonite from 4006' to 5236'		
					Test before shot 6/10 W-3/8" = 2.7 M		
					Test 15 min. A. S. = 1,327 M		
					Test 1 hour 16/10 W-2" = 463 M		
					Test 22 hours 46/10 W-1" = 53 M		
					Final open flow = 53 M		
					Shut in in 7" casing.		
			5231				
			974				
			4257				

Date February 9, 1954

APPROVED OWENS, LIBBEY-OWENS GAS DEPT. Owner

By *[Signature]* (Title)