

**#184
LENNING ESTATE
2585 AC.**

New Location...
 Drill Deeper.....
 Abandonment.....

7.5 0615 topo loc 15' loc
 38°07'30" 0.515 3.395
 81°42'30" 0.20 W 2.47 W

Company CARBON OIL & GAS CORP. OF W.Va.
 Address P.O. Box 628, CHARLESTON, W.V. 25322
 Farm LENNING ESTATE
 Tract _____ Acres 2585 Lease No. 184
 Well (Farm) No. 9 Serial No. 845
 Elevation (Spirit Level) 1057.98
 Quadrangle PEYTONA 4 S 3.50" W 2.54"
 County BOONE District PEYTONA
 Engineer T. S. FLOURNOY
 Engineer's Registration No. 269
 File No. _____ Drawing No. _____
 Date NOV. 5, 1951 Scale 1" = 600 FT.

STATE OF WEST VIRGINIA
 DEPARTMENT OF MINES
 OIL AND GAS DIVISION
 CHARLESTON

WELL LOCATION MAP
 FILE NO. B00-868-P

+ Denotes location of well on United States Topographic Maps, scale 1 to 62,500, latitude and longitude lines being represented by border lines as shown.

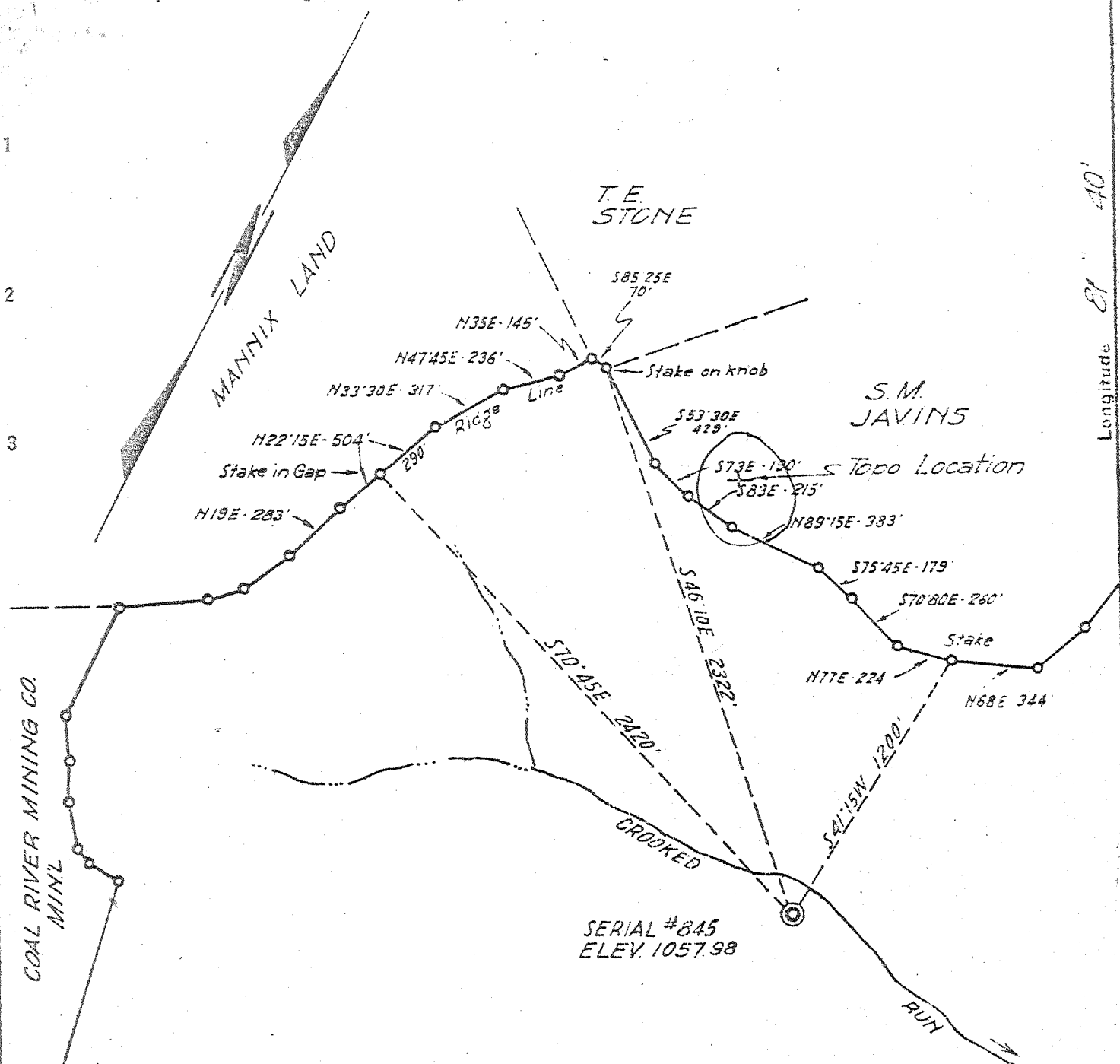
- Denotes one inch spaces on border line of original tracing.

JUN 9 1986

deep

Latitude 38° 10'

Longitude 81° 40'



#184
LENNING ESTATE
 2585 AC.

3.48 S.
 2.53 W.

4C (K-5)

- New Location
- Drill Deeper
- Abandonment

Company OWENS LIBBEY-OWENS GAS DEPT.
 Address BOX 4158 CHARLESTON 4 W.VA.
 Farm LENNING ESTATE
 Tract _____ Acres 2585 Lease No. 184
 Well (Farm) No. 9 Serial No. 845
 Elevation (Spirit Level) 1057.98
 Quadrangle PEYTONA 4 S. 3.50" W 2.54"
 County BOONE District PEYTONA
 Engineer T. S. FLOURNOY
 Engineer's Registration No. 269
 File No. _____ Drawing No. _____
 Date NOV. 5, 1951 Scale 1" = 600 FT.

STATE OF WEST VIRGINIA
 DEPARTMENT OF MINES
 OIL AND GAS DIVISION
 CHARLESTON

WELL LOCATION MAP
 FILE NO. 500-868

+ Denotes location of well on United States Topographic Maps, scale 1 to 62,500, latitude and longitude lines being represented by border lines as shown.

- Denotes one inch spaces on border line of original tracing

6-6 237

Deep Well ✓

WEST VIRGINIA DEPARTMENT OF MINES
OIL & GAS DIVISION
W E L L R E C O R D

Permit No. BOONE 868
Poytona Quad.

Gas

Company	Owens, Libbey-Owens Gas Dept.	CASING & TUBING
Address	P.O.Box 4156, Charleston 4, W. Va.	
Farm	Lonning Estate Acres 2565	13 47 47
Well No.	9 (OLO No. 845) Elev. 1057.93	10 303 303
District	Poytona Coujty - Boone	6 1/2 1484 1484
Mineral	Garner Williams, 1309A Quarrier Street, Charleston, W. Va.	2 1730
Commenced	12/31/51	Hookwall Packer
Completed	4/23/52	3 1/2" x 8" x 16"
Date Shot	4/25/52 from 4549 to 3315	Depth Set 1725-1729
With	12,200# Detonite	
Volume	Big Lime, 5 M; Shells & Shale 25 M,	
R.P.	Big Lime 126#, Shs. & Shale 160# 46 hours	

Soil	Dark	0	3	Slate Black	1234	1243	Sl.&Shls.	2516	2555
Br. Sand	Yellow	3	13	Slate Brown	1243	1251	Slate Gray	2555	2565
Sand	Yellow	13	41	Lime White	1251	1255	Lime Gray	2565	2580
Sand	Gray	41	61	Slate White	1255	1259	Sl.&Shls.	2580	2625
Slate	Black	61	72	Lime Blue	1259	1263	Lime Gray	2625	2643
Slate	Dark	72	83	Red Rock	1263	1269	Sl.&Shls.	2643	2733
Sand	White	83	102	Slate Gray	1269	1277	Sand Gray	2733	2771
Sand	Light	102	132	Lime White	1277	1281	Sand Gray	2771	2806
Slate	Black	132	139	Slate Brown	1281	1284	Sand Gray	2806	2825
Sand	Light	139	155	Lime Black	1284	1288	Lime	2825	2852
Sand	Dark	155	219	Maxton Sand	1288	1290	Lime Dark	2852	2860
Sand	Yellow	219	256	Maxton Sand	1290	1308	Sl.&Shls.	2860	2896
Sand	Light	256	267	Maxton Sand	1308	1321	Sand Gray	2896	2942
Sand	Blue	267	300	Maxton Sand	1321	1347	Lime Dark	2942	2954
Sand		300	303	Lime Black	1347	1350	Sl.&Shls.	2954	3015
Sand	Yellow	303	307	Slate Light	1350	1351	Lime Dark	3015	3031
Sand	White	307	336	Little Lime	1351	1372	Sl.&Shls.	3031	3061
Sl.&Shls.	Dark	336	349	Little Lime	1372	1411	Same Gray	3061	3116
Slate	Dark	349	403	Little Lime	1411	1419	Sand Gray	3116	3166
Br. Sand	Gray	403	436	Little Lime	1419	1446	Sand Gray	3166	3295
Sand	Gray	436	447	Big Lime Gray	1446	1528	Shale Brown	3295	3301
Br. Sand	White	447	472	Big Lime Pink	1528	1550	Lime Blue	3301	3325
Sand	Gray	472	520	Big Lime Gray	1550	1627	Sl.&Shls. Br.	3325	3358
Sand	White	520	535	Big Lime Dark	1627	1641	Shale Brown	3358	3366
Sand	Gray	535	543	In. Sd. Rod	1641	1659	Lime Gray	3366	3387
Sand	Gray	543	560	Sand	1659	1675	Lime Dark	3387	3410
Sand	White	560	581	Slate White	1675	1677	Lime Gray	3410	3465
Sand	Gray	581	596	Slate Dark	1677	1712	Shale Brown	3465	3492
Slate	Dark	596	601	Slate Dark	1677	1712	Lime Gray	3492	3508
Lime	Blue	601	615	Shells Gray	1417	1750	Slate Gray	3508	3517
Sand	Gray	615	635	Lime Gray	1750	1757	Shale Brown	3517	3579
Water Sd.	Gray	635	637	Slate Dark	1757	1759	Sl.&Shls. Gray	3579	3607
Sand	White	637	731	Lime Dark	1759	1769	Shale Brown	3607	3620
Sand	White	631	653	Slate Gray	1769	1775	Slate White	3610	3628
Sand	White	653	697	Sl.&Shls. Gray	1775	1817	Sl.&Shls.	3628	3930
Sand	White	697	831	Sand Gray	1817	1953	Lime Gray	3930	3973
Sand	White	831	859	Slate Gray	1953	2003	Sl.&Shls.	3973	4246
Lime	Blue	859	863	Sl.&Shls. Gray	2003	2070	Lime Dark	4246	4256
Sand	Gray	863	866	Brown Shale	2070	2085	Shale Brown	4256	4336
Sand	Blue	866	866	Berea Sand	2085	2094	Sl.&Shls.	4336	4370
Sand	White	866	912	Lime Gray	2094	2134	Shale Brown	4370	4477
Sand	Gray	912	947	Slate White	2134	2144	Slate Gray	4477	4491
Sand	White	947	965	Slate	2144	2151	Shale Black	4491	4543-455
Sand 9	Gray	965	994	Lime Gray	2151	2169	Gr. Lime	4543	4549
Sand	White	994	1005	Slate	2169	2174	TOTAL DEPTH	4549	4549
Sand	gray	1005	1042	Sl.&Shls.	2174	2190	TOTAL DEPTH A-S.	4549	4441
Lime	Black	1042	1046	Lime Gray	2190	2193			
Slate	Light	1046	1052	Sl.&Shls.	2193	2202			
Sand	White	1052	1101	Sl.&Shls. Gray	2202	2240	Test before shot 4 M		
Sand	Blue	1101	1125	Lime Gray	2240	2255	Final open flow after		
Sand	Blue	1125	1152	Sl.&Shls.	2255	2292	tubing: Big Lime 5 M		
Sand	Gray	1152	1194	Sand Gray	2292	2323	Shells & Shale 25 M		
Slate	White	1194	1207	Sand Gray	2323	2361	Total 30 M.		
Red Rock	Red	1207	1208	Sand Gray	2361	2368			
Slate	Blue	1208	1210	Sand Gray	2368	2492			
Slate	White	1210	1226	Lime Shell	2492	2508			
Sand	Gray	1226	1234	Sl.&Shls.	2508	2516			

4548
1058
3490

RECEIVED
NOV 26 1986

AFFIDAVIT OF PLUGGING AND FILLING WELL

DIVISION OF OIL & GAS
DEPARTMENT OF ENERGY

AFFIDAVIT SHOULD BE MADE IN TRIPLICATE, one copy mailed to the Division, one copy to be retained by the Well Operator and the third copy (and extra copies if required) should be mailed to each coal operator at their respective addresses.

Cannelton Industries, Inc.
Coal Operator or Owner
1205 One Valley Square
Charleston, WV 25301
Address

Cabot Oil and Gas of West Virginia
Name of Well Operator
P. O. Box 628, Charleston, WV 25322
Complete Address

Estate of Garner Williams
Coal Operator or Owner
1309-A Quarrier Street
Charleston, WV 25301
Address

November 20 19 86
WELL AND LOCATION

Thomas G. Williams, Executor of the Estate
of Mary Williams
Lease or Property Owner
1568 Louden Heights Road, Chas. WV 25314
Address

Peytona District
Boone County

WELL NO. #9

Lenning Estate Farm

STATE INSPECTOR SUPERVISING PLUGGING Jerry Holcomb

AFFIDAVIT

STATE OF WEST VIRGINIA,
County of Kanawha

ss:

Carlos Loudin, Jr. and William A. Shreve

being first duly sworn according to law depose and say that they are experienced in the work of plugging and filling oil and gas wells and were employed by Cabot Oil & Gas of WV, well operator, and participated in the work of plugging and filling the above well, that said work was commenced on the 29th day of October, 19 86, and that the well was plugged and filled in the following manner:

Sand or Zone Record Formation	Filling Material	Plugs Used Size & Kind	Casing	
			CSG PULLED	CSG LEFT IN
4549 - 1880	Hole Bridged			
1880 - 1740	6% Gel	13 3/8"	0	47'
1740 - 1340	Class A Cement			
1340 - 700	6% Gel	10 3/4"	303	0
700 - 600	Class A Cement			
600 - 450	6% Gel	8 5/8"	650	834
450 - 350	Class A Cement			
350 - 110	6% Gel			
110 - 0	Class A Cement			
		Bridge Plug @ 1740'		
Coal Seams				
(Name) None		None - To be filled over by		
(Name)		Coal Company.		
(Name)				
(Name)				

and that the work of plugging and filling said well was completed on the 31st day of October, 19 86.

And further deponents saith not.

Carlos Loudin Jr.
William A. Shreve

Sworn to and subscribed before me this 31st day of October, 19 86.

Jorene Miller
Notary Public

My commission expires:
March 5, 1989

DEC 8 1986
Permit No. 005-0868-P