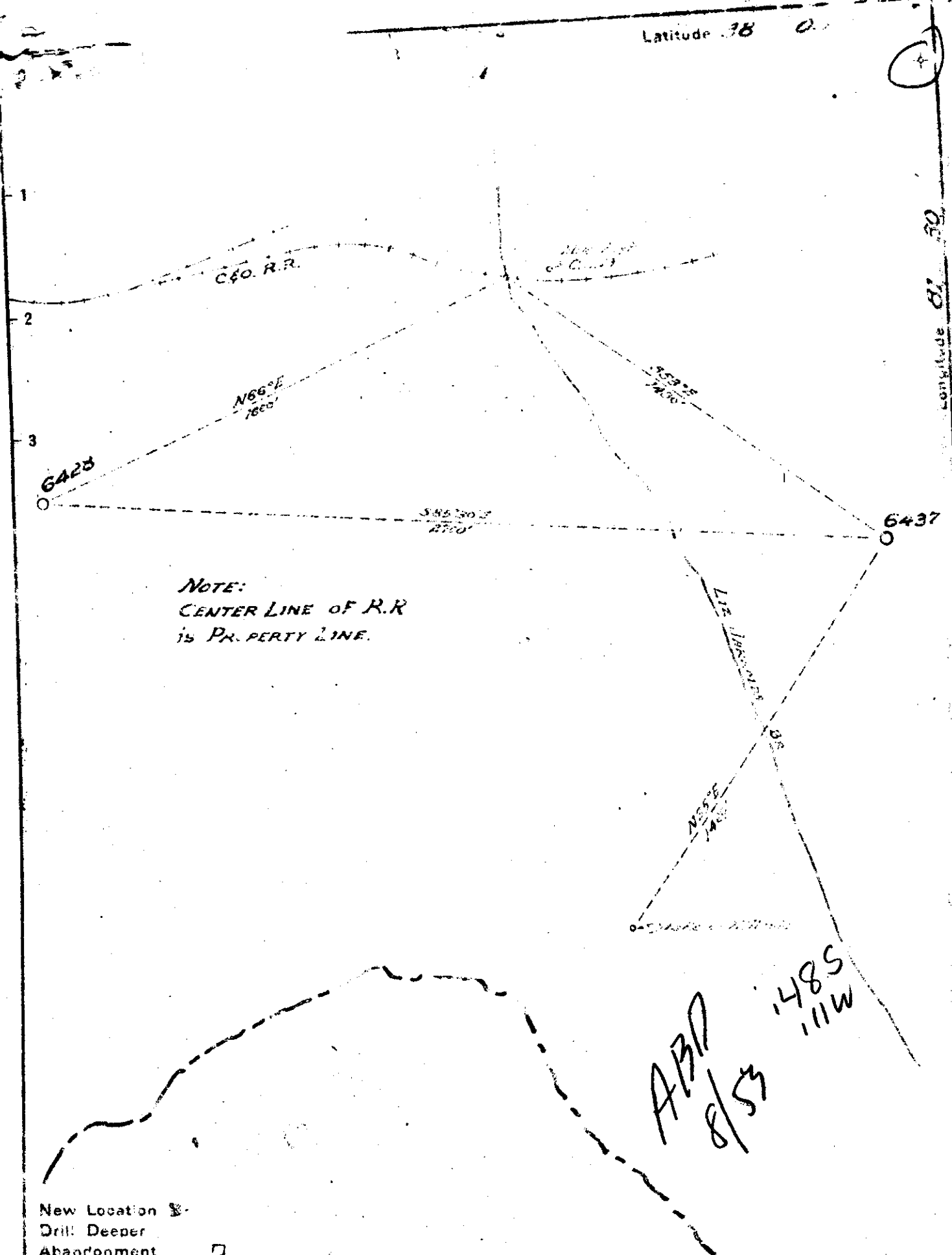


Latitude 38 0

Longitude 81 30



NOTE:  
 CENTER LINE OF R.R.  
 IS PROPERTY LINE.

APP  
 8/53  
 1485  
 111W

New Location   
 Drill Deeper   
 Abandonment

Company	UNITED FUEL GAS CO.	
Address	CHARLESTON, W. VA.	
Farm	COAL RIVER MINING & LUMBER CO.	
Tract	Acres 3,000	Lease No. 171E0
Well (Farm) No.	7	Serial No. 6437
Elevation (Spirit Level)	1756.40	
Quadrangle	BALD KNOB	
County	BOONE	District SHERMAN
Engineer		
Engineer's Registration No.	662	
File No.	68-33	Drawing No.
Date	10-19-48	Scale 1"=400'

STATE OF WEST VIRGINIA  
 DEPARTMENT OF MINES  
 OIL AND GAS DIVISION  
 CHARLESTON

WELL LOCATION MAP  
 FILE NO. B00-820

+ Denotes location of well on United States Topographic Maps, scale 1 to 62,500, latitude and longitude lines being represented by border lines as shown.

--- Denotes one inch spaces on border line of original tracing.

6-6 247

WEST VIRGINIA DEPARTMENT OF MINES  
OIL & GAS DIVISION  
W E L L R E C O R D

Gas Well  
CASING & TUBING

Permit No. Boo 820  
Bald Knob Quad.

Company  
Address  
Farm  
Location  
Well No.  
District  
Surface  
Mineral

United Fuel Gas Co.  
P.O. Box 1273, Charleston 25, W.Va.  
Coal River Mining & Lbr. Co. A 30000  
Seng. Cr. of Coal River  
6437 Elev. 1756.40  
Sherman Boone County

10 $\frac{1}{2}$	1002	1002
8 5/8	2151	Flt.
7	2796	2796

Coal at 71' 60";  
497' 36"; 723' 48"  
933' 36"; 971' 36"

Coal River Mining & Lbr. Co.  
c/o H.G. Kennedy, Charleston, W.Va.  
7-9-49

Commenced  
Completed  
Date shot

11-11-49  
11-18-49 Depth 3097 to 3118  
with 200# gel.

Open flow  
Volume  
Rock Pressure  
Fresh Water  
Salt Water

30/10ths W in 1"  
58 M Weir  
454 lbs. 48 hrs.  
76#  
1800'

Surface	0	14	Lime	2375	2400
Sand	14	71	Red Rock	2400	2428
Coal	71	76	Lime	2428	2450
Slate	76	110	Red Rock	2450	2477
Sand	110	195	Maxon Sand	2477	2526
Slate	195	251	Slate & Shs.	2526	2550
Sand	251	310	Lime	2550	2580
Slate	310	325	Slate	2580	2615
Sand	325	340	Lime	2615	2660
Slate	340	354	Slate	2660	2665
Sand	354	480	Lime	2665	2712
Slate	480	497	Slate	2712	2715
Coal	497	500	Lime	2715	2755
Slate	500	534	Big Lime	2755	2961
Sand	534	685	Injun	2981	3021
Slate	685	723	Slate	3021	3036
Coal	723	727	Broken Sand	3036	3077
Lime	727	755	Weir Sand	3077	3181
Sand	755	805	Broken Sand	3181	3195
Lime	805	890	Slate	3195	3224
Sand	890	933	Total depth		3224
Coal	933	936			
Sand	936	971	Gas 2500' in Maxon		
Coal	971	974	Gas 2810' in Big Lime		
Slate	974	990	B. Lime Gas 2940 2/10 W 1" 15 M blew out		
Lime	990	1030	Weir Gas 3106-3117 8/10 W 2" 119 M		
Slate	1030	1147	Test before shot 16/10 W 1" 42 M		
Sand	1147	1200	Shot 11-18-49 with 200# gel. 2097-3118		
Slate	1200	1212	Test after shot 30/10 W 1" 58 M		
Sand	1212	1305	Open flow 58 M Weir		
Slate	1305	1311	48 hr. R.P. 454#		
Grampus	1311	1418	Shut in 12-1-49 in 7" casing.		
Slate	1418	1430			
Salt Sand	1430	1470			
Broken Sand	1470	1535			
Sand	1535	1675			
Slate	1675	1685			
Sand	1685	2000			
Slate	2000	2040			
Sand	2040	2090			
Slate	2090	2105			
Lime	2105	2115			
Slate	2115	2142			
Lime	2142	2146			
Sand	2146	2184			
Slate	2184	2207			
Red Rock	2207	2214			
Lime	2214	2305			
Slate	2305	2315			
Lime	2315	2365			
Red Rock	2365	2375			