

WW-7  
8-30-06



West Virginia Department of Environmental Protection  
Office of Oil and Gas  
**WELL LOCATION FORM: GPS**

API: 47-005-00552 WELL NO.: 010720 Siler Coal Fee #5  
 FARM NAME: Siler Coal and Land Company  
 RESPONSIBLE PARTY NAME: Alliance Petroleum Company  
 COUNTY: Boone DISTRICT: Peytona  
 QUADRANGLE: Julian 7.5  
 SURFACE OWNER: Penn Virginia Operating Co. LLC  
 ROYALTY OWNER: Penn Virginia Operating Co. LLC  
 UTM GPS NORTHING: 4225333  
 UTM GPS EASTING: 430426 GPS ELEVATION: 259 m (851')

The Responsible Party named above has chosen to submit GPS coordinates in lieu of preparing a new well location plat for a plugging permit or assigned API number on the above well. The Office of Oil and Gas will not accept GPS coordinates that do not meet the following requirements:


1. Datum: NAD 1983, Zone: 17 North, Coordinate Units: meters, Altitude: height above mean sea level (MSL) – meters.
2. Accuracy to Datum – 3.05 meters
3. Data Collection Method:  
Survey grade GPS \_\_\_\_: Post Processed Differential \_\_\_\_

Real-Time Differential \_\_\_\_

Mapping Grade GPS X: Post Processed Differential X  
 Real-Time Differential \_\_\_\_

4. **Letter size copy of the topography map showing the well location.**

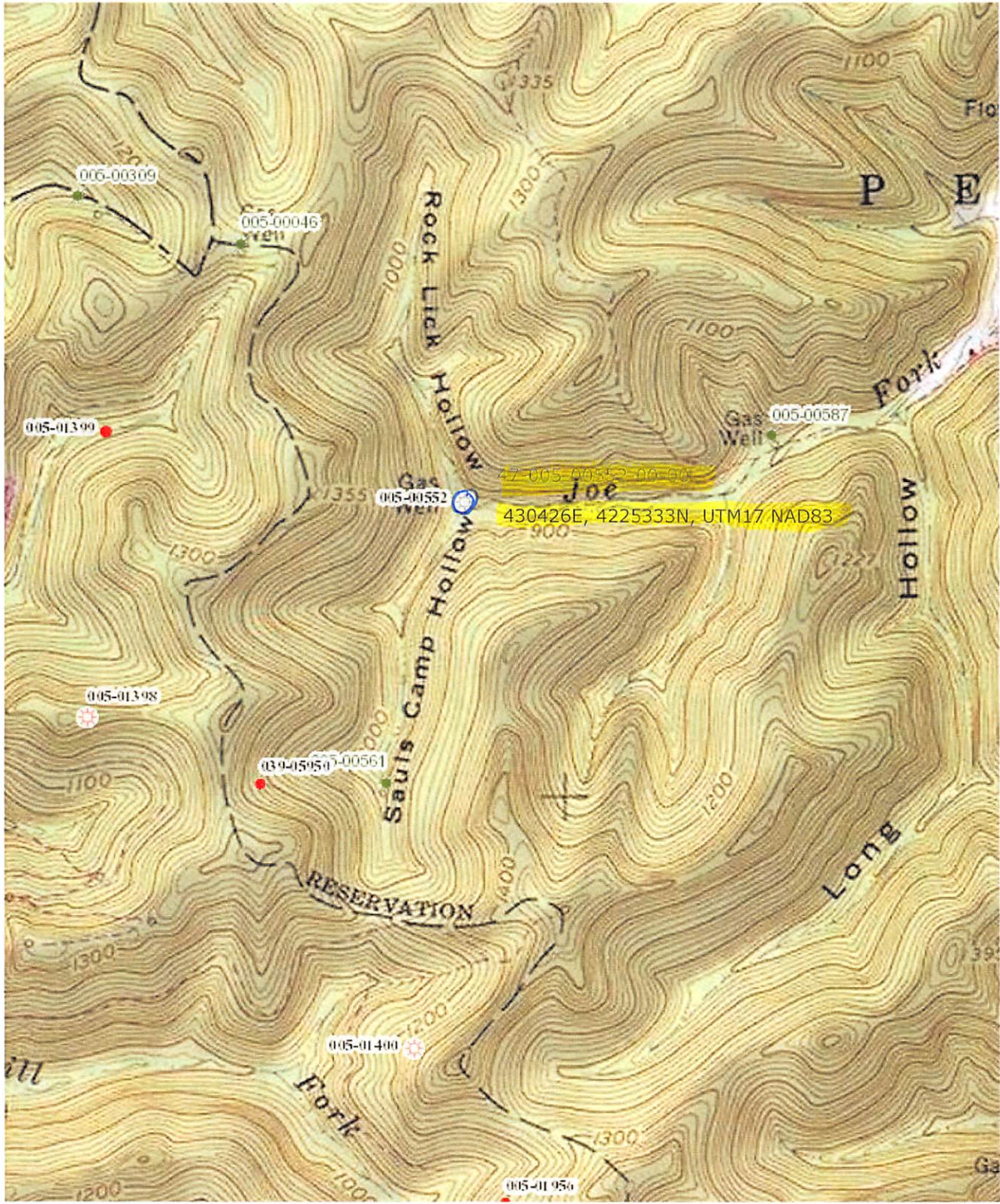
I the undersigned, hereby certify this data is correct to the best of my knowledge and belief and shows all the information required by law and the regulations issued and prescribed by the Office of Oil and Gas.

 Engineer III 8-14-19  
 Signature Title Date

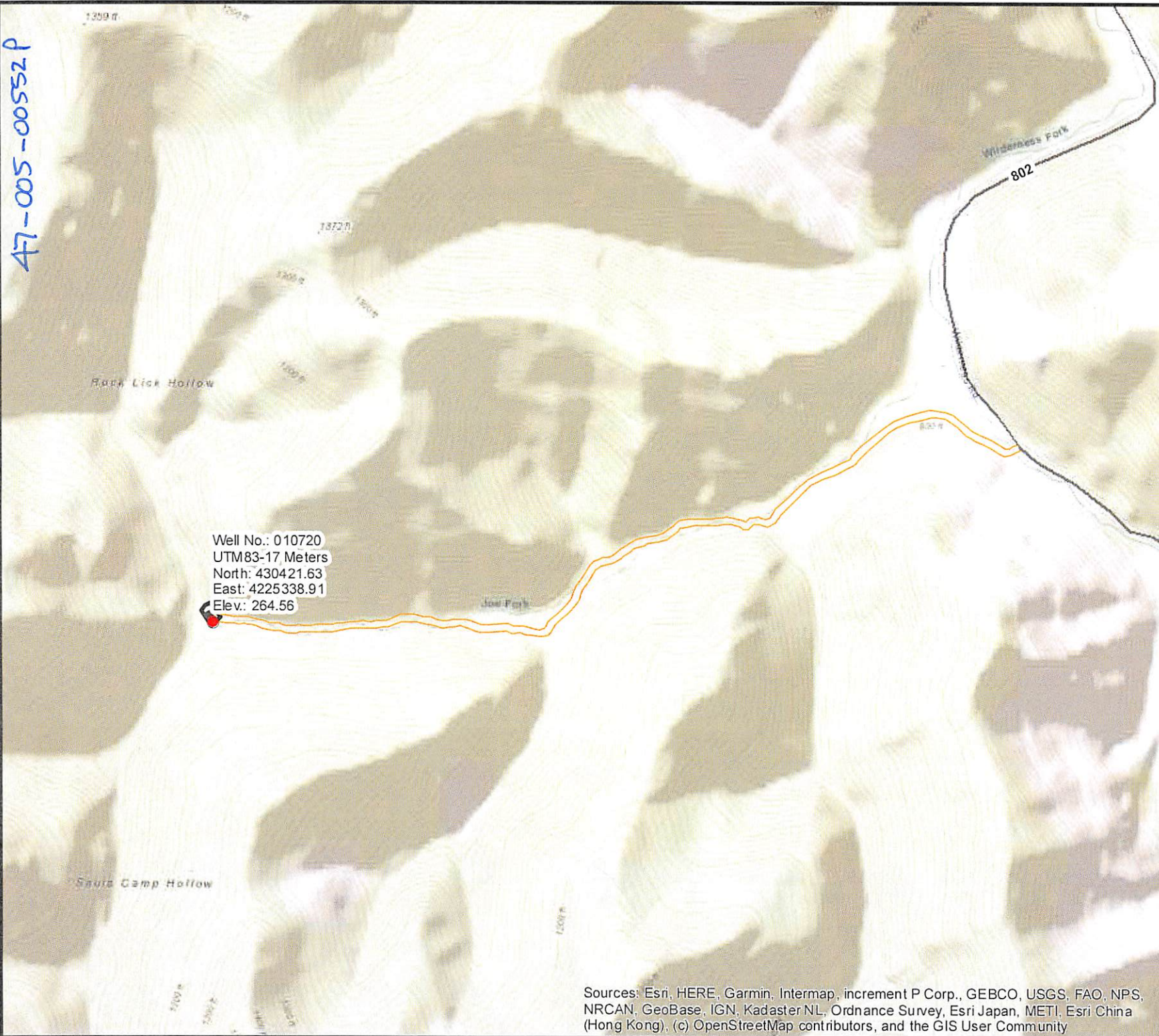
RECEIVED  
Office of Oil and Gas

AUG 16 2019

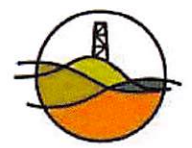
WV Department of  
Environmental Protection



47-005-00552 P



Well No.: 010720  
 UTM83-17 Meters  
 North: 430421.63  
 East: 4225338.91  
 Elev.: 264.56



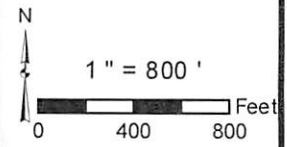
Diversified Gas & Oil Corporation  
 100 Diversified Way  
 Pikeville KY, 41051

010720

Plugging Map

**Legend**

- Well
- ⊗ Sediment Control
- Access Road
- ▨ Pits
- ▭ Pad
- Public Roads



Sources: Esri, HERE, Garmin, Intermap, increment P Corp., GEBCO, USGS, FAO, NPS, NRCAN, GeoBase, IGN, Kadaster NL, Ordnance Survey, Esri Japan, METI, Esri China (Hong Kong), (c) OpenStreetMap contributors, and the GIS User Community



Well No.: 010720  
 UTM83-17 Meters  
 North: 430421.63  
 East: 4225338.91  
 Elev.: 264.56



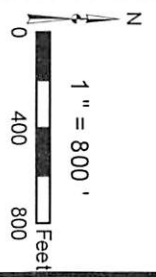
Diversified Gas & Oil  
 Corporation  
 100 Diversified Way  
 Pikeville KY, 41051

010720

Plugging Map

**Legend**

- Well
- Sediment Control
- Access Road
- Pits
- Pad
- Public Roads



Sources: Esri, DigitalGlobe, GeoEye, Earthstar Geographics, CNES/Airbus DS, USDA, USGS, AeroGRID, IGN, and the GIS User Community