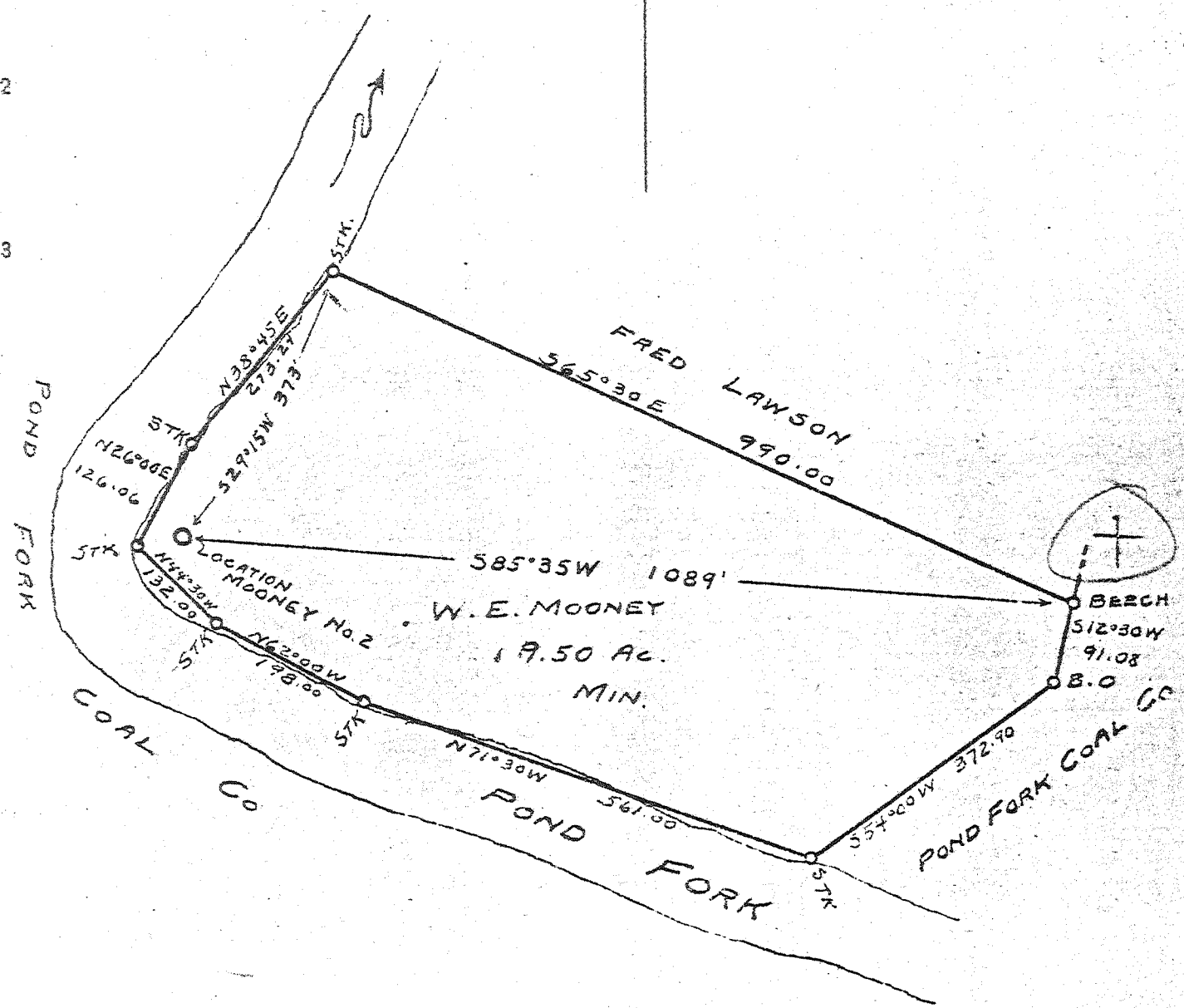


Latitude 38° 05'

Longitude 81° 45'



5.02 - S.  
 0.64 - W.  
 7 SE (K-4)

New Location  
 Drill Deeper  X  
 Abandonment

Company POND FORK OIL & GAS Co.  
 Address MADISON, W. VA.  
 Farm W. E. MOONEY  
 Tract - Acres 9.50 Lease No. -  
 Well (Farm) No. 2 Serial No. -  
 Elevation (Spirit Level) 746.64  
 Quadrangle MADISON - SE  
 County BOONE District CROOK  
 Engineer' SIGFUS OLAFSON  
 Engineer's Registration No. -  
 File No. - Drawing No. -  
 Date OCT. 31, 1940 Scale 1" = 200'

STATE OF WEST VIRGINIA  
 DEPARTMENT OF MINES  
 OIL AND GAS DIVISION  
 CHARLESTON

WELL LOCATION MAP  
 FILE NO. B00-477-D

+ Denotes location of well on United States Topographic Maps, scale 1 to 62,500, latitude and longitude lines being represented by border lines as shown.  
 - Denotes one inch spaces on border line of original tracing.

DEEP

3-0 246 7 11/11

WEST VIRGINIA DEPARTMENT OF MINES  
OIL & GAS DIVISION  
W E L L R E C O R D

Permit No. Bcc-477

Company Pond Fork Oil & Gas Co.  
Address Box 923, Charleston, W.Va.  
Farm W.E. Mooney Acres 104  
Location Pond Fork  
Well No. 2-Sr-36 Elev. 746.64  
District Crook Boone County  
Surface --  
Mineral --  
Commenced 11-8-27  
Completed 12-31-27  
Shot 12-27-27 Depth--  
Flow 17/10ths W in 2" 174 MP  
Salt Water 932', 1033' 1300'

Gas Well  
Casing & Tubing  
10 27 27  
8 1/2 420 --  
6 5/8 1605 1605  
2 2330  
Coal- 90'--60"

Surface & Gravel	0	27	Gas in Berea Sand 8/10 W-1" at
Slate	27	90	3100' increase from 8/10 W 1" to
✓ Coal	90	95	10/10 W 1"
Slate	95	100	
Sand	100	290	
Slate	290	385	
Lime	385	504	
✓ Brampus Sand <i>Brampus</i>	504	655	
Slate	655	667	
Lime	667	685	
Slate	685	738	
Lime	738	780	
Sand	780	885	
Slate	885	890	
Salt Sand <i>1st set</i>	890	1120	1120-Water 932-2 Blrs.
Slate	1120	1123	1123-Water 1033'-2 Blrs.
Sand	1123	1150	
Slate	1150	1170	
Lime	1170	1182	
✓ Maxon Sand <i>2nd set</i>	1182	1347	1347-Hole Full Water 1300'
Lime	1347	1369	
Red Rock	1369	1387	
Slate	1387	1397	
Lime	1397	1425	
Red Rock	1425	1460	
Slate	1460	1513	
Lime <i>LITTLE</i>	1513	1558	
Slate	1558	1581	1581-Gas 1640'
✓ Big Lime	1581	1792	1792-Gas 1752'
✓ Injun Sand	1792	1840	1840 -Gas 1798'
Slate & Shells	1840	2200	
Lime	2200	2268	
✓ Brown Shale	2268	2292	
✓ Berea Sand	2292	2315	2315-Gas 2305
Slate	2315	2330	
			DRILLED DEEPER-11-6-1940
Lime Gr	2330	2372	
Lime H	2372	2392	2392-(Packer)
Lime Gr	2392	2494	
Slate Wh	2404	2450	
Lime H	2450	2470	
Slate & Shells	2470	2750	
Slate Wh	2750	2798	
Slate & Shells	2798	3100	
Shale Br	3100	3145	
Slate & Shells	3145	3400	
Slate Wh	3400	3450	
Lime Dk	3450	3608	
Slate & Shells	3608	3720	
Shale Br	3720	3975	
Slate Wh	3975	4357	
Shale Br	4357	4563	
Shale Bk	4563	4610	
Corniferous Lime	4610	4653	

461

WEST VIRGINIA DEPARTMENT OF MINES  
OIL & GAS DIVISION  
W E L L R E C O R D

Permit No. Boc-477 <sup>40</sup>		Dry Hole
Company	Pond Fork Oil & Gas Co.	Casing & Tubing
Address	Charleston, W.Va.	6 5/8 1605'
Farm	W.E.Mooney Acres 10.50	
Location	Pond Fork of Coal River	
Well No	2-36 Elev. 746.64	
District	<u>Crook</u> <u>Boone County</u>	
Surface	W.E.Mooney	
Mineral	E.E.White & L.F.Echols Est	
Commenced	Nov. 6, 1940	
Completed	Dec. 24, 1940	

DRILLED DEEPER

This well was originally drilled from surface to 2330'  
by Boone Oil & Gas Co., -Drilling commenced November 11, 1927,  
completed December 31, 1927.

Lime	Gr	H	2330	2372
Lime		H	2372	2392
Lime	Gr		2392	2404
Slate	Wh		2404	2450
Lime		H	2450	2470
Slate & Shs.			2470	2750
Slate	Wh		2750	2798
Slate & Shs.			2798	3100
Shale	Br		3100	3145
Slate & Shs.			3145	3400
Slate	Wh		3400	3450
Lime	Dk		3450	3608
Slate & Shs.			3608	3720
Shale	Br		3720	3975
Slate	Wh		3975	4357
Shale	Br		4357	4563
Shale	Bk		4563	4610
Corniferous Lime			4610	4653
TOTAL				4653

4610  
747  
3863

(46)