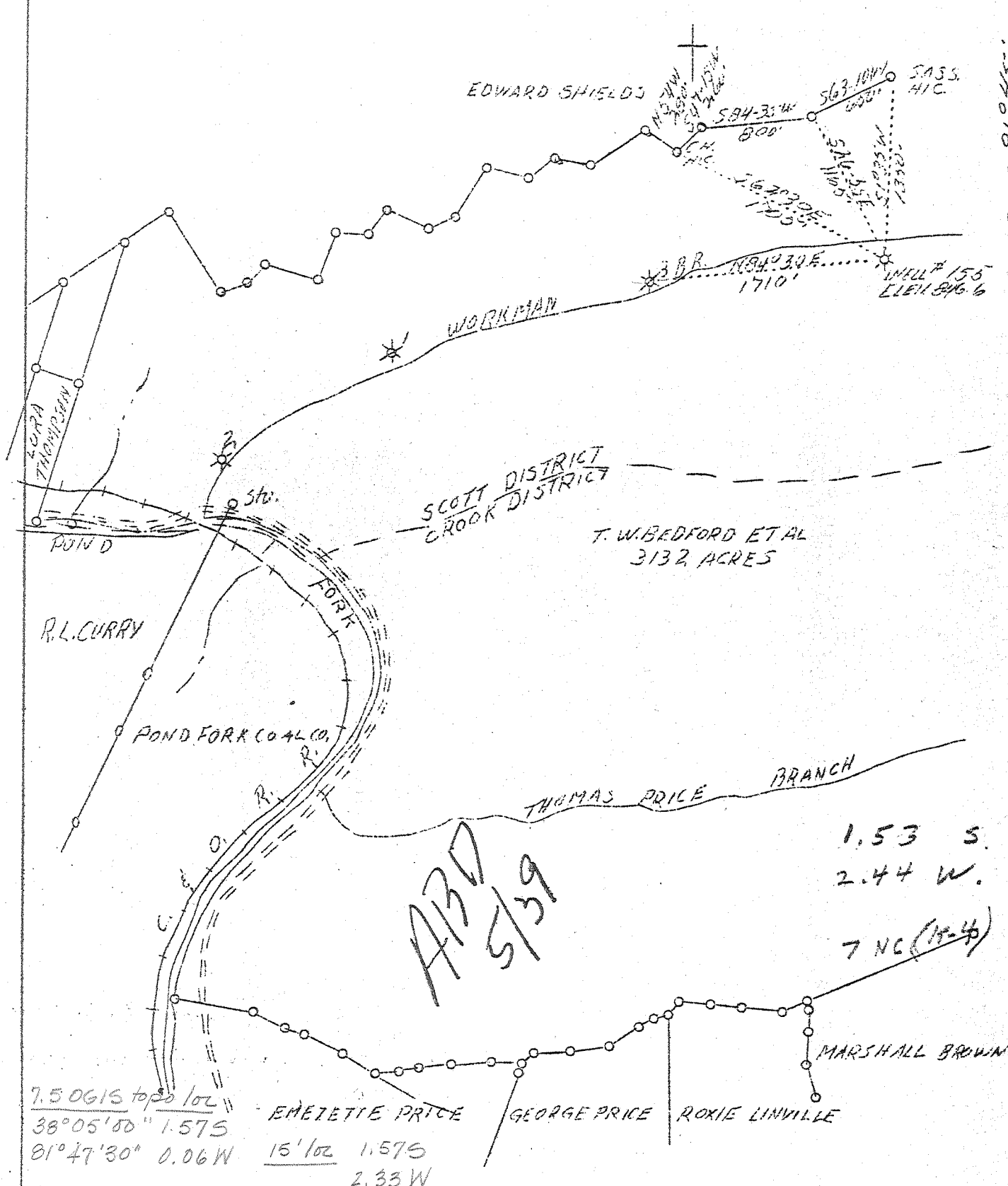


LATITUDE 38°05'

LONGITUDE 81°45'



Company The Owens, Libbey-Owens Gas Dept.
 Address Box 1375 Charleston, W.Va.
 Farm T.W. Bedford ET AL
 Acres 3132
 Lease No. 234
 Serial No. 155
 Well (Farm) No. 4
 El. (S.L.) 846.6
 Quadrangle Madison -SE
 County Boone
 District Scott
 Eng. T.S. Flournoy
 Eng. Reg. No. 269
 Date 5/9/39
 Scale 1" = 1000'

STATE OF WEST VIRGINIA
 Department of Mines
 OIL AND GAS DIVISION
 Charleston

WELL LOCATION MAP

File No. B00-445

x Denoted location of well on U.S. Topographic Maps, scale 1 to 62,500, latitude and longitude lines being represented by border lines as shown.

- Denotes one inch spaces on border line of original tracing.

6-0 236 Deep Well

WEST VIRGINIA DEPARTMENT OF MINES
OIL & GAS DIVISION
WELL RECORD

Permit No. 800-425
Madison Quad.

Dry Hole
CASING & TUBING

Company	The Owens, Libbey-Owens Gas Dept., (no casing record given)
Address	Box 1375, Charleston, W. Va.
Farm	T. W. Bedford, et al ACRS 3131.65
Location	Workman Branch
Well No.	155 ELEV. 846.59
District	Scott - Boone County
Surface & Mineral Address	T. W. Bedford, et al, % A. G. Nesbitt Wilkes-Barre, Pa.
Commenced	April 21, 1939
Completed	May 23, 1939
Open Flow	None

Formation color ^H/_S Top Base Result

Depth before drilling	color	H	S	Top	Base	Result
1834				1834	1851	
Shell	drk	h		1851	1901	
Slate&Shells	drk	h		1901	1912	
Lime	drk	h		1912	1921	
Slate				1921	1969	
Shells	drk	h		1969	2028	
Slate&Shells	drk	s		2028	2070	
Shells	gr	h		2070	2100	
Slate&Shells	drk	s		2100	2109	
Shells	gr	h		2109	2157	
Slate	drk	s		2157	2162	
Shells	gr	h		2162	2256	
Slate	drk	s		2256	2266	
Shells	drk	h		2266	2470	
Slate	drk	s		2470	2479	
Shells	drk	h		2479	2514	
Slate	drk	s		2514	2537	
Slate&Shells	drk	h		2537	2714	
Slate	drk	s		2714	2744	
Shells	drk	h		2744	2890	
Slate	drk	s		2890	3207	
Shells	drk	h		3207	3220	
Slate	drk	s		3220	3258	
Shale	brn	s		3258	3263	
Shell	drk	h		3263	3471	Gas 3355
Shale	brn	s		3471	3730	37,000 c.f. blow out in 2 days
Slate	gr	s		3730	3739	
Shell	drk	h		3739	3877	
Slate	gr	s		3877	4134	
Shale	brn	s		4134	4136	
Corniferous Limestone	wh	h		4136	4136	
Total Depth					4136	

4134
847

-3287

461