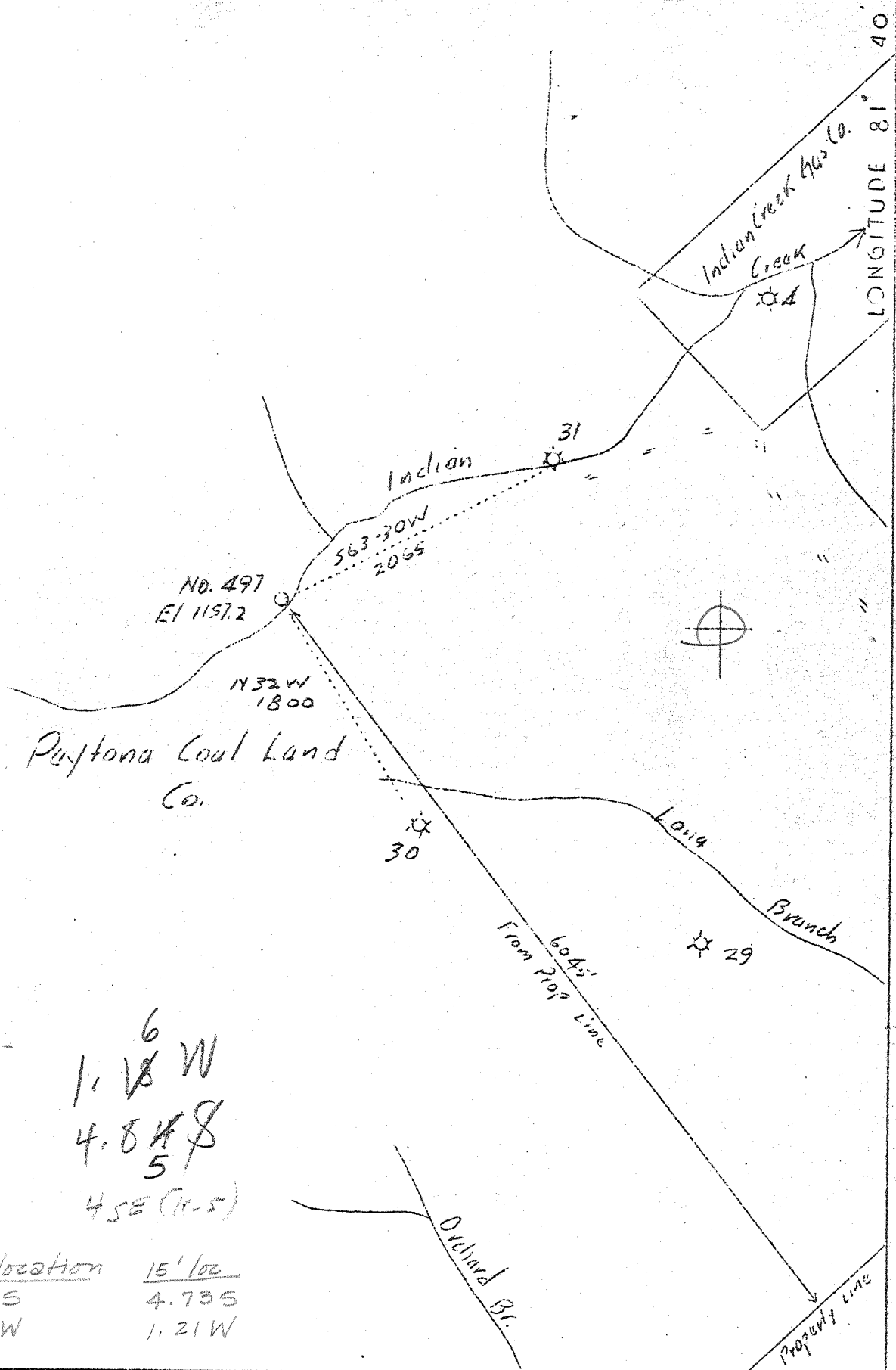


1

2

3

LONGITUDE 81° 40'



Peytona Coal Land Co.

$1 \frac{6}{18} W$   
 $4.848$   
 $5$   
 $45E (K.S)$

7.5 DGIS topo location      15' 102  
 38° 07' 30"      1.85 S      4.73 S  
 81° 40' 00"      1.21 W      1.21 W

Company	The Owens Libbey-Owens Gas Dept.
Address	Box 1375, Charleston, W.Va.
Farm	Peytona Coal Land Co.
Tract	Acres 6760 Lease No. 56
Well (Farm) No.	33      Serial No. 497
Quadrangle	Peytona. - WC
County	Boone
District	Sherman
Engineer	T.S. Flournoy
Engineer's Registration No.	269
File No.	Drawing No.
Date	Oct. 21, 1937      Scale 1"-1000'

STATE OF WEST VIRGINIA  
 Department of Mines  
 OIL AND GAS DIVISION  
 CHARLESTON

WELL LOCATION MAP  
 File No. 1300-397

+ Denotes location of well on United States Topographic Maps, scale 1 to 62,500, latitude and longitude lines being represented by border lines as shown.

— Denotes one inch spaces on border line of original tracing.

Samples 3-K (1627-4272')

6-6 239 Deep Well

WEST VIRGINIA DEPARTMENT OF MINES  
OIL & GAS DIVISION  
WELL RECORD

Permit No. Boo-397  
Peytona Quad.

Gas Well

Company The Owens, Libbey-Owens Gas Dept.,  
Address P. O. Box 1375, Charleston, W. Va.  
Farm Peytona Coal Land Co. ACRES 6760  
Location Indian Creek  
Well No. 497 ELEV. 1157' Gr.  
District Sherman - Boone County  
Surface & Mineral Peytona Coal Ld. Co., Staunton, Va.  
Commenced March 13, 1940  
Completed June 20, 1940  
Shot 6/1/40 - Depth 2824-4218  
Open Flow -  
Volume 77,000 c.f.  
Rock Pressure 348 lbs. 60 hrs.  
Fresh Water 65  
Salt Water 920

CASING & TUBING		
10	35-8	35-8
8-1/4	355	355
6-5/8	1708	1708
3	3474	3474
Packer - Heester Anchor Wall		
Size - 3x6-5/8x16		
Depth set -		
Perf. top - 2075		
" bbt. - 3474		
COAL AT:		
42'	24"	
62	36	
230	36	
287	48	
317	60	

Clay	dk	s	0	35	Big Lime	gr	m	1714	1920		
Sand	lt	s	35	42	Injun Sand	5rd	h	1920	1930	<i>Geolog Depths</i>	
Coal	493	bk	42	44	Injun Sand	3rd	bk	1930	1957	<i>Pocahontas - 1921</i>	
Slate	dk	s	44	62	Slate&Shells	bk	h	1957	1997	<i>Macedonia - 1929</i>	
Coal	495	bk	62	65	FW 65	Slate	bk	s	1997		
Sand	gr	s	65	75	4 blrs.hr.	Shell	gr	h	2036	2051	
Slate	dk	s	75	107		Slate&Shells	gr	h	2051	2079	
Sand	wh	h	107	117		Slate	gr	s	2079	2182	
Slate	dk	s	117	126		Slate	lt	s	2182	2278	
Sand	wh	s	126	192		Shells	lt	h	2278	2313	
Slate	dk	s	192	230		Slate	lt	s	2313	2323	
Coal	498	bk	230	233		Shell	gr	h	2323	2361	
Slate	lt	s	233	258		Slate&Shells	gr	h	2361	2372	
Slate&Shells	dk	s	258	287		Shale - <i>coffee</i>	bk	s	2372	2381	
Coal	497	bk	287	291		Berea Sand	dk	h	2381	2392	<i>2372</i>
Slate	dk	s	291	317							<i>2381</i>
Coal	495	bk	317	322		Shell	bk	h	2392	2398	<i>Gas 2390</i>
Sand	wh	s	322	402		Shale	wh	s	2398	2416	<i>15,000</i>
Slate	dk	s	402	432		Slate&Shells	wh	h	2416	2538	<i>2392 - Beria</i>
Sand	wh	h	432	516		Shells	dk	h	2538	2586	
Slate	bk	s	516	584		Slate	wh	s	2586	2614	
Slate&Shells	gr	s	584	619		Shell	bk	h	2614	2620	
Sand	wh	h	619	694		Slate&Shells	bk	s	2620	2685	
Slate	dk	s	694	701		Slate&Shells	wh	s	2685	2776	
Sand	wh	h	701	760		Shell	bk	h	2776	2791	
Slate	dk	s	760	766		Slate&Shells	bk	h	2791	2891	<i>Gas 2823-</i>
Sand	dk	h	766	831							<i>2827</i>
Slate	dk	s	831	841							<i>103,000</i>
Sand	wh	h	841	926	SW 920	Slate	wh	s	2891	2923	
Slate	dk	s	926	931	2 blr. hr.	Shell	bk	h	2923	2927	
Sand	wh	h	931	1047		Slate	wh	s	2927	2956	
Slate	dk	s	1047	1052		Slate&Shells	bk	m	2956	2979	
Sand	wh	h	1052	1313		Slate	wh	s	2979	3012	<i>Gas 3006-</i>
Sand, bkn.	wh	h	1313	1321							<i>3012</i>
Sand	wh	h	1321	1451							<i>66,000</i>
Sand, bkn.	wh	h	1451	1471		Slate&Shells	wh	m	3012	3079	<i>Gas 3022</i>
Red rock	rd	s	1471	1494							<i>104,000</i>
Slate	gr	s	1494	1509		Slate	wh	s	3079	3191	
Slate&Shells	gr	s	1509	1539		Shells	wh	h	3191	3196	
Lime	wh	h	1549	1617		Slate	bk	s	3196	3231	
Little Lime	bk	m	1617	1671		Slate&Shells	wh	m	3231	3302	
Slate	gr	s	1671	1677		Slate	wh	m	3302	3413	
Big Lime	wh	h	1677	1704	<i>Griff</i>						
Slate	mixed	s	1704	1708	<i>1071</i>						
Lime	bk	h	1708	1714							

CONTINUED TO PAGE TWO

GEOLG

Permit No. B00-397 - Peytona Quad.  
 Company - The Owens, Libbey-Owens Gas Dept.  
 Farm - Peytona Coal Land Co.  
 Acres - 6760  
 Well No. - 497  
 Commenced - 3/13/40 - completed 6/20/40

Slate&Shells	bk	m	3413	3485	Gas 3475	14,000
Slate&Shells	gr	m	3485	3579		
Shale	bn	s	3579	3643		
Slate	wh	m	3643	3651		
Shale	bn	s	3651	3673	Gas 3673	14,000
Slate	wh	m	3673	3690		
Shells	bk	h	3690	3725		
Shale	bn	m	3725	3749		
Shale	gr	s	3749	3754		
Shale	dk	m	3754	3779	Gas 3770	27,000
Shale	bn	m	3779	3796		
Slate	wh	s	3796	3805		
Shell	wh	h	3805	3813		
Slate	bk	s	3813	3823		
Slate	wh	s	3823	3839		
Shale	bn	s	3839	4127	Gas 4119	7,000
Slate	lt	s	4127	4218		
Slate	bk	s	4218	4265		
Slate	gr	s	4265	4354		
Slate	lt	s	4354	4380		
Shell	wh	h	4380	4385		
Slate	wh	s	4385	4533		
Shale	bk	s	4533	4540		
Shale	bn	s	4540	4819		
Shale	bk	s	4819	4861		
Carboniferous Lime			4861	4872		
Total Depth				4872		

461

Geology Dept

SEP 9, 1940