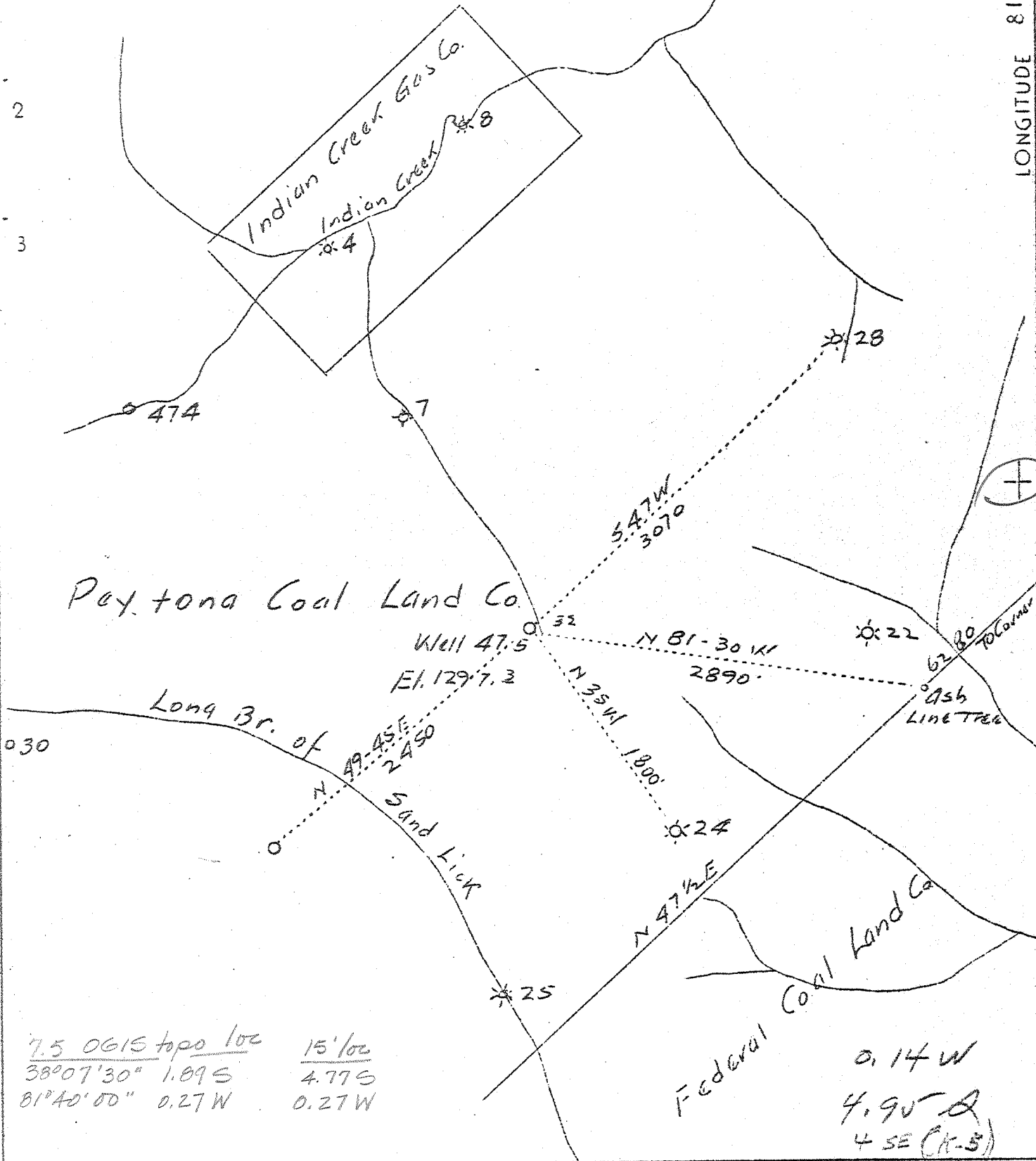


LATITUDE 38° 10'

LONGITUDE 81° 40'



7.5 OGIS topo loc 15' loc  
 38°07'30" 1.89 S 4.77 S  
 81°40'00" 0.27 W 0.27 W

0.14 W  
 4.95 S  
 4 SE (K-5)

Company	The Owens, Libbey-Owens Gas Dept
Address	Box 1375, Charleston, W. Va.
Farm	Peytona Coal Land Co
Tract	Acres 6760 Lease No. 56
Well (Farm) No.	32 Serial No. 475
Quadrangle	Peytona S. W. - <u>WC</u>
County	Boone
District	Sherman
Engineer	T. S. Flournoy
Engineer's Registration No.	269
File No.	Drawing No.
Date	4-8-37 Scale 1" - 1000'

STATE OF WEST VIRGINIA  
 Department of Mines  
 OIL AND GAS DIVISION  
 Charleston

WELL LOCATION MAP  
 File No B00-372

+ Denotes location of well on U. S. Topographic Maps, scale 1 to 62,500 latitude and longitude lines being represented by border lines as shown.

— Denotes one inch spaces on border line of original tracing.

Samples 2-F (1134-4072; 4622-5298) 6-6 239 Deep Well

WEST VIRGINIA DEPARTMENT OF MINES

OIL AND GAS DIVISION

WELL RECORD

Permit No. Boo. 372

Gas Well

Peytona Quad.

CASING & TUBING

Company	The Owens, Libbey-Owens Gas Dept.	10	31	31
Address	P.O. Box 1375, Charleston, W.Va.	2 1/2	766	766
Farm	Peytona Coal Land Co. Acres 6760	6 5/8	1956	1956
Location	Indian Creek	3	2556	2556
Well No.	475			Elev. 1297'
District	Sherman			County Boone
Surface	Peytona Coal Land, Staunton, Wa.			PACKER
Mineral	Same			
Drilling	Commenced July 19, 1937			Kind Disc Wall
	Completed Dec. 3, 1937	3558-3610		Size 3x6 5/8 x 16
Date Shot	10-18- & 20 11-30	Depth 4287-5050		Depth 2555'
Volume	105,000 Cu. Ft.	2610-2633		
Rock Press.	190# 60 hrs.			

Formation	Color	Hgt	Top	Base	Result	Formation	Color	Hgt	Top	Base	Result
Surface	Yellow	S	0	10		Slate	Light	S	2174	2195	
Sand	Gray	S	10	20		Slate&Shells	Black	S	2196	2227	
Gravel	Brown	S	20	30		Slate	Black	S	2227	2233	
Sand	Gray	S	30	35		Shell	Blue	H	2233	2258	
Coal	Black	S	35	37		Slate&Shells	Dark	S	2258	2360	
Sand	Gray	S	37	45		Slate&Shells	Light	S	2360	2408	
Slate	Black	S	45	50		Slate&Shells	Dark	S	2408	2550	
Sand	White	H	50	92		Lime Shell	Gray	H	2550	2562	
Slate	Black	S	92	100		Slate&Shells	Dark	S	2562	2607	
Sand	White	S	100	115		Shale. <i>Coppe</i>	Brown	S	2607	2614	
Slate	Gray	S	115	169	Water	Barca Sand	White	H	2614	2634	Gas
Sand	White	S	169	189	118'	Slate&Shells	Black	S	2634	2638	2634'
Slate	White	S	189	194	10 Bails	Lime Shell	Black	H	2638	2663	83,000
Sand	White	S	194	249	pr. hr.	Slate&Shells	Black	S	2663	2727	
Slate	Dark	S	249	285		Slate & Shells	Gray	S	2727	2796	Gas
Sand	Gray	S	285	290		Lime Shell	Gray	H	2796	2817	2697'
Slate	White	S	290	300		Slate & Shells	Gray	M	2817	3034	5,000
Sand	White	S	300	313		Slate&Shells	Gray	S	3034	3191	
Slate	White	S	313	379		Lime	Light	H	3191	3215	Gas -
Shell	Gray	H	379	399		Slate & Shells	Gray	S	3215	3288	2884'
Slate&Shells	Light	S	399	454		Slate	Light	S	3288	3323	11,000
Coal	Black	S	454	457		Shale	Dark	S	3323	3338	
Slate	Gray	S	457	466		Slate&Shells	Gray	S	3338	3370	
Slate&Shells	White	S	466	584		Crevice			3370	3375	
Sand	Gray	M	584	587		Slate&Shells	Gray	S	3375	3378	
Coal	Black	S	587	589		Shale	Blue	S	3378	3410	
Sand	Gray	M	589	626		Slate	Light	S	3410	3447	
Slate&Shells	White	S	626	657		Slate&Shells	Gray	S	3447	3489	
Sand	White	H	657	742		Shell	Gray	H	3489	3521	
Coal	Black	S	742	744		Slate & Shells	Light	H	3521	3548	
Slate&Shells	Dark	S	744	861		Slate & Shells	Gray	S	3548	3588	Gas -
Sand	White	M	861	921		Slate & Shells	Gray	M	3588	3621	3578'
Slate&Shells	Dark	S	921	936		Slate & Shells	Dark	S	3621	3655	10,000
Sand	White	H	936	1088		Slate&Shells	Gray	M	3655	3720	
Slate&Shells	Dark	S	1088	1094		Slate&Shells	Dark	S	3720	3753	
Slate	Dark	S	1094	1129		Slate&Shells	Gray	S	3753	3786	Gas
Salt Sand	Yellow	H	1129	1208		Shell	Gray	H	3786	3810	5588'
Salt Sand	White	H	1208	1470	Water	Slate&Shells	Dark	S	3810	3838	5,000
Slate&Shells	Gray	M	1470	1476	1316	Slate&Shells	Gray	M	3838	3860	
Sand	Gray	H	1476	1530	H.F.	Shale	Black	S	3860	3884	Gas
Slate&Shells	Gray	M	1530	1537	Water	Slate&Shells	Dark	S	3884	3920	3884'
Sand	White	H	1537	1689	1396'	Lime Shells	Gray	H	3920	3932	5,000
Shale	Red	S	1689	1704	H.F.	Slate&Shells	Gray	H	3932	3945	
Slate	Black	S	1704	1709		Shell	Gray	H	3945	3967	
Slate&Shells	Black	S	1709	1731		Slate&Shells	Gray		3967	4315	Gas -
Lime	Dark	H	1731	1745		Shale	Brown	S	4315	4392	4313'
Sand	White	H	1745	1862	Sample	Slate&Shells	Gray	S	4392	5052	9,000
Little Lime	Black	H	1862	1899	Shale	Slate&Shells	Black	S	5052	5076	
Slate	Dark	S	1899	1904		Slate&Shells	Dark	S	5076	5096	Gas
Lime	Gray	H	1904	1919	666	Shale	Br. & Bl.	S	5096	5121	4677
Lime	Dark	H	1919	1928	1904-	Lime <i>Zonodaga</i>	Black	H	5121	5182	5,000
Slate	Black	S	1928	1931	2129	Corniferous	Lime Wh.	H	5182	5268	518
Lime	Dark	H	1931	1940		Criskany Sand			5268	5278	Gas
Lime	Gray	H	1940	1945		Cherty Lime	Wh.		5278	5299	4812
Lime	Dark	H	1945	1956		TOTAL DEPTH			5299	5299	5,000
Big Lime	White	H	1956	2128					5299	5129'	Gas
Tanger Sand	Red	H	2128	2174		Gas			4,000	---	5029

Gas BE REA

Gas 11,000

Gas 9,000

Gas 5,000

Gas 5,000

485

2188-2193

GEOL