

LATITUDE 38° 15'

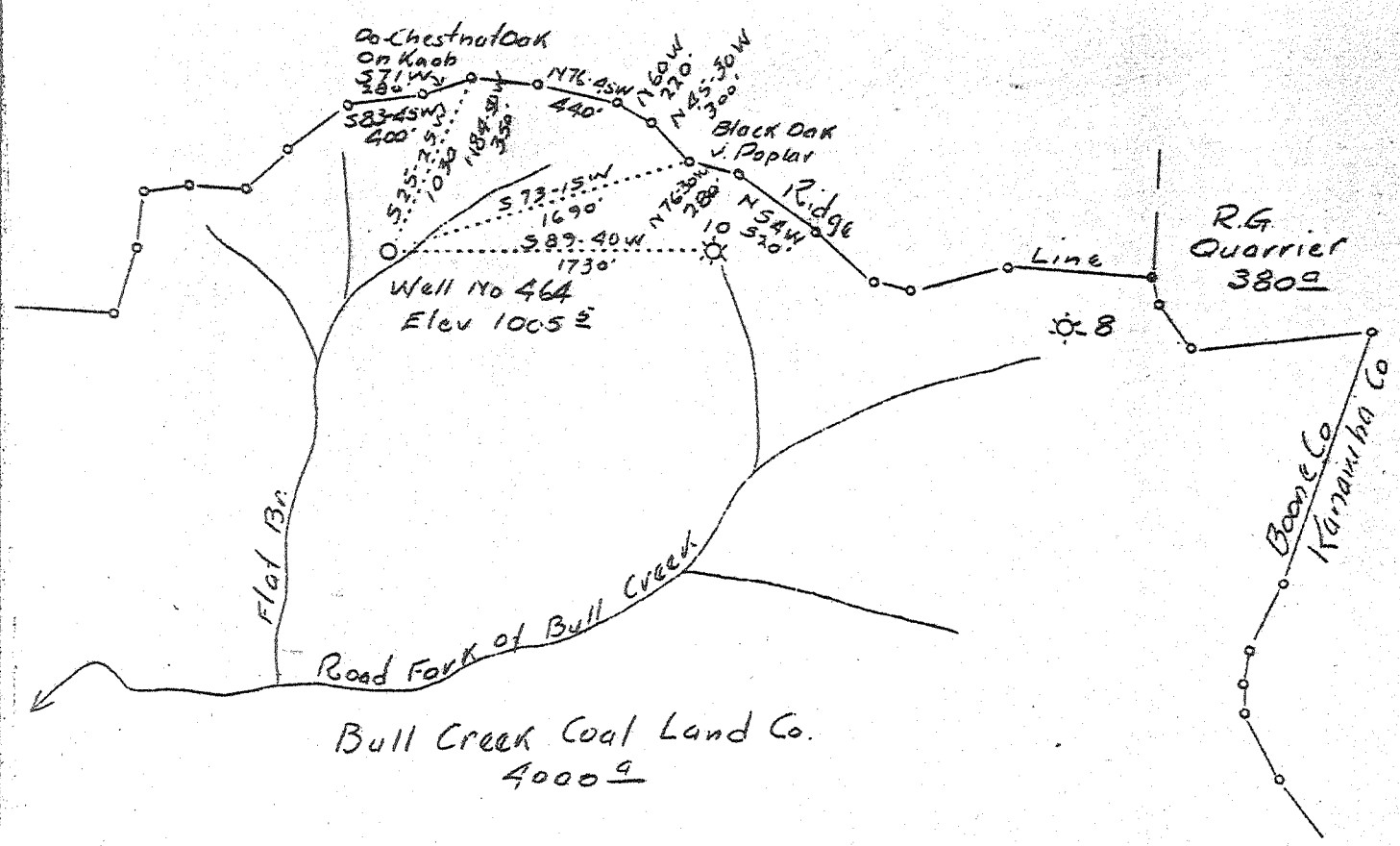
LONGITUDE 81° 35'



2,035
4,31W

2 WC (H-5)

Pennsylvania and Virginia Coal and Coke Corp'n.



Company - The Owens, Libbey-Owens Gas Dept.
 Address Box 1375, Charleston, W. Va.
 Farm Bull Creek Coal Land Co.
 Tract _____ acres 4000 Lease No. 16
 Well (Farm) No. 12 Serial No. 464
 Quadrangle Peytona, N.C.
 County Boone
 District Peytona - NC
 Engineer T. S. Flournoy
 Engineer's Registration No. 269
 File No. _____ Drawing No. _____
 Date 12-18-36 Scale 1" = 1000'

STATE OF WEST VIRGINIA
 Department of Mines
 OIL AND GAS DIVISION
 Charleston

W E L L L O C A T I O N M A P

File No. B00-357

+ Denotes location of well on U. S. Topographic Maps, scale 1 to 62,500 latitude and longitude lines being represented by border lines as shown.

- Denotes one inch spaces on border line of original tracing.

6-6 237 Deep Well

WEST VIRGINIA DEPARTMENT OF MINES
OIL AND GAS DIVISION

W E L L R E C O R D

Permit No. Boo-357

Gas Well

Peytona Quad.

CASING & TUBING

Company	The Owens, Libbey-Owens Gas Dept.	13	287	287
Address	P.O.Box 1375, Charleston, W.Va.	10	1316	1316
Farm	Bull Creek Coal Land Co, Acres 4000	6 5/8	4545	4545
Location	Bull Creek	2	4618	4618
Well No.	464			
	Elev. 1006'			
District	Peytona			
	County Boone			
Surface	Bull Creek Coal Land Co., 886 Ellicott St.			
Address	Buffalo, N.Y.	Kind	Spang Anchor & Hook Wall	
Mineral	Same	Size	2" x 6 5/8 x 16"	
Drilling	Commenced June 25, 1937	Depth	4605	
	Completed Not given			
Date Shot	Sept. 23, 1937	Depth 4608-4618	Perf. top	4609
Volume	300,000 Cu.Ft.	Rock Press. 1230#	Perf. bottom	4618
		48 hrs.		

PACKER

Formation	Color	H ₂ O	TOP	Base	Result	Formation	Color	H ₂ O	TOP	Base	Result
Sand	Dark	S	0	32		Slate&Shells	Light	S	3725	3808	
Slate	Dark	S	32	52		Shells	Gray	H	3808	3817	
Coal	Black	S	52	56		Slate&Shells	Light	S	3817	4025	
Slate	Dark	S	56	63		Shells	Dark	S	4025	4049	
Slate&Shells	Dark	S	63	90	Water	Slate&Shells	Light	S	4049	4077	Gas
Sand	White	S	90	120	115'	Slate	Light	S	4077	4176	4172'
Slate	Dark	S	120	169	2 bails	Slate&Shells	Light	S	4176	4218	43,00
Coal	Black	S	169	172	pr.hr.	Shale	Brown	S	4218	4395	
Slate	Dark	S	172	247		Shells	Dark	H	4395	4410	
Coal	Black	S	247	250	Water	Shale	Brown	S	4410	4445	
Slate	Dark	S	250	270	250'	Slate	Light	S	4445	4451	
Sand	White	S	270	321	5 bails	Slate&Shells	White	S	4451	4471	
Slate	Dark	S	321	351	pr.hr.	Shale	Brown	S	4471	4518	
Sand	White	H	351	467		Shell	Dark	S	4518	4522	
Slate	Dark	S	467	500		Corniferous Lime D.	H	OK 4522	4527		
Shells	Dark	S	500	527		Corniferous Lime G.	H	4527	4545		
Sand	White	S	527	556	Water	Corniferous Lime D.	H	4545	4564		
Sand	White	H	556	694	536'	Corniferous Lime L.	H	4564	4607		
Sand	White	S	694	728	Hole	Oriskany Sand	Light	H	4607	4618	Gas
Slate	Dark	S	728	762	Full	Zime- W	White	H	4618	4629 1/2	4610-
Sand	White	M	762	828		TOTAL DEPTH			4629 1/2	4615	
Slate	Black	S	828	865							300,00
Salt Sand	White	S	865	1014	Water						
Slate&Shells	Dark	S	1014	1034	910'						
Shells	Gray	H	1034	1050							
Sand	White	H	1050	1124							
Slate&Shells	Dark	S	1124	1140							
Shells	Dark	H	1140	1154							
Sand - Mud	White	H	1154	1191							
Slate&Shells	Dark	S	1191	1212							
Shells	Dark	H	1212	1233							
Slate&Shells	Dark	S	1233	1253							
Little Lime	Dark	H	1253	1283							
Slate - Flave	Dark	S	1283	1285							
Lime 300	Dark	H	1285	1294							
Big Lime	White	H	1294	1485							
Injun Sand	Red	H	1485	1524	Gas						
Shell	Dark	H	1524	1630	1495'						
Shell	Gray	H	1630	1692	30,000						
Slate&Shells	Gray	S	1692	1938							
Shale - Co	Brown	S	1938	1948							
Berca Shells	Dark	H	1948	1972							
Shells	Gray	H	1972	2165							
Slate&Shells	Gray	S	2165	2208							
Shells	Gray	H	2208	2234							
Slate&Shells	Gray	S	2234	3155							
Slate&Shells	Dark	S	3155	3332							
Slate&Shells	Gray	S	3332	3371							
Slate&Shells	Dark	S	3371	3496							
Shale - AA	Brown	S	3496	3539							
Slate&Shells	Dark	S	3539	3559							
Shale	Brown	S	3559	3625							
Slate&Shells	Brown	S	3625	3650							
Shale	Brown	S	3650	3702							
Shells	Gray	H	3702	3725							

CASING CEMENTED - 6 5/8", 100'; 9-13-37.

Sample studies - 4522 - 4608
ORISK - 4608 - 4618
HDSG - 4618 -

485

sample studies