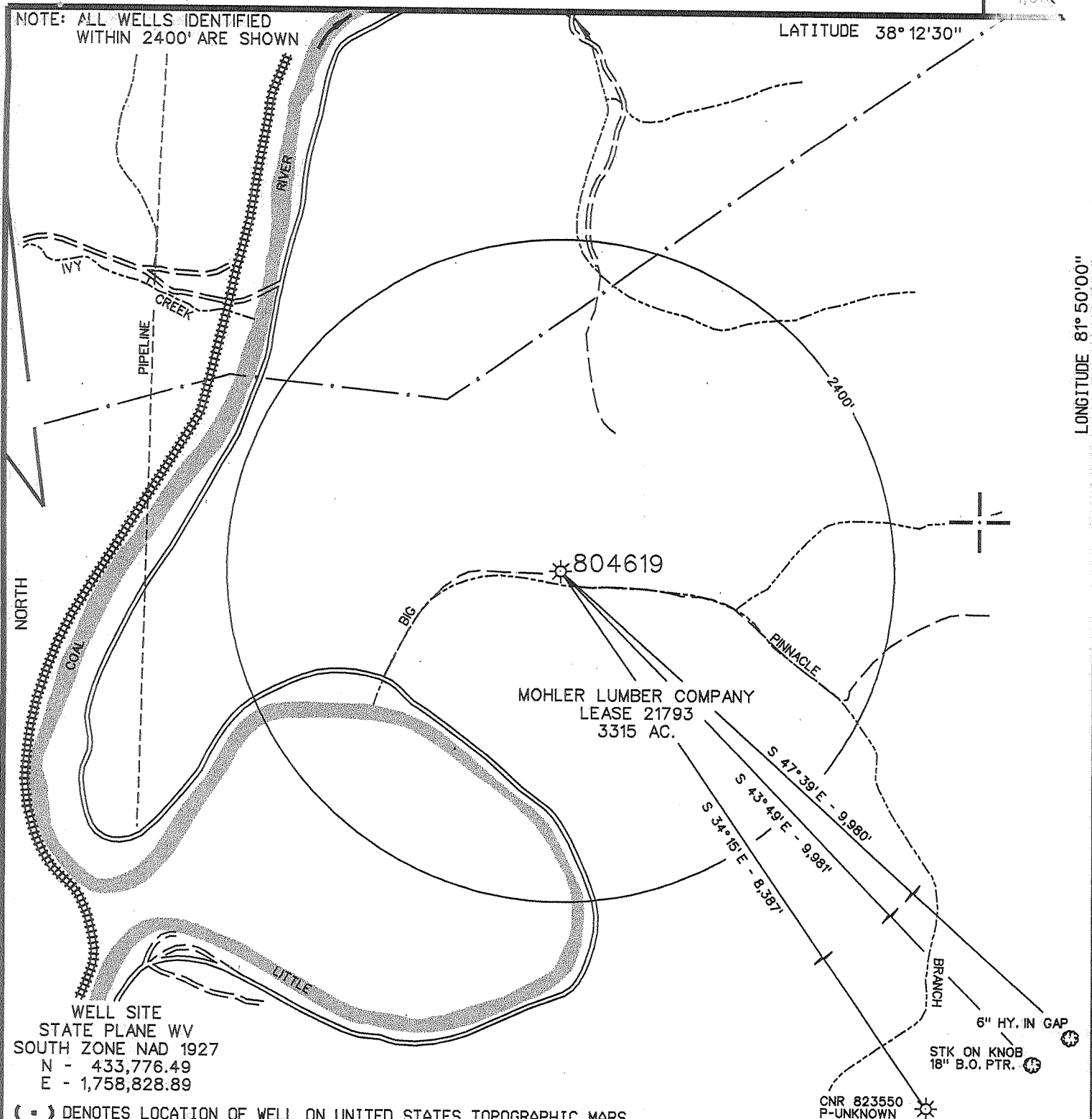


NOTE: ALL WELLS IDENTIFIED WITHIN 2400' ARE SHOWN

LATITUDE 38° 12' 30"

LONGITUDE 81° 50' 00"



WELL SITE
STATE PLANE WV
SOUTH ZONE NAD 1927
N - 433,776.49
E - 1,758,828.89

(*) DENOTES LOCATION OF WELL ON UNITED STATES TOPOGRAPHIC MAPS

FILE NO. CNR_W04619.DGN
DRAWING NO. CNR 804619
SCALE 1" = 1000'
MINIMUM DEGREE OF ACCURACY 1:200
PROVEN SOURCE OF ELEVATION OPERATOR'S WELL RECORD

I THE UNDERSIGNED, HEREBY CERTIFY THAT THIS PLAT IS CORRECT TO THE BEST OF MY KNOWLEDGE AND BELIEF AND SHOWS ALL THE INFORMATION REQUIRED BY LAW AND THE REGULATIONS ISSUED AND PRESCRIBED BY THE DEPARTMENT OF ENVIRONMENTAL PROTECTION.

(SIGNED) [Signature]
R.P.E. _____ L.L.S. 647

PLACE SEAL HERE

STATE OF WEST VIRGINIA
DIVISION OF ENVIRONMENTAL PROTECTION
OIL AND GAS DIVISION



DATE JANUARY 19, 20 05
OPERATOR'S WELL NO. 804619
API WELL NO.

47 005 0311 F
STATE COUNTY PERMIT

WELL TYPE: OIL GAS LIQUID INJECTION WASTE DISPOSAL
(IF "GAS,") PRODUCTION X STORAGE DEEP SHALLOW X
LOCATION: ELEVATION 670' WATER SHED BIG PINNACLE BRANCH OF LITTLE COAL RIVER
DISTRICT SCOTT COUNTY BOONE
QUADRANGLE JULIAN, WV 7.5'

SURFACE OWNER MOHLER LUMBER COMPANY ACREAGE 3,315
OIL & GAS ROYALTY OWNER MOHLER LUMBER COMPANY LEASE ACREAGE 3,315
LEASE NO. 21793

PROPOSED WORK: DRILL CONVERT DRILL DEEPER REDRILL FRACTURE OR STIMULATE X PLUG OFF OLD FORMATION PERFORATE NEW FORMATION OTHER PHYSICAL CHANGE IN WELL (SPECIFY) WORK OVER

PLUG AND ABANDON CLEAN OUT AND REPLUG
TARGET FORMATION _____ ESTIMATED DEPTH _____
WELL OPERATOR COLUMBIA NATURAL RESOURCES, L.L.C. DESIGNATED AGENT MIKE JOHN
ADDRESS P.O. BOX 6070, CHARLESTON, WV 25362 ADDRESS SAME

COUNTY NAME Boone

PERMIT 0311 F

38° 15'

LATITUDE 38° 12' 30"



LONGITUDE 81° 50' 00"

7'5 OGIS topo location

7.5' loc	<u>1.375</u>	15' loc	<u>4.255</u>
	<u>0.31W</u>	(calc.)	<u>0.31</u>

Company _____

Farm _____

Quad Julian 7.5 / Madison 15 NC

County Boone

District Scott

gas well - deep well

WELL LOCATION MAP

File No. 005 - 311
Boone

deep well b-b Julian-Madison(236)

DEC 0 5 2005

API: 47-500311W

State of West Virginia
Division of Environmental Protection
Section of Oil and Gas
WV Department of Environmental Protection
Well Operator's Report of Well Work

Farm name: Mohler Lumber Co.
Location Elevation: 670'
District: Scott

Operator Well No. 804619 - WORKOVER
Quadrangle: Julian
County: Boone

COLUMBIA NATURAL RESOURCES	Casing & Tubing	Used in drilling	Left in Well	Cement fill up Cu.Ft.
Address: P.O. Box 6070	10 ¼		37	Existing
Charleston, WV 25362	8 ¼	335	335	Existing
Agent: Michael A. John	7	1355	1355	Existing
Inspector: Carlos Hively	4 ½		1625	74
Date Permit Issued: 2/22/05	3 ½			Pulled
Date Well work commenced: 2/25/05				
Date Well Work completed: 3/23/05				
Verbal Plugging:				
Date Permission granted on:				
Rotary Cable X Rig				
Total Depth (feet):				
Fresh Water Depth (ft):				
Salt Water Depth (ft.): 1000				
Is coal being mined in area (YES)				
Coal Depths (ft): 15, 70, 550				

OPEN FLOW DATA (SEE ATTACHED)

Producing formation: Pay zone depth (ft) from to

Gas: Initial open flow TSTM MCF/d Oil: Initial open flow Bbl/d

Final open flow MCF/d Final open flow Bbl/d

Time of open flow between initial and final tests Hours

Static rock Pressure psig (surface pressure) after 90 Hours

2nd producing formation: Pay zone depth (ft) from to

Gas: Initial open flow TSTM Oil: Initial open flow Bbl/d

Final open flow MCF/d Final open flow Bbl/d

Time of open flow between initial and final tests Hours

Static rock Pressure psig (surface pressure) after Hours

3rd producing formation: Pay zone depth (ft) from to; from to

Gas: Initial open flow MCF/d Oil: Initial open flow Bbl/d

Final open flow MCF/d Final open flow Bbl/d

Time of open flow between initial and final tests Hours

Static rock Pressure psig (surface pressure) after Hours

NOTE: ON BACK OF THIS FORM PUT THE FOLLOWING: 1). DETAILS OF PERFORATED INTERVALS, FRACTURING OR STIMULATING, PHYSICAL CHANGE, ETC. 2). THE WELL LOG WHICH IS A SYSTEMATIC DETAILED GEOLOGICAL RECORD OF ALL FORMATIONS, INCLUDING COAL ENCOUNTERED BY THE WELLBORE.

WELL OPERATOR: COLUMBIA NATURAL RESOURCES, INC.

Prepared by: James Russell, Workover Specialist

Date: 8/3/05

Reviewed by: Robert E. Schindler

Date: 11/15/05

Robert E. Schindler, Technical Administrator

DEC 0 9 2005

Boo 031W

Operator Well No: 804619 - Workover

1ST STAGE: Foam Frac of Injun

Date Stimulated: 3/07/05

40 Perforations from 1525' to 1535'
Breakdown @ 1475 PSI,
ATP 1223 PSI,
Total N2 111,000 Scf.

Acid 250 gal. 15% HCL
Avg Rate 20 BPM
Total H2O 178 Bbl., Total Sand 50,000#
Post ISIP ____ PSI, 5 min ____ PSI
Well screened out

FOF on Injun: 398 Mcf/d 6 Hours

FRP on Injun: 340 PSI 336 Hours

DEC 09 2005

Columbia Natural Resources LLC
Mohler Lumber 804619
Scott District, Boone County, WV
47-005-00311-F
Ground elevation: 670 Feet

Formation	Top	Bottom
Siltstone, sand & shale	0	513
Salt Sand	513	580
Siltstone & shale	580	760
Salt Sand	760	858
Siltstone & shale	858	1030
Salt Sand	1030	1136
Shale	1136	1254
Little Lime	1254	1360
Big Lime	1360	1500
Shale	1500	1520
Injun sand	1520	1555
Pocono shale	1555	1665
LTD	1665	

Depths are electric log data.

DEC 09 2005

Boo 03/11/11

WEST VIRGINIA DEPARTMENT OF MINES
OIL AND GAS DIVISION

MADISON QUAD.
Permit No. Bcc-311

WELL RECORD

Gas Well

Company	-	United Fuel Gas Co.		<u>CASING & TUBING</u>	
Address	-	Box 1256, Charleston, W. Va.			
Farm	-	Mohler Lumber Co. Acres 3000		10	32
Location	-	Pinnacle Branch		8 1/2	335' 2"
Well No.	-	4619. Elev. 670		6-5/8	1354' 10"
District	-	Scott. County- Boone		3	1488'
Surface & Mineral	-	Mohler Lumber Co. Charleston, W. Va.			
Drilling	-	Commenced- 4/30/36			<u>PACKER</u>
		Completed- 7/13/36			Kind- Hook Wall
Date Shot	-	7/15, 22, 23, 30. Depth- 3963			Size- 3 x 6-5/8
Open Flow	-	12/10ths water in 3" ^{3/4}			Depth- 1475
		After shot- 372 M.C.F.			
Rock Press.-	-	445 lbs. 48 hrs.			
Oil	-				
Fresh Water-	-	15' 70'			Coal was encountered at 75' 36"
Salt Water -	-	550'			

Formation	Color	Hor	Top	Bottom	Results	Formation	Color	Hor	Top	Bottom	Results
Surface			0	15		Brown Shale			3420	3550	
Gravell			15	30	W. 15' hole	(Gas 3506' - 3515')					
Slate			30	60	full	White Slate (Gas 3770' - 3775')			3550	3963	
Sand			60	75	W. 70' hole	Brown Shale (Gas 3970' - 3980')			3963	4188	
Coal			75	78	full	Lime Shell			4188	4200	
Slate			78	96		Black Lime			4200	4250	
Sand			96	130		G. Lime			4250		
Lime			130	180		Total Depth				4266	(461)
Slate			180	200							
Sand			200	305							
Slate			305	395							
Sand			395	550	W. 550' hole						
Black Lime			550	600	full						
Salt Sand			600	845							
Black Slate			845	855							
Salt Sand			855	960					4250		
Black Slate			960	1000					670		
Salt Sand			1000	1110					- 3580		
Salte			1110	1115							
Red Rock			1115	1118							
Slate & Shells			1118	1165							
Red Rock			1165	1175							
Lime Shell			1175	1257							
Little Lime			1257	1287							
Pencil Cave			1287	1292							
Big Lime			1292	1500	Gas 1441-1445'						
Injun Sand			1500	1535							
W. Shells			1535	1730							
Slate & Shells			1730	1775							
Lime Shell			1775	1900							
Stray Sand			1900	1926							
Lime			1926	1956							
Brown Shale			1956	1976							
Serea Sand			1976	1994	Gas 1979-1982'						
Slate			1994	2010	Gas 1982-1987'						
Lime Shell			2010	2018	Gas 1987-1999'						
Slate & Shells			2018	2065	Gas 2010'						
Lime Shells			2065	2090							
Slate & Shells			2090	2665							
Hard Lime Shell			2665	2700							
Slate & Shells			2700	3153							
Brown Shale - 44			3153	3220	Gas 3215'						
Slate & Shells			3220	3365	Gas 3215-3218'						
Brown Shale			3365	3390	Gas 3275-3278'						
Lime Shell			3390	3410							
White Slate			3410	3420	Gas 3440-3445'						

Deep well