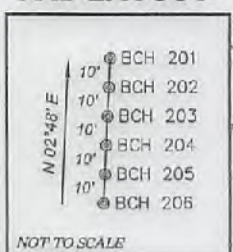


HOWERSHETT PAD LAYOUT



NOTES ON SURVEY

1. NO WATER WELLS OR DEVELOPED SPRINGS WERE FOUND WITHIN 250' OF PROPOSED WELL PAD. NO AGRICULTURAL BUILDINGS > 2500 SQ. FT. OR DWELLINGS WERE FOUND WITHIN 625' OF THE CENTER OF PROPOSED WELL PAD. NO RAILROADS WERE FOUND WITHIN THE SCOPE OF THIS PLAT.
2. TAX MAPS IN THIS AREA WERE FOUND TO CONTAIN SIGNIFICANT ERROR. PROPERTY LINES SHOWN HEREON WERE TAKEN FROM DEEDS AND FIELD EVIDENCE.
3. TIES TO WELLS, CORNERS AND REFERENCES ARE BASED ON GRID NORTH FOR THE WV STATE PLANE COORDINATE SYSTEM NORTH ZONE NAD' 27.

TAG	SURFACE OWNER	TAX MAP / PCL	ACREAGE
A	HOWERSHETT LIVING TRUST, MELVIN & RENEE HOWERSHETT TRUSTEES	19-41	158.94±
B	HOWERSHETT LIVING TRUST, MELVIN & GRACE HOWERSHETT TRUSTEES	19-40	71.78±
C	PAUL D. & JOHN R. ADAMS	18-31	109.00±
D	THOMAS G. & RAMILE HWS POLING	18-32	174.00±
E	ROMMEL FAMILY TRUST	26-5	179.02±

ARSENAL RESOURCES HOWERSHETT BCH 205

(S.P.C. NORTH ZONE) (UTM(M) ZONE 17 NORTH)

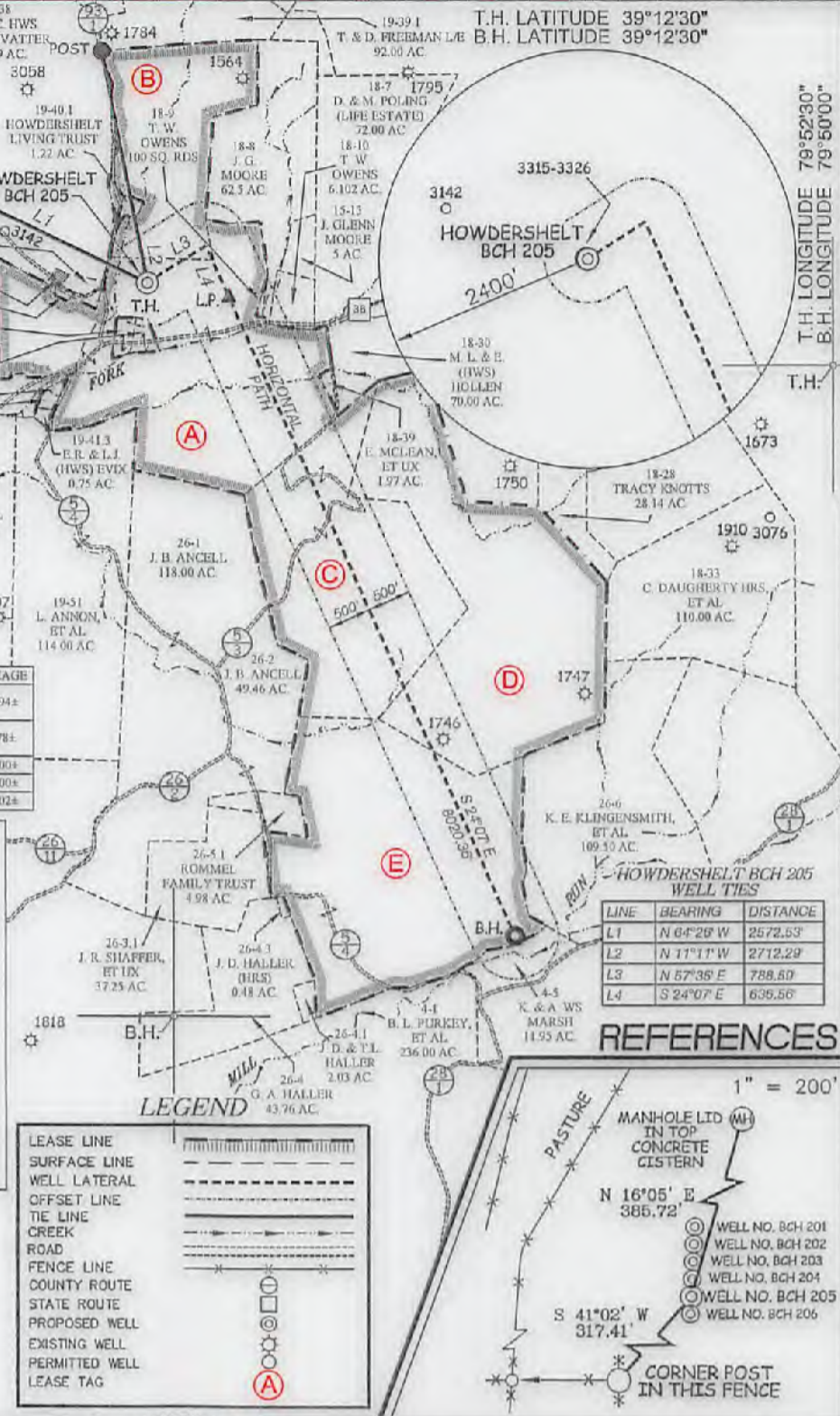
NAD'83 S.P.C.(FT) N. 254,068.4 E. 1,862,148.8
 NAD'83 GEO. LAT-(N) 39.196944 LONG-(W) 79.875259
 NAD'83 UTM (M) N. 4,389,234.5 E. 597,124.0

LANDING POINT

NAD'83 S.P.C.(FT) N. 253,910.2 E. 1,863,074.6
 NAD'83 GEO. LAT-(N) 39.196520 LONG-(W) 79.871990
 NAD'83 UTM (M) N. 4,389,191.0 E. 597,406.9

BOTTOM HOLE

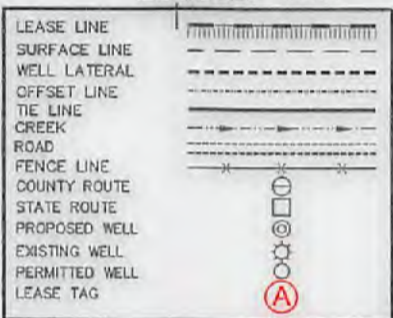
NAD'83 S.P.C.(FT) N. 246,590.4 E. 1,866,352.7
 NAD'83 GEO. LAT-(N) 39.176460 LONG-(W) 79.860320
 NAD'83 UTM (M) N. 4,336,977.4 E. 598,442.6



HOWERSHETT BCH 205 WELL TIES

LINE	BEARING	DISTANCE
L1	N 64°20' W	2572.53'
L2	N 11°11' W	2712.29'
L3	N 57°36' E	788.60'
L4	S 24°07' E	636.56'

LEGEND



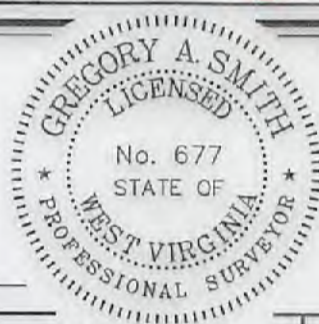
REFERENCES



SLS
 Land & Energy Development
 Solutions from the ground up.
 P.O. Box 100 • 12 Vanhorn Drive • Glenville, WV 26031 • (304) 462-5654
 www.slsurveys.com

I THE UNDERSIGNED, HEREBY CERTIFY THAT THIS PLAT IS CORRECT TO THE BEST OF MY KNOWLEDGE AND BELIEF AND SHOWS ALL THE INFORMATION REQUIRED BY LAW AND THE REGULATIONS ISSUED AND PRESCRIBED BY THE DIVISION OF ENVIRONMENTAL PROTECTION.

P.S. 677 Gregory A. Smith



(+) DENOTES LOCATION OF WELL ON UNITED STATES TOPOGRAPHIC MAPS.
 DATE DECEMBER 7, 20 17
 REVISED _____
 OPERATORS WELL NO. HOWERSHETT BCH 205
 API WELL NO. 47-001-03359
 STATE COUNTY PERMIT

MINIMUM DEGREE OF ACCURACY 1 / 2500 FILE NO. 7962NP205.dwg
 HORIZONTAL & VERTICAL CONTROL DETERMINED BY DGPS (SURVEY GRADE TIE TO CORS NETWORK) SCALE 1" = 2000'

STATE OF WEST VIRGINIA
 DIVISION OF ENVIRONMENTAL PROTECTION
 OFFICE OF OIL AND GAS

WELL TYPE: OIL GAS LIQUID INJECTION WASTE DISPOSAL IF "GAS" PRODUCTION STORAGE DEEP SHALLOW

LOCATION: ELEVATION EXISTING: 1,552.40' / PROPOSED: 1,555' WATERSHED BRUSHY FORK
 DISTRICT COVE COUNTY BARBOUR QUADRANGLE NESTORVILLE 7.5'

SURFACE OWNER HOWERSHETT LIVING TRUST, MELVIN & RENEE HOWERSHETT TRUSTEES ACREAGE 158.94±
 ROYALTY OWNER HOWERSHETT LIVING TRUST, MELVIN & RENEE HOWERSHETT TRUSTEES, ET AL ACREAGE 158.94±

PROPOSED WORK: DRILL CONVERT DRILL DEEPER REDRILL FRACTURE OR STIMULATE PLUG OFF OLD FORMATION PERFORATE NEW FORMATION PLUG AND ABANDON CLEAN OUT AND REPLUG OTHER

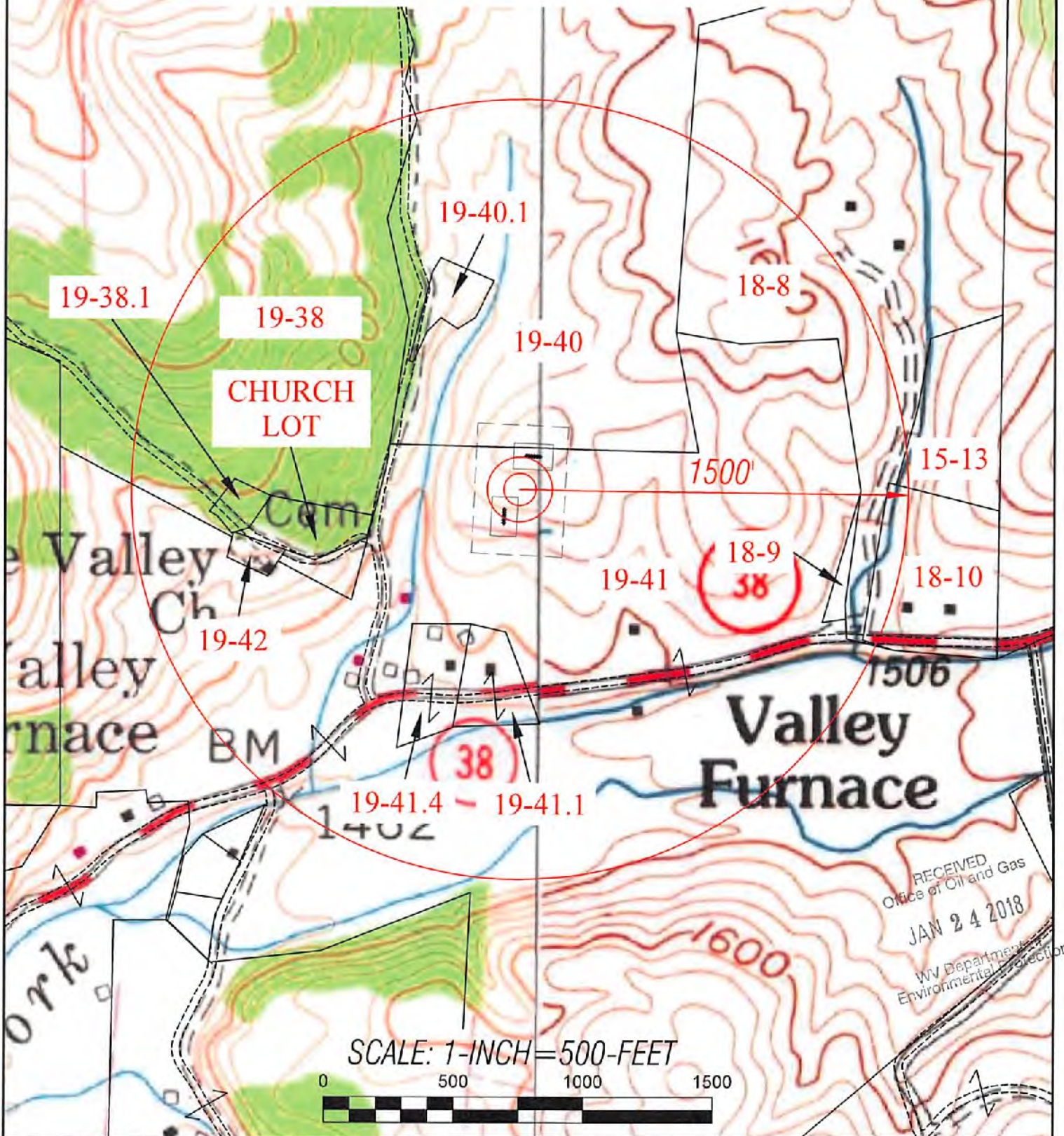
PHYSICAL CHANGE IN WELL (SPECIFY) _____ TARGET FORMATION MARCELLUS
 ESTIMATED DEPTH 15,112' TMD / 7,594' TVD

WELL OPERATOR ARSENAL RESOURCES DESIGNATED AGENT WILLIAM VEIGEL
 ADDRESS 6031 WALLACE RD. EXT. SUITE 300 ADDRESS 65 PROFESSIONAL PLACE
WEXFORD, PA 15090 BRIDGEPORT, WV 26330


05/25/2018

COUNTY NAME PERMIT

HOWDERSHELT PAD POSSIBLE WATER PURVEYORS



RECEIVED
Office of Oil and Gas
JAN 24 2018
WV Department of Environmental Protection

				TOPO SECTIONS OF: COLEBANK & NESTORVILLE WV 7.5' QUADRANGLE		OPERATOR: ARSENAL RESOURCES 65 Professional Place, Suite 200 Bridgeport, WV 26330	
DRAWN BY	FILE NO.	DATE	CADD FILE:	COUNTY	DISTRICT	05/25/2018	
K.G.M.	8506	12-11-17	POSSIBLEWATERPURVEYORS.DWG	BARBOUR	COVE		